

Hope Medical Arts Plaza

29798 Haun Road, Suite 201, Menifee, CA 92586

FOR LEASE



1,650± RSF Available



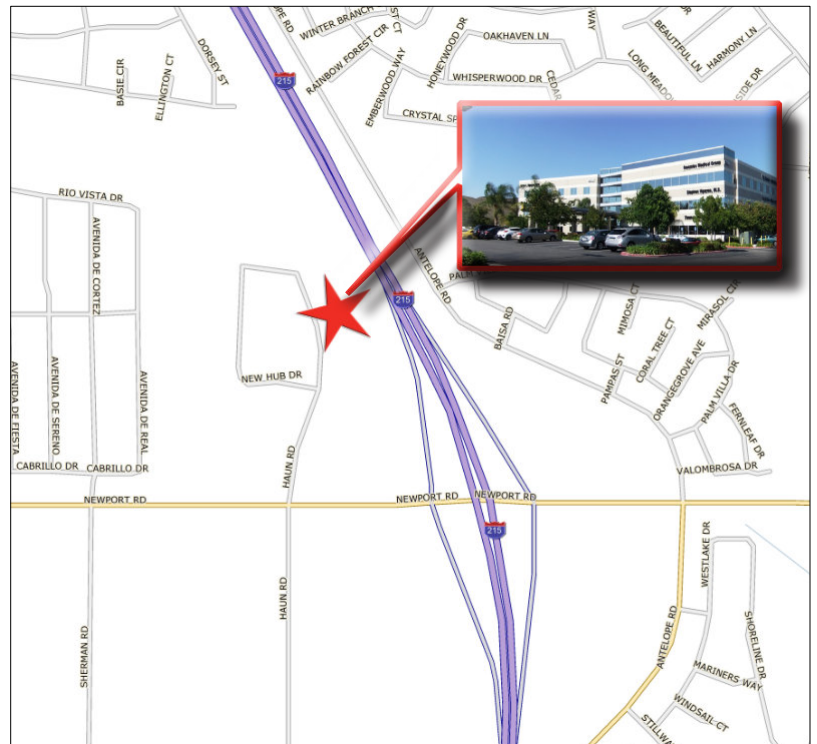
\$3.75 mg PSF Per Month



- 1,650± Rentable Square Feet
- Call Agent to tour. Do not disturb current Tenant
- Lease Rate: \$3.75 MG

Features:

- 1,650± rentable square foot fully built-out medical office suite for lease
- Close to restaurants and banks
- FIOS high speed internet available
- 6± miles from Loma Linda Hospital
- Easy access to Interstate 215
- On-site pharmacy located within the 61,000± SF Hope Medical Arts Plaza
- Protective CC&Rs to ensure continued medical oriented uses within the building
- Currently configured for Physical Therapy use



Mark Esbensen
President | CEO
CA License # 00713990
(951) 491-6300
mesbensen@westmarcre.com

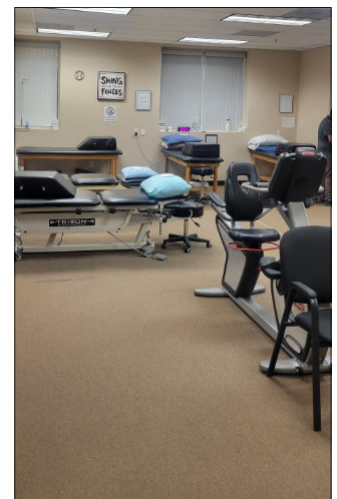
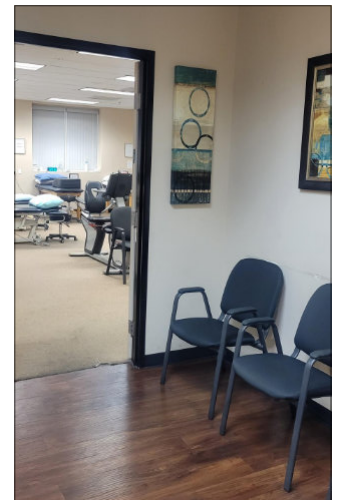
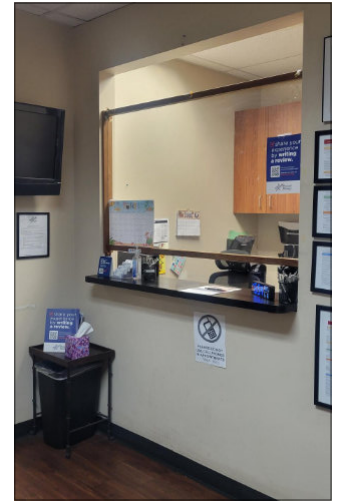
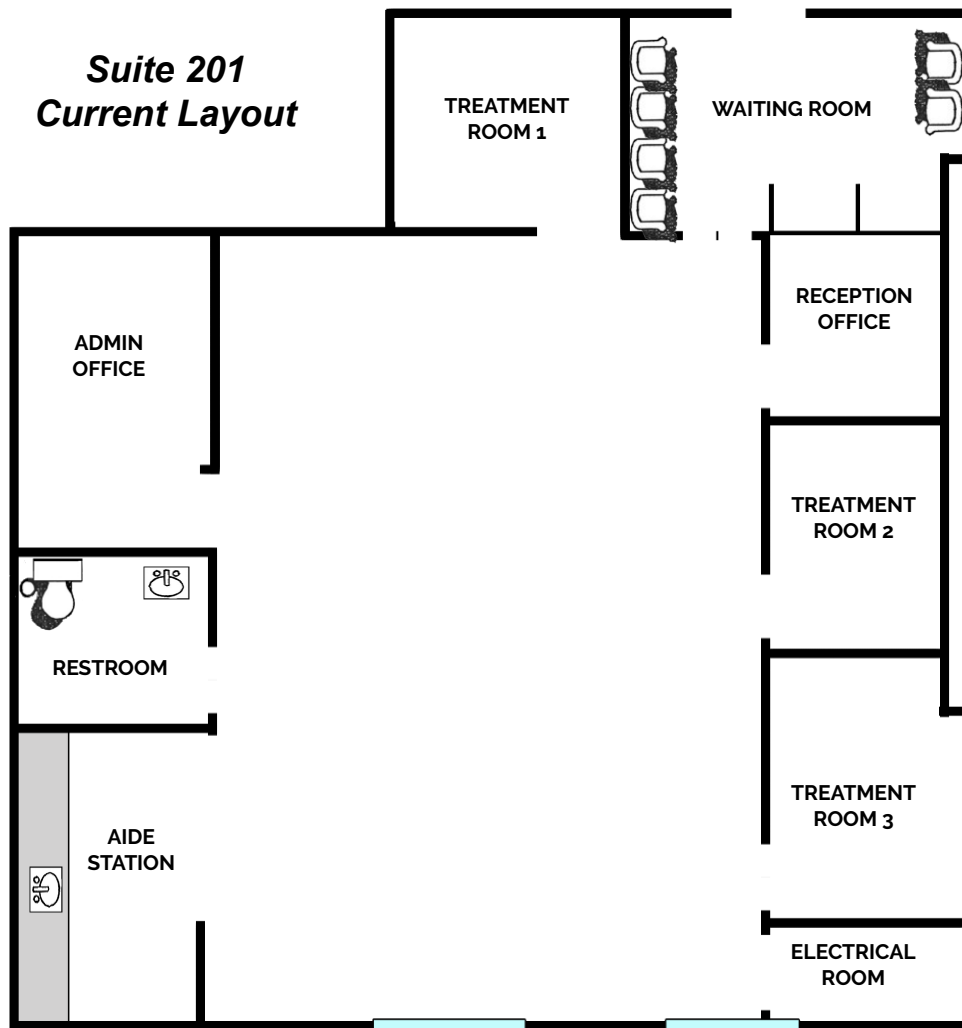
Luanne Palmer
Vice President
CA License # 01444893
(951) 491-6321
lpalmer@westmarcre.com

Mark Esbensen (DRE #00713990) and Luanne Palmer (DRE #01444893) | (951) 491-6300 | www.westmarcre.com

The above information, while not guaranteed, has been secured from sources we believe to be reliable.

Floor plan, site plan, price, tenant mix, and availability subject to change without notice.

SUITE	TENANT	SF	LEASE RATE	DETAILS
201	AVAILABLE	1,650±	\$3.75 PSF/Month MG	Call Agent to Tour



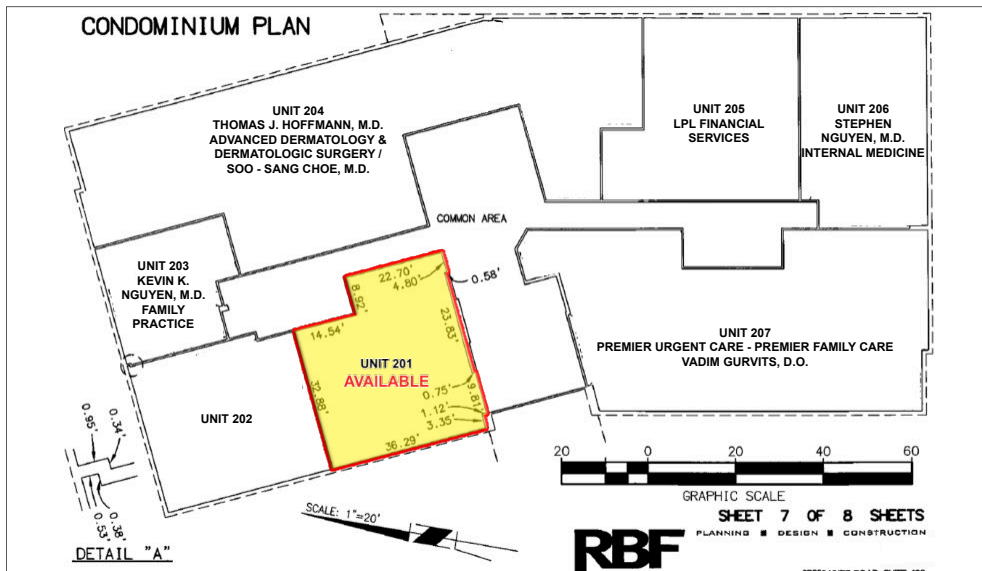
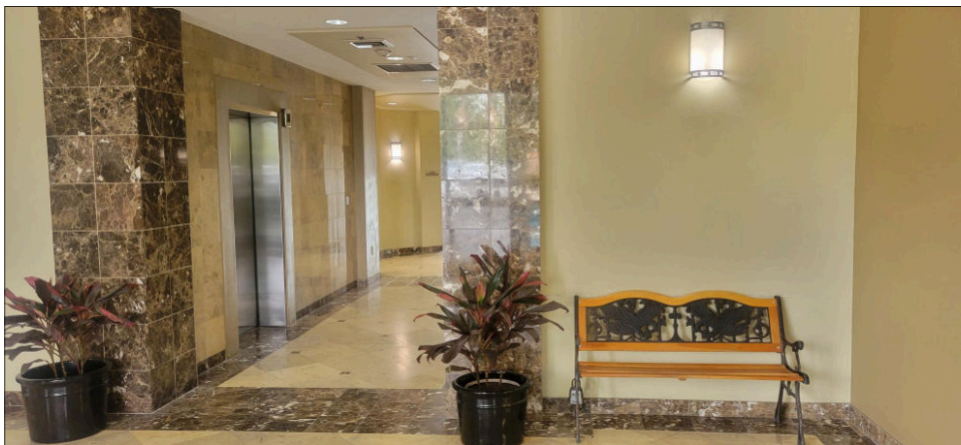
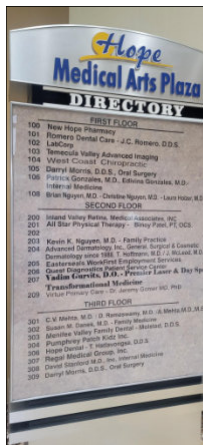
Hope Medical Arts Plaza

29798 Haun Road, Suite 201, Menifee, CA 92586

Mark Esbensen (DRE #00713990) and Luanne Palmer (DRE #01444893) | (951) 491-6300 | www.westmarcre.com

The above information, while not guaranteed, has been secured from sources we believe to be reliable.

Floor plan, site plan, price, tenant mix, and availability subject to change without notice.



Hope Medical Arts Plaza

29798 Haun Road, Suite 201, Menifee, CA 92586

Mark Esbensen (DRE #00713990) and Luanne Palmer (DRE #01444893) | (951) 491-6300 | www.westmarcre.com

The above information, while not guaranteed, has been secured from sources we believe to be reliable.

Floor plan, site plan, price, tenant mix, and availability subject to change without notice.