

FOR LEASE | PROFESSIONAL OFFICE/MEDICAL SPACE

# ALAMO CREEK PROFESSIONAL CENTER

301 ALAMO DR. AND 595 BUCK AVE., VACAVILLE, CALIFORNIA



PROFESSIONAL / MEDICAL / DENTAL OFFICE SPACE  
LOCATED AT INTERSECTION OF BUCK AVENUE AND ALAMO DRIVE

**SPACE** 301-D ; APPROX 1,050 SF; DENTAL/MEDICAL (ORAL SURGERY)  
595-B : APPROX 780 SF; PROF. OFFICE OR MEDICAL

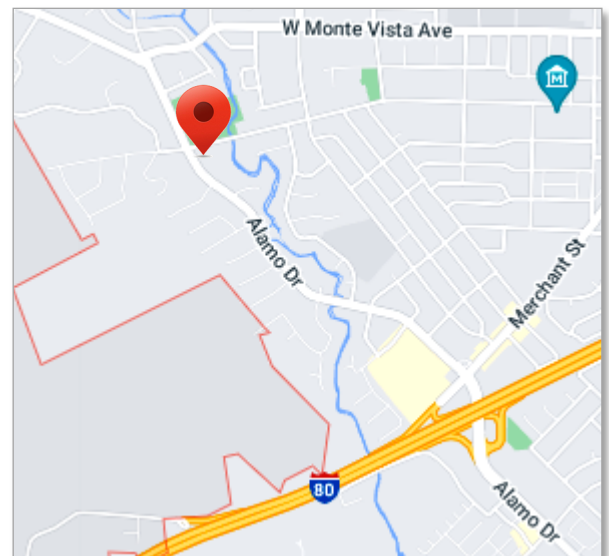
**BUILDING GLA** APPROX.. 13,971 R.S.F.

**BASE RENT** \$2.35 PER SF

**YEAR BUILT** 1975

**BUILD-OUT** SEE ATTACHED SPACE PLANS

- AMENITIES**
- AMPLE ON-SITE PARKING
  - EXCELLENT STREET VISIBILITY
  - LOCATED IN NORTH VACAVILLE; 0.5 MI. TO I-80 FWY
  - CURRENT TENANTS INCLUDE MEDICAL, DENTAL, WELLNESS AND GENERAL OFFICE USERS ALIKE.
  - MOVE-IN READY.



The information provided herein has been obtained from sources deemed reliable. Summit Properties does not guaranty its accuracy.

**CONTACT:**

Mary Ann Rollison  
maryann@summitprops.com  
707-479-0465  
DRE #01055428

## Alamo Creek Professional Center: The Ideal Location for Your Business

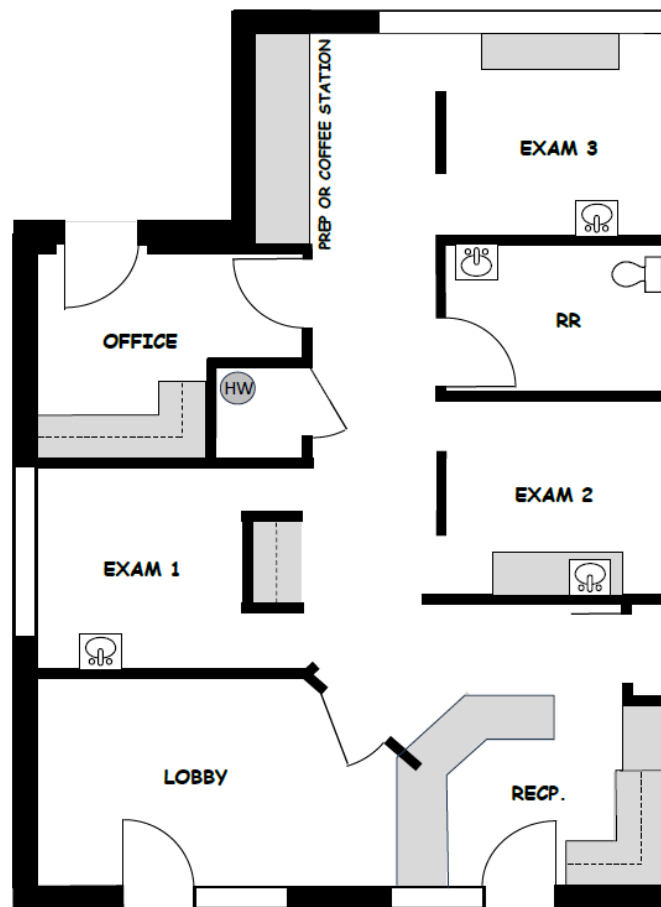
Situated at the prominent intersection of Buck Avenue and Alamo Drive, Alamo Creek Professional Center offers premium office space with easy access to Interstate 80.

As a central hub in Solano County, Vacaville provides an unparalleled strategic advantage, positioning you perfectly between the economic powerhouses of the San Francisco Bay Area and Sacramento. Just 20 minutes from the world-renowned Napa Valley, you and your clients can enjoy a professional environment with a great quality of life.

With a pro-business philosophy, affordable housing, and a **strong sense of community**, Vacaville is a smart choice for professionals and business owners looking for an excellent environment to both conduct business and thrive

### SPACE PLAN

#### 301-D



Mary Ann Rollison  
707-479-0465  
marollison@sbcglobal.net  
Lic. No. 01055428

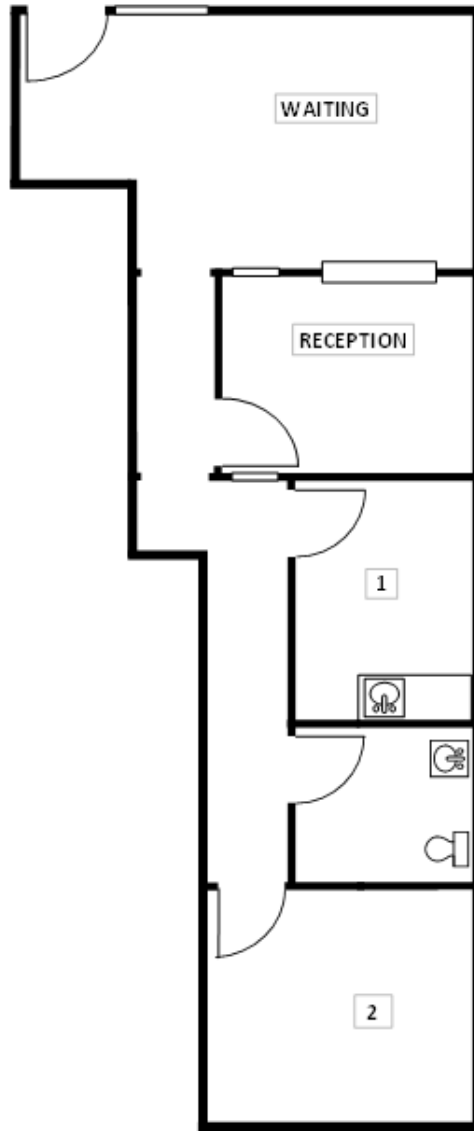
### ALAMO CREEK PROFESSIONAL CENTER

301 Alamo Dr., Suite D  
Vacaville, CA 95688

Approx 1050 USF; 1050 RSF  
(not to scale)

SPACE PLAN

595 -B BUCK AVE.



Mary Ann Rollison  
707-479-0465  
marollison@sbcglobal.net  
Lic. No. 01055428

**ALAMO CREEK PROFESSIONAL CENTER**

301 Alamo Dr., Suite D  
Vacaville, CA 95688

Approx 1050 USF; 1050 RSF  
(not to scale)