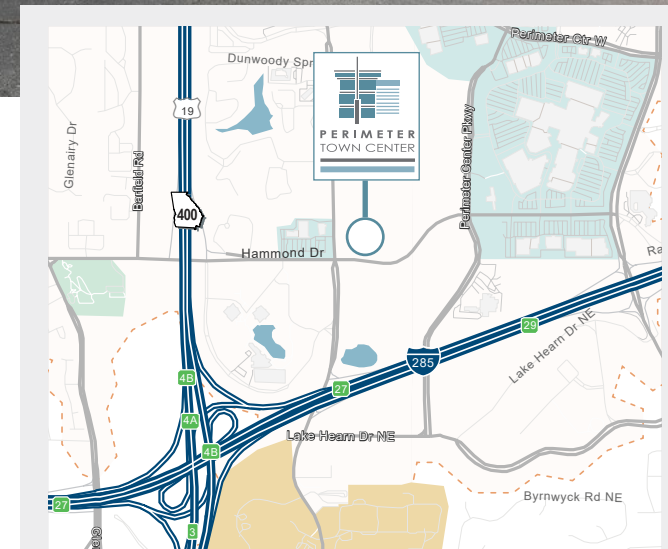


Medical/Dental/Research Space

6105-A Peachtree Dunwoody, Atlanta, GA 30328

HIGHLIGHTS

- Available:
 - SUITE 200 - 4,302 RSF
 - SUITE 205 - 3,069 RSF
 - SUITE 210 - 2,452 RSF
- No hospital use restrictions
- Ample free surface and covered parking (4:1,000)
- On-site gourmet coffee shop and restaurants
- On-site management & building engineers
- 24-hour on-site manned security
- Exceptional ingress/egress

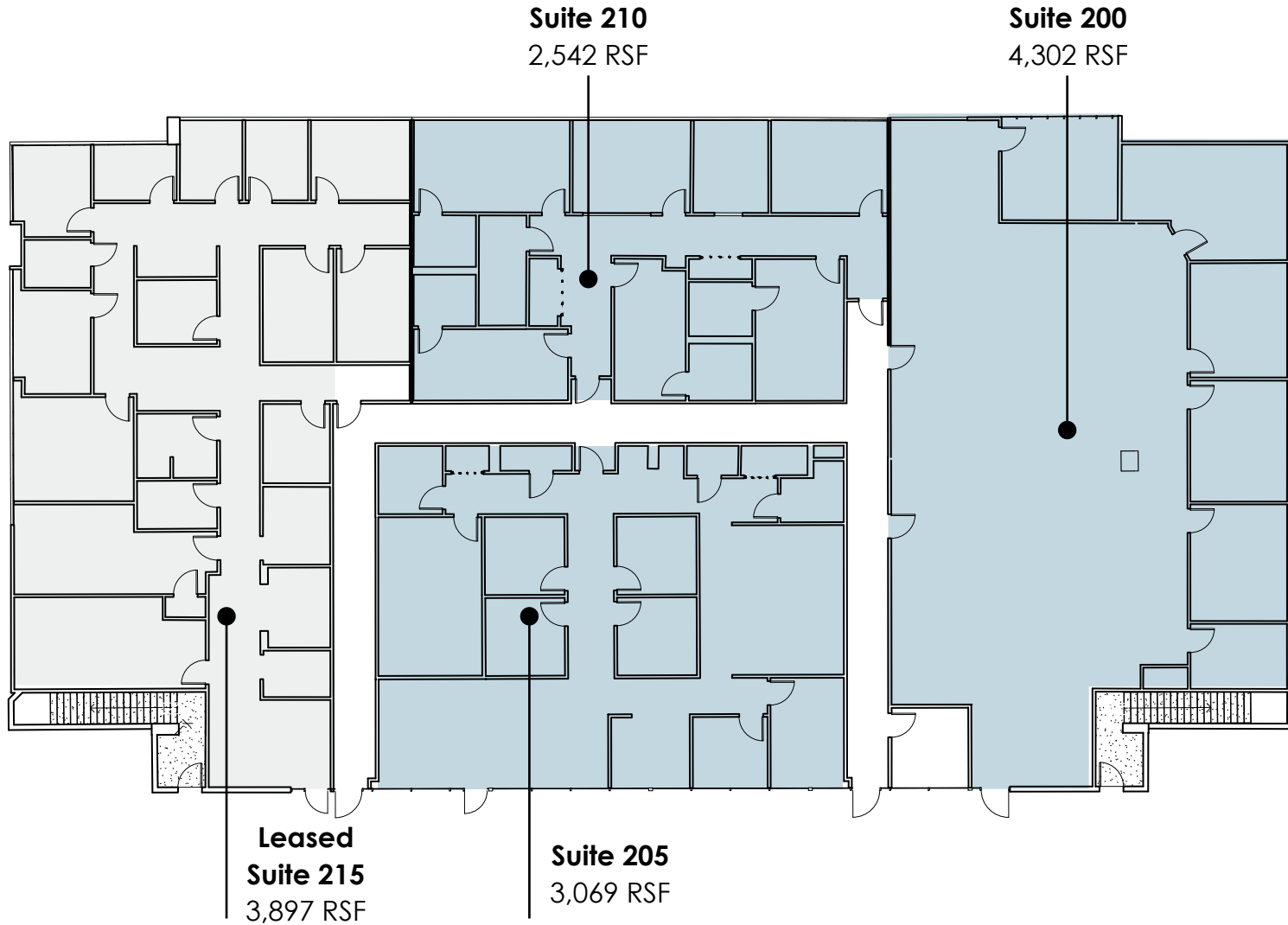
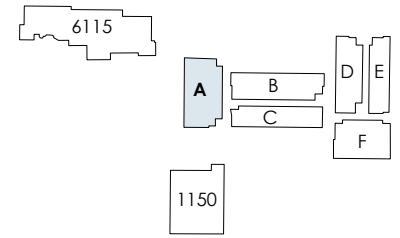


For Office Leasing, please contact
KEVIN EHRINGER
770.913.3960
kehringer@ackermanco.net

Ackerman & Co.

Building 6105 - A | Floor 2

6105 Peachtree Dunwoody Rd, Atlanta, GA 30328



For Office Leasing, please contact
KEVIN EHRINGER
770.913.3960
kehringer@ackermanco.net

Ackerman & Co.