

18203-18235 W. TEN MILE ROAD
SOUTHFIELD, MICHIGAN

RETAIL FOR LEASE
6,200 Square Feet Available



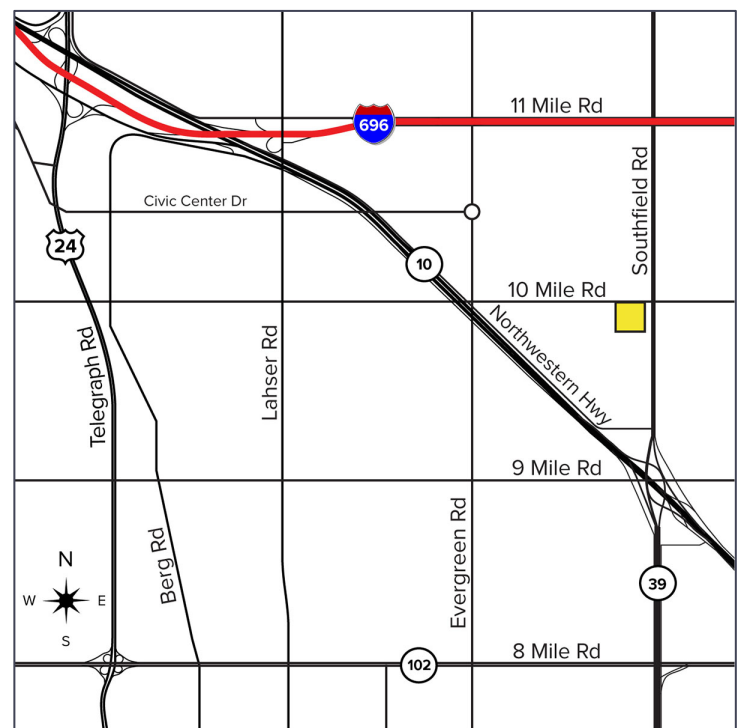
**SIGNATURE
ASSOCIATES**
KNOW SIGNATURE | KNOW RESULTS

RETAIL PLAZA



PROPERTY FEATURES

- 6,200 square feet available
- Prime Southfield retail location on W. 10 Mile and Southfield Roads with strong daily traffic counts and excellent visibility
- Flexible space suitable for retail, restaurant, medical and service users
- Ample surface parking with easy ingress/egress from major thoroughfare
- Join established tenants: Dollar General, Hungry Howie's, Design Menswear & Wing Hong
- Minutes from I-696, Lodge Freeway & Southfield Freeway
- Space may be demised for a national credit tenant
- Lease Rate: \$17.00/sq. ft. NNN



For more information, please contact:

MARVIN PETROUS
(248) 359 0647
mpetrous@signatureassociates.com

BRUCE D. BAJA
(248) 799 3177
bbaja@signatureassociates.com

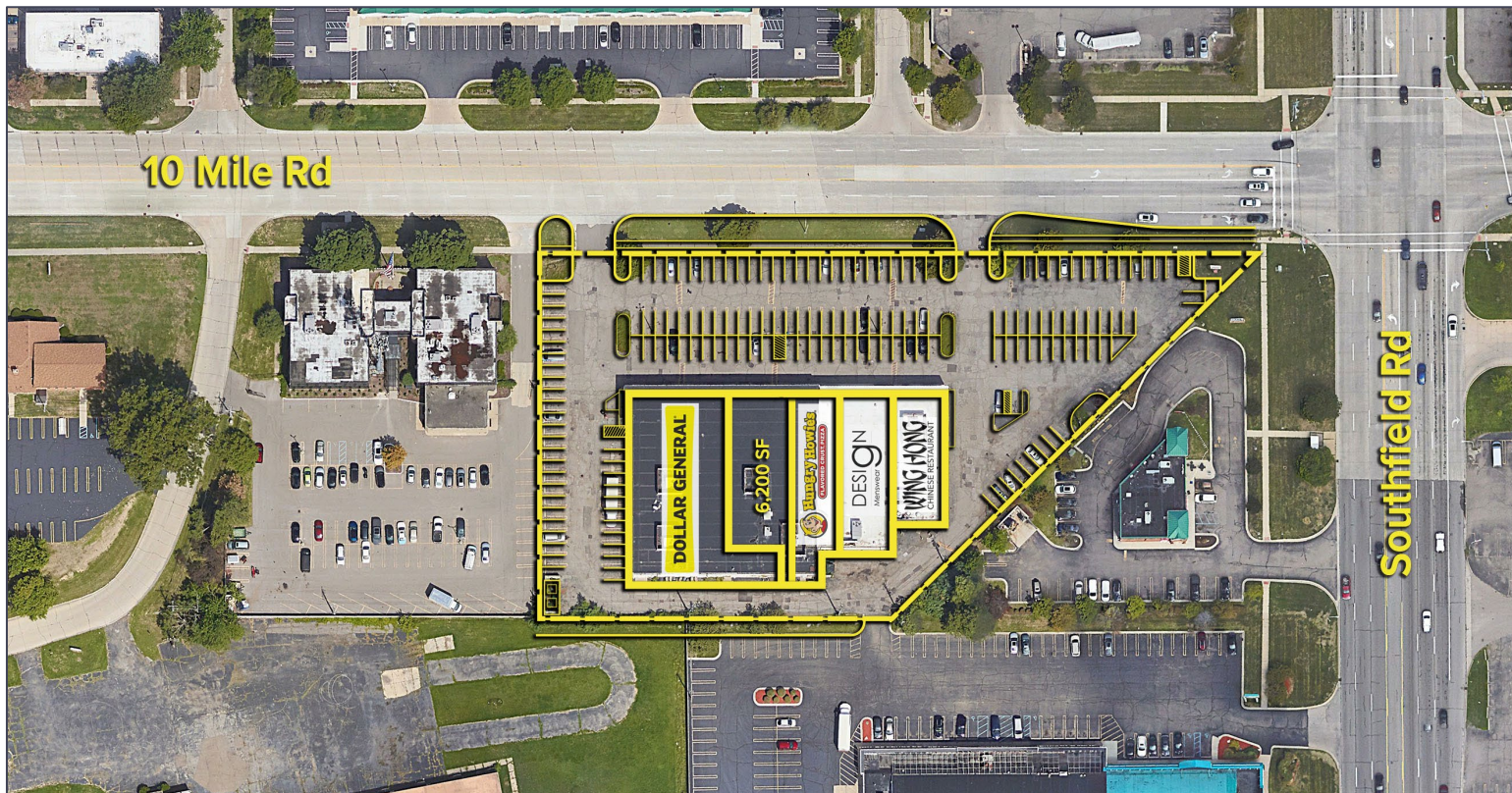
SIGNATURE ASSOCIATES
One Towne Square, Suite 1200
Southfield, MI 48076
www.signatureassociates.com

18203 – 18235 W. Ten Mile Road – Southfield, MI

Retail For Lease

6,200
Square Feet
AVAILABLE

Additional Photos



For more information, please contact:

MARVIN PETROUS

(248) 359 0647

mpetrous@signatureassociates.com

BRUCE D. BAJA

(248) 799 3177

bbaja@signatureassociates.com

SIGNATURE ASSOCIATES

One Towne Square, Suite 1200

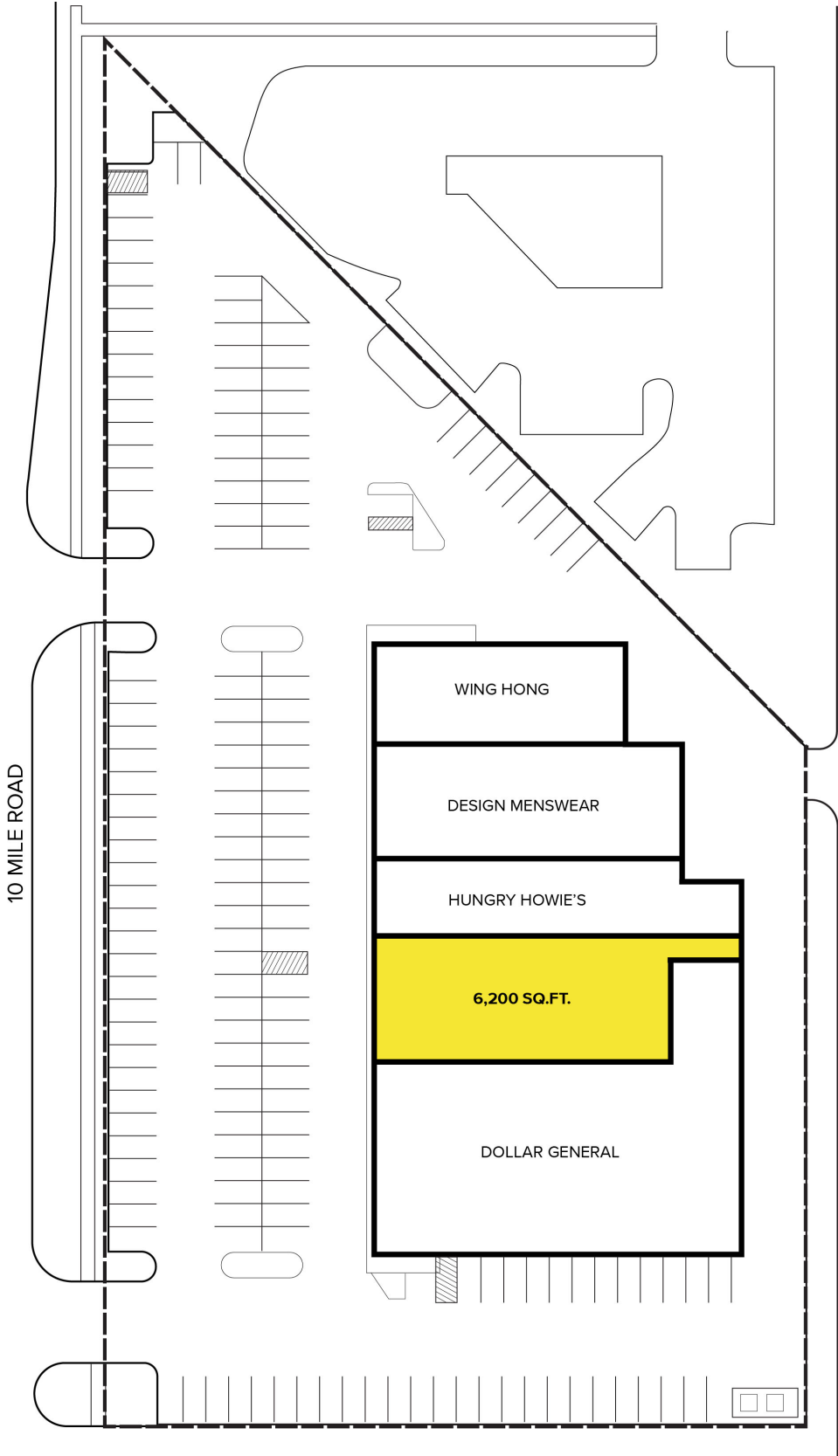
Southfield, MI 48076

www.signatureassociates.com

18203 – 18235 W. Ten Mile Road – Southfield, MI
Retail For Lease

6,200
Square Feet
AVAILABLE

Site Plan



For more information, please contact:

MARVIN PETROUS
(248) 359 0647
mpetrous@signatureassociates.com

BRUCE D. BAJA
(248) 799 3177
bbaja@signatureassociates.com

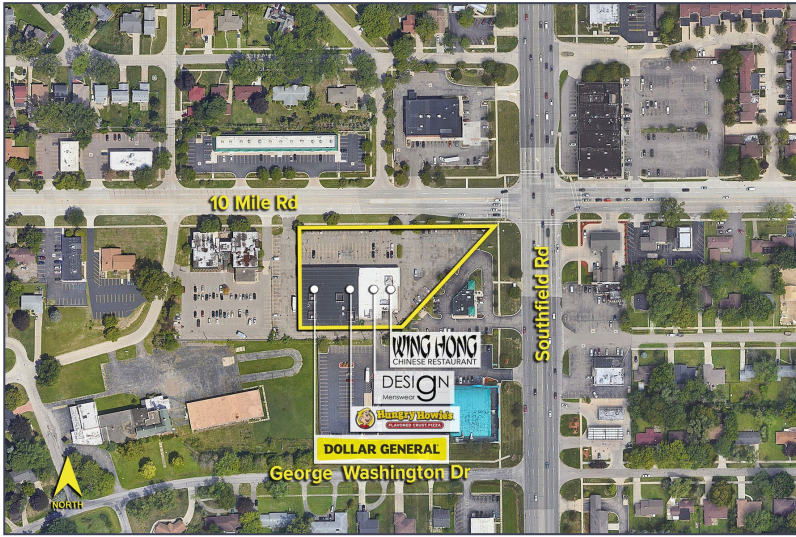
SIGNATURE ASSOCIATES
One Towne Square, Suite 1200
Southfield, MI 48076
www.signatureassociates.com

Information is subject to verification and no liability for errors or omissions is assumed. Price is subject to change and listing withdrawal.

18203 – 18235 W. Ten Mile Road – Southfield, MI

Retail For Lease

6,200
Square Feet
AVAILABLE

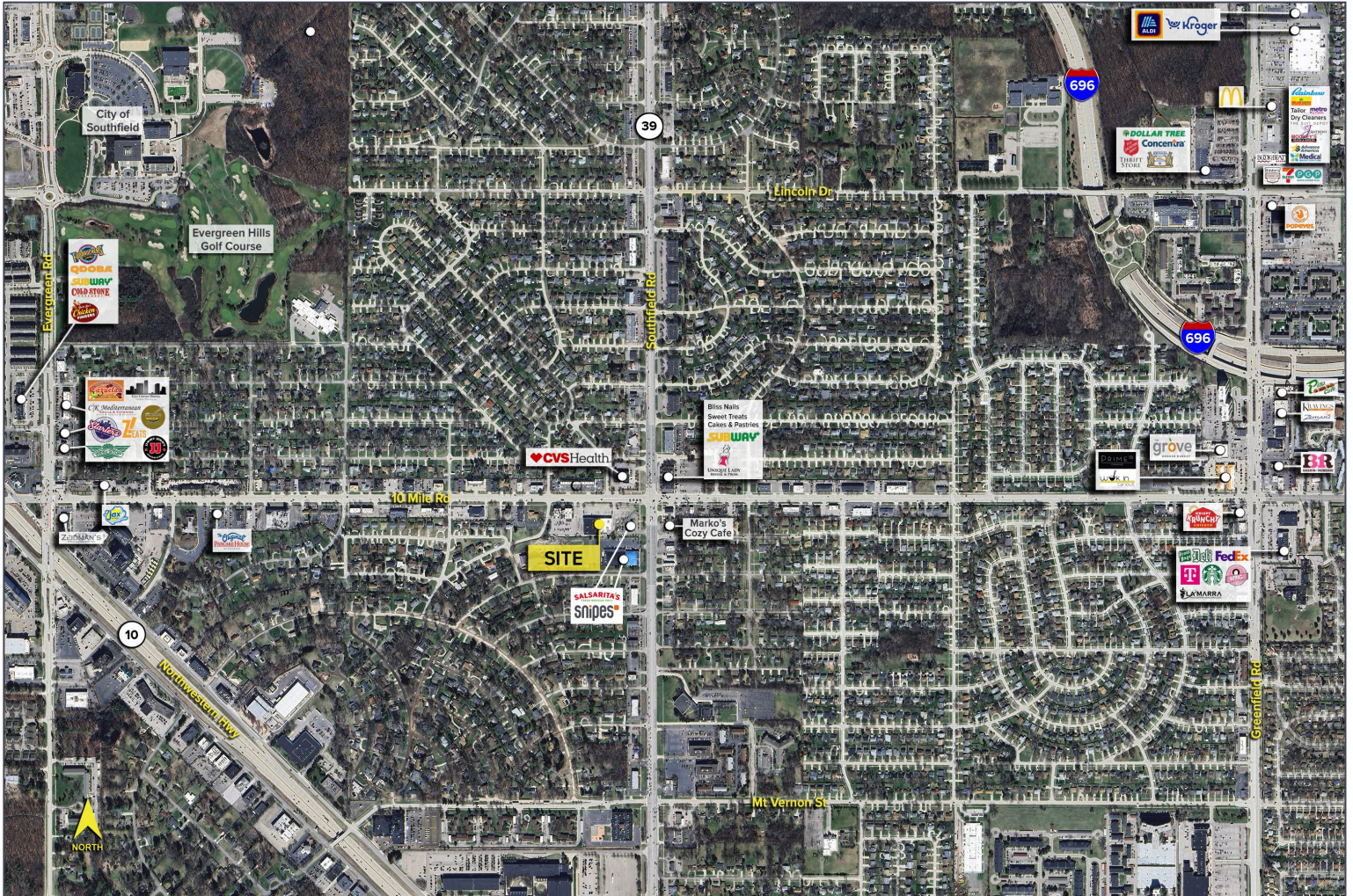


DEMOGRAPHICS

| | POPULATION | MED. HH INCOME |
|--------|------------|----------------|
| 1 MILE | 10,839 | \$78,100 |
| 3 MILE | 120,800 | \$76,459 |
| 5 MILE | 341,323 | \$80,874 |

TRAFFIC COUNTS (TWO-WAY)

| | |
|--------|----------------------------------|
| 25,722 | Ten Mile Rd. E of Southfield Rd. |
| 22,733 | Ten Mile Rd. W of Southfield Rd. |
| 73,854 | Southfield Rd. N of Ten Mile Rd. |
| 77,954 | Southfield Rd. S of Ten Mile Rd. |



For more information, please contact:

MARVIN PETROUS
(248) 359 0647
mpetrous@signatureassociates.com

BRUCE D. BAJA
(248) 799 3177
bbaja@signatureassociates.com

SIGNATURE ASSOCIATES
One Towne Square, Suite 1200
Southfield, MI 48076
www.signatureassociates.com