

# AVAILABLE FOR LEASE

3605 Woodhead Dr. Unit 112  
Northbrook, IL 60062



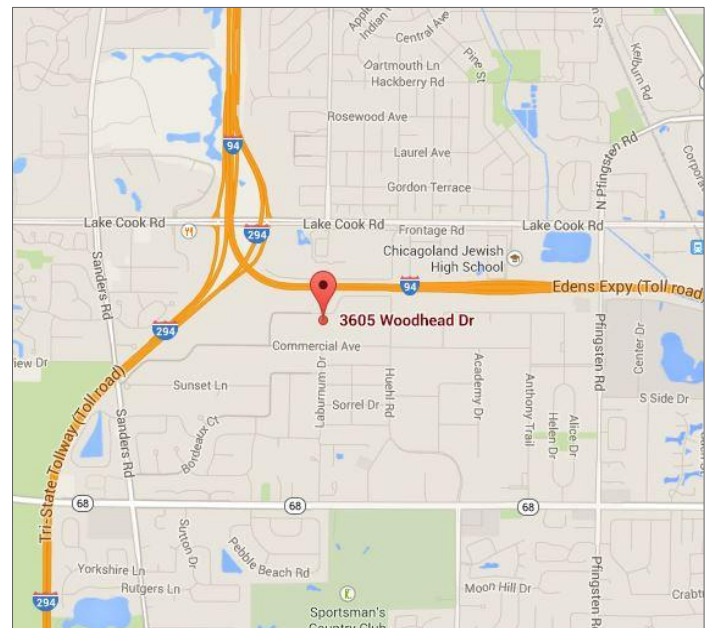
1,163-1,955 SF

**OFFICE SPACE**

\$14.00 PSF

MODIFIED GROSS

- **1,163-1,955 SF**
- 2 Private offices | Large general office area
- AT&T Fiber now installed in building
- Plenty of parking, 24-hour access, dog-friendly building.
- Common area washroom & lunchroom.
- Professionally managed by Key Investment & Management Inc.



4/14/2026

**FOR FURTHER INFORMATION CONTACT:**

Kimberly Hess

Office: 630.932.5757

[khess@key-investment.com](mailto:khess@key-investment.com)



**KEY INVESTMENT**  
& Management Inc.

Office: 630.932.5757

Fax: 630.932.5755

1263 S. Highland Ave., Suite 2W,

Lombard, IL 60148

[www.key-investment.com](http://www.key-investment.com)

Real Estate

Brokerage

Leasing

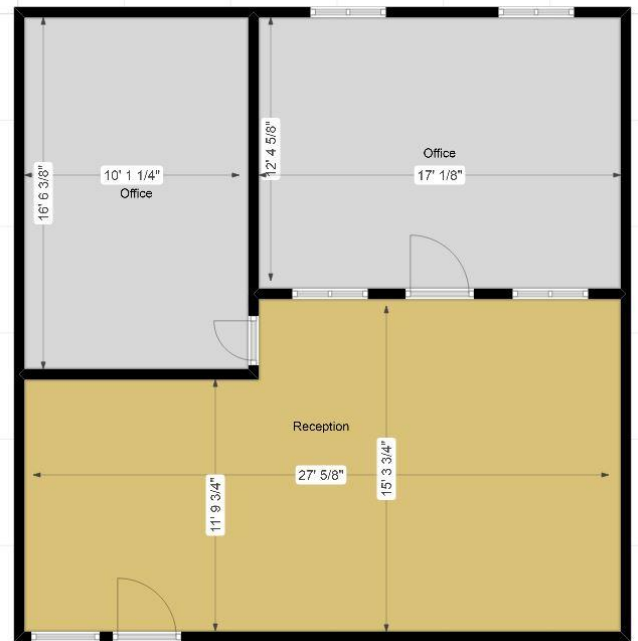
Management

3605 N Woodhead Dr.  
Unit # 112  
Northbrook, IL 60062

1263 S. Highland Ave  
Lombard, IL 60148  
Office: 630.932.5757 Fax: 630.932.5755  
[www.key-investment.com](http://www.key-investment.com)  
Kimberly Hess  
khess@key-investment.com



# AVAILABLE FOR LEASE



## PROPERTY SPECIFICATIONS

Building Size:	21,070
Available Space:	1,163-1,955 SF
Year Built:	1972
Zoning:	C3
Parking:	Open Lot
Ceiling Height:	10'
Power:	200 AMP
Washrooms:	2 Common area
Sprinklered:	No
Utilities:	Prorated Gas & Electric
Real Estate Taxes:	Included
CAM:	Included
Possession:	5/1/2026
Lease Term:	Minimum 1 year
<b>Lease Rate:</b>	<b>14.00 PSF</b>



## KEY INVESTMENT & Management Inc.

Office: 630.932.5757  
Fax: 630.932.5755  
1263 S. Highland Ave., Suite 2W,  
Lombard, IL 60148  
[www.key-investment.com](http://www.key-investment.com)

Real Estate

Brokerage

Leasing

Management