



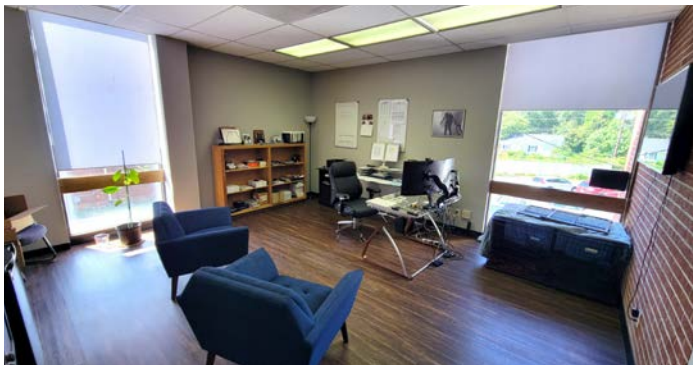
OFFICE SPACE | **FOR LEASE**

6405 WILKINSON BOULEVARD | BELMONT

Great office space available fronting the heavily trafficked Highway 74/29, less than a block from Main Street. Great access to downtown Belmont, I-85 and I-485.

**ZACH DANIEL, CCIM**  
c 704 560 1192  
zdaniel@mecacommercial.com





## PROPERTY INFORMATION

### SF\*

3,716 SF - Suite 2B  
1,700± SF - 2nd Building

### PARCEL ID

12103155

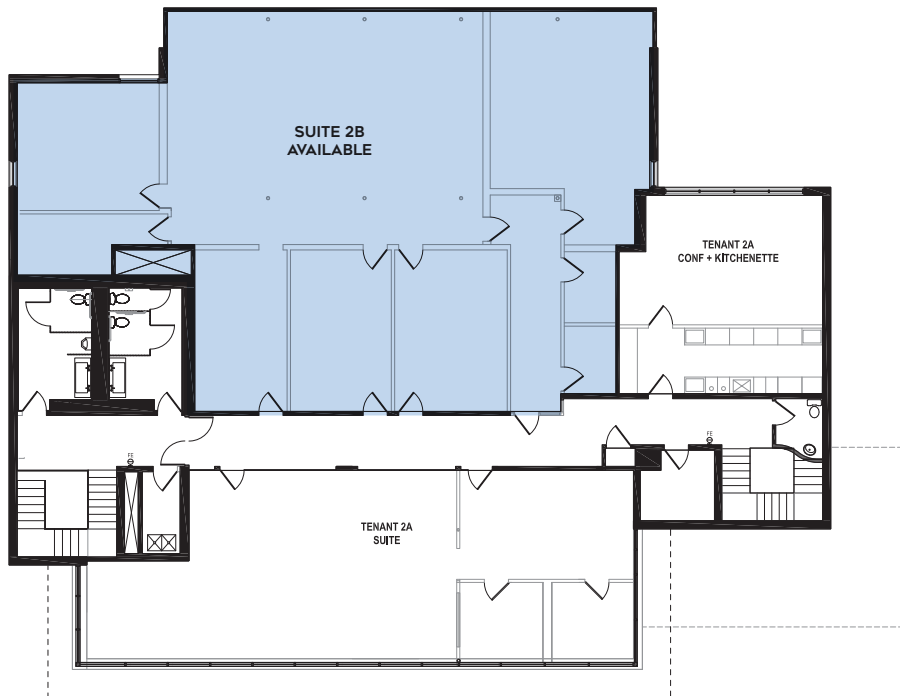
### FEATURES

- Future exterior and interior renovations
- New private entrances to every suite
- Common hall/bathrooms (to be renovated)
- Excellent visibility/accessibility to Wilkinson and I-85
- Close to shops/dining/entertainment
- TIA package available

### LEASE RATE

Call Broker for pricing

SECOND FLOOR



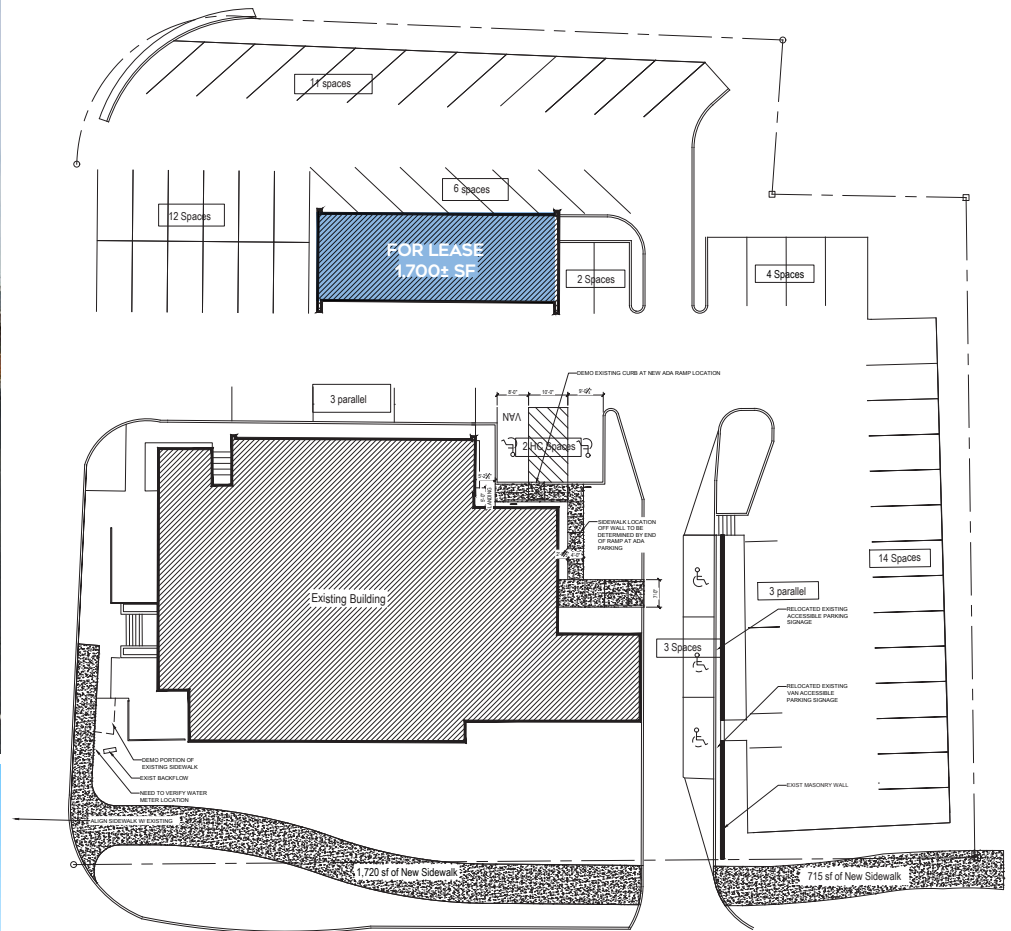
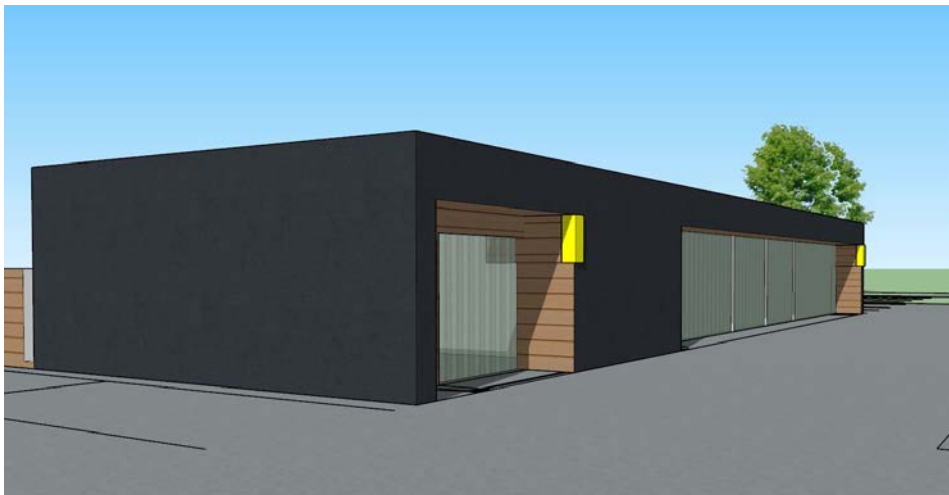
**ZACH DANIEL, CCIM**  
c 704 560 1192  
zdaniel@mecacommercial.com

MECA Commercial Real Estate  
2216 Monument Street  
Charlotte, NC 28208  
704 971 2000



**MECA**  
COMMERCIAL REAL ESTATE

2ND FLOOR WINDOWS INSTALLED  
WITH NEW LEASE



**ZACH DANIEL, CCIM**  
c 704 560 1192  
zdaniel@mecacommercial.com

MECA Commercial Real Estate  
2216 Monument Street  
Charlotte, NC 28208  
704 971 2000



**MECA**  
COMMERCIAL REAL ESTATE

**mecacommercial.com**

© 2024 Metro Realty, LLC. All rights reserved. Metro Realty, LLC fully supports the principles of the Fair Housing Act and the Equal Opportunity Act. Each franchise is independently owned and operated. \*The land acreage and/or building square footage was obtained from the County's Geographical Information System or other electronic resources. For exact square footage and/or acreage, we recommend that prior to purchase, a prospective Buyer/Tenant obtain a boundary survey or have the building measured professionally.