

Commercial Property for Sale in Ramsey

14391 AZURITE STREET NW | RAMSEY, MN

2,644 Sq. Ft. Building

2.41 Acre Site

I-1 Light Industrial Zoning



Cetra Partners

4455 White Bear Parkway, Suite 600
White Bear Lake, MN 55110

Dan Friedner | Principal
M: 612-599-7864
E: dan@cetrapartners.com

Jay Chmielecki | Principal
M: 612-275-3772
E: jay@cetrapartners.com

Patrick Cullen | Principal
M: 651-308-4271
E: patrick@cetrapartners.com

Property Overview

LOCATION

14391 Azurite Street NW | Ramsey, MN

BUILDING SIZE

Approx. 2,644 SF Total

SITE SIZE

2.41 Acres

SALE PRICE

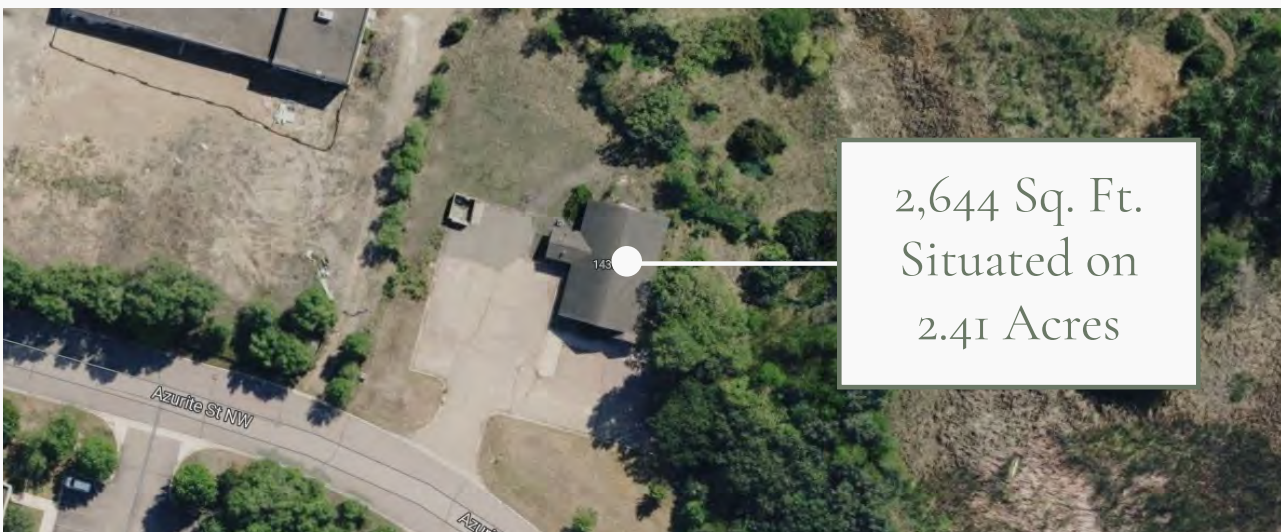
\$575,000

2026 EST. RE TAXES

\$5,160.12

PROPERTY HIGHLIGHTS

- Central Ramsey location
- Possible expansion opportunity
- Built in 2004
- Anoka County PID: 27-32-25-41-0011
- I-1 Light Industrial Zoning permits a variety of different uses, including:
 - Office
 - Warehouse
 - Research labs
 - Light manufacturing



Commercial Property for Sale in Ramsey

14391 AZURITE STREET NW | RAMSEY, MN

GIS Map -
2.41 Acre Site



Cetra Partners

Dan Friedner | Principal
M: 612-599-7864
E: dan@cetrapartners.com

Jay Chmielecki | Principal
M: 612-275-3772
E: jay@cetrapartners.com

Patrick Cullen | Principal
M: 651-308-4271
E: patrick@cetrapartners.com

cetrapartners.com

Commercial Property for Sale in Ramsey

14391 AZURITE STREET NW | RAMSEY, MN

Aerial Map View -
2,644 Sq. Ft. Total

