

CHASE PLAZA - SUITE 1409 3705 W MEMORIAL RD OKLAHOMA CITY, OK 73134



MEMORIAL ROAD FRONTAGE

Located in the heart of a rapidly developing area of medical offices and retail along the Memorial Road Corridor, this property offers an opportunity for expansion, or a great location for a new venture.

OFFERING SUMMARY

Available SF:	±1,018 RSF
Lease Rate:	\$11.00 SF/yr NNN (\$3.85 estimate) Tenant pays janitorial and utilities
Building Size:	159,341
Market:	North Oklahoma City
Submarket:	Memorial Corridor

TOM FIELDS

tfields@priceedwards.com
O: 405.239.1205 C: 405.641.0598

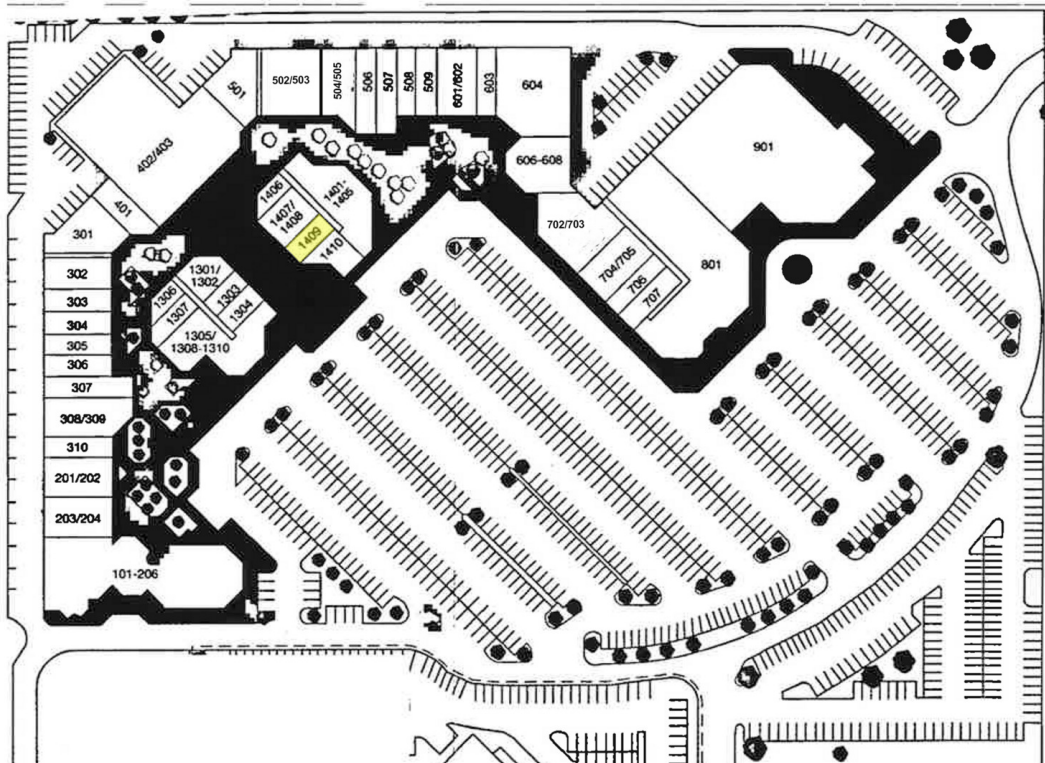
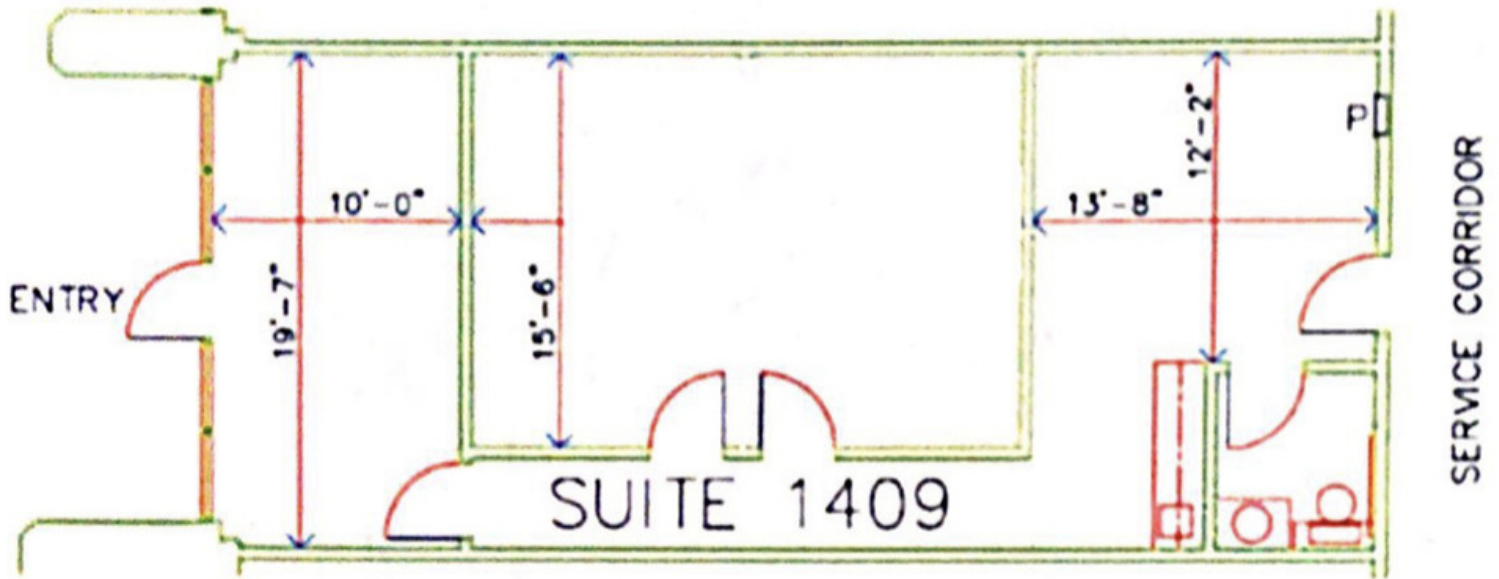
GEORGE WILLIAMS, CCIM

gwilliams@priceedwards.com
O: 405.239.1270 C: 405.657.7800

CRAIG TUCKER

ctucker@priceedwards.com
O: 405.239.1202 C: 405.641.3218

CHASE PLAZA - SUITE 1409 3705 W MEMORIAL RD OKLAHOMA CITY, OK 73134



TOM FIELDS

tfields@priceedwards.com
O: 405.239.1205 C: 405.641.0598

GEORGE WILLIAMS, CCIM

gwilliams@priceedwards.com
O: 405.239.1270 C: 405.657.7800

CRAIG TUCKER

ctucker@priceedwards.com
O: 405.239.1202 C: 405.641.3218