

7200 South Hazel Street

7200 SOUTH HAZEL STREET

Pine Bluff, AR 71603

LEASE

PRESENTED BY:

TIFFANI SILVEY

Phone: 501.499.4739

tiffani.silvey@svn.com

AR #SA00097857

NATHAN HUTCHINS

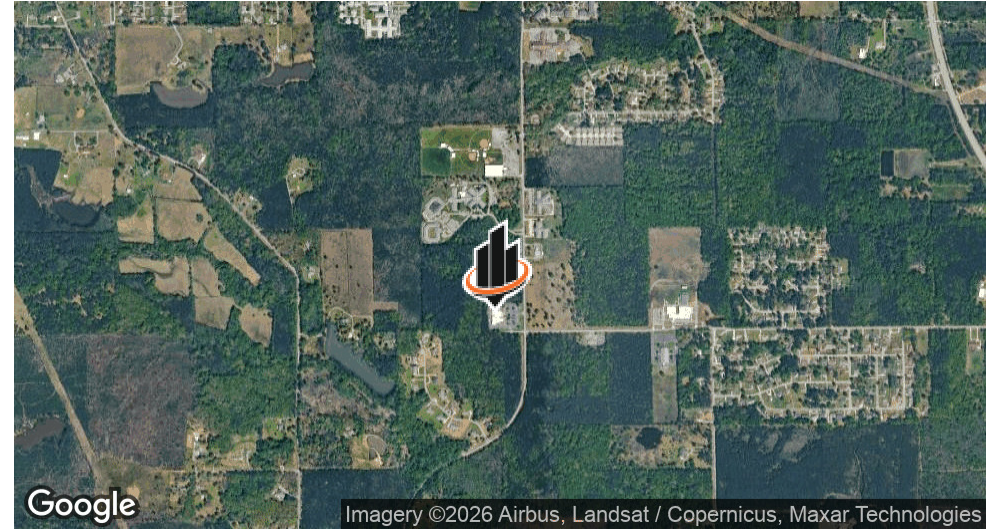
Phone: 501.912.3660

nathan.hutchins@svn.com

AR #PB00063530



PROPERTY SUMMARY



PROPERTY HIGHLIGHTS

- Prime location in Pine Bluff, AR
- Modern and well-maintained building
- Ample parking for tenants and customers
- High visibility from South Hazel Street
- Easy access to major roadways and highways

OFFERING SUMMARY

LEASE RATE:	\$30 SF/yr (NNN)
BUILDING SIZE:	24,050 SF

TIFFANI SILVEY

O: 501.499.4739
tiffani.silvey@svn.com
AR #SA00097857

NATHAN HUTCHINS

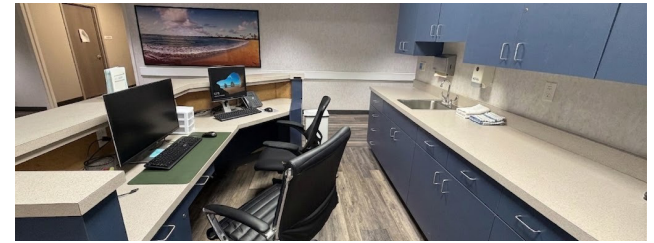
O: 501.912.3660
nathan.hutchins@svn.com
AR #PB00063530

PROPERTY DESCRIPTION

This medical office space offers 24,050 square feet of specialized clinical and administrative area within a prominent healthcare facility. The suite is designed for high-efficiency patient care, featuring a dedicated x-ray / procedure room, multiple nurse stations, and private offices/exam rooms. Staff and practitioners benefit from private restrooms and a convenient rear entrances, while patients are welcomed through a shared, professional common waiting area.

Building may be subdivided to accommodate leasing needs.

ADDITIONAL PHOTOS



TIFFANI SILVEY
O: 501.499.4739
tiffani.silvey@svn.com
AR #SA00097857

NATHAN HUTCHINS
O: 501.912.3660
nathan.hutchins@svn.com
AR #PB00063530



TIFFANI SILVEY
O: 501.499.4739
tiffani.silvey@svn.com
AR #SA00097857

NATHAN HUTCHINS
O: 501.912.3660
nathan.hutchins@svn.com
AR #PB00063530