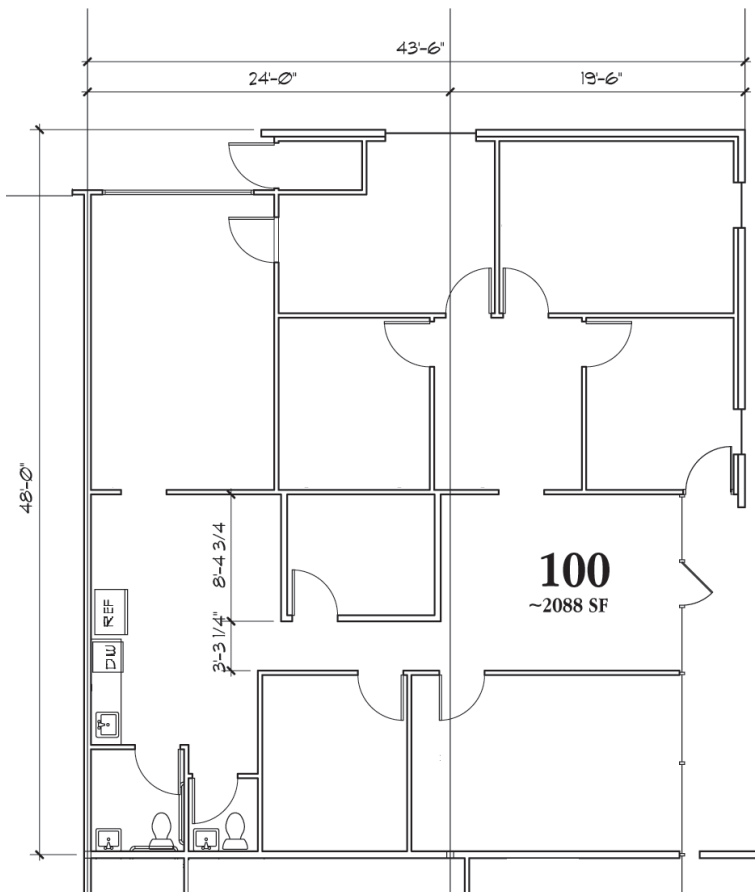


**2,088 SF OFFICE SPACE AVAILABLE
BUILDING 1, SUITE 100**

11700 NE 95TH STREET, SUITE 100, VANCOUVER, WA 98682



**SUITE 100
HIGHLIGHTS & FEATURES**

- 2,088 SF Office Area
- Restrooms
- Kitchenette
- Multiple Private Offices
- High Visibility from NE 117th Ave.
- Located at Signalized Intersection
- Ample Parking
- On-Site Property Management
- Restaurants and Retail Amenities nearby: Los Jalapenos, Columbia Credit Union, Papa John's Pizza, Chevron, Seize the Bagel & Many More

paddencp.com

Available: Now



NOW AVAILABLE! BUILDING 1, SUITE 100

11700 NE 95th Street, Suite 100, Vancouver, WA 98682



LEASING CONTACTS

Coleman Brown, CCIM, Principal Broker

Columbia Commercial, LLC

Coleman@CCPprop.com

360.952.4758

paddencp.com



OWNED & MANAGED BY:



Columbia Commercial
Commercial Leasing | Sales | Property Management



WESTCORE