



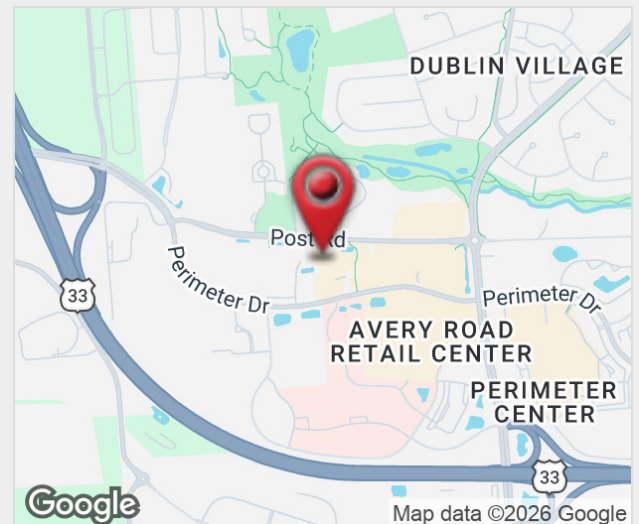
## Perimeter MOB

6670 Perimeter Drive, Dublin, Ohio 43016

### Property Features

- Two-Story, Class "A" Medical Office Building
- Prime Location Adjacent to OhioHealth Dublin Methodist Hospital
- Second Floor Suite Available
- Suite 255 | 1,153 SF Shell Space
- Covered Patient Drop Off/Pick Up at Front Entrance
- Ample Parking (5:1,000 SF Ratio)
- Close Proximity to Numerous Amenities
- Convenient Access to SR-33, SR-161, and I-270

**Lease Rate: Negotiable**  
[www.PerimeterMOB.com](http://www.PerimeterMOB.com)



For more information:

**Philip Bird, SIOR**

614 629 5296 • [pbird@ohioequities.com](mailto:pbird@ohioequities.com)

**Matt Gregory, SIOR, CCIM**

614 629 5234 • [mgregory@ohioequities.com](mailto:mgregory@ohioequities.com)

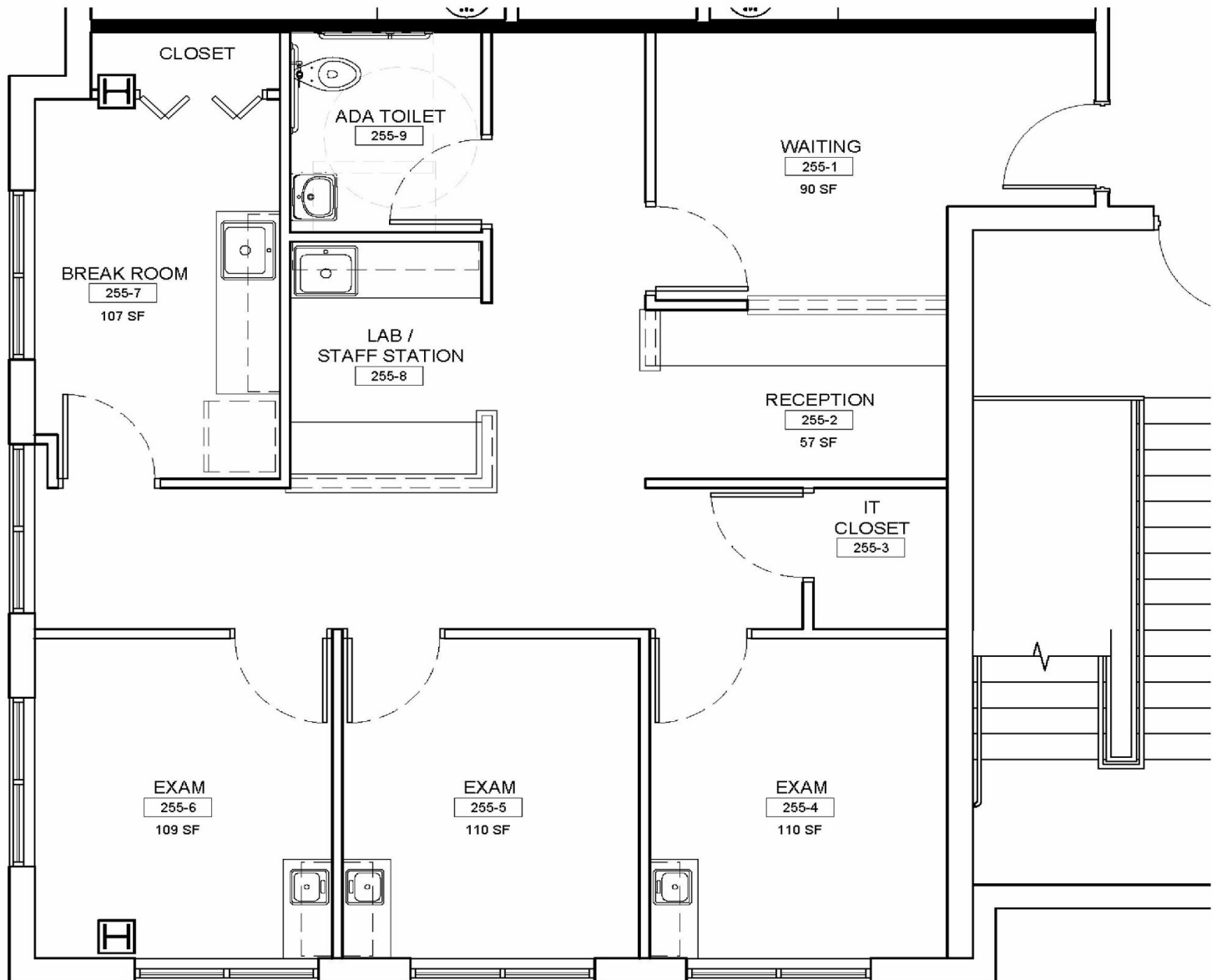
**Mitchell Moore, CCIM**

614 629 5257 • [mmoore@ohioequities.com](mailto:mmoore@ohioequities.com)



SPACE	SPACE USE	LEASE RATE	LEASE TYPE	SIZE (SF)	AVAILABILITY
Suite 255	Medical	NEGOTIABLE	NNN	1,153 SF	VACANT SHELL

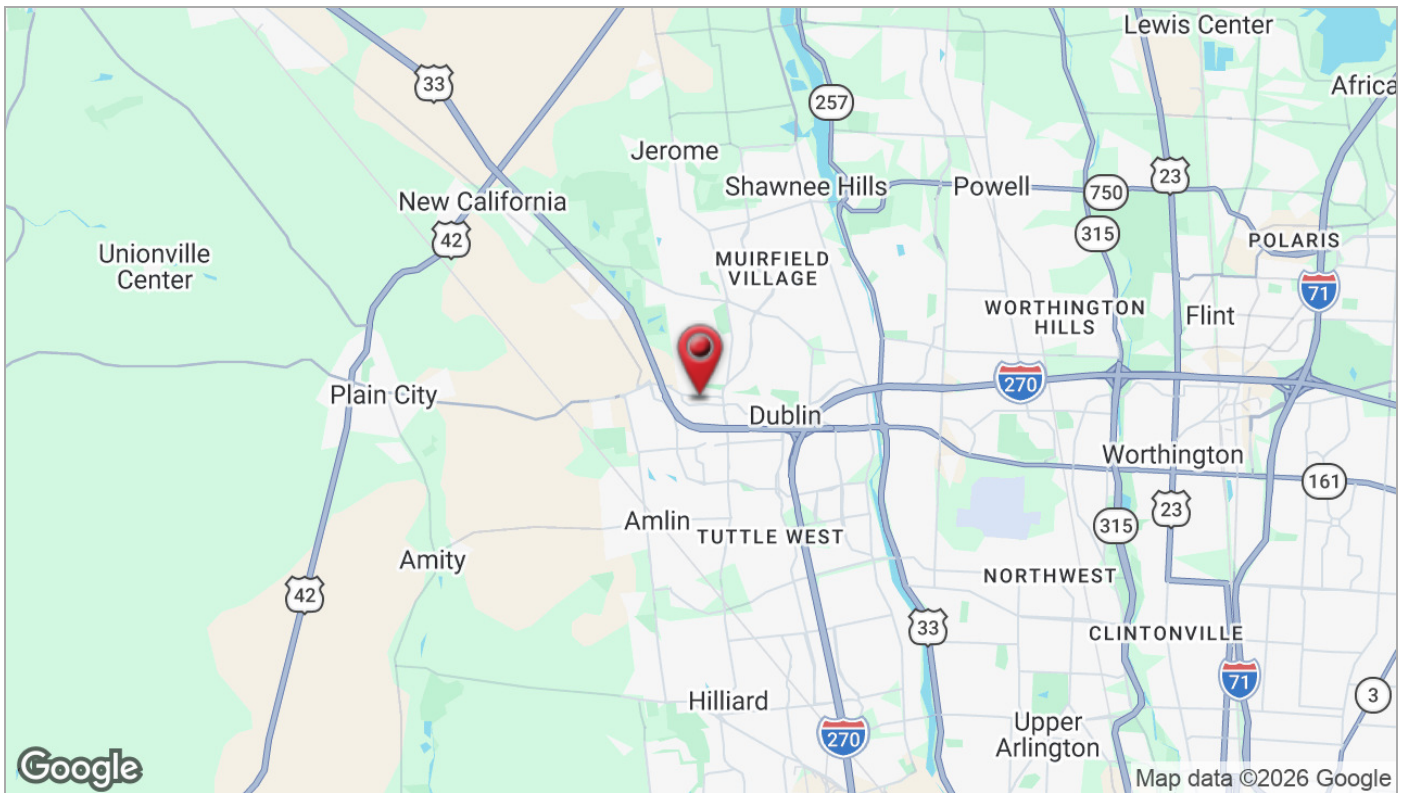
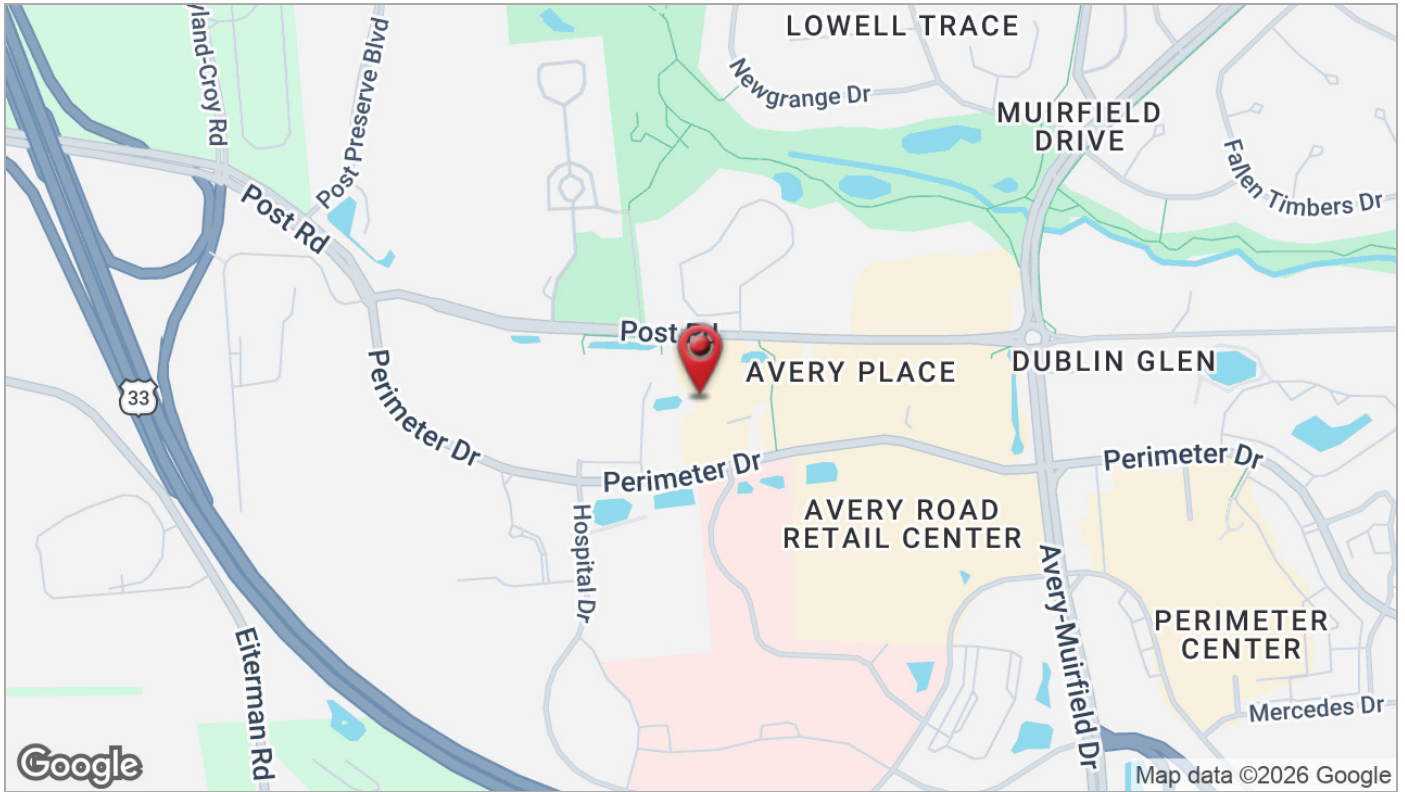
## CONCEPTUAL FLOOR PLAN | SUITE 255

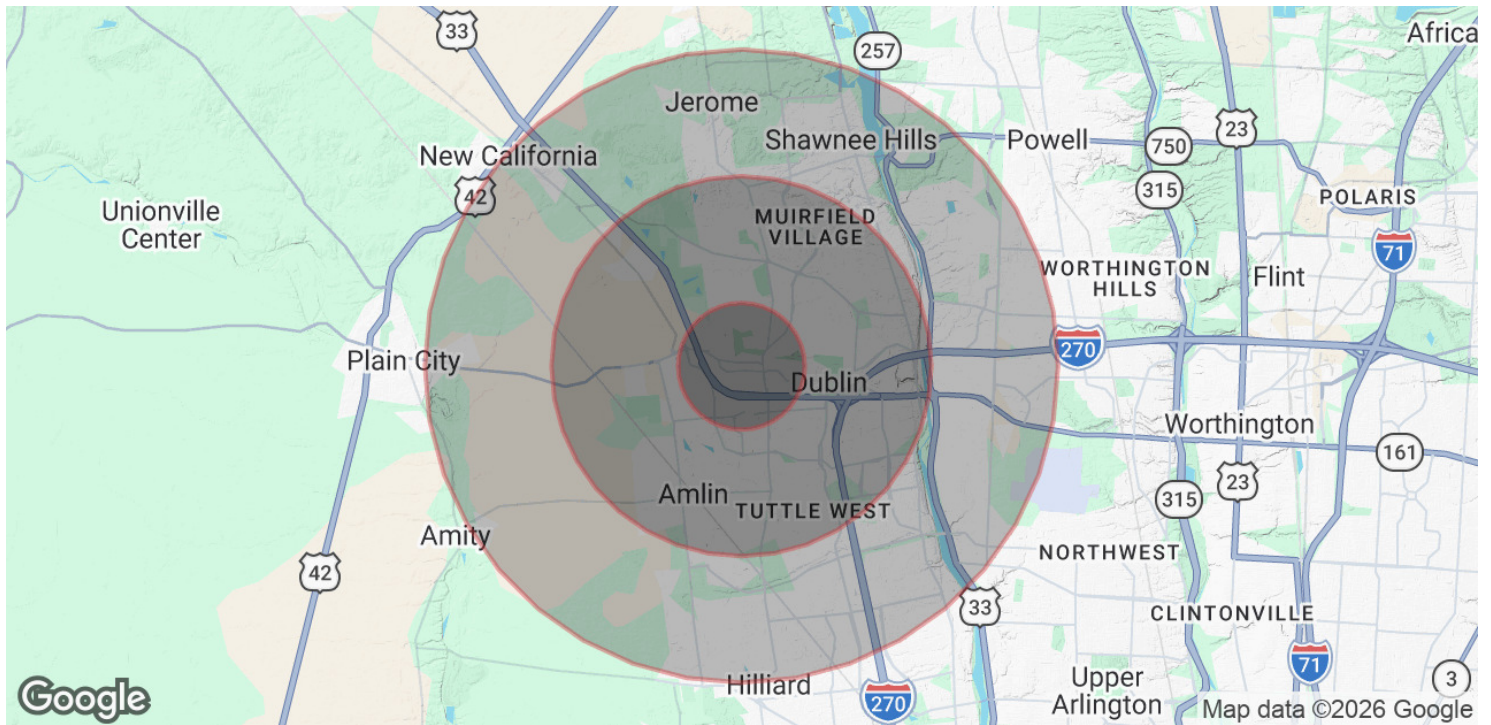






Map data ©2025 Google Imagery ©2025 Airbus, CNES / Airbus, Maxar Technologies, USDA/FPAC/GEO





	1 MILE	3 MILES	5 MILES
<b>POPULATION</b>			
Total Population	5,655	37,900	98,392
Average Age	35.9	35.8	35.7
Average Age (Male)	34.7	35.2	34.9
Average Age (Female)	36.6	36.1	36.3
<b>HOUSEHOLDS &amp; INCOME</b>			
Total Households	2,023	14,275	37,868
# of Persons per HH	2.8	2.7	2.6
Average HH Income	\$121,937	\$117,863	\$110,516
Average House Value	\$279,491	\$323,300	\$345,337

\* Demographic data derived from 2020 ACS - US Census