

STRUCTURE LEGEND

- CABLE / TV**
 - Cable / TV Marker
 - Cable / TV Pedestal
 - Cable / TV Manhole
 - Cable / TV Handhole
 - Cable / TV Cable Box
- ELECTRIC / POWER**
 - Transformer
 - Guy Wire
 - Electric Meter
 - Power Pole/Utility Pole
 - Street Light/Light Pole
 - Electric Panel
 - Electric Box
 - Electric Manhole
 - Electric Handhole
 - Electric / Power Marker
 - Spot Light
- FIBER OPTIC**
 - Fiber Optic Marker
 - Fiber Optic Manhole
 - Fiber Optic Pedestal
- GAS**
 - Gas Meter
 - Gas Valve
 - Gas Fill Cap
 - Gas Manhole
 - Gas Marker
 - Gas Pressure Relief Valve
 - Gas Vault
 - Gas Vent Pipe
- PAVEMENT MARKING**
 - BUS
 - SCHOOL
 - Turn Arrow Left/Right
 - Turn Arrow Left
 - Turn Arrow Right
 - Traffic Arrow Straight
 - Traffic Arrow Straight/Left
 - Traffic Arrow Straight/Right
 - Traffic Arrow U-Turn
 - Handicap Pavement Marking
 - Bike Lane Pavement Marking
- PROPERTY MONUMENTS**
 - Right-of-Way Monument Found
 - Concrete Monument Found
 - Iron Pin Set
 - Iron Pin Found (Rebar found)
 - PK Nail Set
 - PK Nail Found
 - Point
 - Benchmark
- MISCELLANEOUS UTILITIES**
 - Utility Structure
- SEWER**
 - Grease Trap
 - Sanitary Sewer Manhole
 - Cleanout
 - Sanitary Sewer Vent Pipe
 - Sanitary Sewer Marker
 - Sanitary Sewer Force Main Valve
 - Sanitary Sewer Lift Station
- SITE / TOPOGRAPHIC FEATURES**
 - Street Sign
 - Air Condition Unit
 - Bollard
 - Mailbox
 - Satellite Dish
 - Flag Pole
 - Monitoring Well
 - Antenna
 - Column
 - Camera Pole / Camera
 - Bore Hole Location
 - Mill Post
 - Rail Road Mile Post
 - Land Lot Symbol
- STORM / DRAINAGE**
 - Storm Structure Lid
 - Drop Inlet
 - Catch Basin
 - Single Wing Catch Basin
 - Double Wing Catch Basin
 - Weir Inlet
 - Head Wall
 - Junction Box
 - Curb Inlet
 - Flared-in Section
 - Down Spout
 - Square or Round Outlet Structure
- TELEPHONE**
 - Telephone Terminal Box
 - Telephone Marker
 - Telephone Handhole Box
 - Telephone Manhole
 - Telephone Cabinet
- TRAFFIC**
 - Overhead Traffic Signal
 - Traffic Handhole Box
 - Traffic Signal Loop Control Box
 - Traffic & Crosswalk Signal Pole
- WATER**
 - Fire Hydrant
 - Irrigation Control Valve
 - Water Meter
 - Water Valve
 - Fire Department Connection
 - Water Vault
 - Pressure Irrigation Valve
 - Water Vent Pipe
 - Water Valve Marker
 - Water Marker
 - Water Manhole
 - Water Air Release Valve
 - Water Back Flow Preventer
 - Sprinkler Head
 - Sprinkler Valve

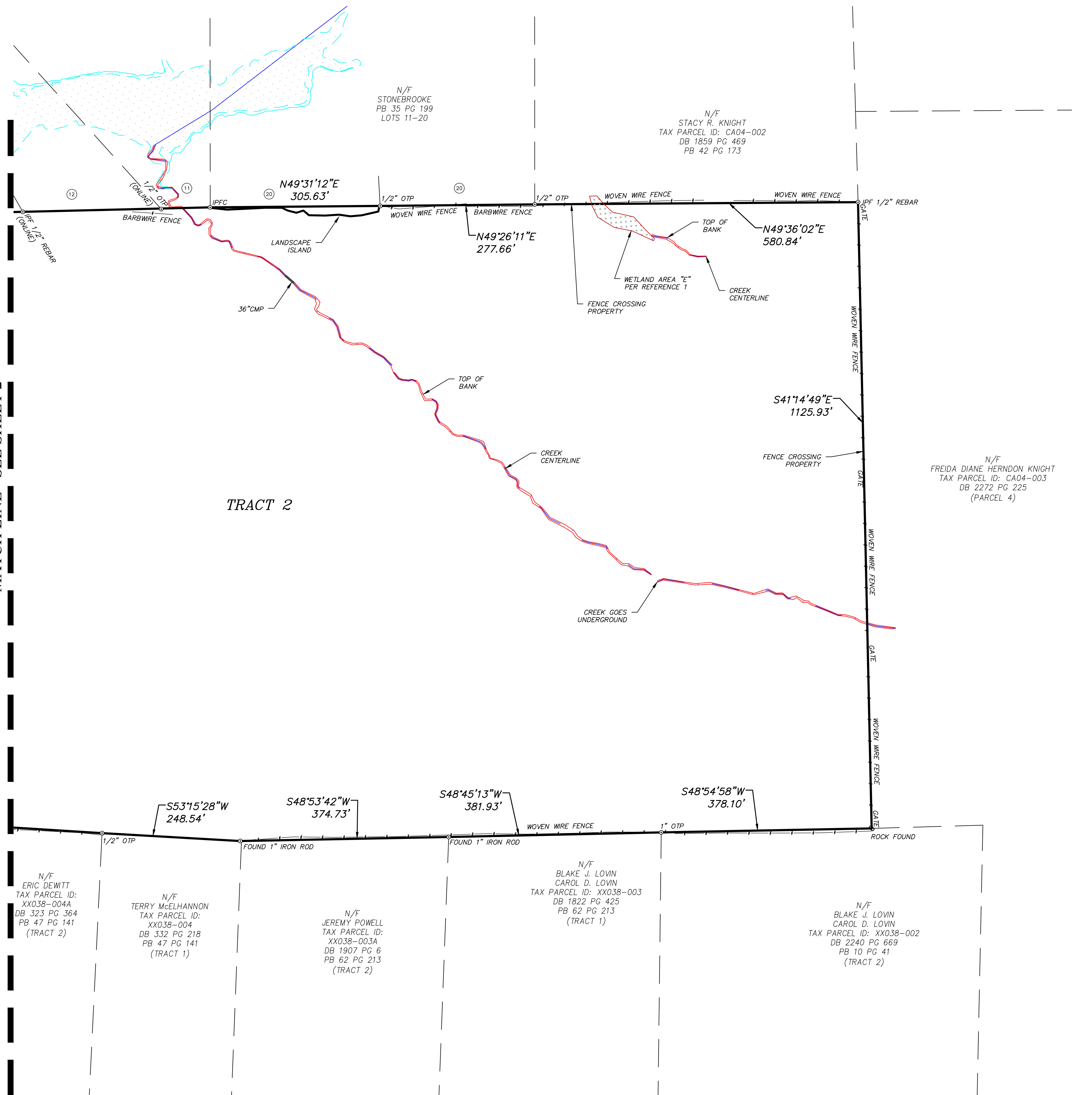
LINETYPES

- PROPERTY**
 - Adjacent Property
 - Property Line
 - Center of Creek
- FENCE LINES**
 - Barb Wire Fence
 - Chain Link Fence
 - Wood Fence
 - Woven Wire Fence
- SITE / TOPOGRAPHIC FEATURES**
 - Guardrail
- EXISTING OVERHEAD**
 - Overhead Wires
- EXISTING UNDERGROUND**
 - Cable
 - Electric
 - Fiber Optic
 - Gas
 - Telecommunications
 - Water
 - Television
 - Storm Drainage Line
 - Sanitary Sewer

ABBREVIATIONS

APPROX. #4	Approximate	IPS	Iron Pin Set
C&G	Curb and Gutter	LP	Light Pole
CLF	Chain Link Fence	MW	Monitoring Well
CMP	Corrugated Metal Pipe	N/F	Now or Formerly
CO	Clean Out	OCS	Outlet Control Structure
OPP	Corrugated Plastic Pipe	OTP	Open Top Pipe
OTP	Crimp Top Pipe	PB	Plot Book
DB	Deed Book	PG	Page
DI	Drop Inlet	PKF	PK Nail Found
DE	Drainage Easement	PKS	PK Nail Set
EOP	Edge of Pavement	POB	Point of Beginning
EPP	Electric Power Pole	POC	Point of Commencement
EPAN	Electric Panel	PVC	Polyvinyl Chloride Pipe
ESMT	Easement	RCB	Rebar Capped
FES	Flared End Section	RCF	Reinforced Concrete Pipe
FEE	Finish Floor Elevation	RWC	Right of Way Monument
FH	Fire Hydrant	SSE	Sanitary Sewer Easement
FLGP	Flag Pole	SSMh	Sanitary Sewer Manhole
FOMRK	Fiber Optic Marker	TRAN	Transformer
GA	Georgia	TTB	Telephone Terminal Box
GM	Gas Meter	TSIGP	Traffic Signal Pole
GW	Guy Wire	TSIGB	Traffic Signal Loop Control Box
HDR	Hard Roll	USTR	Utility Structure
H.W.	Hard Wood	VCP	Vitrified Clay Pipe
HW	Headwall	W.D.F.	Wood Fence
ICV	Irrigation Control Valve	WM	Water Meter
I.E.	Invert Elevation	WV	Water Valve
IPF	Iron Pin Found	XP	Crosswalk Signal Pole

MATCH LINE - SEE SHEET 2



PEC+ 60 YEARS
 Planners & Engineers Collaborative+

LAND PLANNING + LANDSCAPE ARCHITECTURE + CIVIL ENGINEERING
 ARBORISTS + SURVEYING & CONSTRUCTION + WATER RESOURCES

350 RESEARCH COURT PEACHTREE CORNERS, GEORGIA 30092
 (770)451-2741 WWW.PEC.PLUS
 C.O.A.-LSF000004

REV	DATE	DESCRIPTION	BY
5			
4			
3			
2			
1			

REVISIONS

LAND LOT(S) 316
 DISTRICT G.M.D.

ALTA/NSPS LAND TITLE SURVEY
 FOR
 PULTE
 AND
 FIRST AMERICAN TITLE INSURANCE COMPANY

BARROW COUNTY
 GEORGIA

SHEET 3 OF 8

DRAWN BY: MS
 CHECKED BY: MCS
 FILE NO.: 25007.00
 DATE: 06/10/2025
 SCALE: 1" = 100'
 DATE OF FIELD WORK: 05/2025

This drawing is the property of Planners and Engineers Collaborative and is not to be copied, reproduced, or used in whole or in part without the written consent of Planners and Engineers Collaborative. It is not to be used on any other project and it is to be returned upon request.