

2100 Fleur Dr Des Moines Iowa

FOR SALE
36,673 SF

2100 FLEUR DR | DES MOINES, IA



CBRE

Property Overview

- Professional Office Space
- Great views of Grays Lake and Water Works Park.
- Abundant Surface Lot Parking
- Range of private offices, large and small conference rooms, training room, breakroom, outdoor patio amongst other onsite improvements
- Easy access to the Des Moines International Airport off Fleur and I - 235 through MLK Expressway
- New intersection directly onto Fleur (currently under construction)
- Single vehicle garage/storage



Sale Price

Main Bldg- \$2,900,000
Annex Bldg - \$900,000



Building SF

Main Bldg - 29,289 SF
Annex Bldg - 7,384 SF



Land

109,099 SF



Zoning

Commercial (EX/EX Mixed
Use District)



Year Built

1987
Remodeled 2004



Construction

Reinforced Concrete



Interior



Exterior

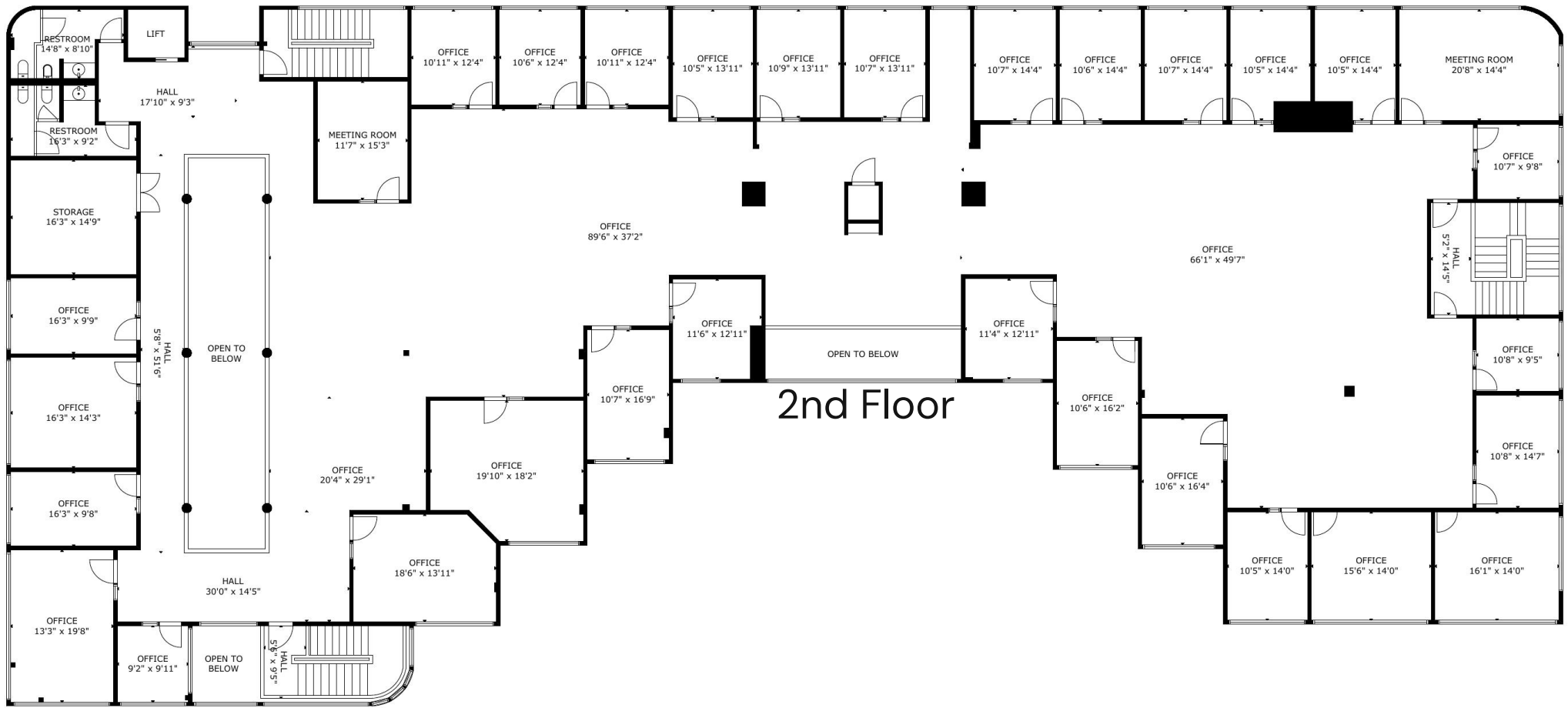


Floor Plan

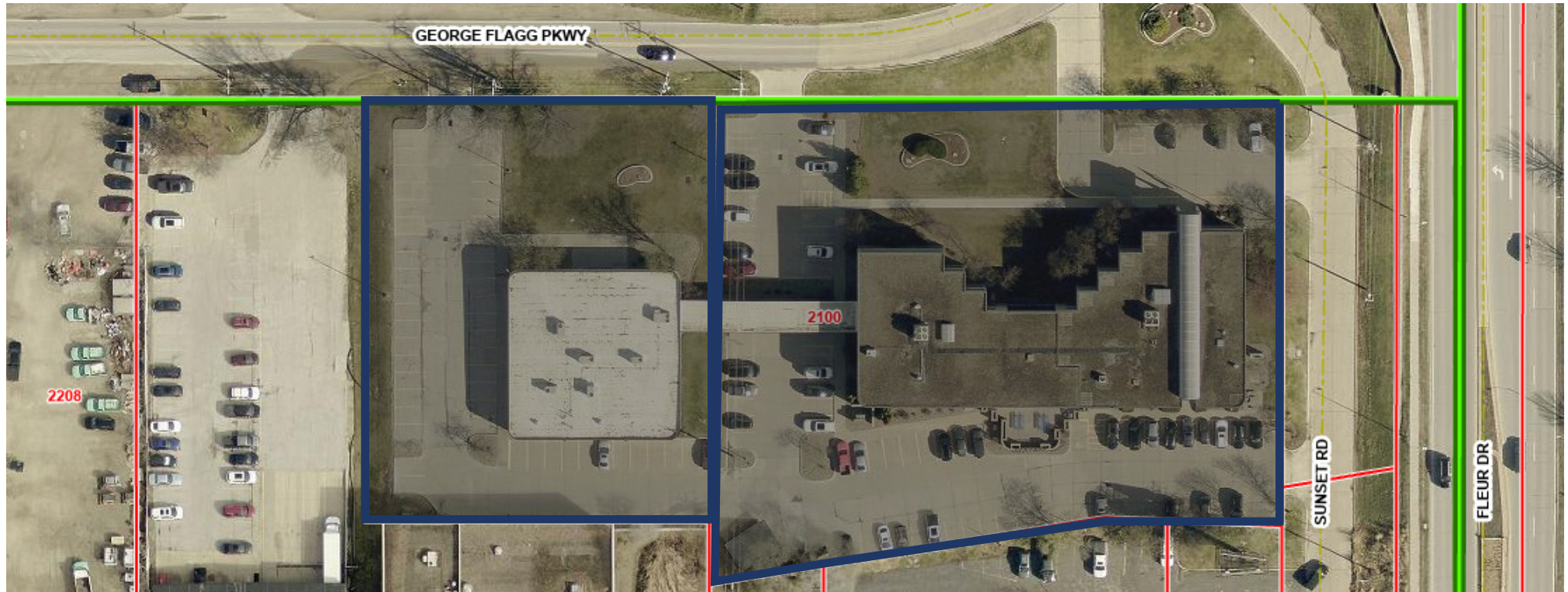


1st Floor

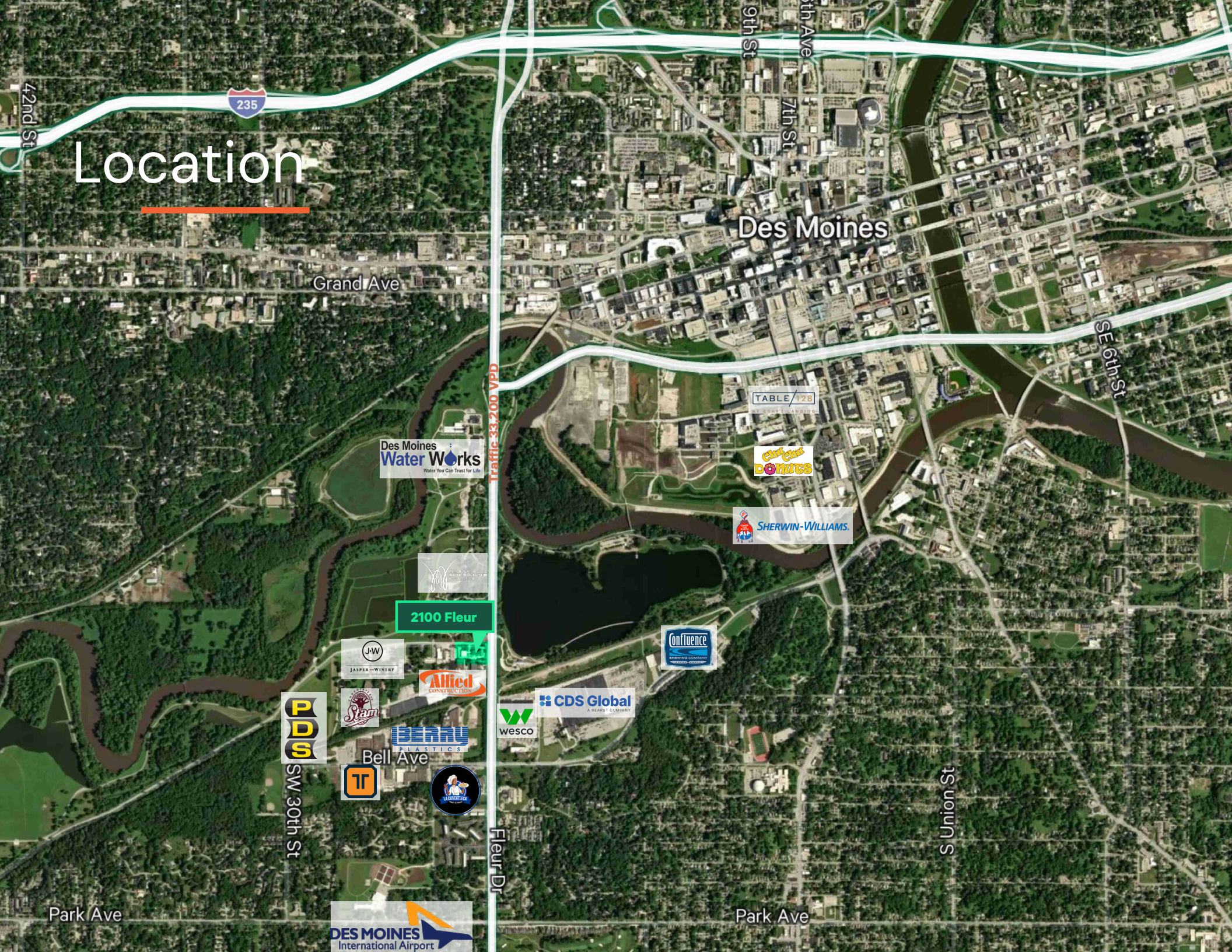
Floor Plan



Proposed New Parcel



Location



235

Des Moines

Grand Ave

SE 6th St

TABLE 128

Des Moines Water Works
Water You Can Trust for Life

CRISP DONUTS

SHERWIN-WILLIAMS

2100 Fleur

Confidence

JW
JASPER-WINERY

Allied CONSTRUCTION

CDS Global
A HERBST COMPANY

DDG

Jam

BERRY PLASTICS

wesco

TR

Bell Ave

LABORERS

SW 30th St

Fleur Dr

S Union St

Park Ave

Park Ave

DES MOINES International Airport

FOR LEASE | 29,289 SF

2100 Fleur Dr Des Moines, IA

Thomas Jacobs, CCIM

First Vice President

+1 515 418 8776

thomas.jacobs@cbre.com

Licensed in the State of Iowa

Harrison Kruse, SIOR, CCIM

First Vice President

+1 515 556 9168

harrison.kruse@cbre.com

Licensed in the State of Iowa

