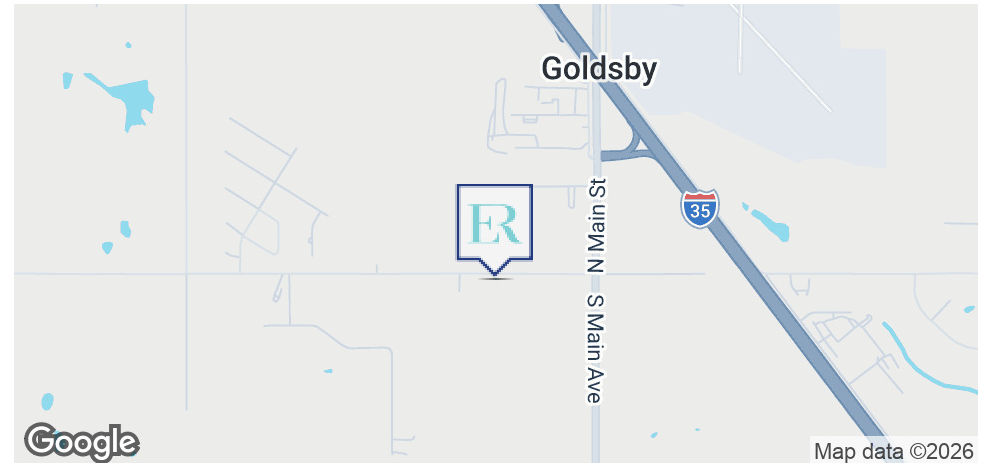


# 315 W. CENTER RD @ S. MAIN ST.

GOLDSBY, OK 73093



## OFFERING SUMMARY

Sale Price:	\$8,000,000
Lot Size:	72.78 Acres
Zoning:	C-1
Market:	Oklahoma City
Submarket:	Norman, OK
Price / SF:	\$2.52

## PROPERTY OVERVIEW

This offering features a 72.78-acre commercial development site located in Goldsby, Oklahoma. It sits in a business corridor with flexible opportunities for a variety of commercial uses. The town is experiencing rapid population growth and represents one of the higher-income communities in the southern Oklahoma City metro area, which supports long-term commercial and residential development.

## PROPERTY HIGHLIGHTS

- Flexible development opportunity west of I-35 in the heart of Goldsby,
- 72.78 acres
- Goldsby: Rapid Population Growth and average household income:  $\approx$  \$110,500 / year
- Close by: Libby's Cafe, Sonic, Marcum's Nursery, Norman Regional Urgent Care, Goldsby Flooring & Design, The First National Bank & Trust Co, Horinex Auto Body and more.

## GAYLA ARTMAN

Broker Associate

Equity Commercial Realty Advisors, LLC (405) 826-7975 cell  
gartman@equityrealty.net (405) 640-6167 office

# 315 W. CENTER ROAD @ S. MAIN STREET

315 W. CENTER ROAD @ S. MAIN STREET, GOLDSBY, OK 73093



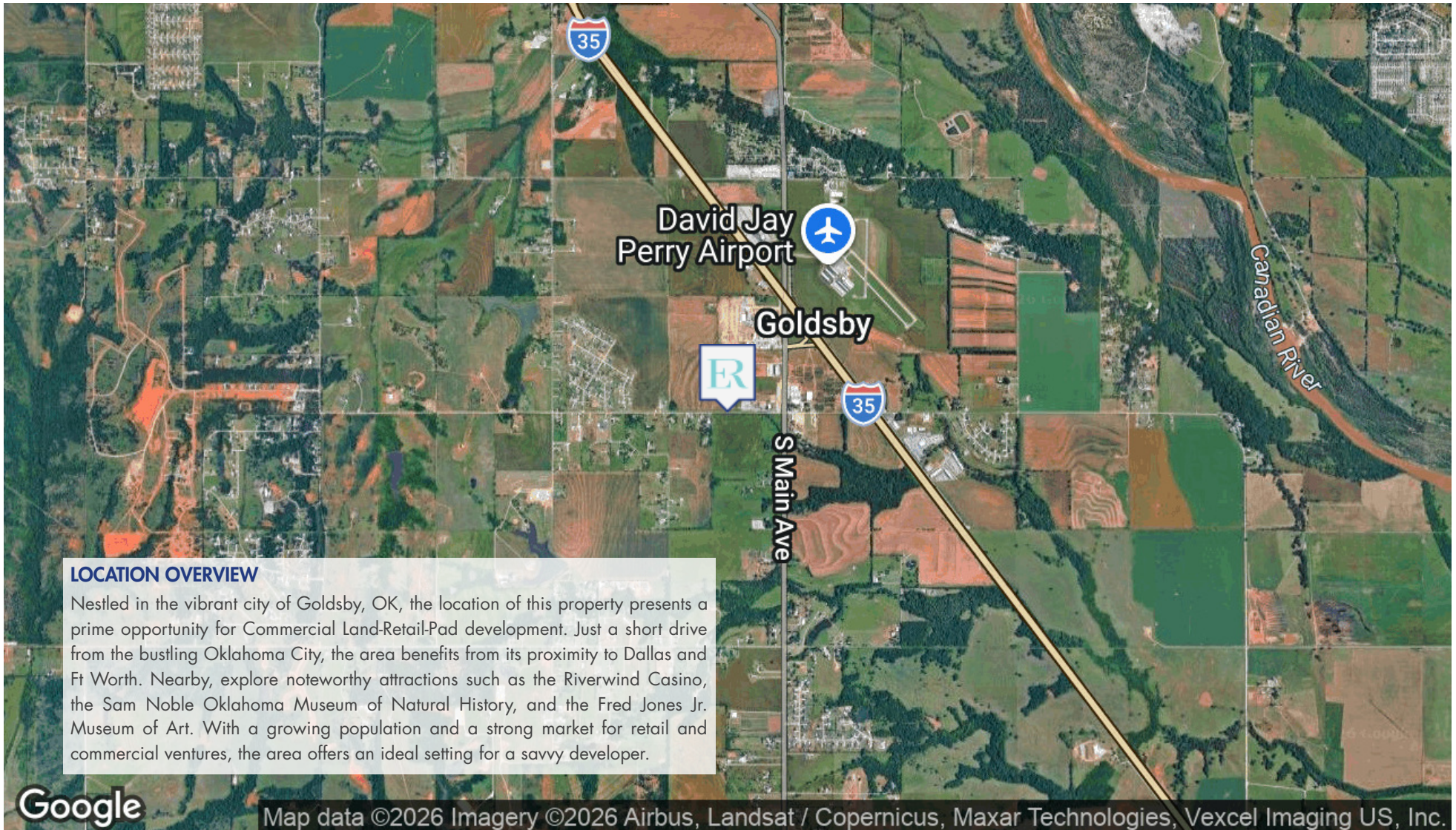
## GAYLA ARTMAN

Broker Associate

Equity Commercial Realty Advisors, LLC (405) 826-7975 cell  
gartman@equityrealty.net (405) 640-6167 office

# 315 W. CENTER ROAD @ S. MAIN STREET)

GOLDSBY, OK 73093



**GAYLA ARTMAN**

Broker Associate

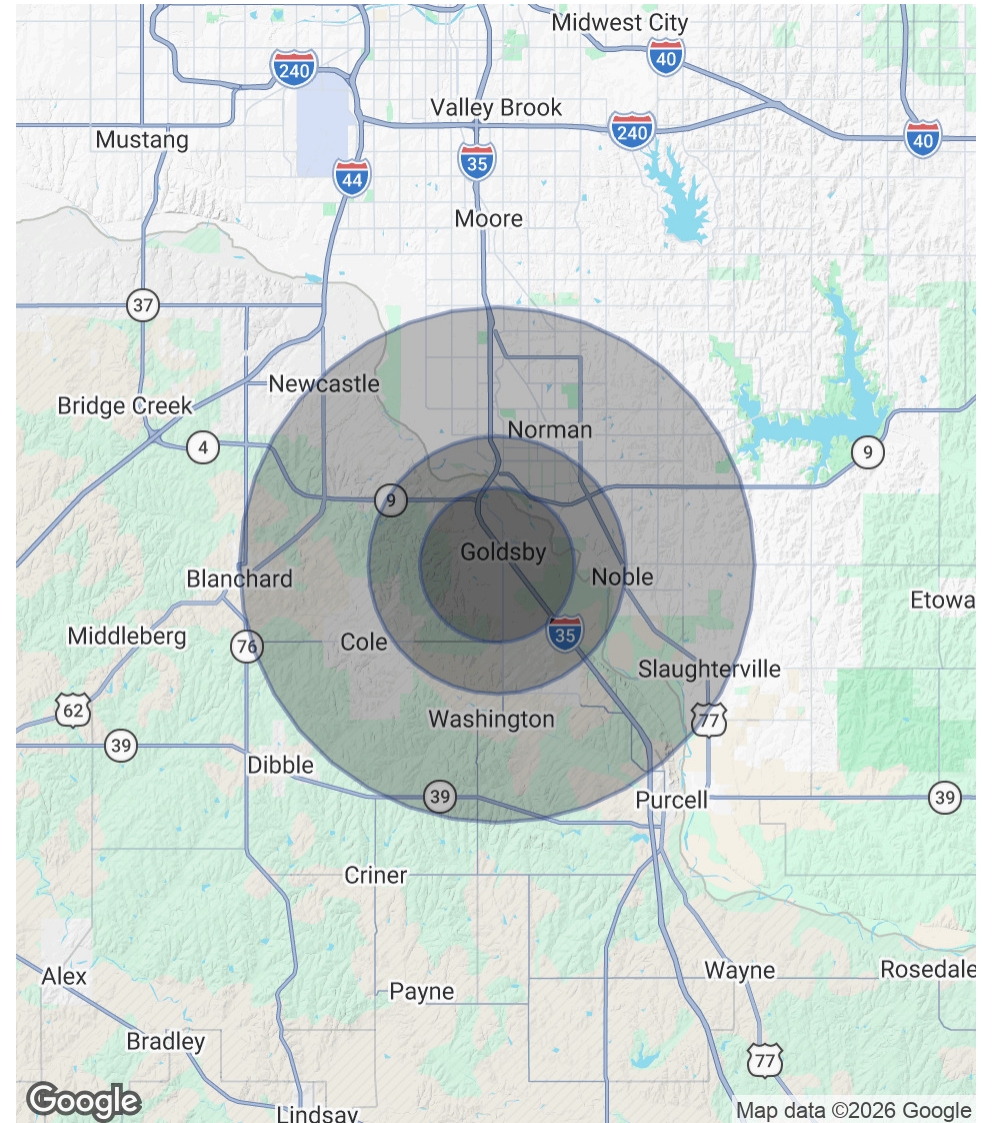
Equity Commercial Realty Advisors, LLC (405) 826-7975 cell  
gartman@equityrealty.net (405) 640-6167 office

# 315 W. CENTER ROAD @ S. MAIN STREET

GOLDSBY, OK 73093

	3 MILES	5 MILES	10 MILES
<b>POPULATION</b>			
Total Population	4,844	47,222	149,673
Average Age	43.0	30.7	35.4
Average Age (Male)	37.6	30.0	34.8
Average Age (Female)	43.9	32.3	36.2
<b>HOUSEHOLDS &amp; INCOME</b>			
Total Households	2,122	17,369	59,492
# of Persons per HH	2.3	2.7	2.5
Average HH Income	\$105,313	\$86,133	\$93,009
Average House Value	\$351,500	\$284,527	\$271,384

2023 American Community Survey (ACS)



**GAYLA ARTMAN**

Broker Associate  
Equity Commercial Realty Advisors, LLC (405) 826-7975 cell  
gartman@equityrealty.net (405) 640-6167 office