



1750 N 50th St

1750 N 50th St, Tampa, FL 33619



Jaime Goujon

Hill Valley Properties

1211 Tech Blvd, Suite 109, Tampa, FL 33619

info@hillvalleycommercial.com

(813) 488-5520



1750 N 50th St

\$22.71 /SF/YR

The property at 1750 N 50th Street consists of a 6,828-square-foot building situated on a 0.79-acre site in East Tampa. Originally designed and utilized for medical office purposes, the structure can support multiple uses under its IG zoning classification. The site includes 37 off-street parking spaces and features frontage along N 50th Street, providing both visibility and access for retail and office tenants. Nearby uses include financial institutions, quick service restaurants.

- Highly visible location with prominent signage and traffic counts exceeding 36,500 VPD.
- Configurable building footprint: full 6,828 SF or divisible into 4,308 SF and 2,520 SF suites.
- IG zoning supports a variety of uses, including medical, office, retail, and restaurant.
- Recently vacated medical office build-out, reducing retrofit time for healthcare operators.
- .79-acre parcel with 37 dedicated parking spots for customer and employee convenience.
- Proximity to downtown Tampa, I-4, and Selmon Expressway for regional accessibility.



Rental Rate: \$22.71 /SF/YR

Property Type: Retail

Property Subtype: Day Care Center

Gross Leasable Area: 6,828 SF

Year Built: 1981

Walk Score ®: 30 (Somewhat friendly)

Transit Score ®: 30 (Somewhat friendly)

Rental Rate Mo: \$1.89 /SF/MO

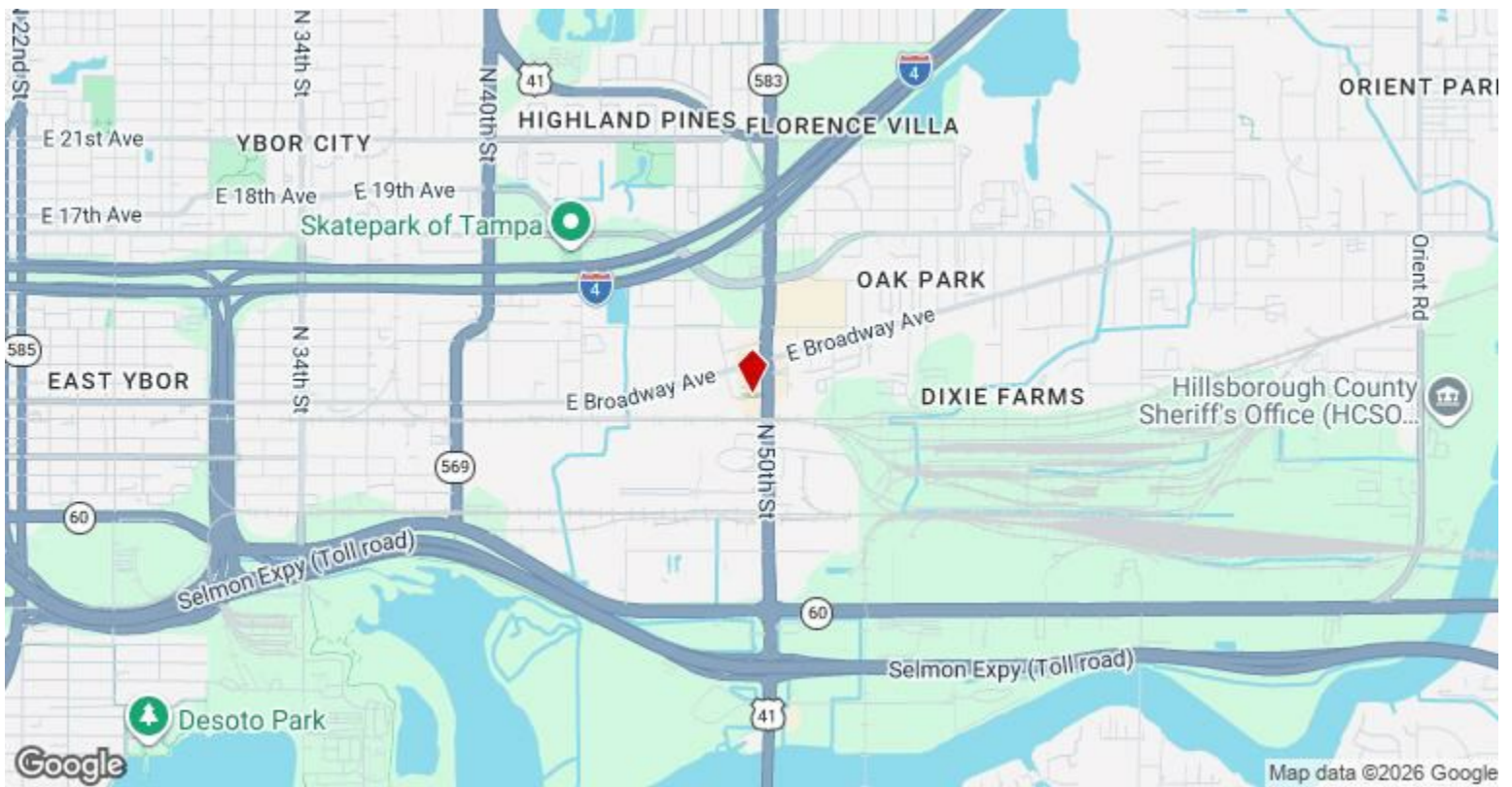
1st Floor Ste B

1

Space Available	2,345 SF
Rental Rate	\$22.71 /SF/YR
Date Available	Now
Service Type	Modified Gross
Built Out As	Standard Retail
Space Type	Sublet
Space Use	Retail

Major Tenant Information

Tenant	SF Occupied	Lease Expired
Learning Tree PPEC	-	September 2029



1750 N 50th St, Tampa, FL 33619

The property at 1750 N 50th Street consists of a 6,828-square-foot building situated on a 0.79-acre site in East Tampa. Originally designed and utilized for medical office purposes, the structure can support multiple uses under its IG zoning classification. The site includes 37 off-street parking spaces and features frontage along N 50th Street, providing both visibility and access for retail and office tenants. Nearby uses include financial institutions, quick service restaurants, and local retail, with regional connectivity provided by major transport routes.

Property Photos



PSS54398

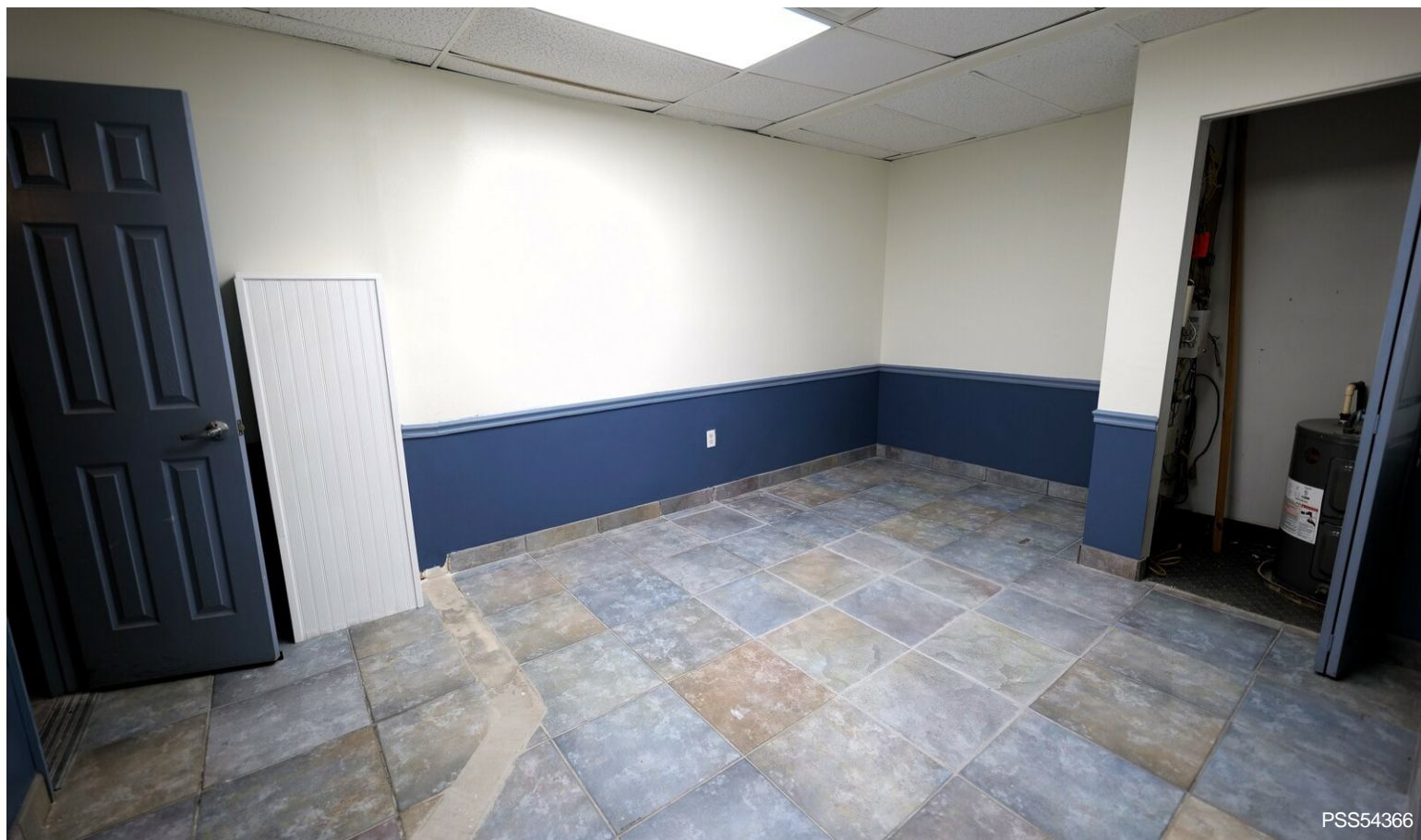


PSS54355

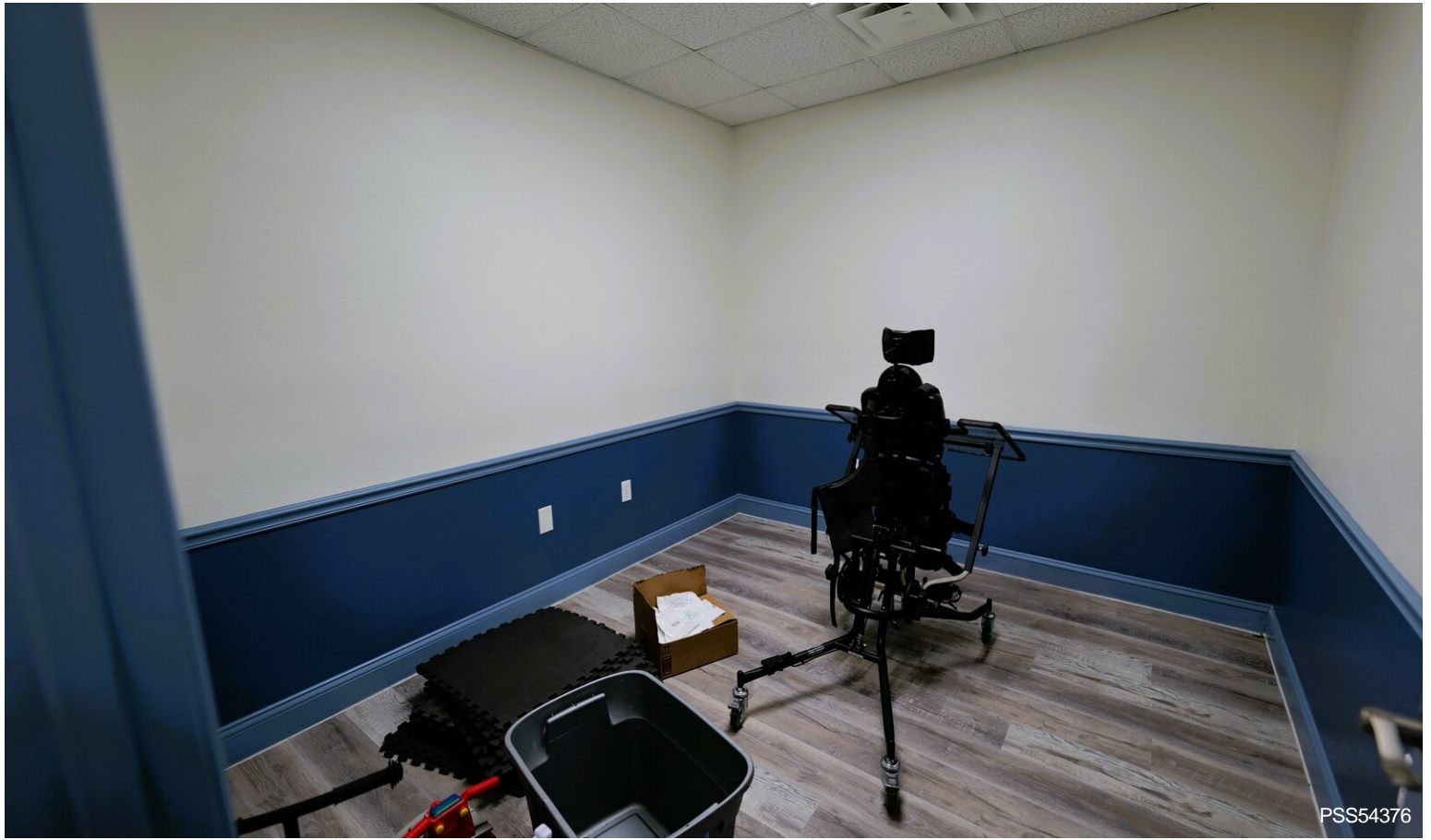
Property Photos



Property Photos



Property Photos



Property Photos



PSS54387

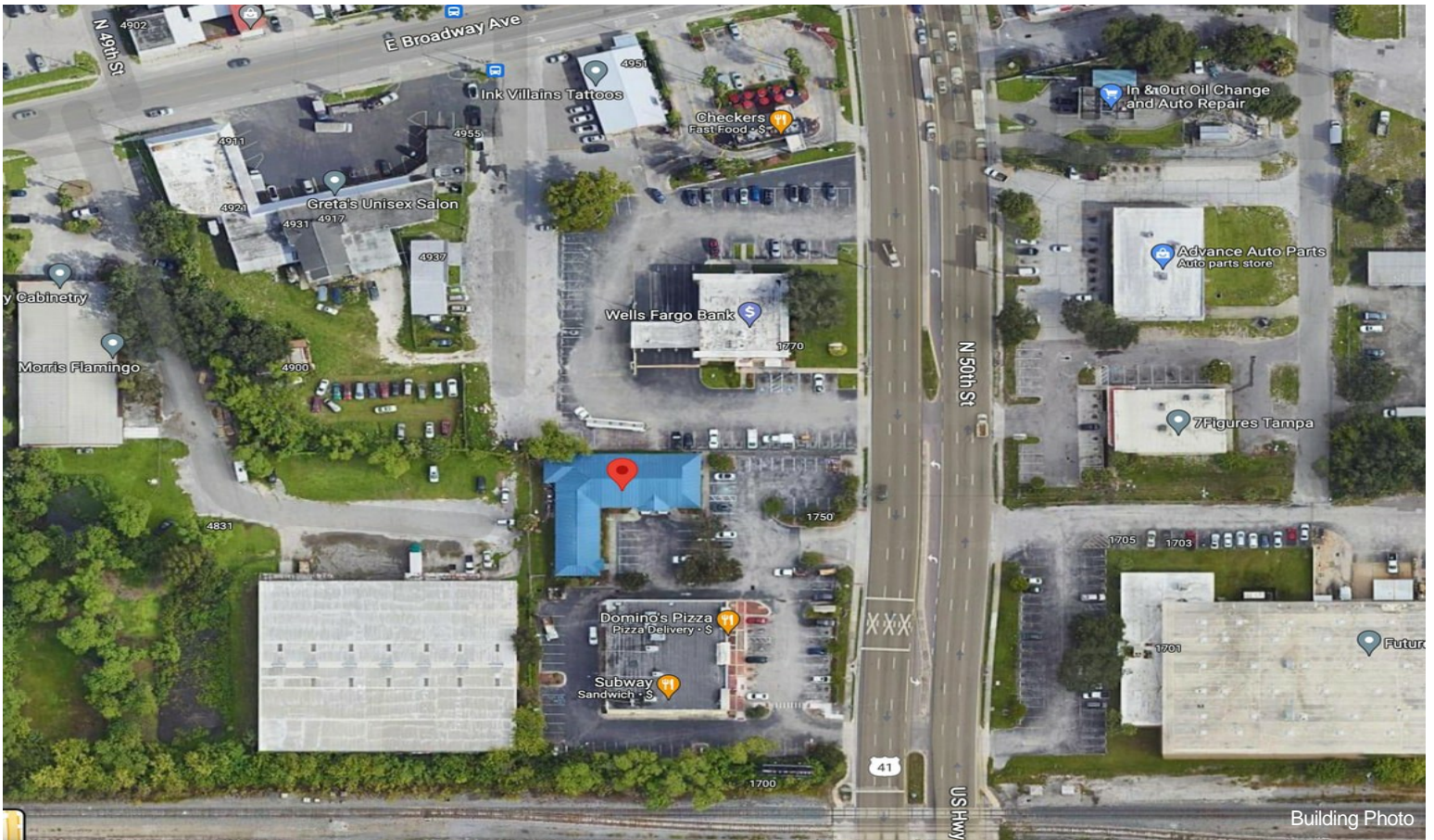


PSS54394

Property Photos



Building Photo



Building Photo

Property Photos

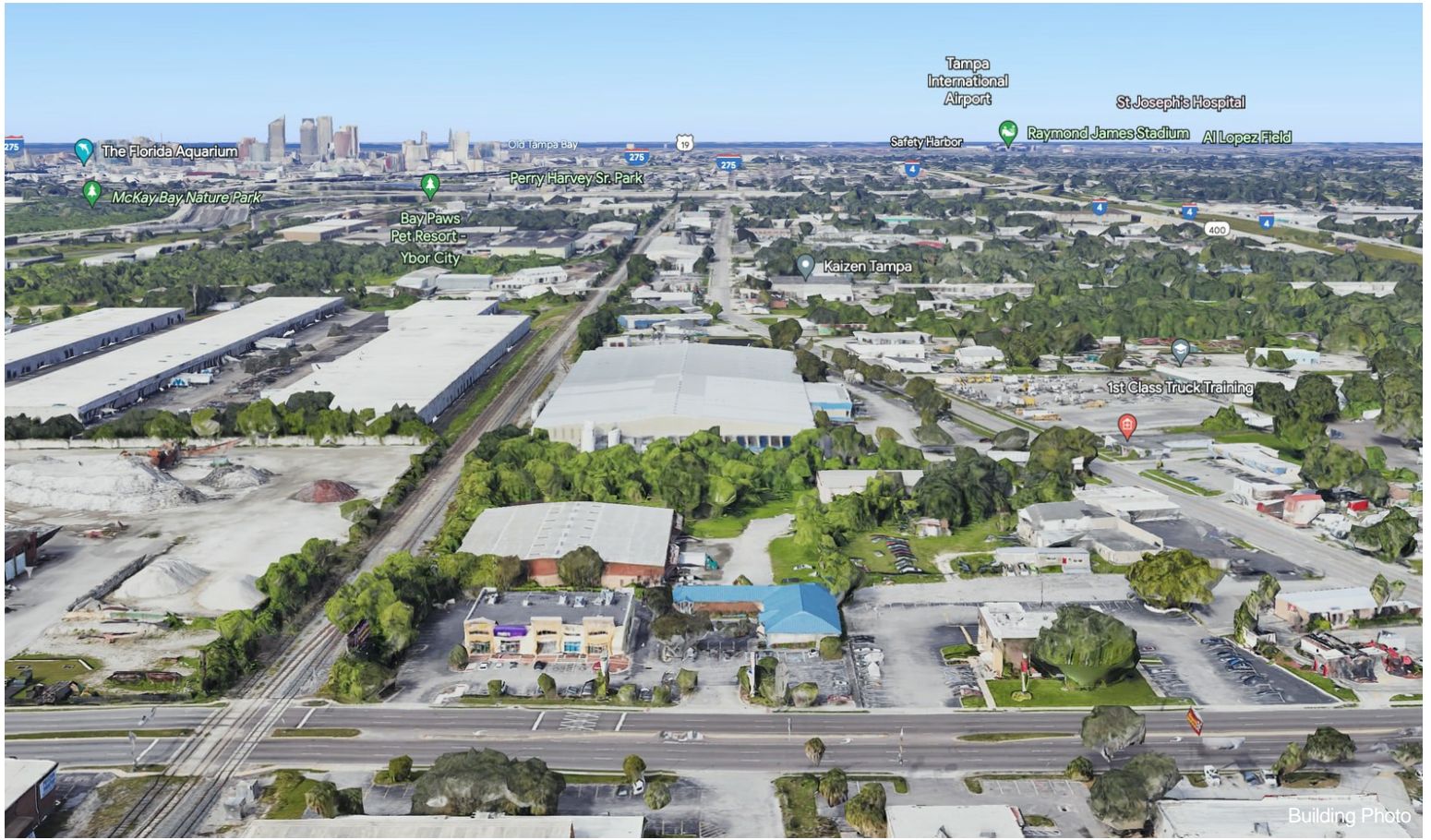


Building Photo



Building Photo

Property Photos



Building Photo



Building Photo

Property Photos

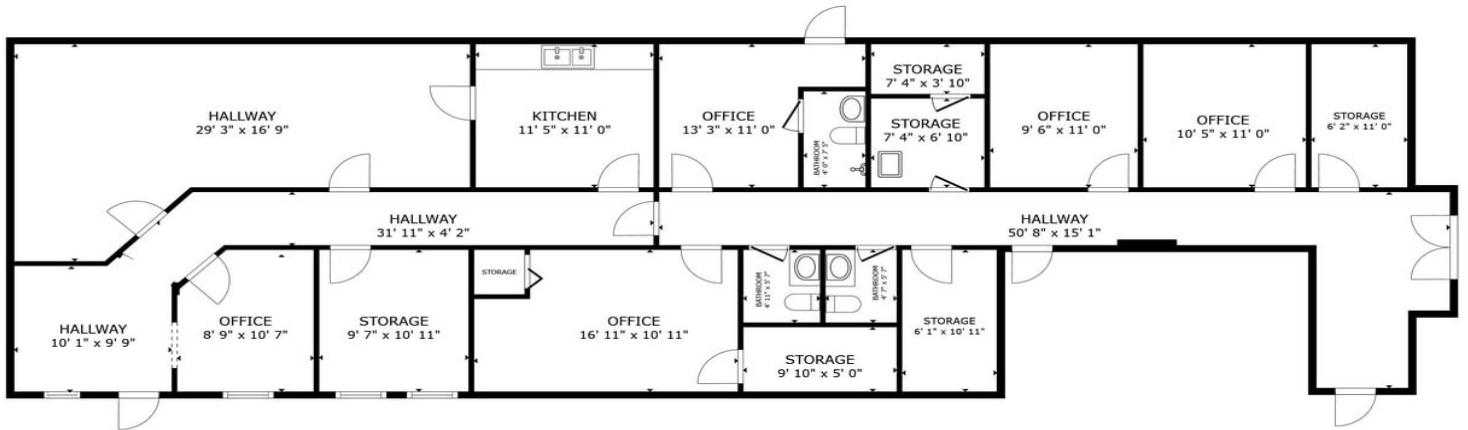


Building Photo



Building Photo

Property Photos



FLOOR PLAN