



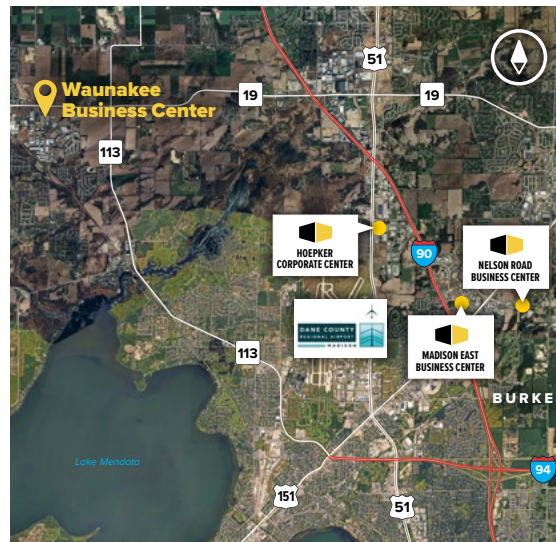
Waunakee Business Center

Moravian Valley Road at Frank H Street
Waunakee, WI 53597



About the Property

Waunakee Business Center consists of four buildings totaling more than 156,000 square feet, located 10 minutes north of the City of Madison, in Dane County. The business center is located one-mile west of the Highway 19 and Highway 113 intersection, just 10 minutes from Dane County Airport. Fine dining and fast food restaurants, shopping and lodging are all within walking distance. The project offers a affordable and flexible floor plans to meet a variety of office, warehouse, R&D, light manufacturing, or showroom requirements.



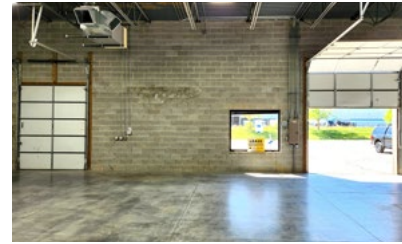
Flex/R&D/Office Buildings

201 Moravian Valley Road	37,730 SF
202 Moravian alley Road	39,000 SF
204 Moravian Valley Road	39,000 SF
1100 Frank H Street	40,733 SF

Building Specifications

Ceiling Height	16 ft. clear minimum
Parking	
201 Moravian Valley Rd	4 spaces/1,000 SF
202-204 Moravian Valley Rd	220 spaces
1100 Frank H Street	89 spaces
Loading	Dock or drive-in
Zoning	Light Industrial

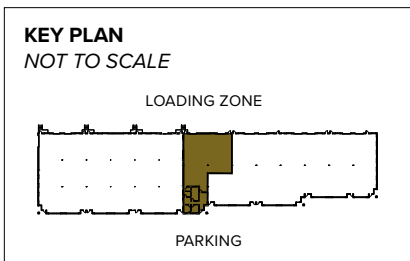
For more information on Waunakee Business Center, visit: sjpi.com/waunakee



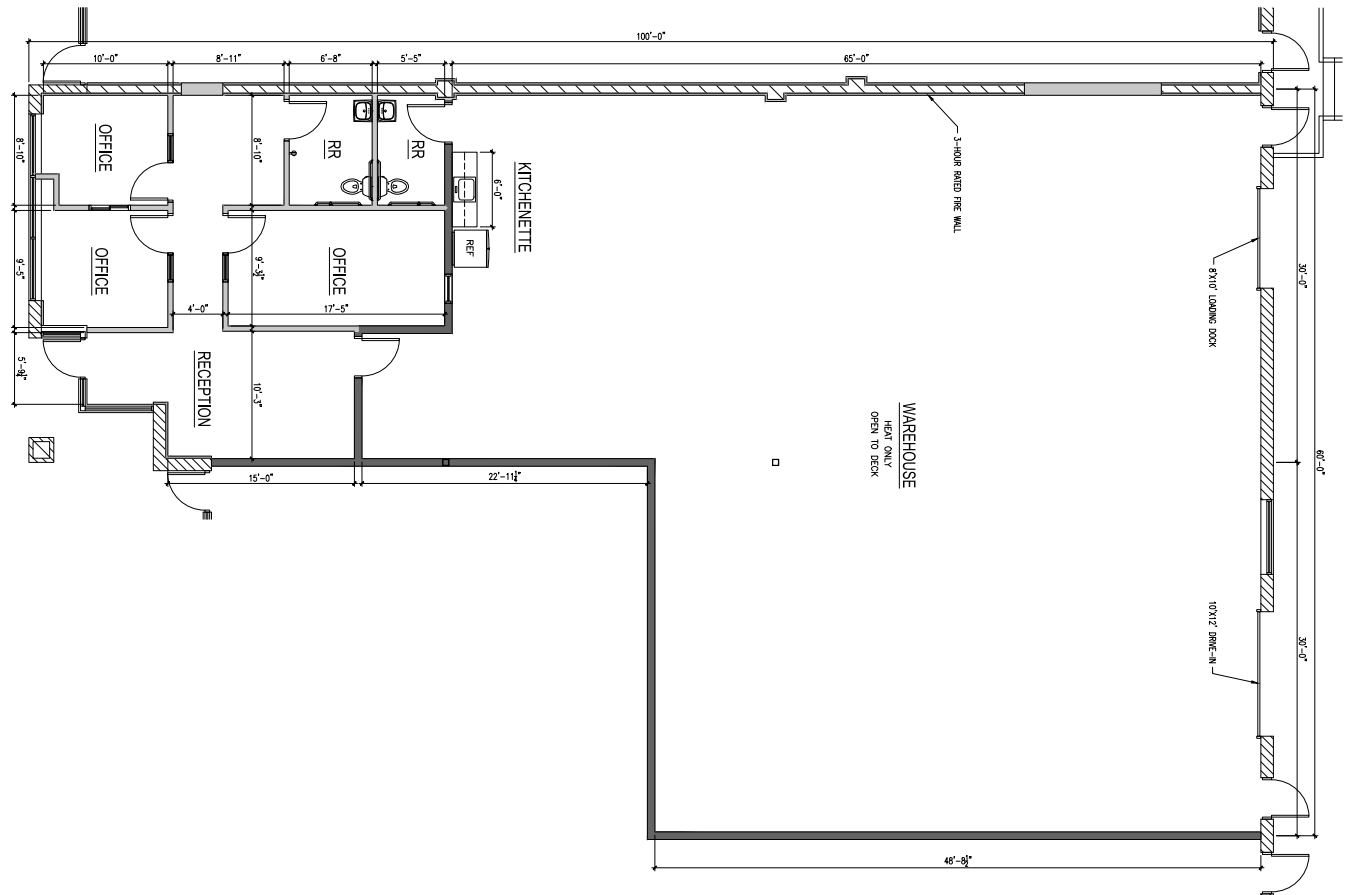
Total SF Available:
4,500 SF

934 sq. ft. office, 3,566 sq. ft. warehouse with private offices (3), reception area, 8'x10' dock door (1), and 10'x12' drive-in door

CLICK TO VIEW VIRTUAL TOUR



Note: This space plan is subject to existing field conditions. This drawing is proprietary and the exclusive property of St. John Properties, Inc. Any duplications, distribution, or other unauthorized use is strictly prohibited.



Availabilities

Space Available at Waunakee Business Center

3,923 sq. ft.	202 Moravian Valley Road	Ste. F	396 sq. ft. office, 3,527 sq. ft. warehouse with private office (1), break area, production/warehouse area, 8'x10' dock door (1)
4,500 sq. ft.	202 Moravian Valley Road	Ste. G-H(rear)	934 sq. ft. office, 3,566 sq. ft. warehouse with private offices (3), reception area, 8'x10' dock door (1), and 10'x12' drive-in door

Contact Us

Gregory Fax

Regional Partner, Wisconsin

GFax@sjpi.com | 262.524.0100

Wisconsin Regional Office:

2000 Pewaukee Road | Suite A

Waukesha, WI 53188



262.524.0100 | SJPI.COM/WISCONSIN