

3161 SE 22nd Street

Des Moines, Iowa 50320
www.cbre.com/des-moines



Available for sale is this 2-story, 1,872 SF office building located at the NE corner of SE 22nd Street and East Park Avenue. Built in 1982, the property was remodeled in 2013 with new windows, siding, and quality interior remodel. Other property features include a 1,224 SF partially finished basement ideal for storage, patio/deck, and a 24' x 24' detached garage/storage shed. This is a unique opportunity to own an office building in SE Des Moines where there is little office inventory.

Available Space

- + 1,872 SF Office Building
- + 1,224 SF Partially finished basement
- + 24' x 24' Detached garage/storage shed
- + Existing furniture may be available
- + Rectangular-shaped corner lot of 29,245 SF (0.671 acres) in size

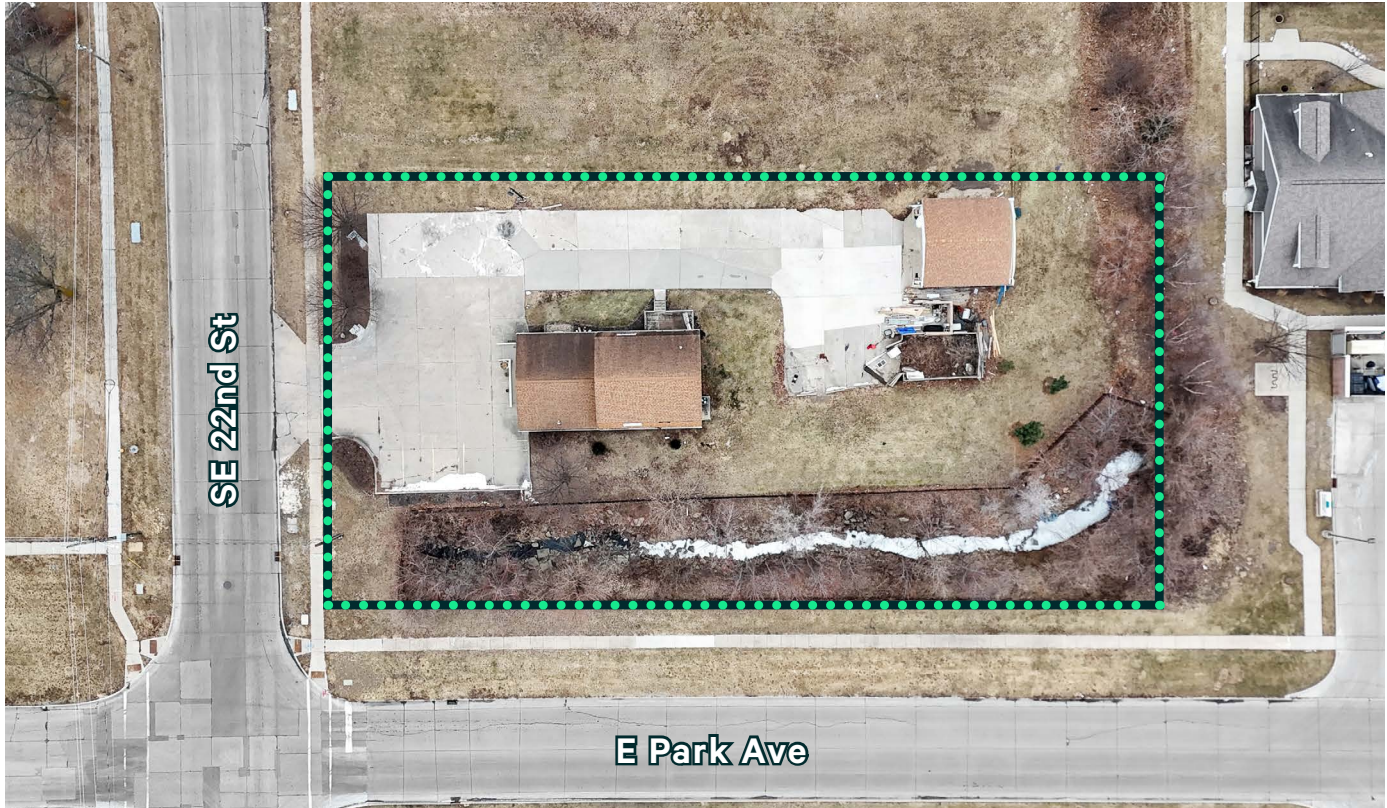
Sale Price

+ \$295,000

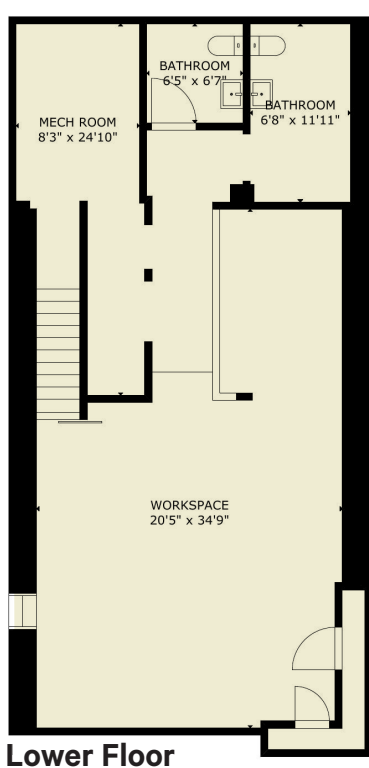
Property Features

- + Zoning: RX1
- + New furnace/air conditioning/water heater in 2025
- + Real Estate Taxes: \$7,772 per year
- + Property sits adjacent to Edencrest at Riverwoods Senior Housing Complex, 1.0 miles east of SE 14th Street/Hy-Vee, 0.6 miles south of the James W. Cownie Baseball/Soccer Complex, and 1.5 miles from the new Athene North Shore Recreation Area at Easter Lake.
- + Located caddy-corner from Evergreen Park and Recreation Courts

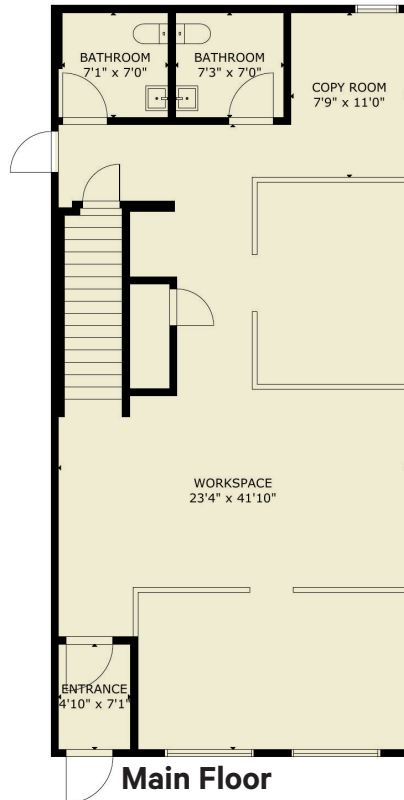
Site Plan



Floor Plan




Lower Floor



Main Floor



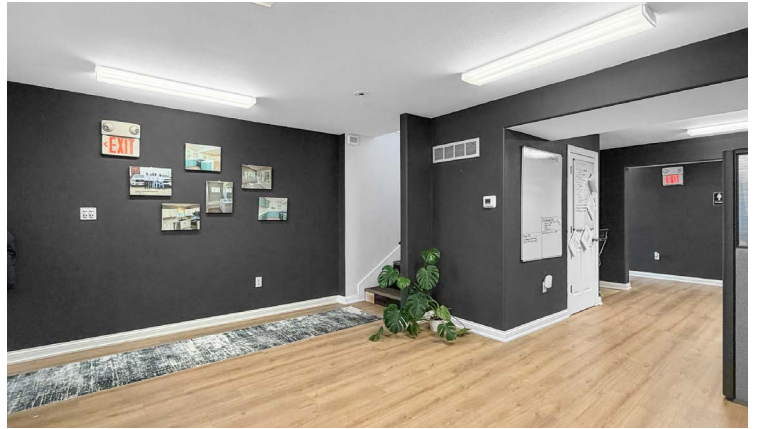
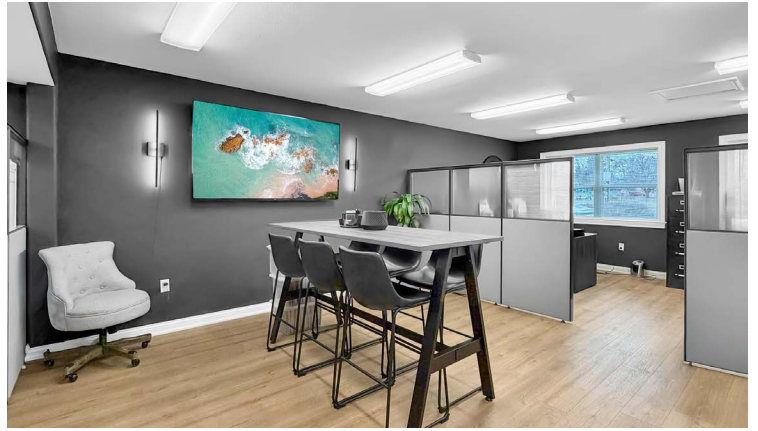
Upper Level 1

 [Click Here for Virtual Tour](#)

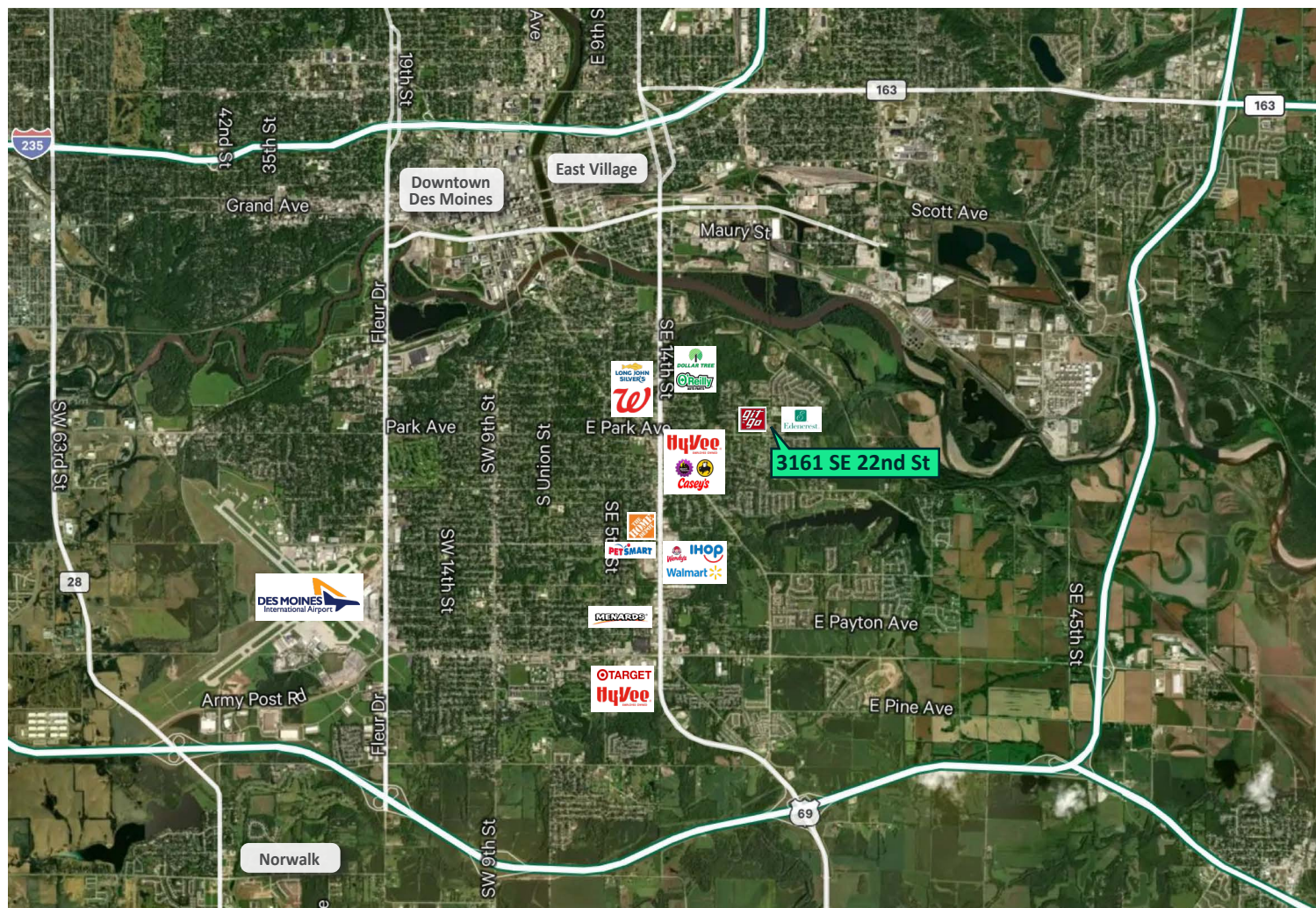
3161 SE 22nd Street
Des Moines | Iowa 50320

For Sale

Property Photos



Location



Contact Us

Bill Wright

Senior Vice President
+1 515 210 3050
bill.wright2@cbre.com
Licensed in the State of Iowa

Chris Pendroy, CCIM, SIOR

Senior Vice President
+1 515 402 6600
chris.pendroy@cbre.com
Licensed in the State of Iowa

Grant Wright, CCIM

Senior Vice President
+1 515 745 5113
grant.wright@cbre.com
Licensed in the State of Iowa

Dakota Little

Senior Associate
+1 515 745 4378
dakota.little@cbre.com
Licensed in the State of Iowa

© 2026 CBRE, Inc. All rights reserved. This information has been obtained from sources believed reliable, but has not been verified for accuracy or completeness. You should conduct a careful, independent investigation of the property and verify all information. Any reliance on this information is solely at your own risk. CBRE and the CBRE logo are service marks of CBRE, Inc. All other marks displayed on this document are the property of their respective owners, and the use of such logos does not imply any affiliation with or endorsement of CBRE. Photos herein are the property of their respective owners. Use of these images without the express written consent of the owner is prohibited.