

THE CAPRI MOTEL
2465 EL CAMINO REAL
SANTA CLARA

RARE 40 UNIT MOTEL FOR SALE ON A ±0.66 AC LOT

**REDEVELOPMENT OPPORTUNITY – ±0.66 AC LOT, MIXED USE GENERAL PLAN
CORNER OF EL CAMINO REAL & SAN TOMAS EXPY**



PROPERTY OVERVIEW



PRICE: \$5,200,000

YEAR BUILT: 1959

PROPERTY TYPE: Motel

GENERAL PLAN: Community Mixed Use (El Camino Real Specific Plan)

NUMBER OF UNITS: 40 (39 + 1 Managers Unit)

APN: 216-01-041

LOT SIZE: ±29,000 SF (±0.66 AC)

THE CAPRI MOTEL

RARE 40 UNIT MOTEL ON EL CAMINO REAL

- 100% Fee Simple Interest in a 40 Unit Motel Located at 2465 El Camino Real, Santa Clara.
- 40 Units (34 – 1 Bedroom Units, 5 – Two Bedroom Units, 1 – Managers Unit Which is a 2BD/1BTH with Kitchen)
- Rare Owner User Opportunity – The Property will be Delivered Vacant at the Close of Escrow.
- Located One Parcel Away from the Corner of El Camino Real and San Tomas Expressway.
- Large ±29,000 Square Foot Lot with Redevelopment Potential, in the Community Mixed Use General Plan Designation.
- The Community Mixed Use General Plan Designation is a combination of the Community Commercial and Medium Density Residential designations and is intended to encourage a mix of residential and commercial uses along major streets.
- High Barrier to Entry Market with Household Income in Excess of \$168,000 in a 1-Mile Radius from the Property.







8FT CLEARANCE

serenelife
∞











INTERIOR
PHOTOS





INTERIOR
PHOTOS





SAN TOMAS EXPY

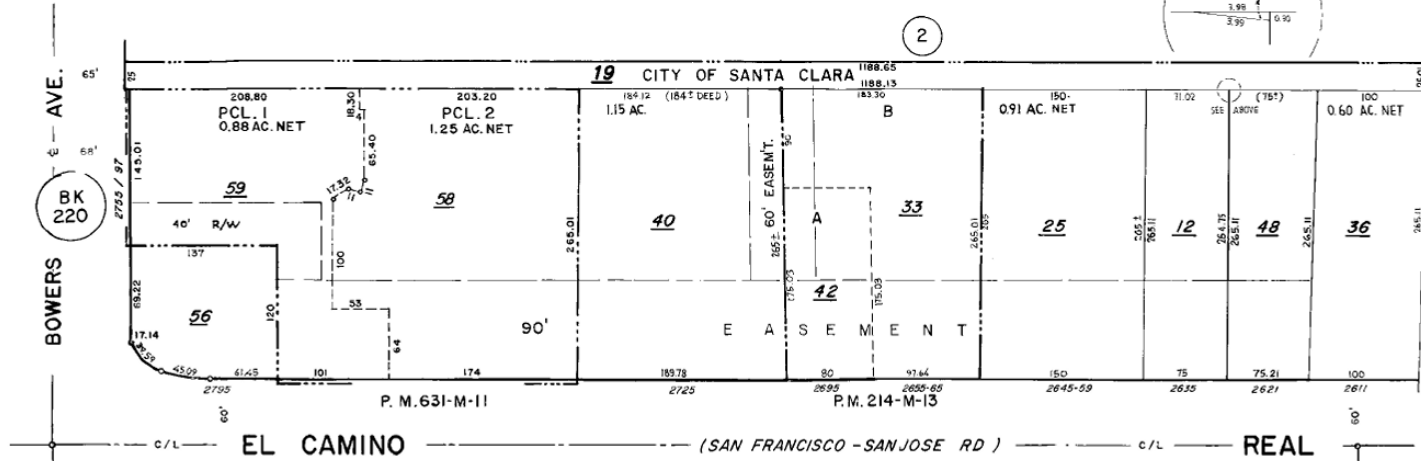
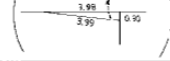


EL CAMINO REAL

PARCEL MAP

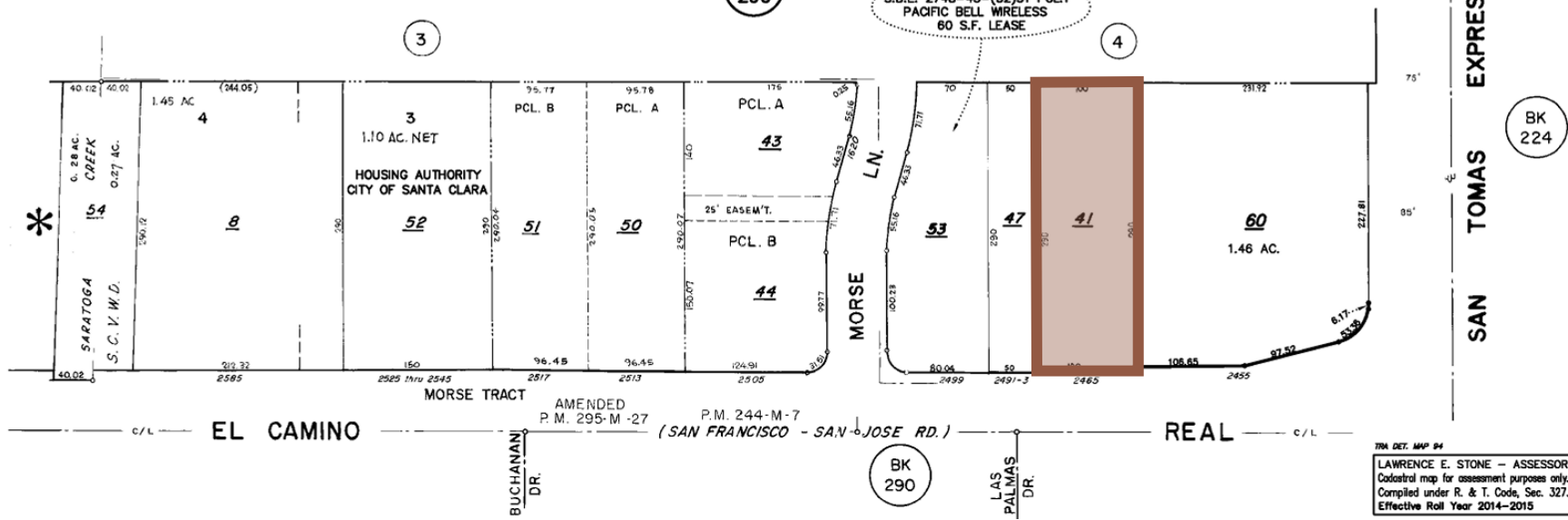
OFFICE OF COUNTY ASSESSOR — SANTA CLARA COUNTY, CALIFORNIA

BOOK 216 PAGE 1



BOOK 290

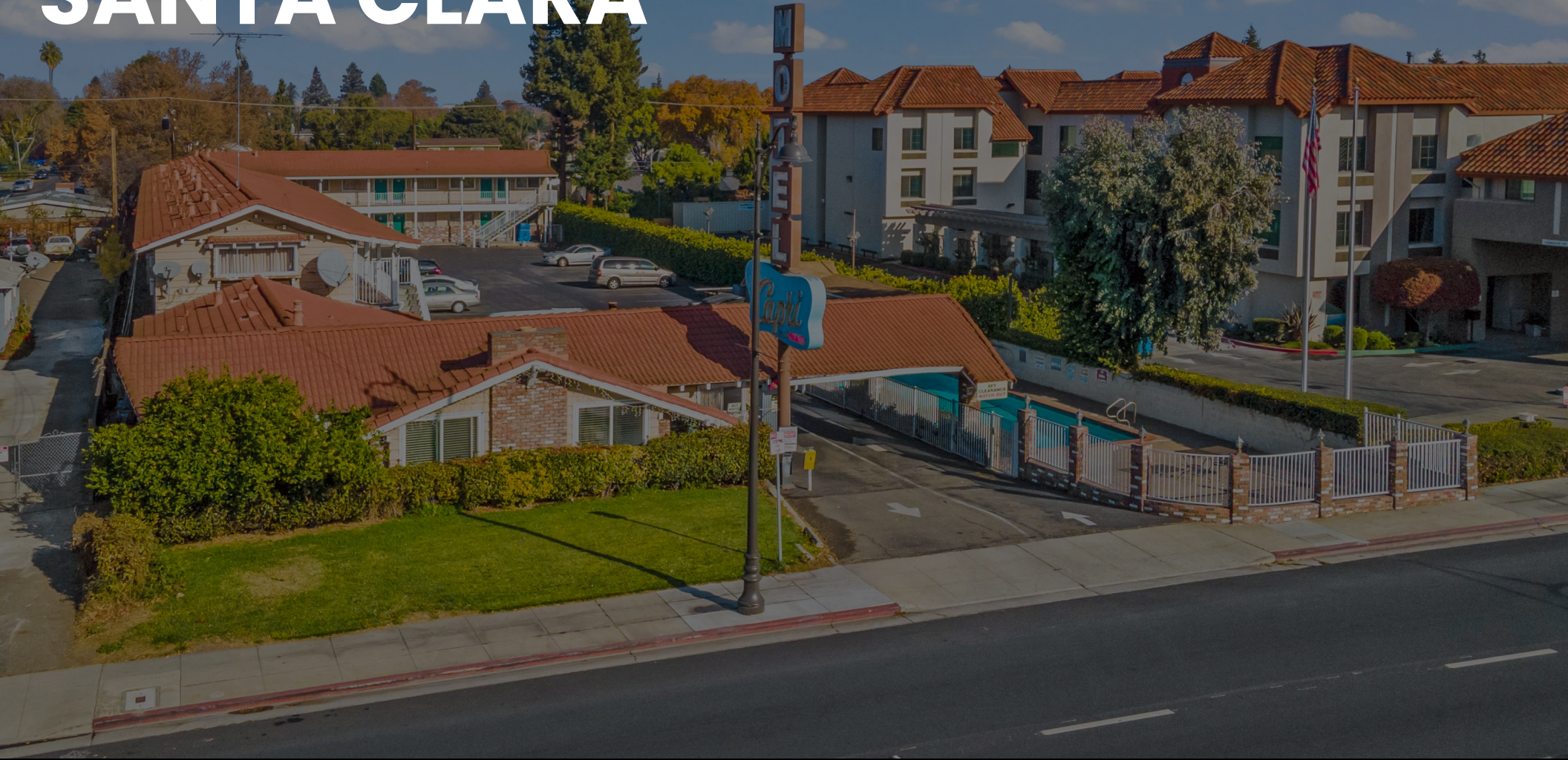
S.B.E. 2748-43-(32)31 PCL.1
PACIFIC BELL WIRELESS
60 S.F. LEASE



TRA DET. MAP 04
LAWRENCE E. STONE - ASSESSOR
Cadastral map for assessment purpose only.
Compiled under R. & T. Code, Sec. 327.
Effective Roll Year 2014-2015

This map/plat is being furnished as an aid in locating the herein described Land in relation to adjoining streets, natural boundaries and other land, and is not a survey of the land depicted. Except to the extent a policy of title insurance is expressly modified by endorsement, if any, the Company does not insure dimensions, distances, location of easements, acreage or other matters shown thereon.

2465 EL CAMINO REAL SANTA CLARA



David Taxin
Partner
Lic. #00983163
408.966.5919
dtaxin@moinc.net

Jeremy Awdisho
Vice President
Lic. #02064232
650.814.4510
jeremy@moinc.net

