

ALL PROPERTIES ARE OWNER MANAGED AND STRATEGICALLY LOCATED MINUTES FROM A MAJOR INTERSTATE IN THE EAST BAY AND CENTRAL VALLEY.

Right Space. Best Place.

www.cranbrookgroup.com

PORT PLAZA BUSINESS CENTER

[3950 - 3960 Industrial Boulevard, West Sacramento, CA 95691](#)

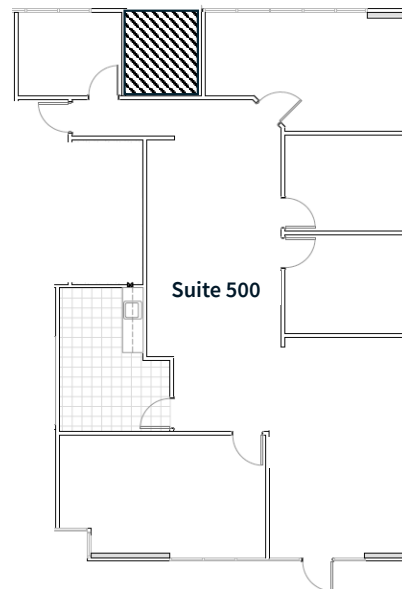
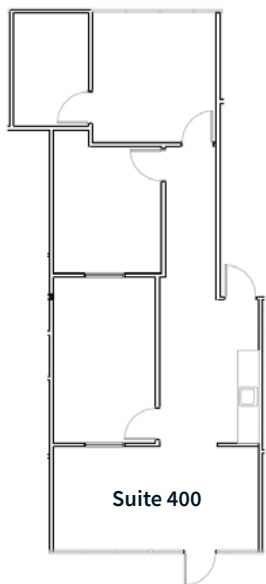


SEE & LEARN MORE ...

Go to cranbrookgroup.com to view more photos and get more information about Port Plaza Business Center and our company!

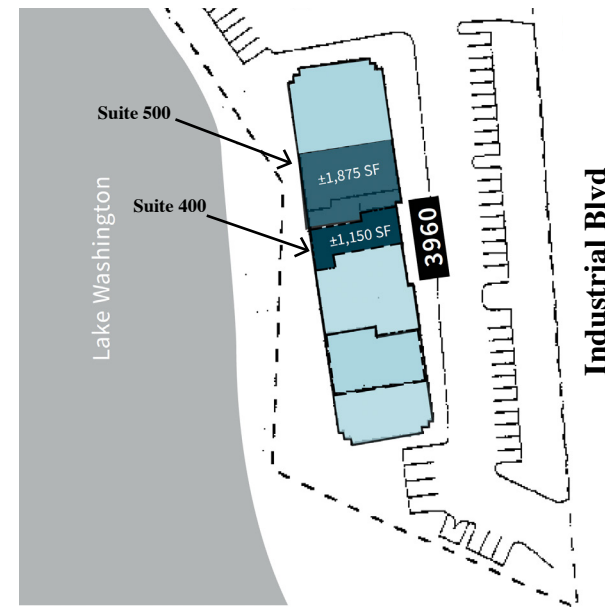
SUITE 3960-400 & 500

± 3,025 RENTABLE SQUARE FEET



FLOOR KEY PLAN

AVAILABLE SUITES IN BLUE BELOW



The information contained herein is based on reliable data, measurements and calculations. We have no reason to doubt its accuracy, but we do not guarantee it. All information should be verified prior to purchase or lease.

For more information, please contact:



Mike Luca
Senior Managing Director, JLL
C: (916) 214-0466
mike.luca@jll.com
DRE #01447904

Dominic Smith
Vice President, JLL
C: (916) 995-9396
dominic.smith@jll.com
DRE #02106714

RJ Jimnez
Senior Associate, JLL
C: (916) 440-1837
rj.jimenez@jll.com
DRE # 02248675



Chris Wight
Director of Leasing & Brokerage
O: (209) 549-4960 x 117 | C: (415) 350-1430
cwight@cranbrookgroup.com
DRE #00935049