



MAIN STREET

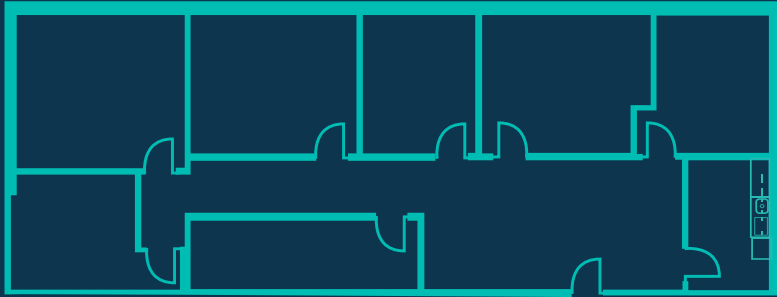
1122 LADY STREET
COLUMBIA, SC



EXPANSIVE[®]
workspace

TEAM SUITE 1200B

ACCOMODATES HEADCOUNT OF UP TO 61



1843 SQUARE FEET OF PRIVATE SPACE
PLUS 3000+SF OF SHARED WORKSPACE,
COWORKING LOUNGE, KITCHEN, PHONE
BOOTHS & MORE

SOLUTION INCLUDES:



FULLY
FURNISHED



DIRECT FIBER
INTERNET &
WIFI ACCESS



EXPANSIVE
LOUNGE



COFFEE &
TEA



24/7 ACCESS



ON-SITE
MGMT



HIGH SPEED
PRINTERS



UTILITIES



MOTHERS'
ROOM



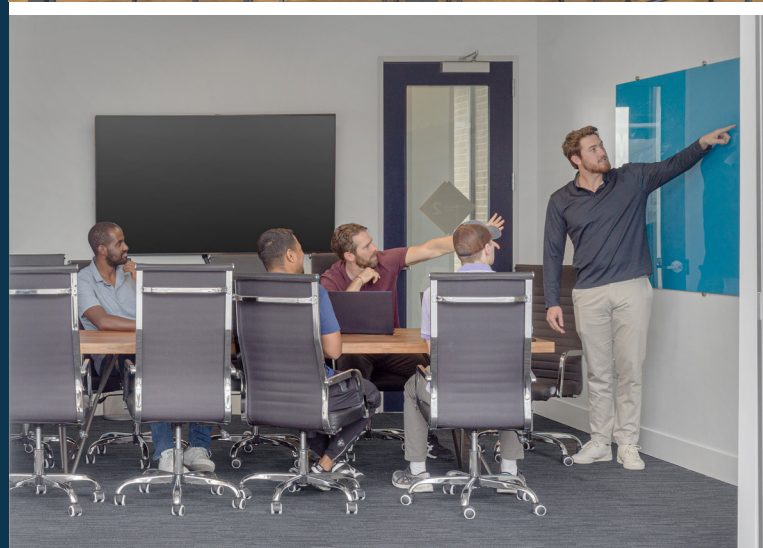
COMMUNITY
APP



BIKE ROOM



NETWORK
ACCESS



EXPLORE OUR AVAILABLE
TEAM SUITE OPTIONS TODAY!

CONTACT EXPANSIVE

877.301.6217 | sales@expansive.com