



up to 17,500 SF

For Lease

5665 Paré Street

Mount-Royal, QC H4P 1S1



Owned by



PANOPTIC
PROPERTIES

Industrial space for lease

- Easy access to highways 15, 40, 520, 20 and 13
- Minutes away from restaurants & shopping
- 15 minutes from the Champlain and Mercier bridges and 20 minutes away from the Montreal- Pierre-Elliott Trudeau International airport
- Available October 1st 2022
- Close to public transportation (Bus # 115 to Namur metro station)
- Dense population, large labor force

Contact

Antoine Dumas

Associate
Commercial Real Estate Broker
+1 514 917 7760
antoine.dumas@jll.com

Brandon Allen, SIOR

Executive Vice President
Certified Real Estate Broker
+1 514 406 6052
brandon.allen@jll.com

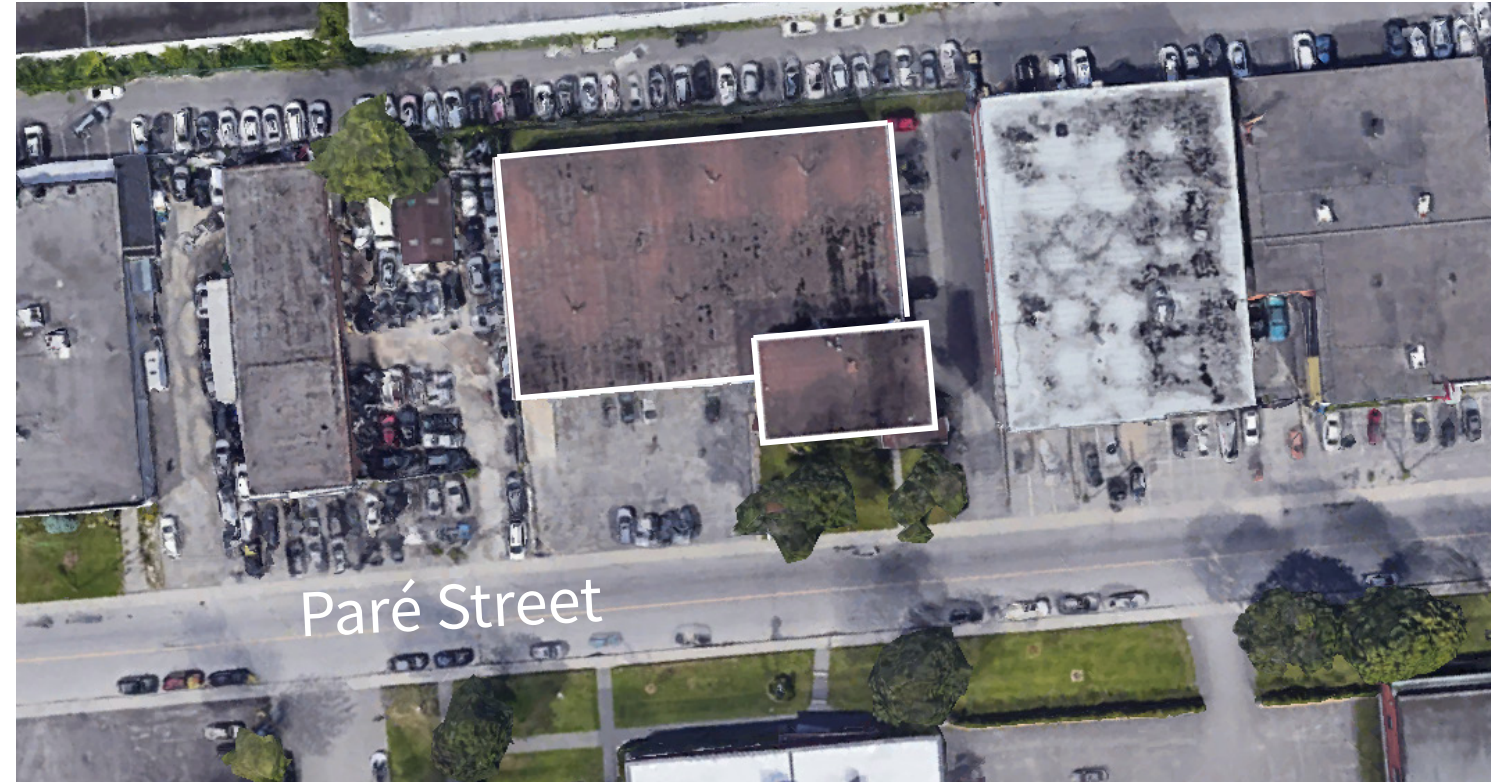


5665 Paré Street

For Lease

Mount-Royal, Quebec H4P 1S1

For Lease



Property Details

Option 1:



Total available area
15,000 SF
Industrial area
12,500 SF
Office area
2,500 SF

Option 2:



Total available area
17,500 SF
Industrial area
12,500 SF
Office area
5,000 SF



Occupancy
October 1st 2022



Clear height
16' (warehouse area)

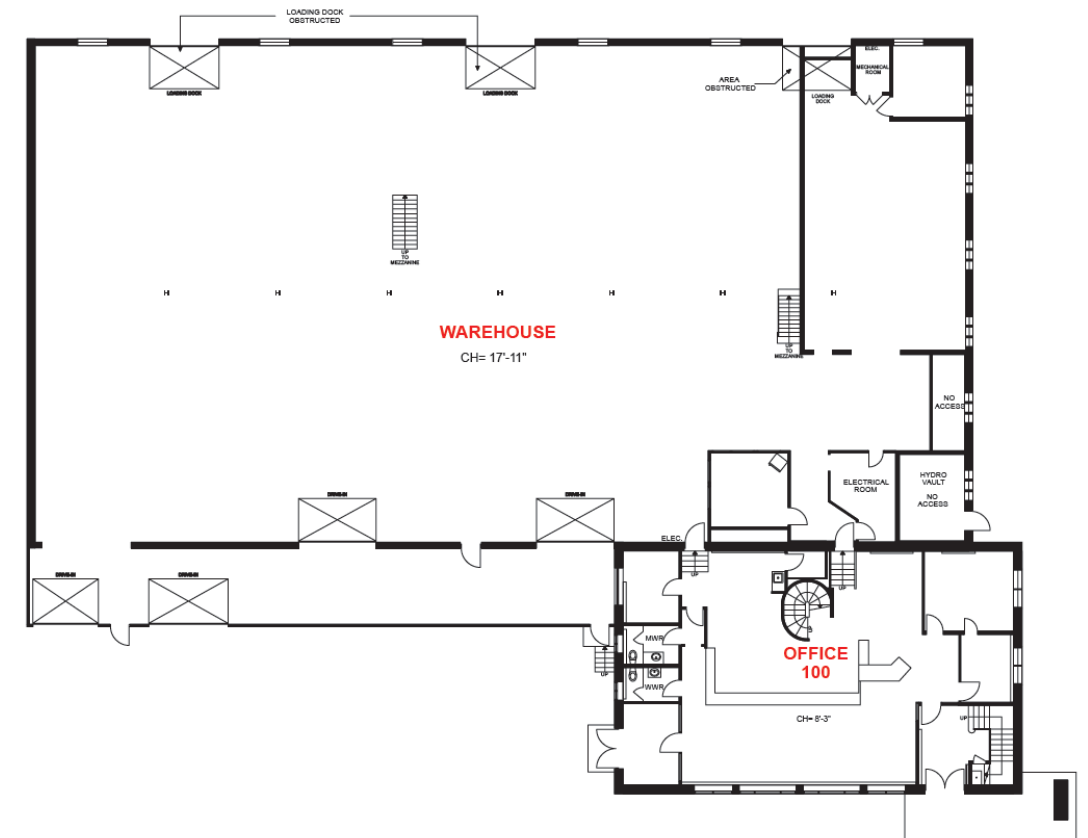


1 truck-level door
1 drive-in door



Zoning
Industrial & Commercial

Floor plan



Financial Details

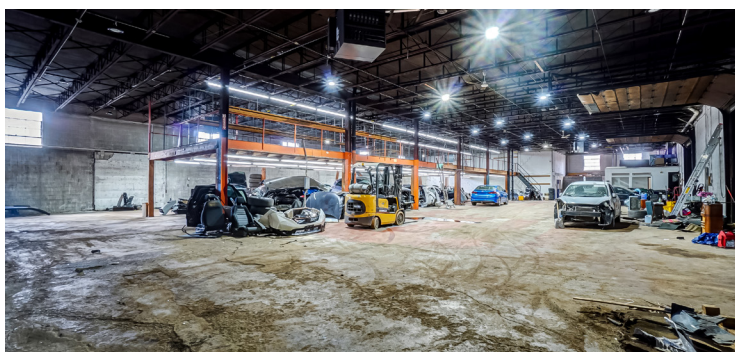
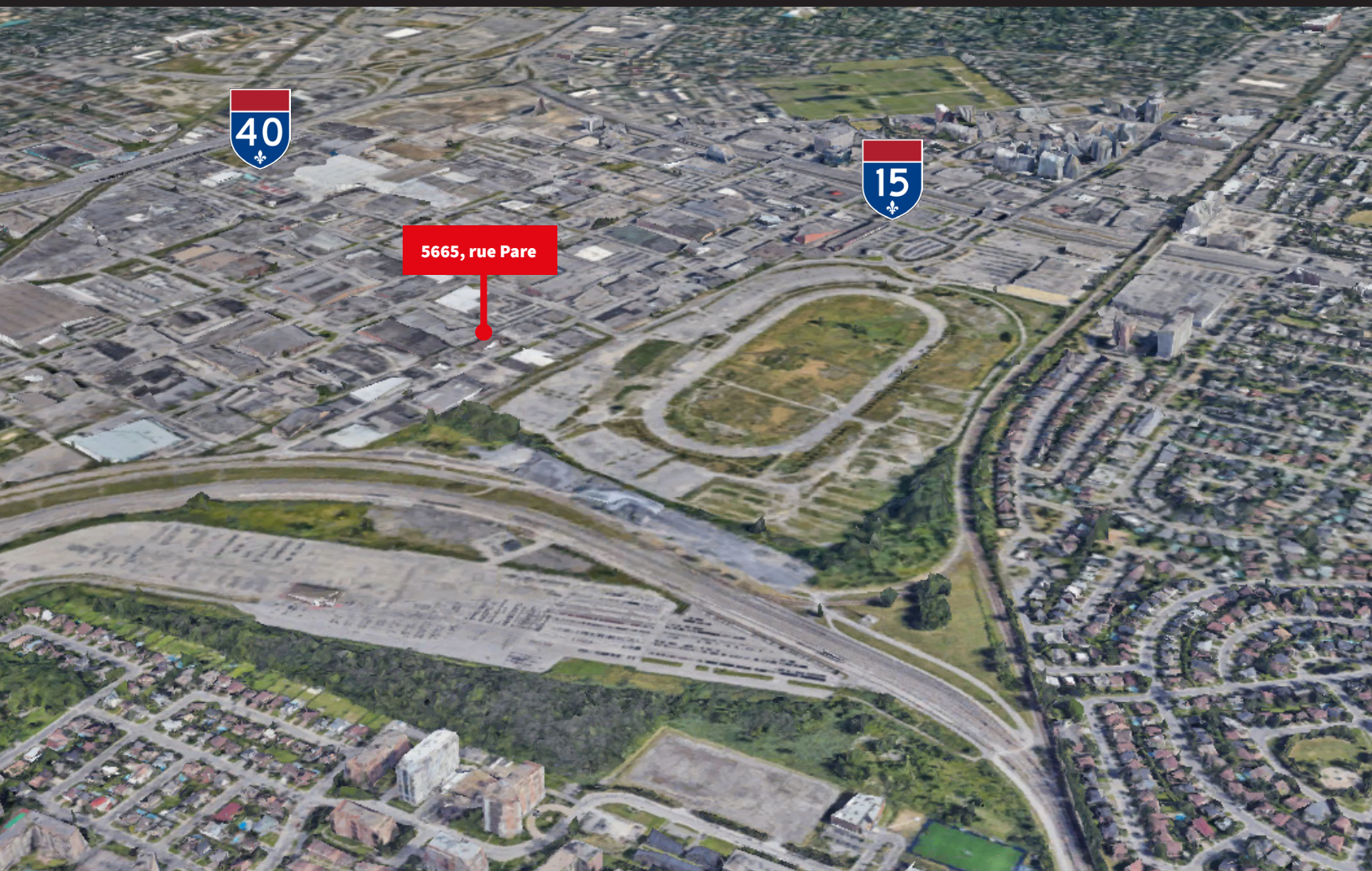
Net Rent
\$16.00 / SF

Additional rent
\$4.00 / SF

Electricity
Metered

5665 Paré Street

Mount-Royal, Quebec H4P 1S1



Contact

Antoine Dumas

Associate
Commercial Real Estate Broker
+1 514 917 7760
antoine.dumas@jll.com

Brandon Allen, SIOR

Executive Vice President
Certified Real Estate Broker
+1 514 406 6052
brandon.allen@jll.com



7405 route Transcanadienne, suite 360
Saint-Laurent (Québec) H4T 1Z2

514 875 7777