

10105

BANBURRY CROSS DR

LAS VEGAS, NV 89144

SUMMERLIN III
MEDICAL OFFICE
FOR LEASE

One Turnkey
Suite Available



MIKE TYMCZYN

VICE PRESIDENT
702.216.2371 **DIRECT**
miket@dcghealthcare.com
BS.0147041



HEALTHCARE



PROPERTY HIGHLIGHTS

- On the campus of Summerlin Hospital Medical Center
- Professional property management
- Build-to-suit shell space available
- Tenant improvement allowances available
- Current specialties include: **Pediatrics, Cardiology, Orthopedics and Pulmonology**



AREA MAP



SUMMERLIN PARKWAY



SUMMERLIN III

SUMMERLIN PARKWAY

SUMMERLIN I

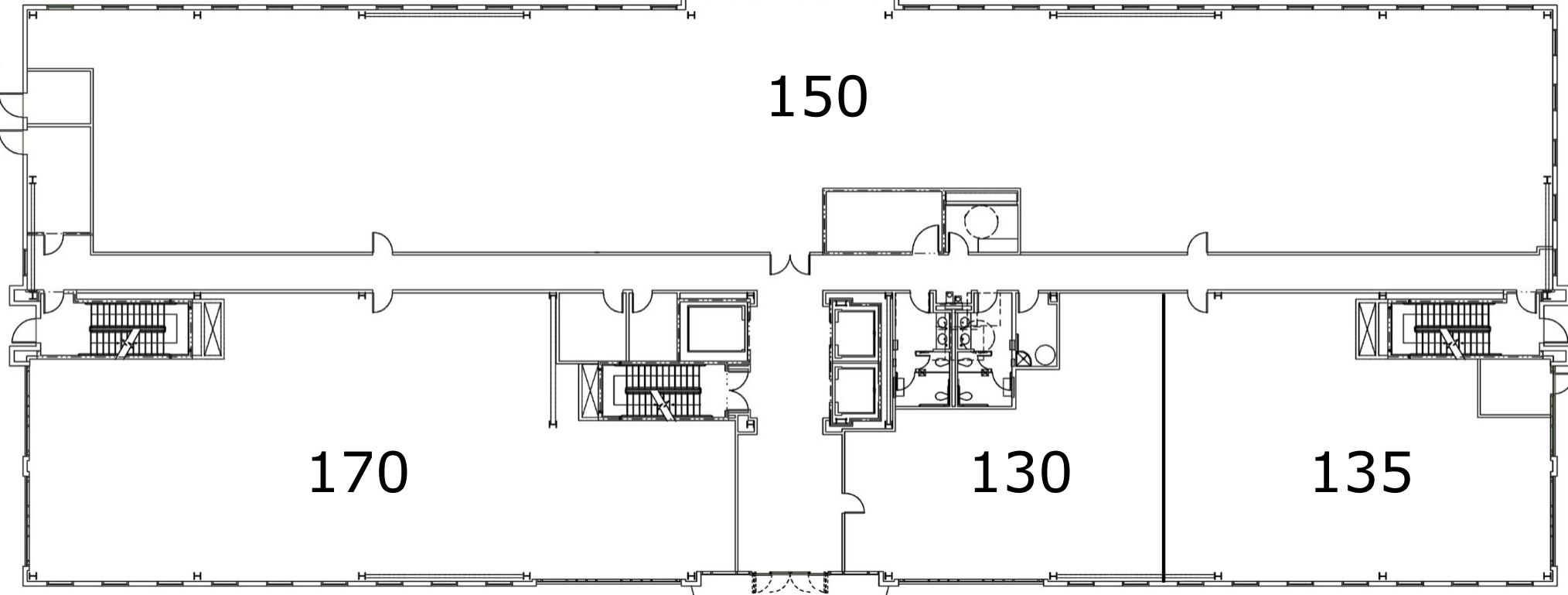
SUMMERLIN II

N HUALAPAI WAY

N TOWN CENTER DR



FIRST FLOOR

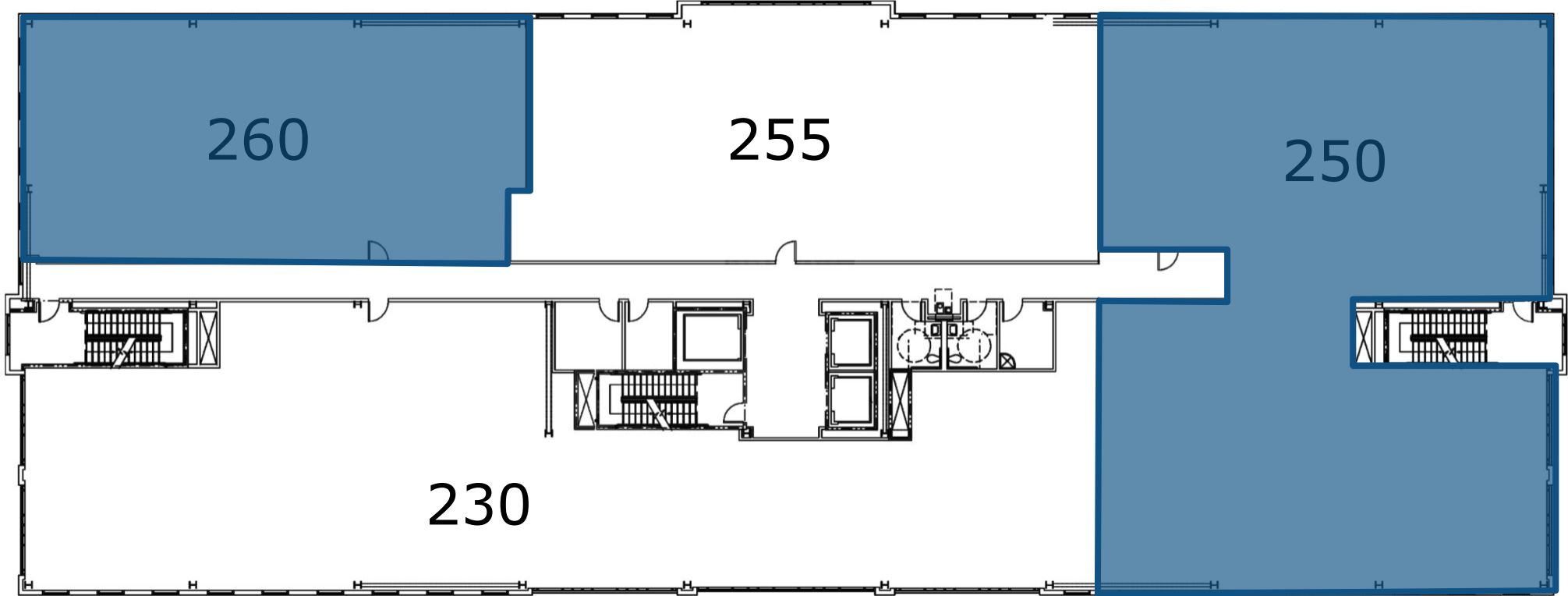


SECOND FLOOR

AVAILABLE SUITES



SUITE 250	6,730 SF TURNKEY
SUITE 260	3,179 SF SHELL



SUITE 250 SUMMERLIN MEDICAL OFFICE III



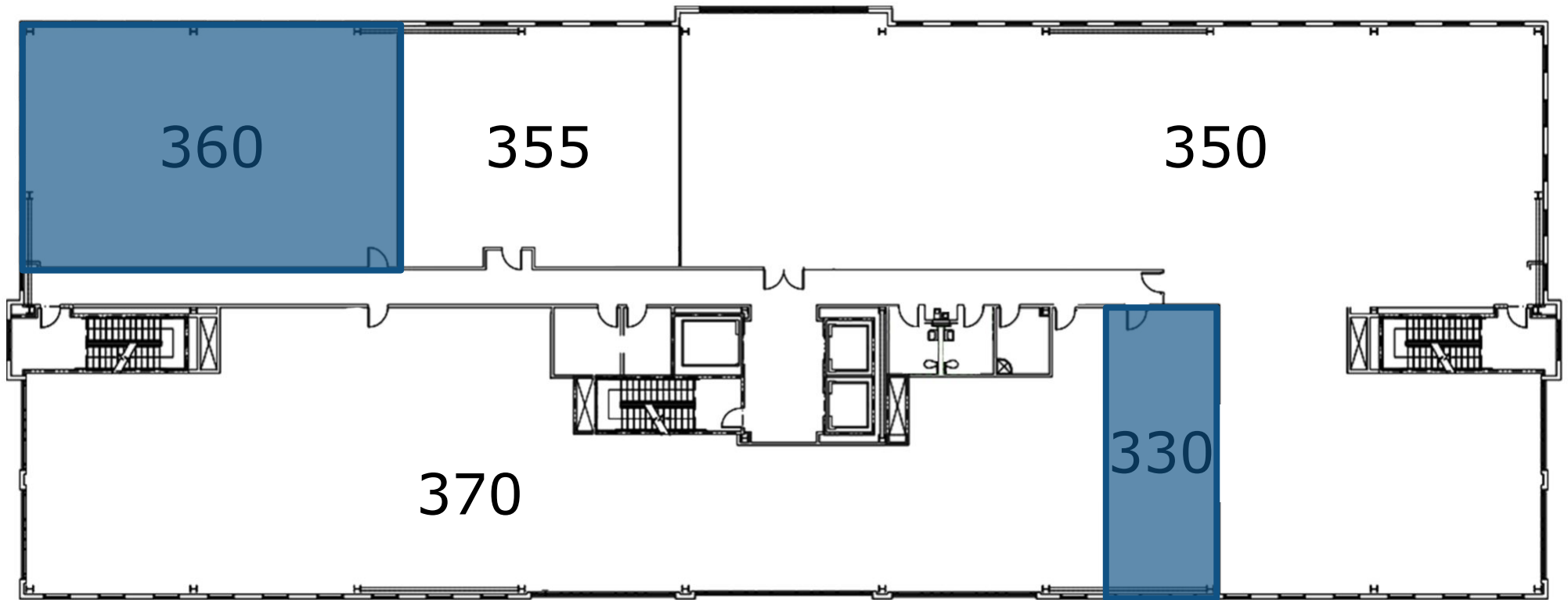
SUITE 250 SUMMERLIN MEDICAL OFFICE III



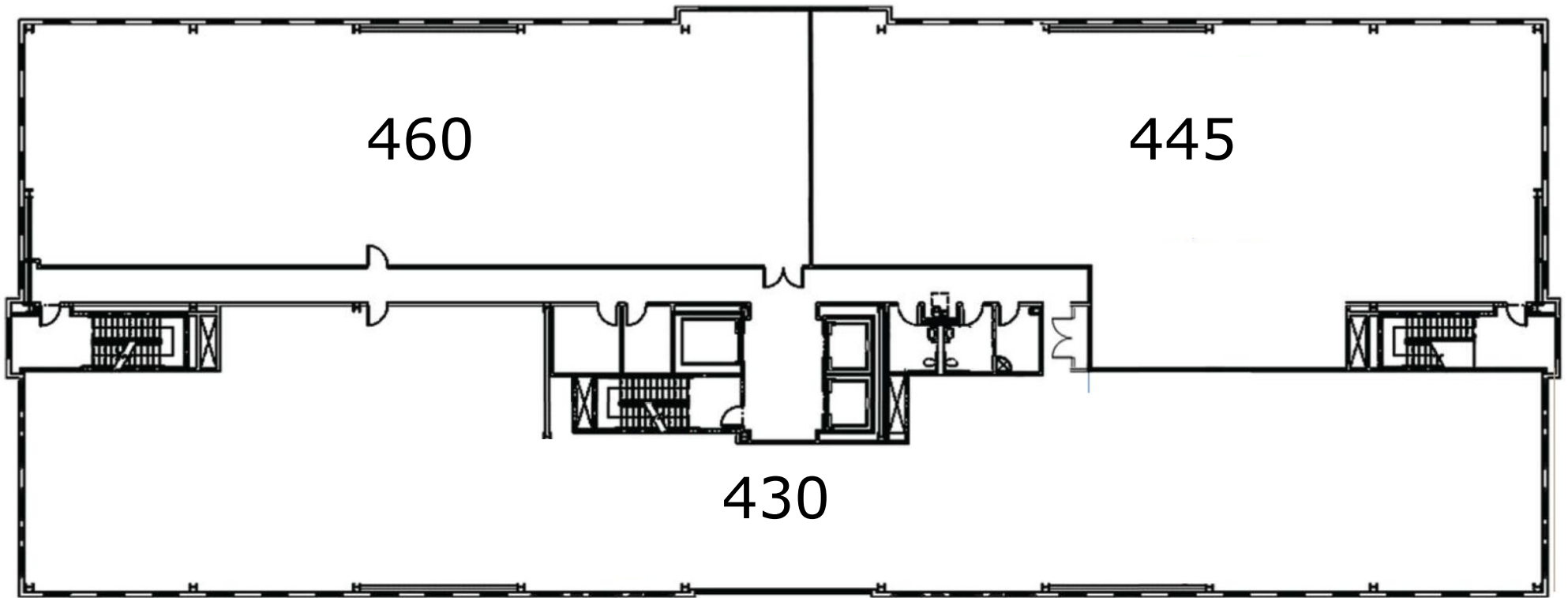
THIRD FLOOR

AVAILABLE SUITES

SUITE 330	1,130 SF SHELL
SUITE 360	2,594 SF SHELL



FOURTH FLOOR



HOSPITAL SERVICES



Cardiovascular

- Chest Pain Center
- Angioplasty
- Cardiac catheterization
- Pacemaker/defibrillator implants
- Bi-ventricular implants
- Peripheral vascular interventions
- Cardiovascular surgery
- Intravascular Ultrasound

Endoscopic Procedures

Laboratory Services

Maternity Services

- Triage
- Antepartum
- Labor and Delivery
- Postpartum
- Level I-II-III Neonatal ICU

Rehabilitation

- Inpatient Physical Therapy
- Speech Therapy
- Occupational Therapy
- Short-term inpatient rehabilitation unit

Diabetes Treatment Center

- Inpatient care

Dialysis

- Inpatient care

Emergency Services

- Urgent and emergency care 24/7
- Pediatric ER
- Advanced primary stroke center

Orthopedics

Radiology

- Angiography
- CT scan
- MRI
- Nuclear Medicine
- X-ray
- Digital Mammography

Surgery

- Inpatient
- Outpatient
- Robotic

Wound Care

- Inpatient care
- Outpatient care
- Hyperbaric medicine

MIKE TYMCZYN

VICE PRESIDENT
702.216.2371 **DIRECT**
miket@dcghealthcare.com
BS.0147041



HEALTHCARE

