

COCHRAN

— commons —

PREMIER OFFICE SPACE IN THE SOUTH HILLS

151 ROESSLER ROAD, PITTSBURGH, PA 15220
(OFF OF COCHRAN RD)



Space Highlights:

- Space Available on Multiple Floors:
Between 3,000 SF and 16,000 SF (Full Floor Available)
- Asking Rent \$20.50 including utilities and janitorial
- Floor to ceiling glass windows with gorgeous views
- Space will be fully renovated prior to occupancy
- Abundant surface parking
- Numerous tenant amenities nearby



NEWMARK

The information contained herein has been obtained from sources deemed reliable but has not been verified and no guarantee warranty or representation either express or implied is made with respect to such information. Terms of sale or lease and availability are subject to change or withdrawal without notice.

For information, please contact:

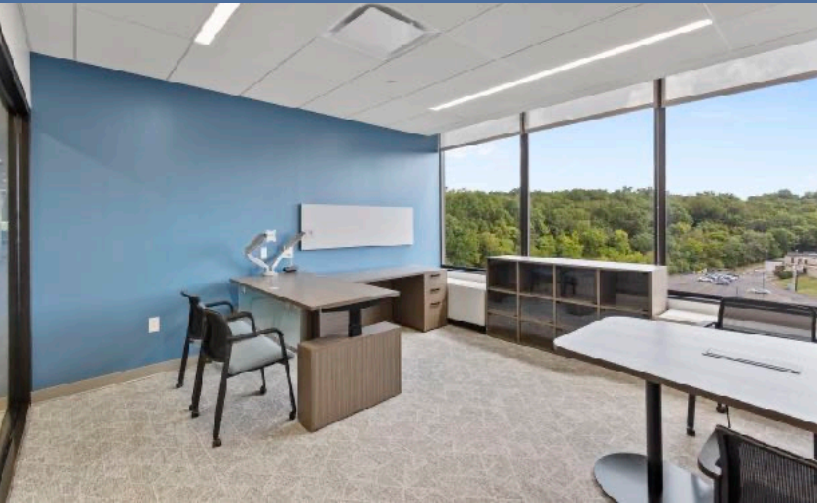
Martin Perry, CCIM
Senior Managing Director
O 412-281-0100
M 412-310-2315
martin.perry@nmrk.com

Kevin Spence
Managing Director
O 412-281-0100
M 412-303-0608
kevin.spence@nmrk.com

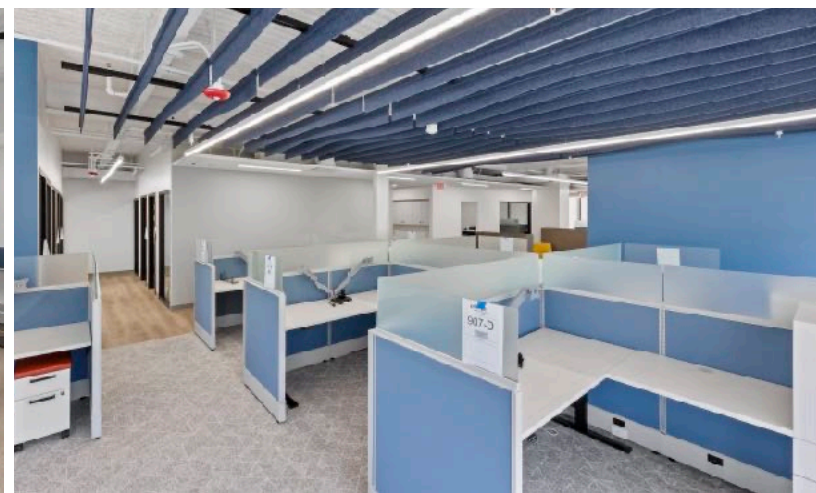
COCHRAN

— commons —

PREMIER OFFICE SPACE IN THE SOUTH HILLS



151 ROESSLER ROAD, PITTSBURGH, PA 15220



5 Mile Radius Demographics

275,492

Population

\$73,384

Median Household
Income



2.2

Average
Household Size



42.9

Median Age

For information, please contact:



Martin Perry, CCIM
Senior Managing Director
O 412-281-0100
M 412-310-2315
martin.perry@nmrk.com



Kevin Spence
Managing Director
O 412-281-0100
M 412-303-0608
kevin.spence@nmrk.com

NEWMARK

COCHRAN

— commons —

PREMIER OFFICE SPACE IN THE SOUTH HILLS

151 ROESSLER ROAD, PITTSBURGH, PA 15220

Abundant Surface Parking



- Space Available on Multiple Floors:
Between 3,000 SF and 16,000 SF (Full Floor Available)
- Asking Rent \$20.50 including utilities and janitorial

For information, please contact:



Martin Perry, CCIM
Senior Managing Director
O 412-281-0100
M 412-310-2315
martin.perry@nmrk.com



Kevin Spence
Managing Director
O 412-281-0100
M 412-303-0608
kevin.spence@nmrk.com

NEWMARK

COCHRAN

— commons —

151 ROESSLER ROAD, PITTSBURGH, PA 15220

A Mixed Use Community in the Heart of the South Hills

- Office and Retail - LEASING NOW
- Retail is on Cochran Road
- Apartments - COMING 2026



For information, please contact:



Martin Perry, CCIM
Senior Managing Director
O 412-281-0100
M 412-310-2315
martin.perry@nmrk.com



Kevin Spence
Managing Director
O 412-281-0100
M 412-303-0608
kevin.spence@nmrk.com

NEWMARK