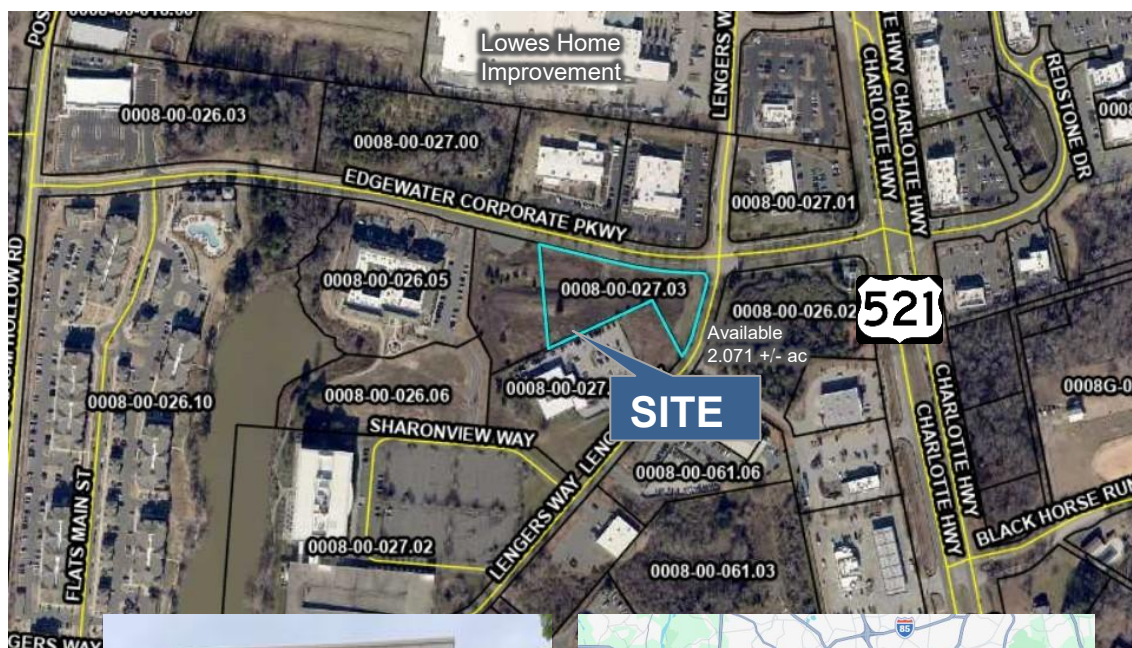


Edgewater Corporate Parkway Indian Land, SC 29707

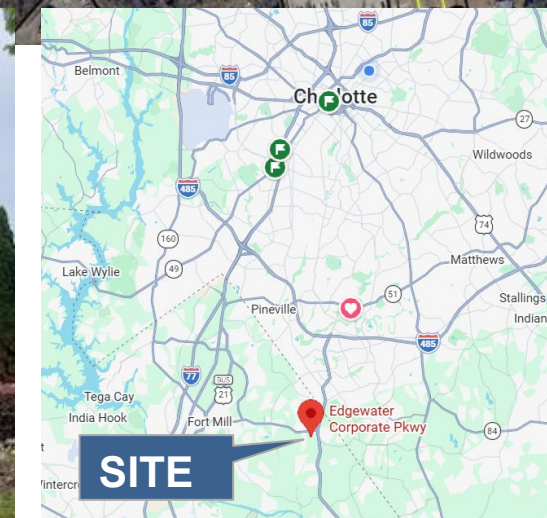
2.071+/- Acres

- Parcel ID: 0008-00-027.03
- Zoning: RB (Regional Business)
- Lancaster County is one of the fastest growing counties in the country. The majority of this growth is in the Indian Land area of the County
- Minutes from the NC/SC border with potential SC tax advantages
- Excellent medical office location adjacent to Edgewater Surgical Center
- Shared parking easement

PRICE: \$1,500,000



**Edgewater
Business Park**



CONTACT

Michelle Polito
cell 704-995-4885
michelle@knoxgroupinc.com

19725 Oak Street
Suite 8
Cornelius, NC 28031
704.896.1911



All information regarding this property was obtained from sources deemed reliable but no warranty or representation is made of the accuracy thereof and the properties are subject to prior sale or lease or withdrawal.



Demographics

	1 mile	3 mile	5 mile
Population	2,853	20,279	70,993
Average Household Income	\$68,849	\$96,656	\$105,023

CONTACT

Michelle Polito
 cell 704-995-4885
 michelle@knoxgroupinc.com

19725 Oak Street
 Suite 8
 Cornelius, NC 28031
 704.896.1911



All information regarding this property was obtained from sources deemed reliable but no warranty or representation is made of the accuracy thereof and the properties are subject to prior sale or lease or withdrawal.