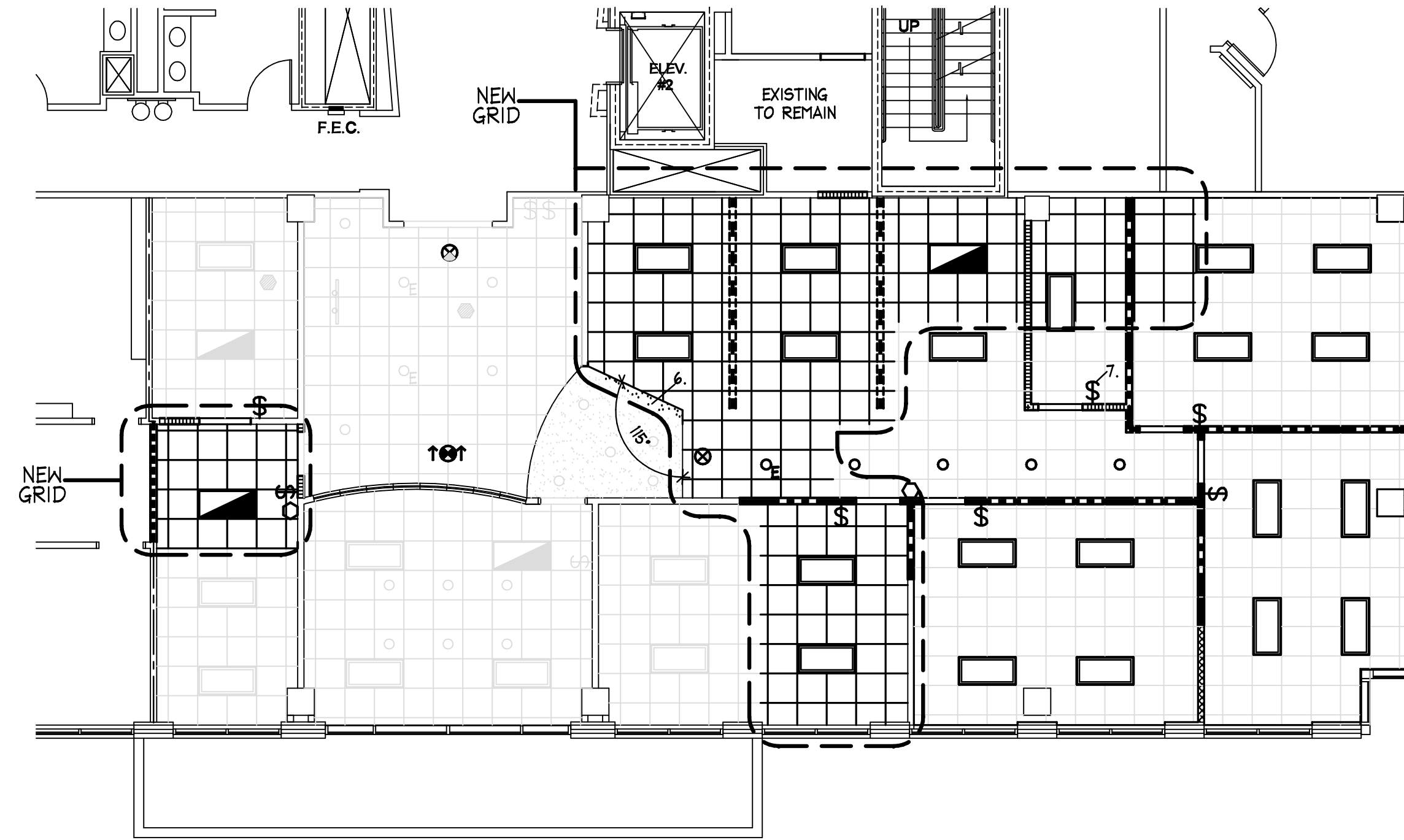


ELECTRICAL PLAN

SCALE: 1/8" = 1'-0"



REFLECTED CEILING PLAN

SCALE: 1/8" = 1'-0"

ELECTRICAL LEGEND

- ⊖ WALL MOUNTED ISOLATED OUTLET @ BLD. STD. HGT. (SPECIAL HGTS. NOTED).
- ⊕ WALL MOUNTED DUPLEX OUTLET @ BLD. STD. HGT. (SPECIAL HGTS. NOTED).
- ⊕ WALL MOUNTED QUAD OUTLET @ BLD. STD. HGT. (SPECIAL HGTS. NOTED).
- ⊖ WALL MOUNTED DEDICATED DUPLEX OUTLET @ BLD. STD. HGT. (SPECIAL HGTS. NOTED).
- ⊖ WALL MOUNTED TELEPHONE OUTLET @ BLD. STD. HGT. (SPECIAL HGTS. NOTED).
- ⊖ WALL MOUNTED DATA OUTLET @ BLD. STD. HGT. (SPECIAL HGTS. NOTED).
- ⊖ WALL MOUNTED SINGLE J-BOX FOR TELEPHONE AND DATA OUTLET @ BLD. STD. HGT. WITH ONE 3/4" CONDUIT STUB OUT ABOVE CEILING. (SPECIAL HGTS. NOTED)
- ⊖ FLOOR MOUNTED DUPLEX OUTLET.
- ⊖ FLOOR MOUNTED TELEPHONE OUTLET.
- ⊖ FLOOR MOUNTED DATA OUTLET.
- ⊖ FLOOR MOUNTED DUPLEX, PHONE AND DATA OUTLET.
- ⊖ WALL MOUNTED CABLE BOX.

NOTE: "E" DENOTES EXISTING TO REMAIN, UNLESS NOTED OTHERWISE.

ELECTRICAL NOTES

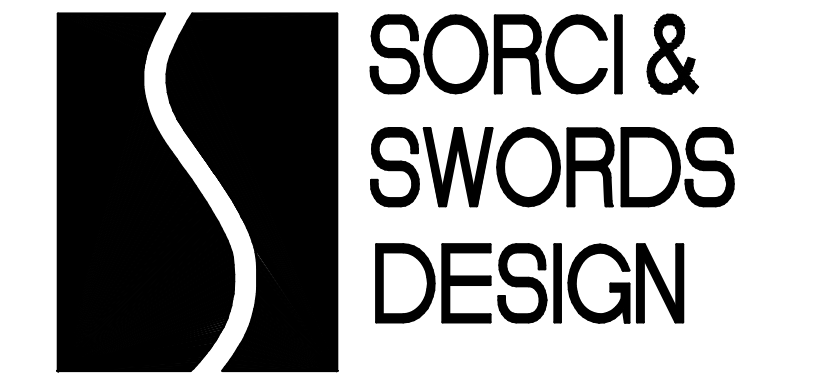
1. ALL EXISTING ELECTRICAL NOT EFFECTED BY DEMOLITION OR NEW CONSTRUCTION TO REMAIN (UNLESS NOTED OTHERWISE).
2. FURNITURE, N.I.C. FURNITURE MANUFACTURER TO FIELD VERIFY EXISTING SPACE BEFORE ORDERING FURNITURE. DO NOT SCALE FROM PLAN.

REFLECTED CEILING LEGEND

- ⊖ (RELOCATED) 2' X 4' BLD. STD. FLUORESCENT LIGHT FIXTURE.
- ⊖ (EXISTING) 2' X 4' BLD. STD. FLUORESCENT LIGHT FIXTURE.
- ⊖ 2' X 4' BLD. STD. FLUORESCENT EMERGENCY LIGHT FIXTURE.
- ⊖ (EXISTING) 2' X 4' BLD. STD. FLUORESCENT EMERGENCY LIGHT FIXTURE.
- ⊖ BUILDING STANDARD EXIT LIGHT.
- ⊖ (EXISTING) BUILDING STANDARD EXIT LIGHT.
- ⊖ BUILDING STANDARD CEILING MOUNTED EMERGENCY SIGNAL DEVICE.
- ⊖ BUILDING STANDARD REMOTE STROBE FIRE ALARM FIXTURE. 80" A.F.F.
- ⊖ BUILDING STANDARD CEILING MOUNTED EMERGENCY SIGNAL DEVICE & REMOTE STROBE FIRE ALARM FIXTURE.
- ⊖ WALL SWITCH MOUNTED AT 46" A.F.F. (D-DIMMER, 3-WAY SWITCH)
- ⊖ (EXISTING) WALL SWITCH MOUNTED AT 46" A.F.F. (D-DIMMER & 3-WAY SWITCH)
- ⊖ BUILDING STANDARD DOWNLIGHT
- ⊖ BUILDING STANDARD EMERGENCY DOWNLIGHT
- ⊖ (EXISTING) BUILDING STANDARD DOWNLIGHT
- ⊖ (EXISTING) BUILDING STANDARD EMERGENCY DOWNLIGHT
- ⊖ (EXISTING) TRACK LIGHTING.
- ⊖ SPRINKLER HEAD
- ⊖ EXHAUST FAN

REFLECTED CEILING NOTES

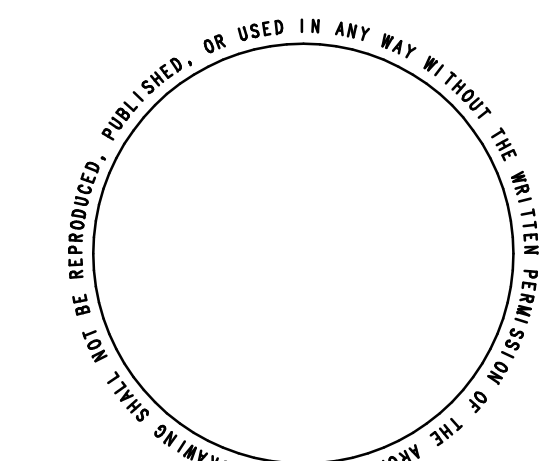
1. EXISTING CEILING GRID, TILES, AND FIXTURES TO REMAIN. RELOCATE FIXTURES AS SHOWN. REPAIR OR REPLACE GRID, TILES, AND FIXTURES AS REQUIRED.
2. CONTRACTOR TO FIELD VERIFY THAT EXIT LIGHTS, EMERGENCY LIGHTS, STROBE AND FIRE ALARM FIXTURES MEET APPLICABLE CODES. MODIFY AS REQUIRED.
3. NEW CEILING GRID AND TILES TO ALIGN WITH EXISTING AS SHOWN.
4. ALL SPRINKLER WORK TO BE INSTALLED BY A TENNESSEE LICENSED SPRINKLER SYSTEM CONTRACTOR. ALL WORK TO COMPLY WITH CODES.
5. SWITCHES ARE PROVIDED FOR LOCATION ONLY. CONTRACTOR TO PROVIDE ADEQUATE SWITCHING AS NEEDED TO MEET ALL APPLICABLE ENERGY CONSERVATION CODES.
6. CONTRACTOR TO PROVIDE & INSTALL A DRYWALL CEILING TO MATCH EXISTING AS SHOWN.
7. CONTRACTOR TO HOLD SWITCH IN TELE./STORAGE ROOM 210 TIGHT TO DOOR FRAME.
8. ALL LIGHT FIXTURES THROUGHOUT TO BE EXISTING OR RELOCATED. NO NEW LIGHT FIXTURES TO BE INSTALLED.



CORPORATE
INTERIOR
DESIGN

209 TENTH
AVENUE
SOUTH
SUITE 209
NASHVILLE
TENNESSEE
37203-4104
(615) 726 1141
FAX 726-1098

www.sorcilandwords.com
sedinc@SORCIANDWORDS.COM



**CAMERON
WORLEY P.C.**

2ND FLOOR

112 WESTWOOD PLACE
SUITE 240
BRENTWOOD, TENNESSEE 37027

DESCRIPTION	DATE
ISSUED FOR APPROVAL	08/17/2009
ISSUED FOR PERMIT	08/21/2009
FINISH PLAN ISSUED	09/01/2009

PROJECT NO.	10671-000
DATE	08/13/2009
DRAWN BY	TH
CHECKED BY	MS

ELECTRICAL PLAN AND
REFLECTED CEILING PLAN

A 2 . 2