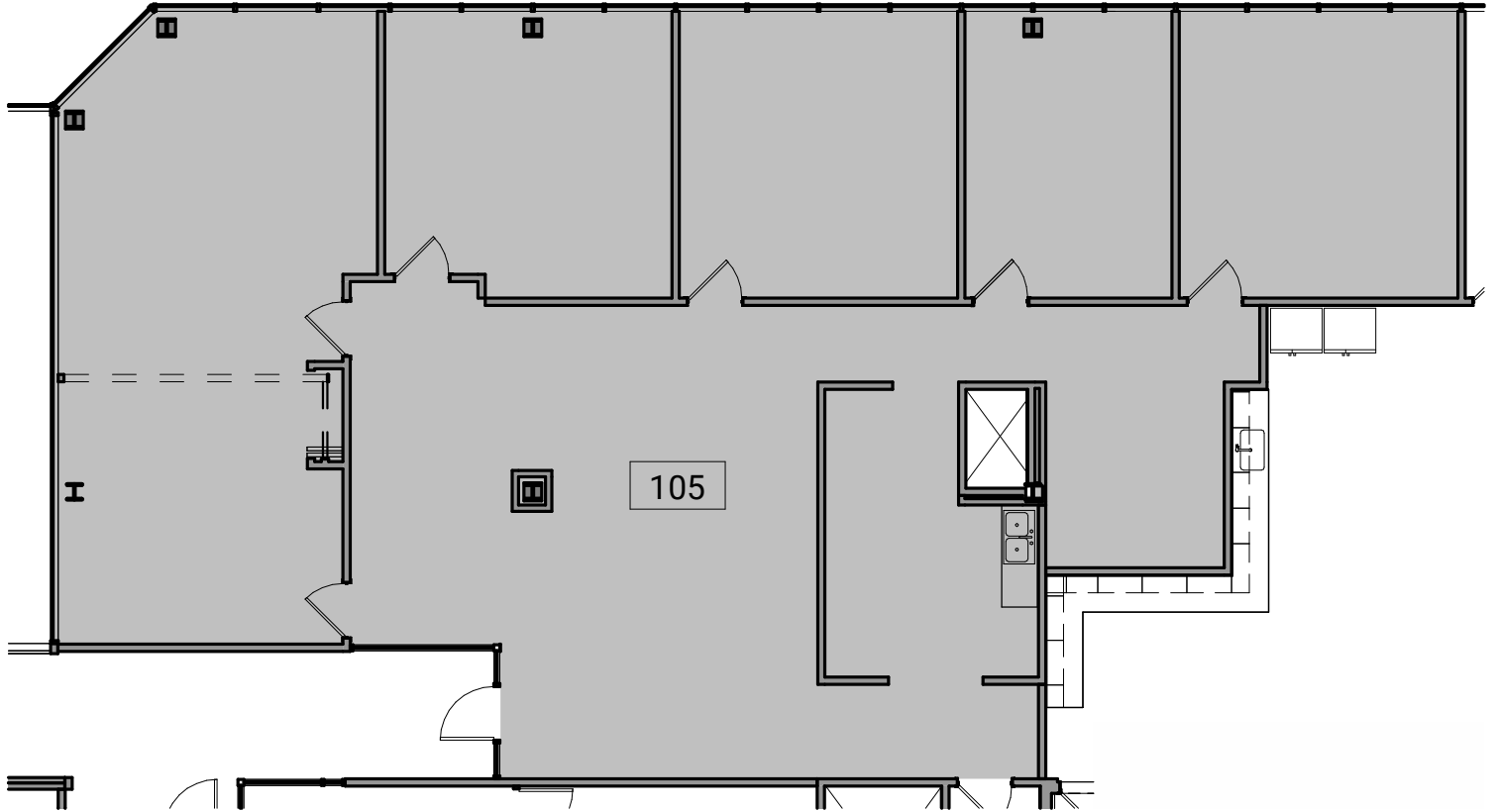


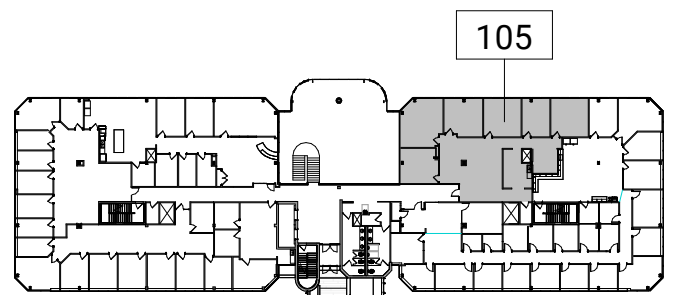
FOR LEASE

# 315 E. Eisenhower Pkwy.

315 E. Eisenhower Pkwy., Ann Arbor, MI 48104



**2** Suite 105 - Partial Level 1 Existing Floor Plan  
3/32" = 1'-0"  
4' 8' 12'



**1** Key Plan - Level 1  
1" = 80'-0"  
40' 80'

FOR MORE INFORMATION CONTACT KAREN O'NEIL  
Commercial Leasing Associate | [koneil@oxfordcompanies.com](mailto:koneil@oxfordcompanies.com) | 734.665.6500