

The Colliers logo is located in the top right corner. It consists of the word "Colliers" in a white serif font, centered within a dark blue rectangular box. Below the text, there are three horizontal stripes in red, yellow, and blue.

# 6900

## WISCONSIN

Bethesda, Maryland

Office Space For Lease

READY-TO-GO SPEC SUITES

**Katie Datin**

Senior Vice President  
+1 202 534 3614  
katie.datin@colliers.com

**Nathan Crowe**

Senior Vice President  
+1 202 534 3623  
nate.crowe@colliers.com

United States  
Post Office

6900

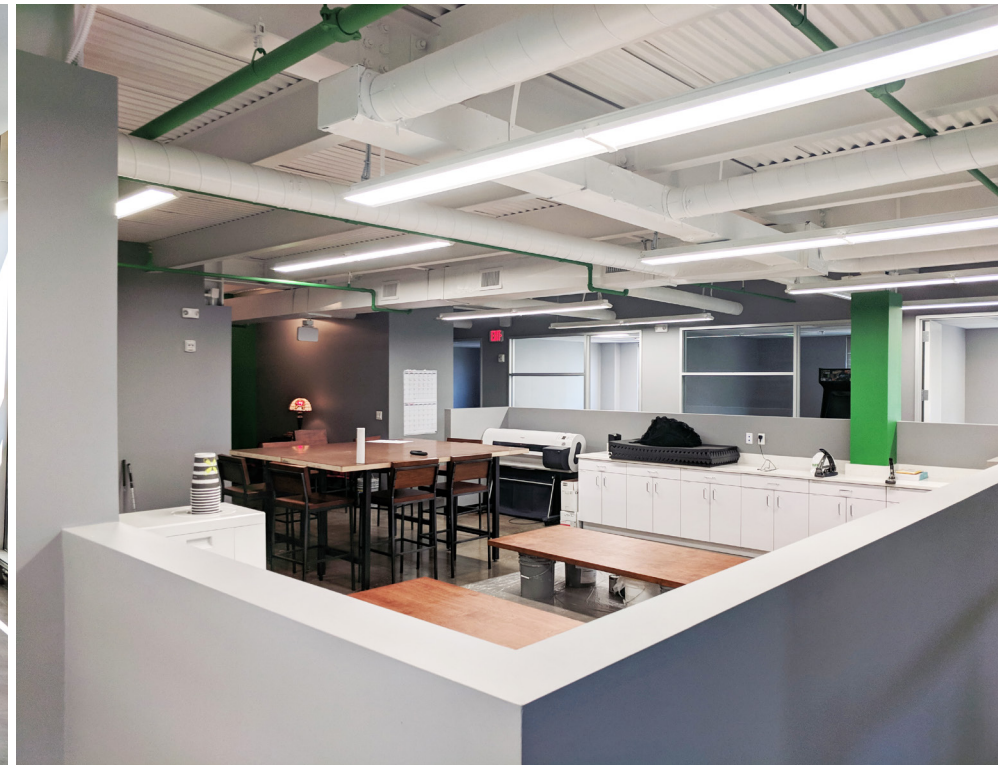
WE FOR LEASE  
202-482-6145

# Highlights

- Walking Distance to Metro and Future Purple Line
- Quick Access to Friendship Heights and Washington, D.C.
- 5-Minute Walk to Bethesda Row
- Bike Score: Very Bikeable (81)

825 - 2,009 SF

READY-TO-GO SPEC SUITES

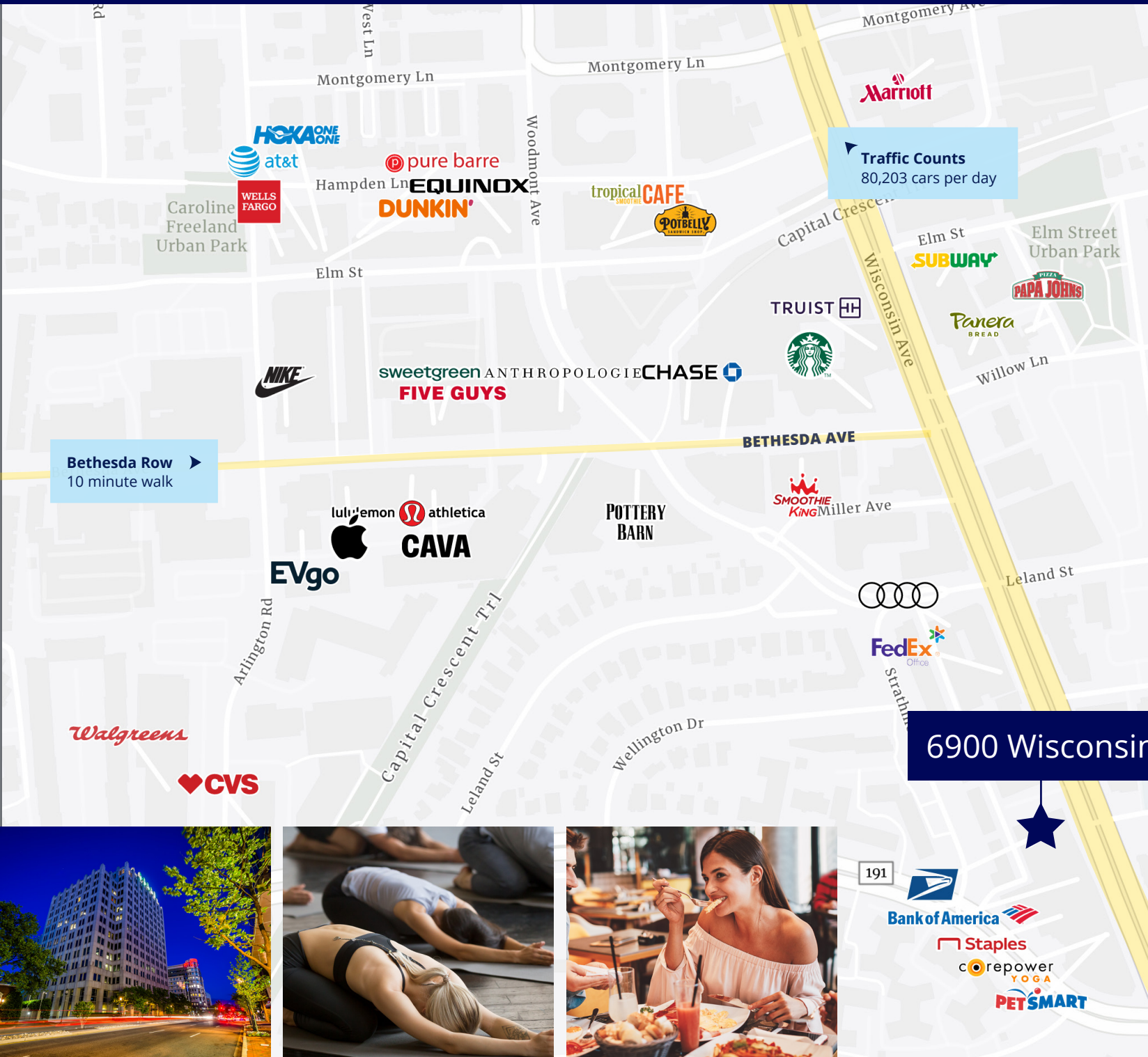


This document has been prepared by Colliers International for advertising and general information only. Colliers International makes no guarantees, representations or warranties of any kind, expressed or implied, regarding the information including, but not limited to, warranties of content, accuracy and reliability. Any interested party should undertake their own inquiries as to the accuracy of the information. Colliers International excludes unequivocally all inferred or implied terms, conditions and warranties arising out of this document and excludes all liability for loss and damages arising there from. This publication is the copyrighted property of Colliers International and/or its licensor(s). ©2026. All rights reserved.

# Steps from Bethesda Row

## Walk to Dozens of Nearby Restaurants

### Core Power Yoga, just a 3-Minute Walk Away



Traffic Counts  
80,203 cars per day

Bethesda Row  
10 minute walk

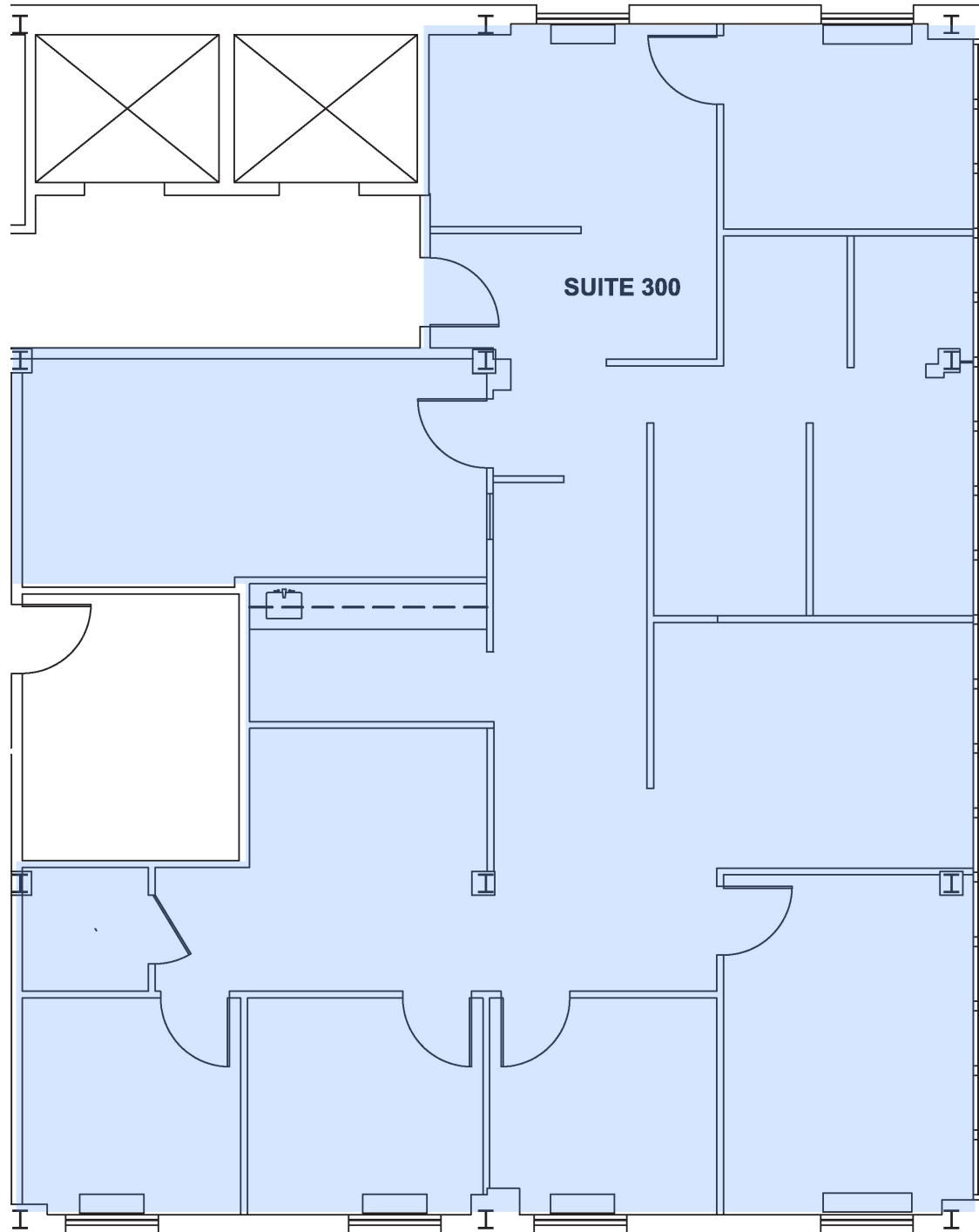
6900 Wisconsin



1300 ft

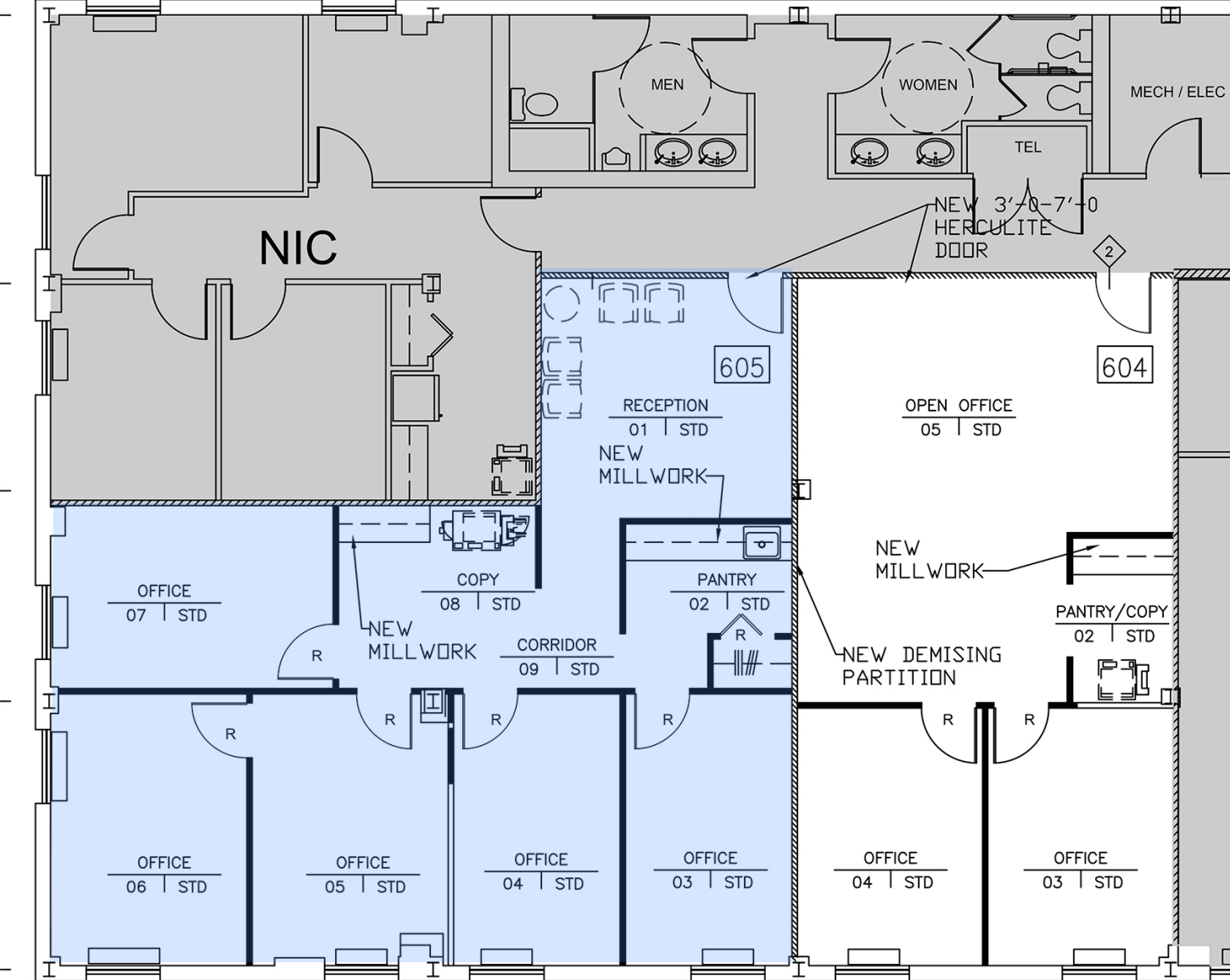
# Third Floor

SUITE 300  
**1,939 SF**



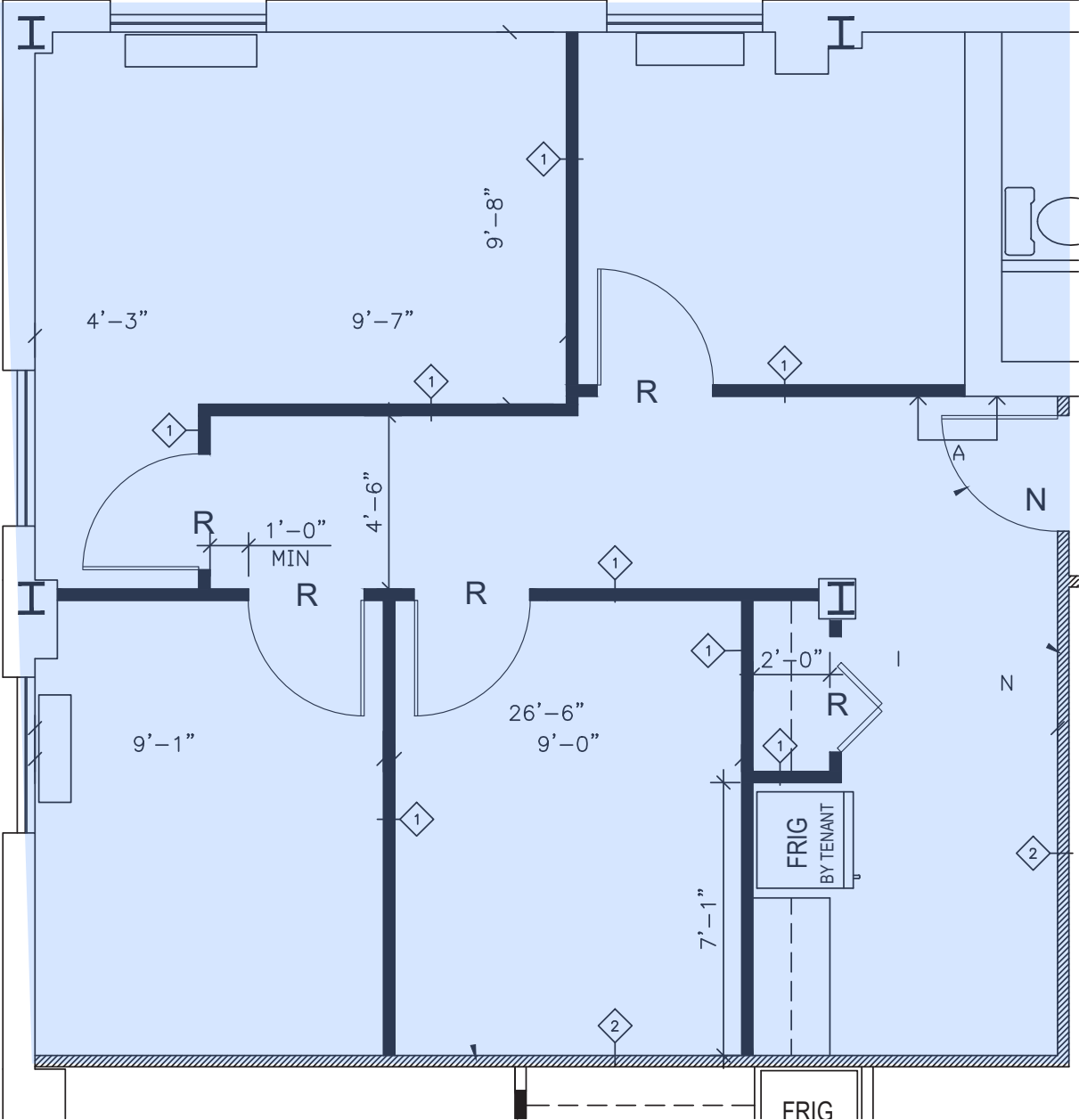
# Sixth Floor

SUITE 605  
**1,448 SF**



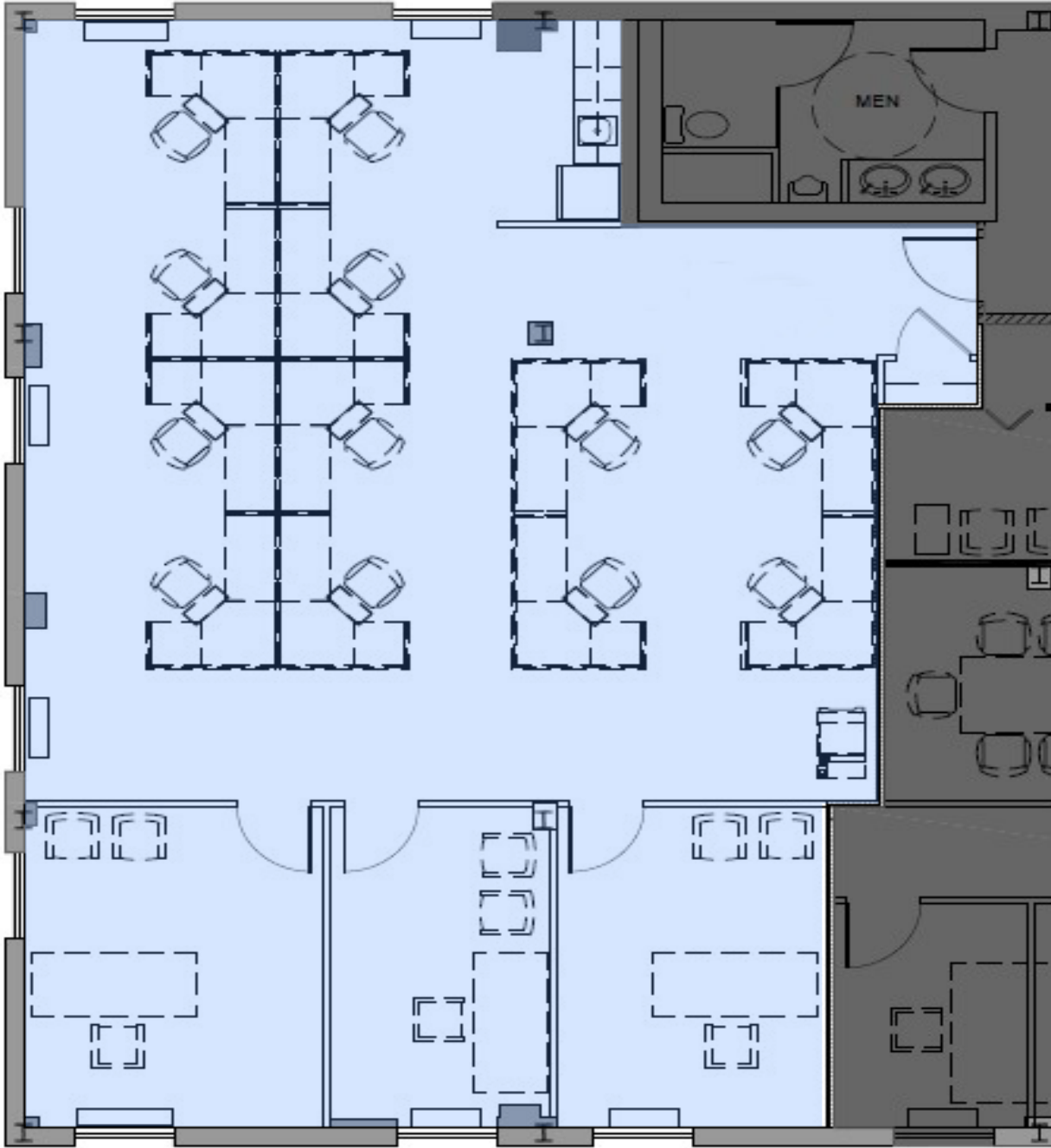
# Sixth Floor

SUITE 606  
**839 SF**



# Seventh Floor

SUITE 704  
**2,154 SF**





**Katie Datin**

Senior Vice President  
+1 202 534 3614  
katie.datin@colliers.com

**Nate Crowe**

Senior Vice President  
+1 202 534 3623  
nate.crowe@colliers.com



This document/email has been prepared by Colliers for advertising and general information only. Colliers makes no guarantees, representations or warranties of any kind, expressed or implied, regarding the information including, but not limited to, warranties of content, accuracy and reliability. Any interested party should undertake their own inquiries as to the accuracy of the information. Colliers excludes unequivocally all inferred or implied terms, conditions and warranties arising out of this document and excludes all liability for loss and damages arising there from. This publication is the copyrighted property of Colliers and /or its licensor(s). © 2026. All rights reserved. This communication is not intended to cause or induce breach of an existing listing agreement. **Colliers International Group Inc.**