

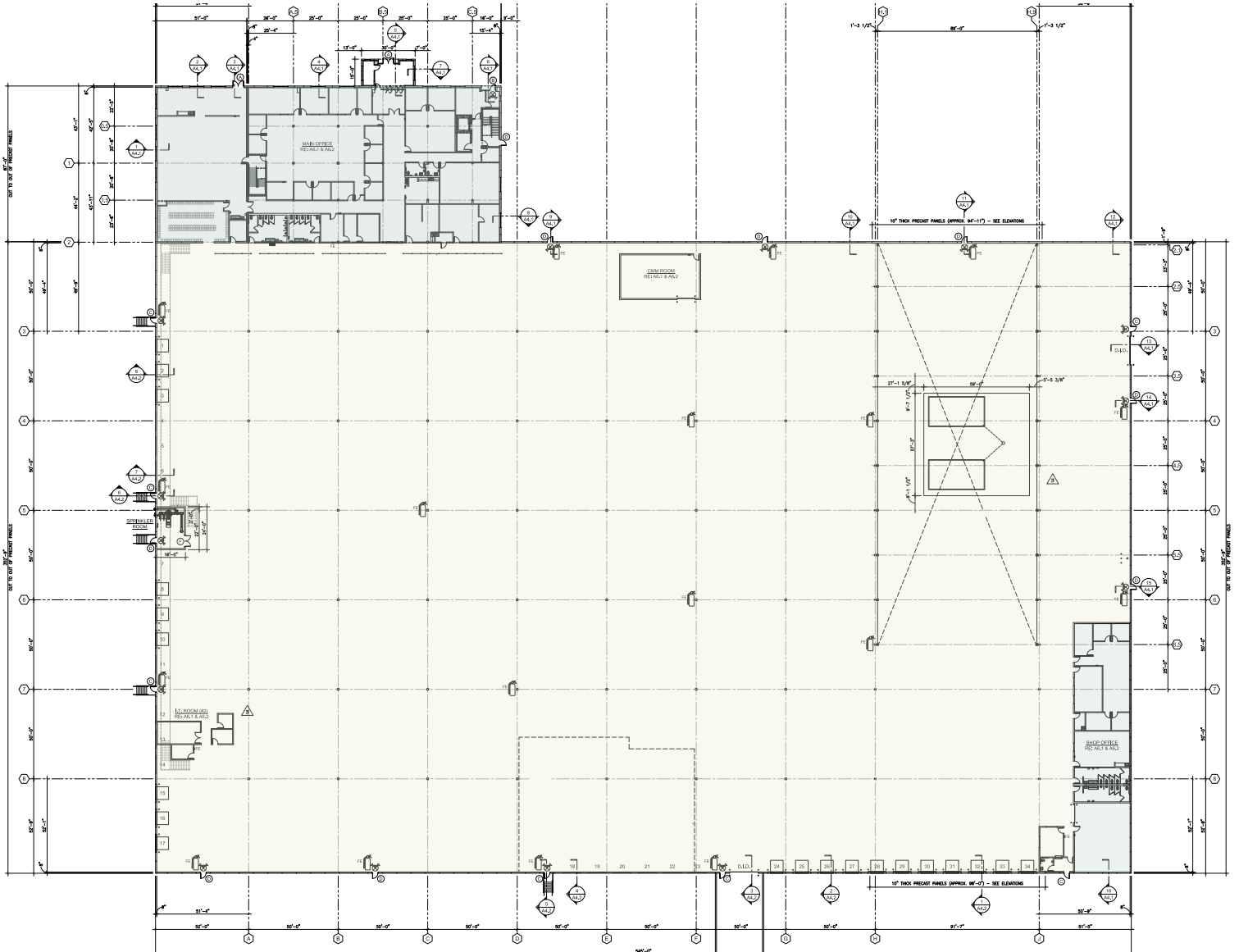
# 675 Corporate Pkwy.

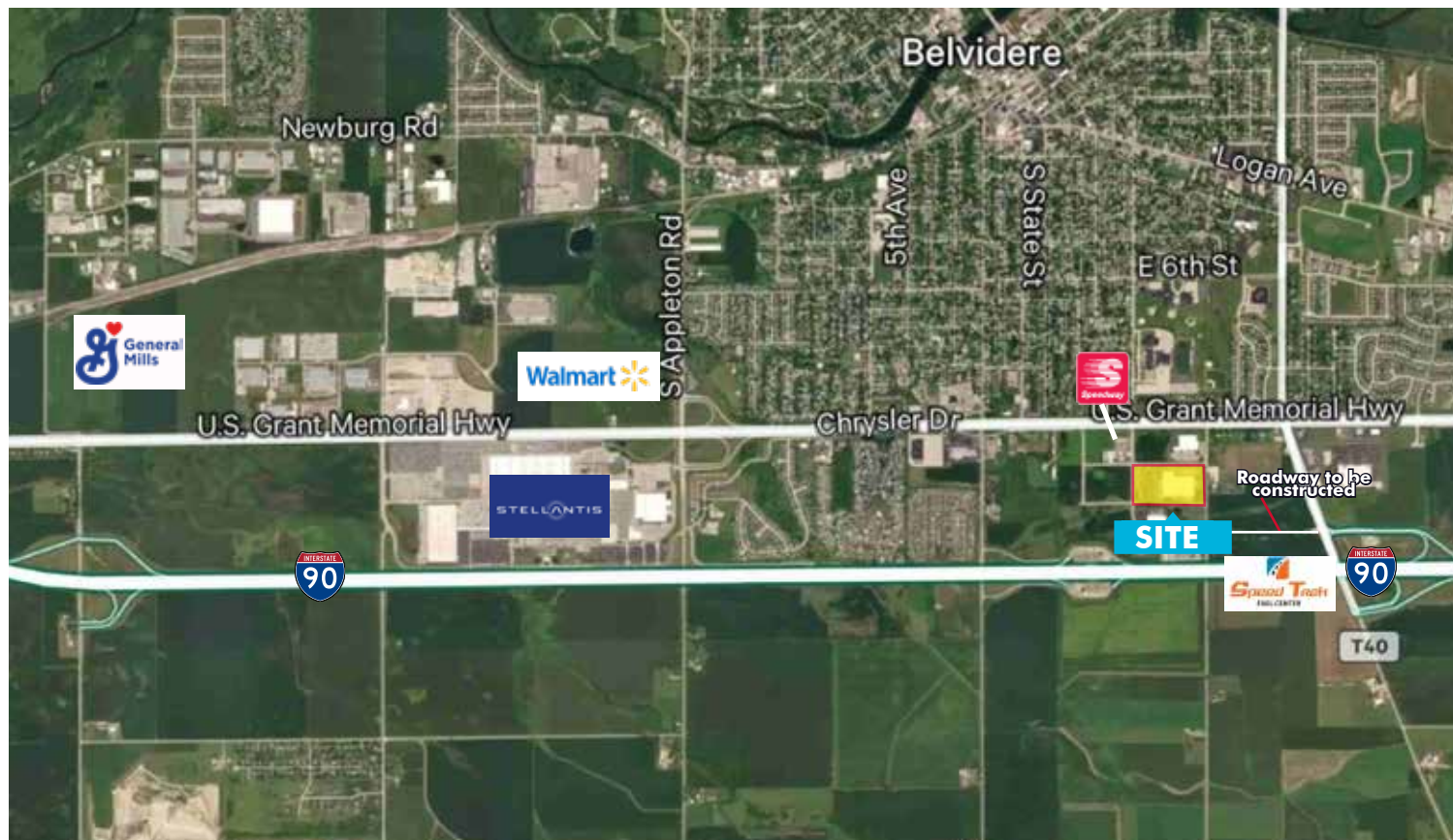
## Belvidere, IL

221,884 SF Building on 22.72 Acres



<b>Total Square Feet</b>	221,884 SF	<b>Power</b>	6,500 Amps (4,000 amps E side & 2,500 amps at NW corner)
<b>Office Space</b>	29,595 SF	<b>Fire Suppression</b>	ESFR
<b>Parking</b>	Approx. 328 auto & 36 trailer	<b>Building FAR</b>	0.22
<b>Clear Height</b>	32' - 34'	<b>Year Built</b>	2017
<b>Floor</b>	4" - 6"	<b>Real Estate Taxes</b>	\$1.05 psf
<b>Docks</b>	20 exterior	<b>Major Interchanges</b>	Under 5 min. to I-90/Genoa Rd. interchange Under 10 min. to I-90/Irene Rd. interchange
<b>Drive-in Doors</b>	2 oversized	<b>Airports</b>	50 min. to O'Hare (FTZ #22) 20 min. to Chicago Rockford Intl. Airport (FTZ#176)
<b>Cranes</b>	One 225' x 100' rail with 60-ton & 40-ton cranes	<b>Intermodal</b>	Union Pacific's Global III (Rochelle, IL) is within 45 min.
<b>Column Spacing</b>	50' x 50'		





## Contact Us

**Karen Walsh**

Senior Vice President

+1 815 218 3438

Karen.Walsh@cbre.com

© 2025 CBRE, Inc. All rights reserved. This information has been obtained from sources believed reliable, but has not been verified for accuracy or completeness. You should conduct a careful, independent investigation of the property and verify all information. Any reliance on this information is solely at your own risk. CBRE and the CBRE logo are service marks of CBRE, Inc. All other marks displayed on this document are the property of their respective owners, and the use of such logos does not imply any affiliation with or endorsement of CBRE. Photos herein are the property of their respective owners. Use of these images without the express written consent of the owner is prohibited.