

420 Russet Run, Pittsboro

\$ 1,250,000

3.526 acres



For Sale

Prime 3.53 acre lot in rapidly growing Chatham Park. Zoned O & I Commercial with potential for subdivision. Mostly level topography and partially cleared. Adjacent to MOSAIC & future Disney Asteria community, offering exceptional growth and investment potential. Ideal for retail, office, mixed-use or future development. Convenient to downtown Pittsboro and Chapel Hill. Do not miss the opportunity for this prime location in rapidly growing Pittsboro.



Eric Andrews, ALC
(919) 542-0523
eric@ericandrewsrealtor.com

73 Hillsboro Street (P.O. Box 1400)
Pittsboro, NC 27312
Txt (919) 548-1014



PLANNED DEVELOPMENT DISTRICT
 D.R. 2023 - 1050
 D.S. 2019 - 332
 P.S. 2018 - 333

WITNESS BY ORIGINAL SIGNATURE, LK
 DAY OF _____ 2025.

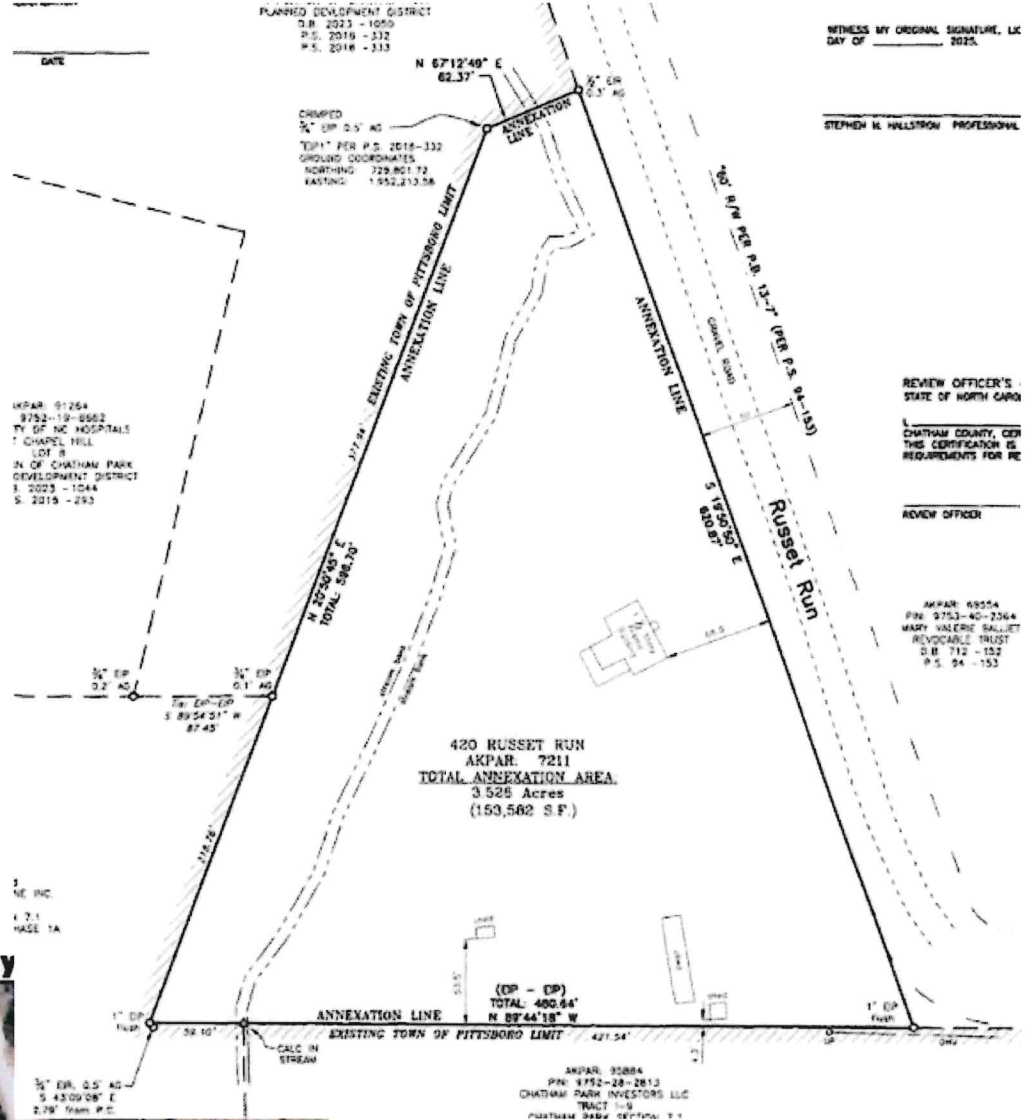
STEPHEN M. HULLSTROM, PROFESSIONAL

REVIEW OFFICER'S
 STATE OF NORTH CAROLINA

CHATHAM COUNTY, OR
 THIS CERTIFICATION IS
 REQUIREMENTS FOR RE

REVIEW OFFICER

AKPAR: 68554
 PIN: 9753-40-2364
 MARY VALERIE SALLIET
 REVOCABLE TRUST
 D.B. 712 - 152
 P.S. 04 - 153



AKPAR: 91264
 P.D. 19-0682
 TY OF NC HOSPITALS
 CHAPEL HILL
 LDF II
 IN. OF CHATHAM PARK
 DEVELOPMENT DISTRICT
 S. 2025 - 1044
 S. 2015 - 293

420 RUSSET RUN
 AKPAR: 7211
 TOTAL ANNEXATION AREA
 3.525 Acres
 (153,562 S.F.)

3
 ME, INC.
 1:2.1
 BASE 1A

(DP - DP)
 TOTAL: 400.64'
 N 89°44'18\" W

AKPAR: 92884
 PIN: 9752-28-2813
 CHATHAM PARK INVESTORS LLC
 TRACT 1-9
 PLATTEN DATA OPTION 1:1

Chatham County

