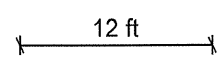
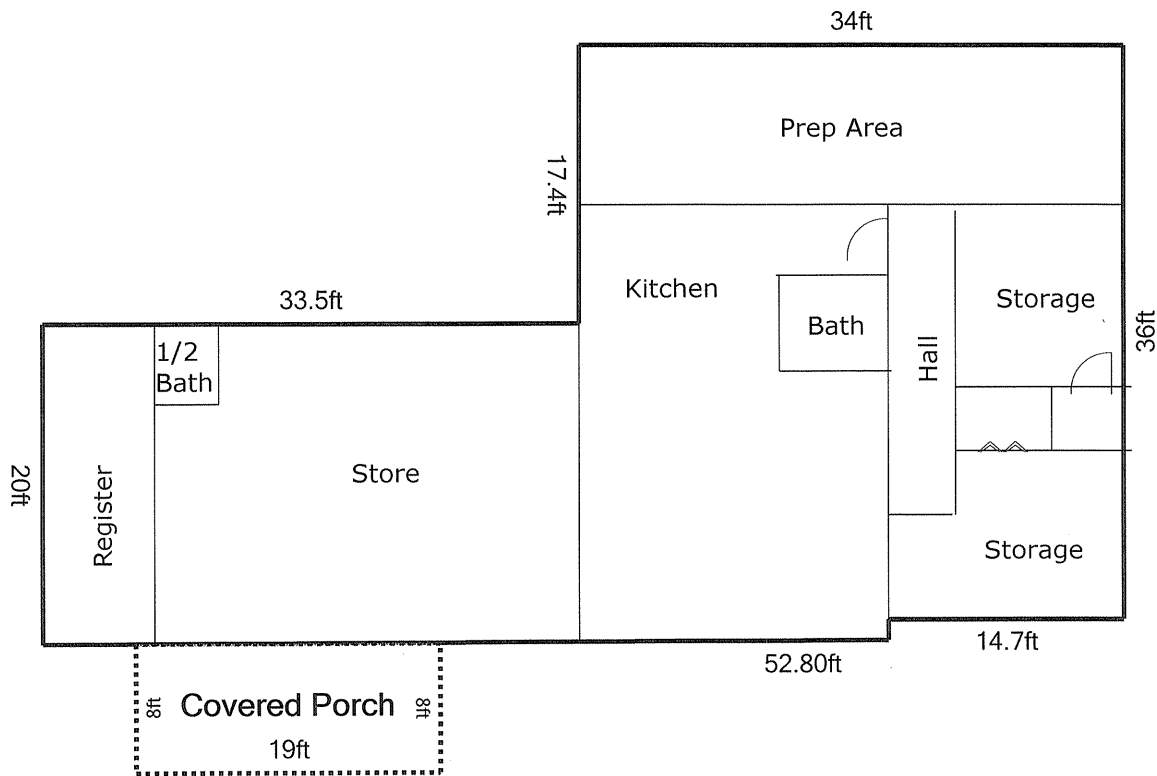


Sketch



Living Area		Area Calculation			
First Floor	1918.38 ft ²	First Floor			x 1.00 = 1918.38 ft ²
Nonliving Area		17.4ft x	34ft x	1.00 =	591.6 ft ²
Covered Porch	152 ft ²	14.7ft x	18.6ft x	1.00 =	273.42 ft ²
		Δ 0.10ft x	52.80ft x	0.50 =	2.64 ft ²
Total Living Area (rounded):	1918 ft²	19.9ft x	52.8ft x	1.00 =	1050.72 ft ²