



## Clover Park Professional Square

Clover Park Professional Square is a stately two-story, multi-tenant professional office building in the heart of Lakewood. Located within minutes of I-5, it is an easy walk to the Lakewood Towne Centre. Excellent visibility from Gravelly Lake Drive. Directory signage is located in the landscaped courtyard, and panel signage hangs overhead along the walkways. A lift at the end of the building makes it accessible. Two upper-floor suites are available in convenient configurations.

### Property Overview

- Service lift for wheelchair accessibility
- Monument signage available
- Ample parking in lighted lot
- Pierce Transit stops directly in front of building
- Walking distance to Lakewood Towne Centre
- Three upper level suites available
- Suite 210 - 878sf
- Suite 203B - 400sf
- Lease Rate: \$22.50/sf/yr
- Tenant pays separately metered power

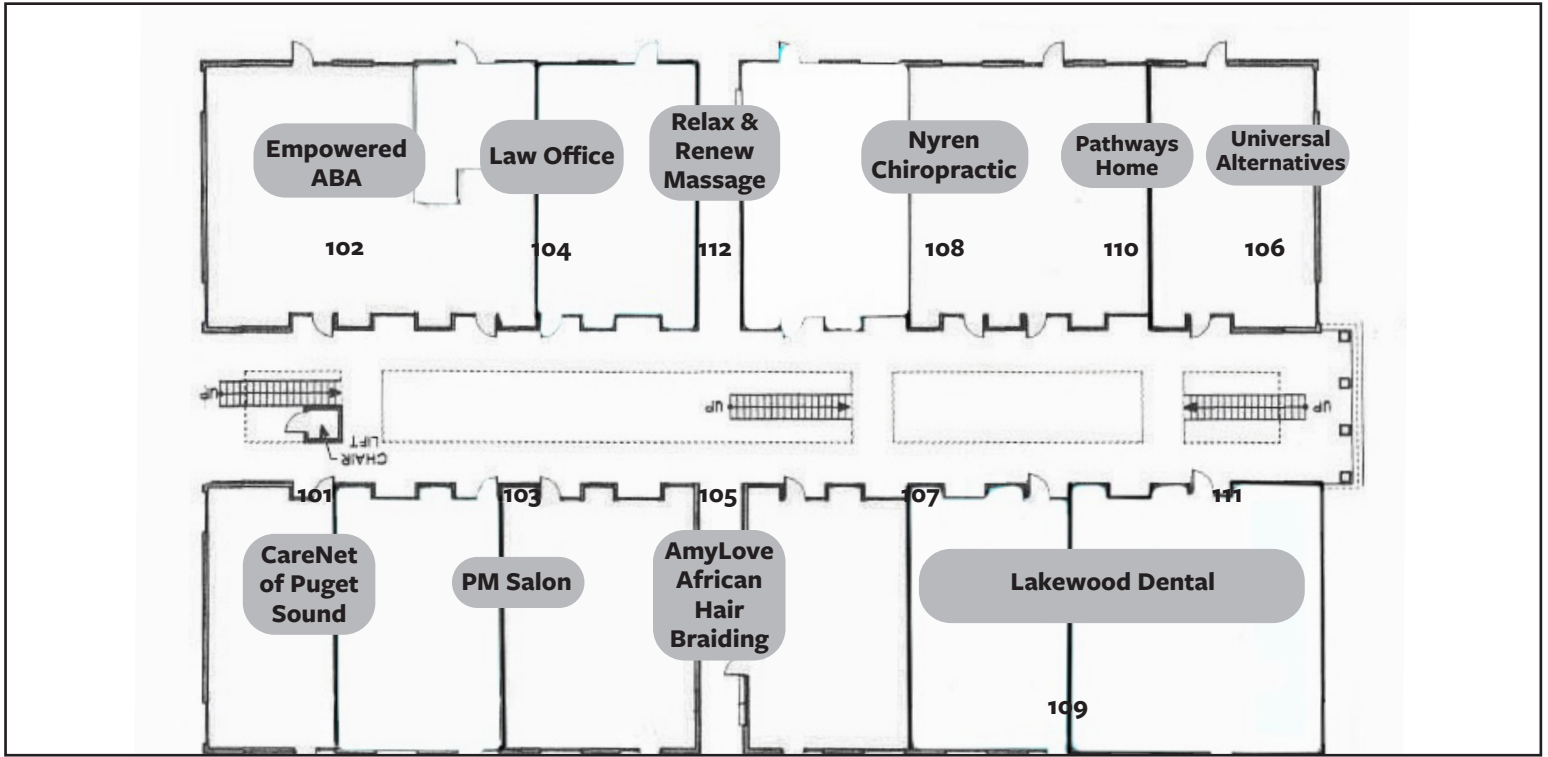
DISCLAIMER: The above information has been secured from sources believed to be reliable, however, no representations are made to its accuracy. Prospective tenants or buyers should consult their professional advisors and conduct their own independent investigation. Properties are subject to change in price and/or availability without notice.



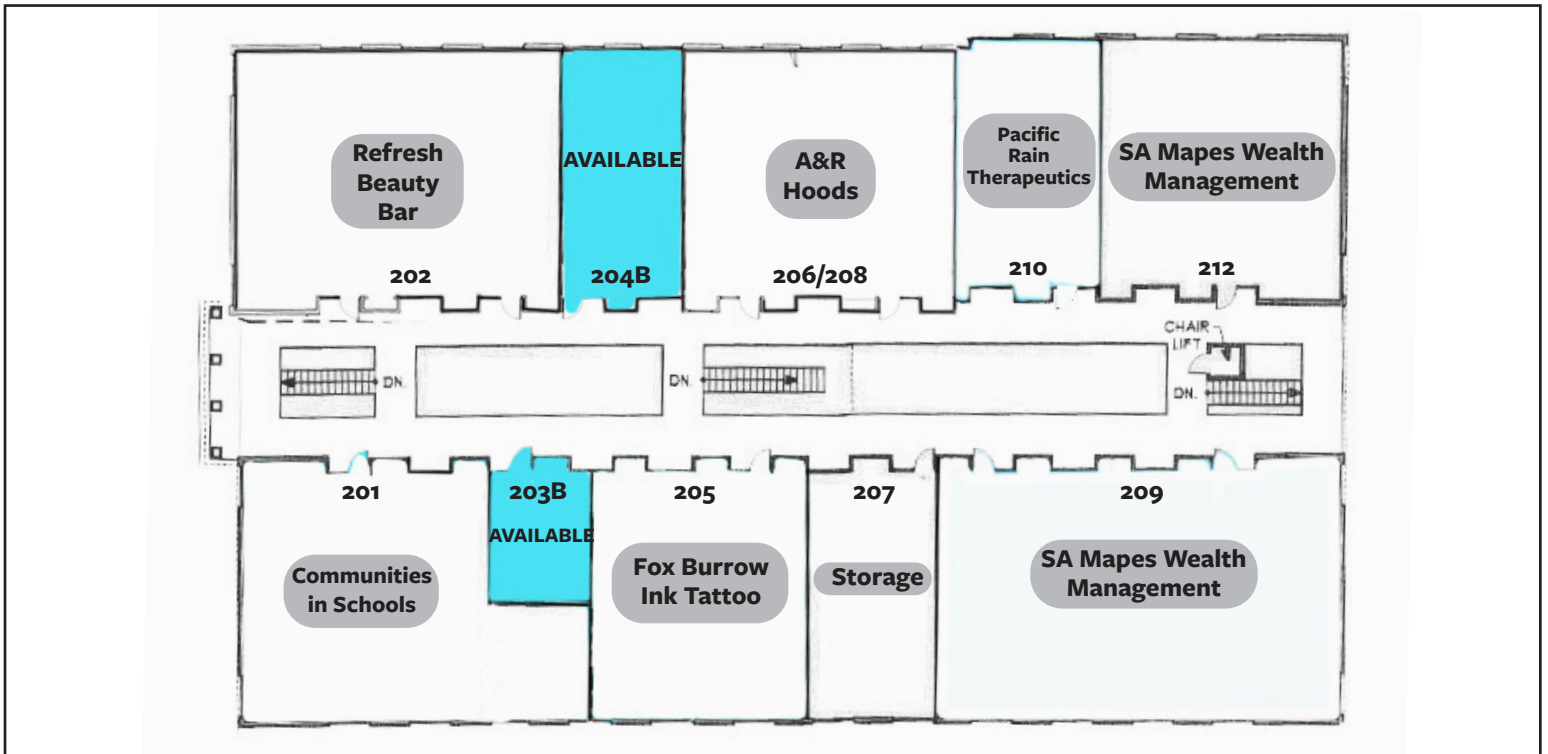


# Retail/Office Space for Lease

## LOWER FLOOR AVAILABILITY

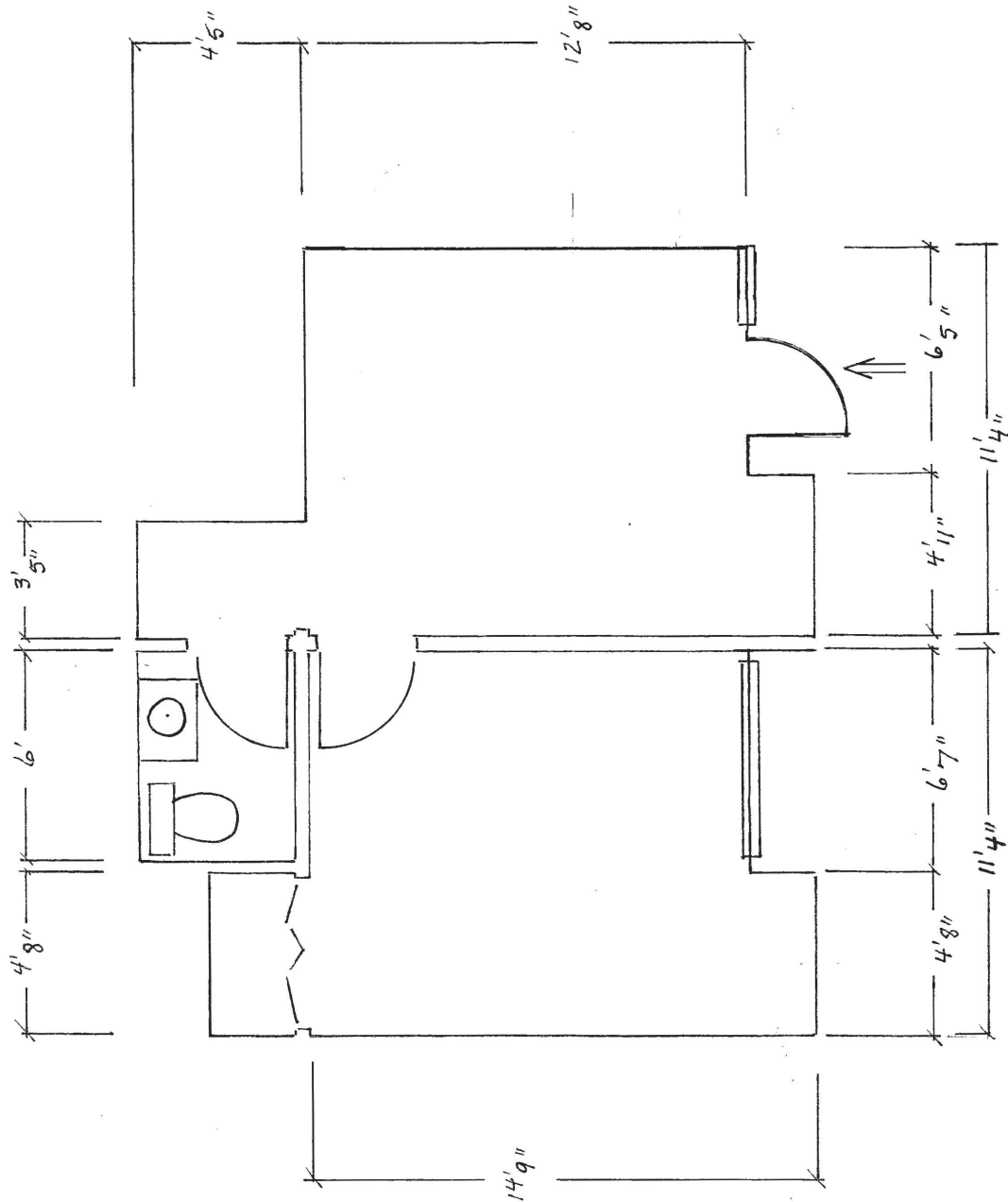


## UPPER FLOOR AVAILABILITY



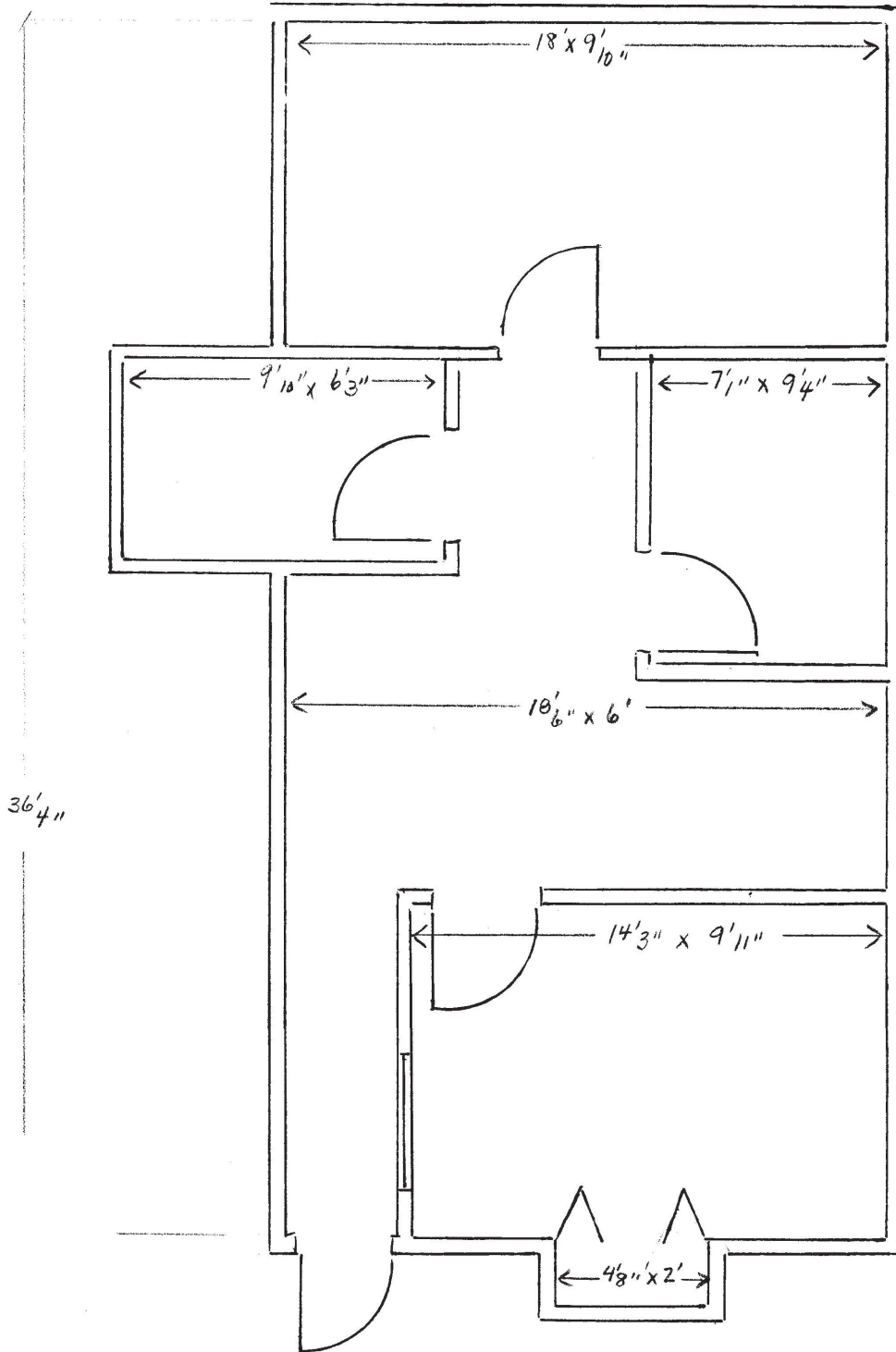


## SUITE 203B - FLOOR PLAN





## SUITE 204B - FLOOR PLAN

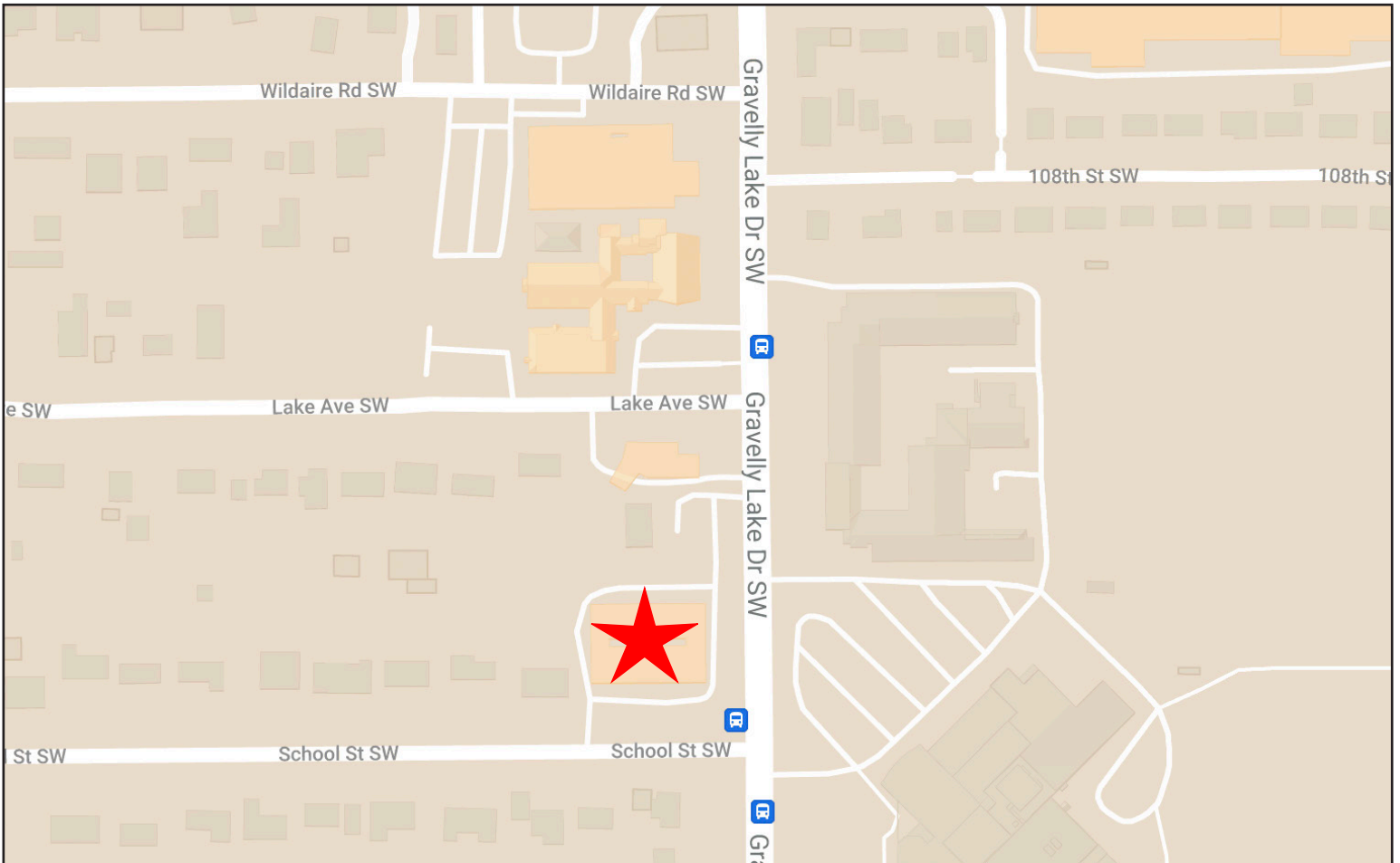




## REGIONAL MAP



## NEIGHBORHOOD MAP



11120 Gravelly Lake Dr SW Ste 2  
Lakewood, Washington 98499  
johnson-commercial.com

**Margot Johnson**  
margot@johnson-commercial.com  
(253) 209-9998