

# FOR LEASE BELTWAY 8 BUSINESS PARK

5829 W SAM HOUSTON PARKWAY N | HOUSTON, TX 77032

**BUILDING 4**

**BUILDING 4**

**BUILDING 5**

**BUILDING 6**

**BUILDING 7**

**BUILDING 8**

**BUILDING 9**

**BUILDING 10**

**BUILDING 11**

**BUILDING 12**

W SAM HOUSTON PKWY N

W SAM HOUSTON PKWY N

**± 3,100 SF**  
**± 3,240 SF**  
**± 3,480 SF**  
**AVAILABLE**



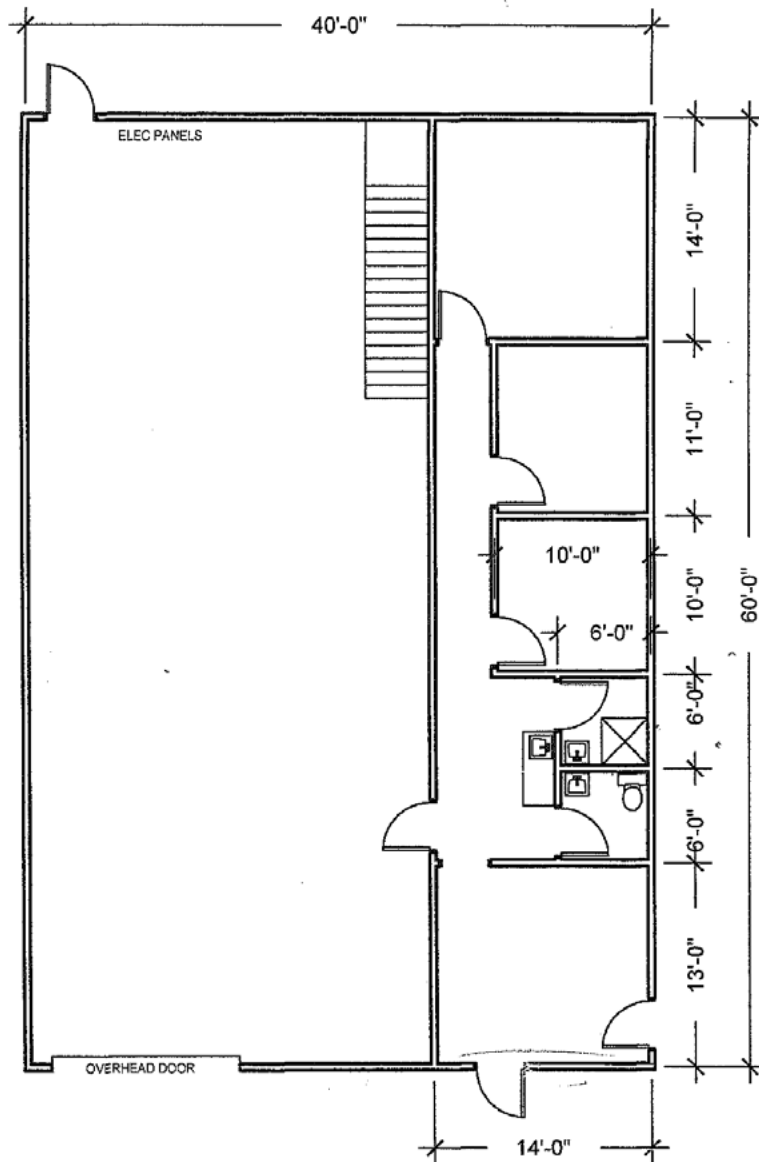
**CUSHMAN &  
WAKEFIELD**



# SPACE HIGHLIGHTS

## SUITE 404

Total Available:	±3,240 SF
1 <sup>st</sup> Floor:	840 SF
Warehouse Area:	1,560 SF
Clear Height:	±18'
Loading:	One (1) 12' x 14' Grade-Level Door
Power:	3 Phase
Access:	Direct Access from Beltway 8



### JOHN KRUSE

Managing Director  
 Direct: +1 281 688 9234  
 Mobile: +1 713 304 4919  
 john.kruse@cushwake.com

### CARTER HOLMES

Director  
 Direct: +1 281 688 9234  
 Mobile: +1 713 304 4919  
 john.kruse@cushwake.com



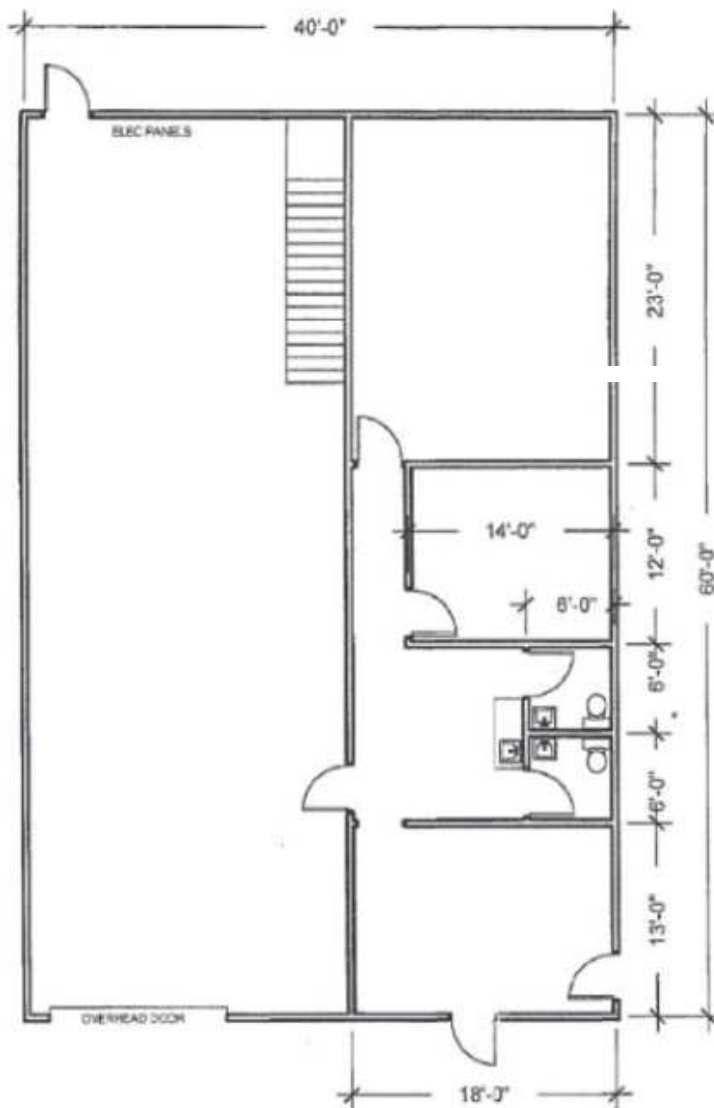
**CUSHMAN & WAKEFIELD**



# SPACE HIGHLIGHTS

## SUITE 406

Total Available:	±3,480 SF
1 <sup>st</sup> Floor:	1,080 SF
Warehouse Area:	1,320 SF
Clear Height:	±18'
Loading:	One (1) 12' x 14' Grade-Level Door
Power:	3 Phase
Access:	Direct Access from Beltway 8



### JOHN KRUSE

Managing Director  
Direct: +1 281 688 9234  
Mobile: +1 713 304 4919  
john.kruse@cushwake.com

### CARTER HOLMES

Director  
Direct: +1 281 688 9234  
Mobile: +1 713 304 4919  
john.kruse@cushwake.com



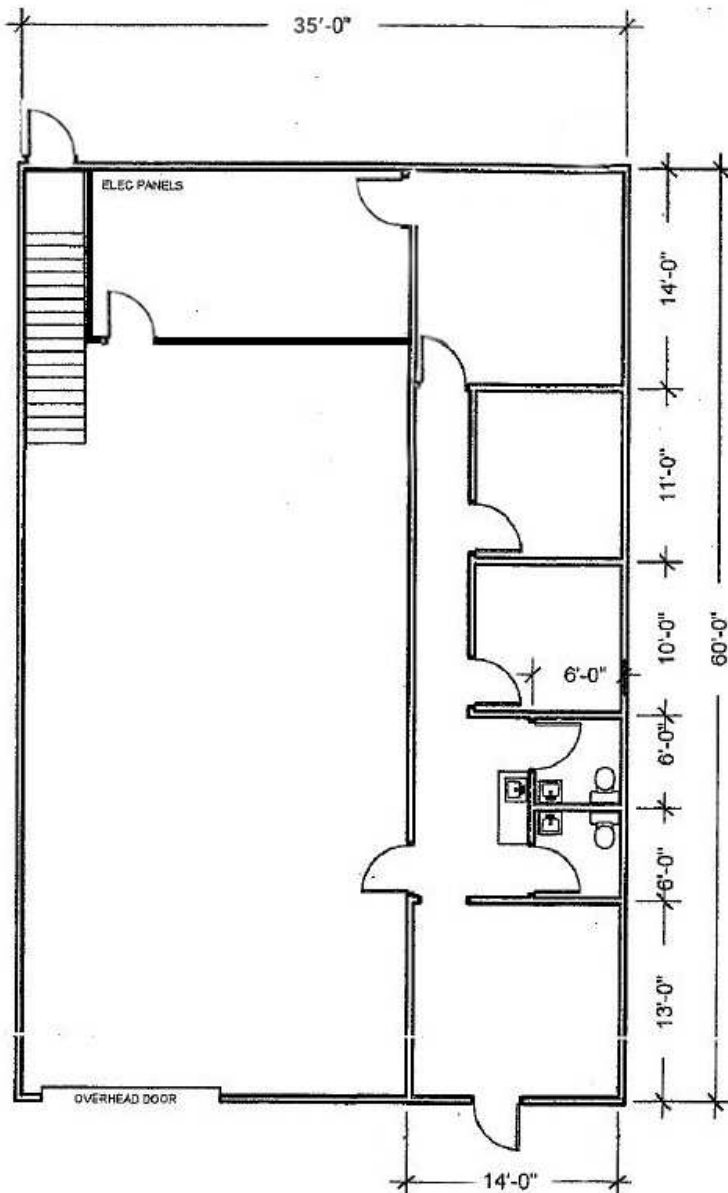
**CUSHMAN & WAKEFIELD**



# SPACE HIGHLIGHTS

## SUITE 409

Total Available:	±3,100 SF
1 <sup>st</sup> Floor Office:	1,000 SF
2 <sup>nd</sup> Floor Mezzanine:	1,000 SF
Warehouse Area:	1,100 SF
Clear Height:	±18'
Loading:	One (1) 12' x 14' Grade-Level Door
Power:	3 Phase
Access:	Direct Access from Beltway 8



### JOHN KRUSE

Managing Director  
 Direct: +1 281 688 9234  
 Mobile: +1 713 304 4919  
[john.kruse@cushwake.com](mailto:john.kruse@cushwake.com)

### CARTER HOLMES

Director  
 Direct: +1 281 688 9234  
 Mobile: +1 713 304 4919  
[john.kruse@cushwake.com](mailto:john.kruse@cushwake.com)



**CUSHMAN & WAKEFIELD**

# FOR LEASE

# BELTWAY 8

# BUSINESS

# PARK

**5829 W SAM HOUSTON PARKWAY N  
HOUSTON, TX 77032**

For more information,  
please contact:

## JOHN KRUSE

Managing Director  
Direct: +1 281 688 9234  
Mobile: +1 713 304 4919  
john.kruse@cushwake.com

## CARTER HOLMES

Director  
Direct: +1 281 688 9234  
Mobile: +1 713 304 4919  
john.kruse@cushwake.com



1330 Post Oak Blvd., Suite 2700  
Houston, TX 77056

[cushmanwakefield.com](http://cushmanwakefield.com)

©2025 Cushman & Wakefield. All rights reserved. The information contained in this communication is strictly confidential. This information has been obtained from sources believed to be reliable but has not been verified. NO WARRANTY OR REPRESENTATION, EXPRESS OR IMPLIED, IS MADE AS TO THE CONDITION OF THE PROPERTY (OR PROPERTIES) REFERENCED HEREIN OR AS TO THE ACCURACY OR COMPLETENESS OF THE INFORMATION CONTAINED HEREIN, AND SAME IS SUBMITTED SUBJECT TO ERRORS, OMISSIONS, CHANGE OF PRICE, RENTAL OR OTHER CONDITIONS, WITHDRAWAL WITHOUT NOTICE, AND TO ANY SPECIAL LISTING CONDITIONS IMPOSED BY THE PROPERTY OWNER(S). ANY PROJECTIONS, OPINIONS OR ESTIMATES ARE SUBJECT TO UNCERTAINTY AND DO NOT SIGNIFY CURRENT OR FUTURE PROPERTY PERFORMANCE.

