



# VALUE INDUSTRIAL PARTNERS, LLC

Industrial Real Estate Investment, Brokerage and Management

477 W. Wrightwood Avenue, Elmhurst, Illinois 60126 TEL: 630-333-1900 FAX: 630-333-1910



**5410 Newport Drive, Unit 35**  
**Rolling Meadows, Illinois**

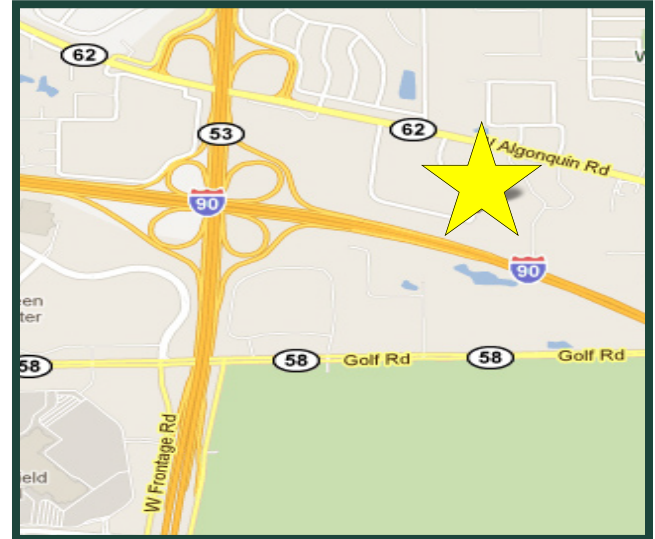
**FOR LEASE**  
**2,626 SF**

### Building Specifications

Available Size:	2,626 Square Feet
Building Size:	157,167 Square Feet
Office Size:	900 Square Feet
Ceiling Height:	12'
Loading:	3 Common Interior Docks 1 Drive-up Ramp
Heat:	Gas
Sprinklers:	Yes
Power:	100 Amps/3 Phase
Taxes:	Included with Current Stop
Operating Expenses:	Included with Current Stop

### Comments

- Professionally owned and managed
- Prime location at Rt. 53 & I-90
- Less than 1 mile to I-90 at Algonquin Road



**For Further Information, Please Contact:**

**Brian P. Gedvilas, Director of Leasing**  
bgedvilas@valueindustrialpartners.com

**Jennifer L. Dobrowolski**  
jdobrowolski@valueindustrialpartners.com

**TEL: 630-333-1900 FAX: 630-333-1910**

Officers of the firm have an ownership interest in this property.  
Submitted subject to error, change in status, or withdrawal without notice.

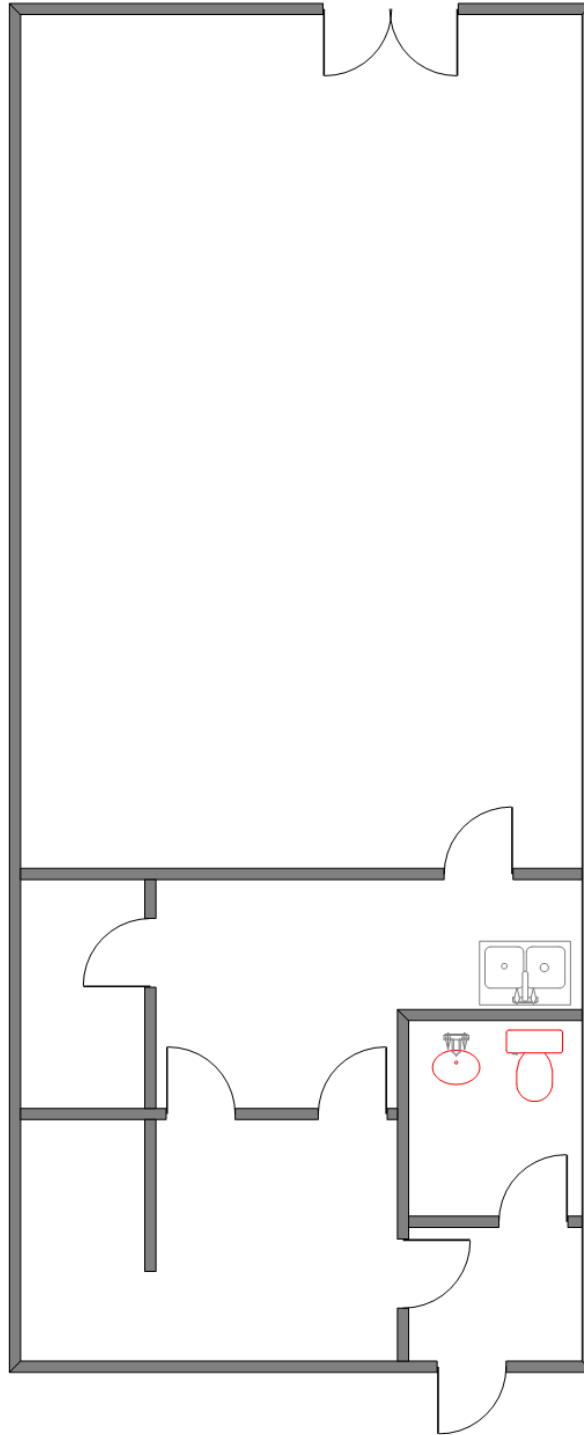


# VALUE INDUSTRIAL PARTNERS, LLC

Industrial Real Estate Investment, Brokerage and Management

477 W. Wrightwood Avenue, Elmhurst, Illinois 60126 TEL: 630-333-1900 FAX: 630-333-1910

## LAYOUT



FOR ILLUSTRATION PURPOSES ONLY.

Officers of the firm have an ownership interest in this property.  
Submitted subject to error, change in status, or withdrawal without notice.