

Century Coale Road Business Park

2151 County Road 220, Angleton, Texas 77515



New Construction Available Summer 2023

A modern industrial development conveniently located south of Houston between Angleton and Lake Jackson. The 9.2 acre complex is comprised of two high quality tilt wall multi-tenant buildings. Move in ready units, with grade level and dock high doors, and rear and front load options. The park has ample car parking and building clear heights from 24' to 32'.

Large spaces with spec move-in ready buildouts.



Century Coale Road Business Park

2151 County Road 220, Angleton, Texas 77515

14 miles to Hwy 36 Regional Transportation Corridor

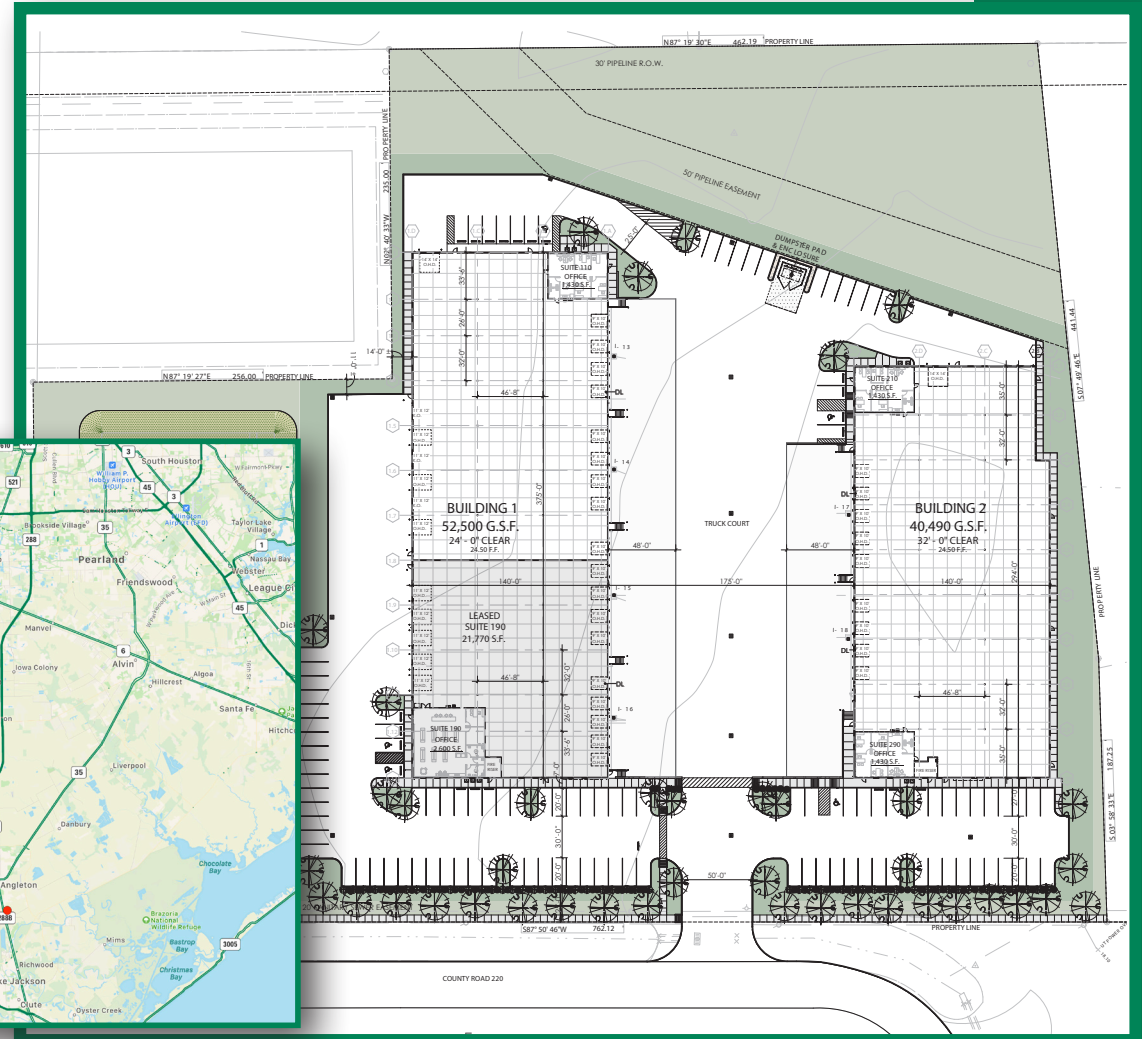
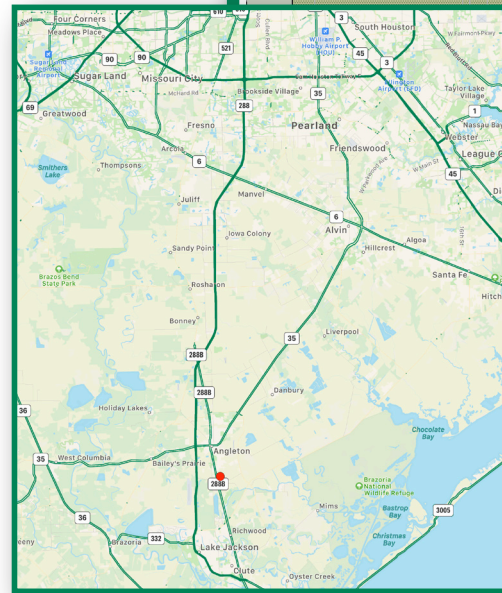
16 miles to Port of Freeport Terminal

30 miles to Houston S. Beltway 8

43 miles to Texas Medical Center

Property Features:

- Tilt wall concrete construction
- Move-in ready offices available
- Front and Rear load, grade level and dock high doors
- 480/230v - 208/120v; 400 Amp Power (Standard)
- Parking Ratio: 1.22 per 1,000 SF
- Clear Height: Building 1, 24 ft
Building 2, 32 ft
- 32' x 46' Bays (Typical)
- Zoning: Industrial
- ESFR Sprinkler System
- Energy Efficient Construction (EEC):
LED Lighting throughout
Solar reflective TPO Roofs
- Owner Built and Managed

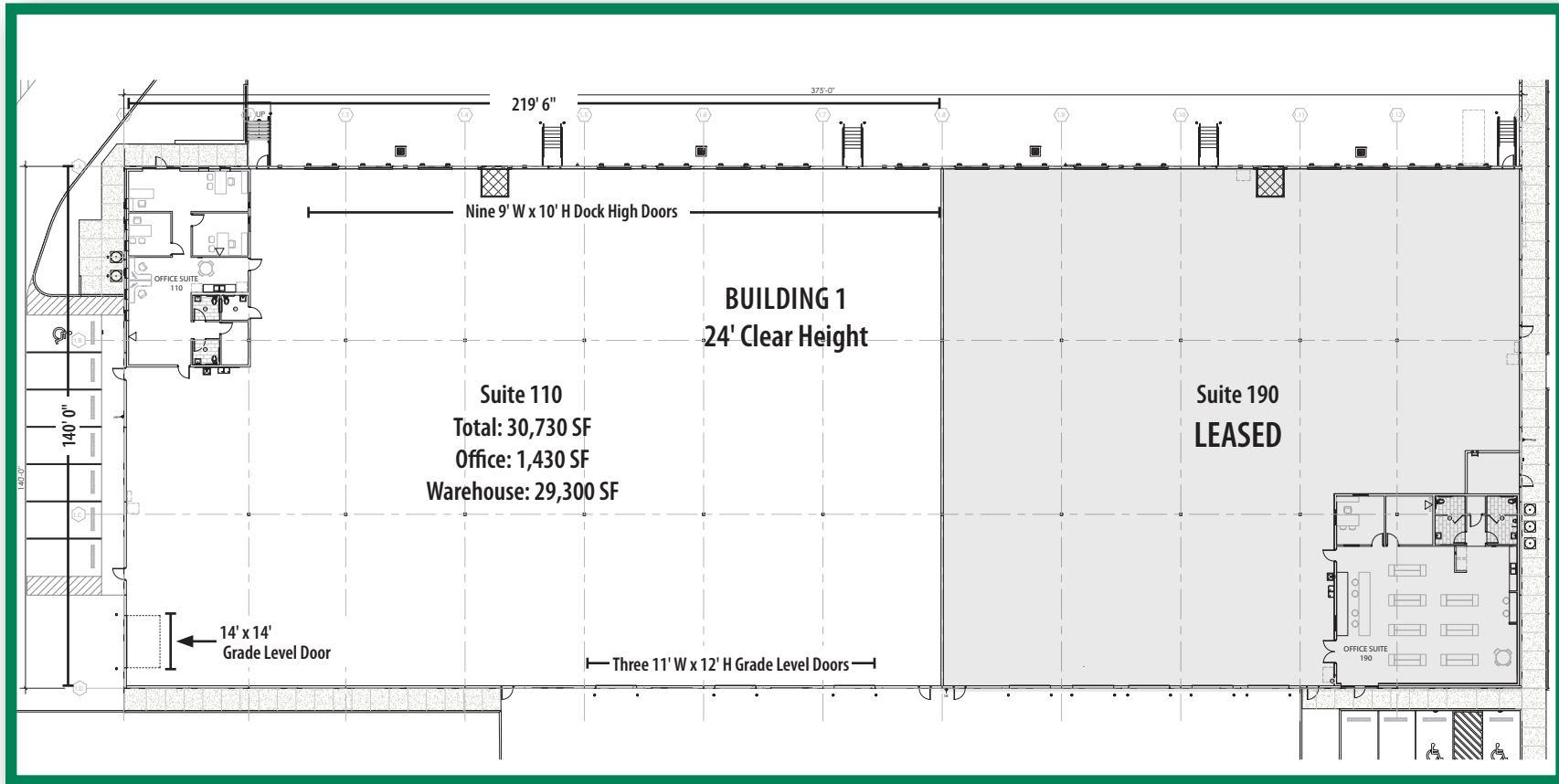


Chance Bearden
Patricia Gassman
Leasing & Marketing

223 Hull Lane,
Sugar Land, Texas 77498
Office: 281.568.4185

Century Coale Road Business Park

2151 County Road 220, Angleton, Texas 77515



Building 1

SUITE 110

Total SF: 30,730

Office SF: 1,430

Warehouse SF: 29,300

Office Space: 1 Open Office

1 Break Room

3 Private Offices

1 men's restroom

1 women's restroom

Clear Height: 24'

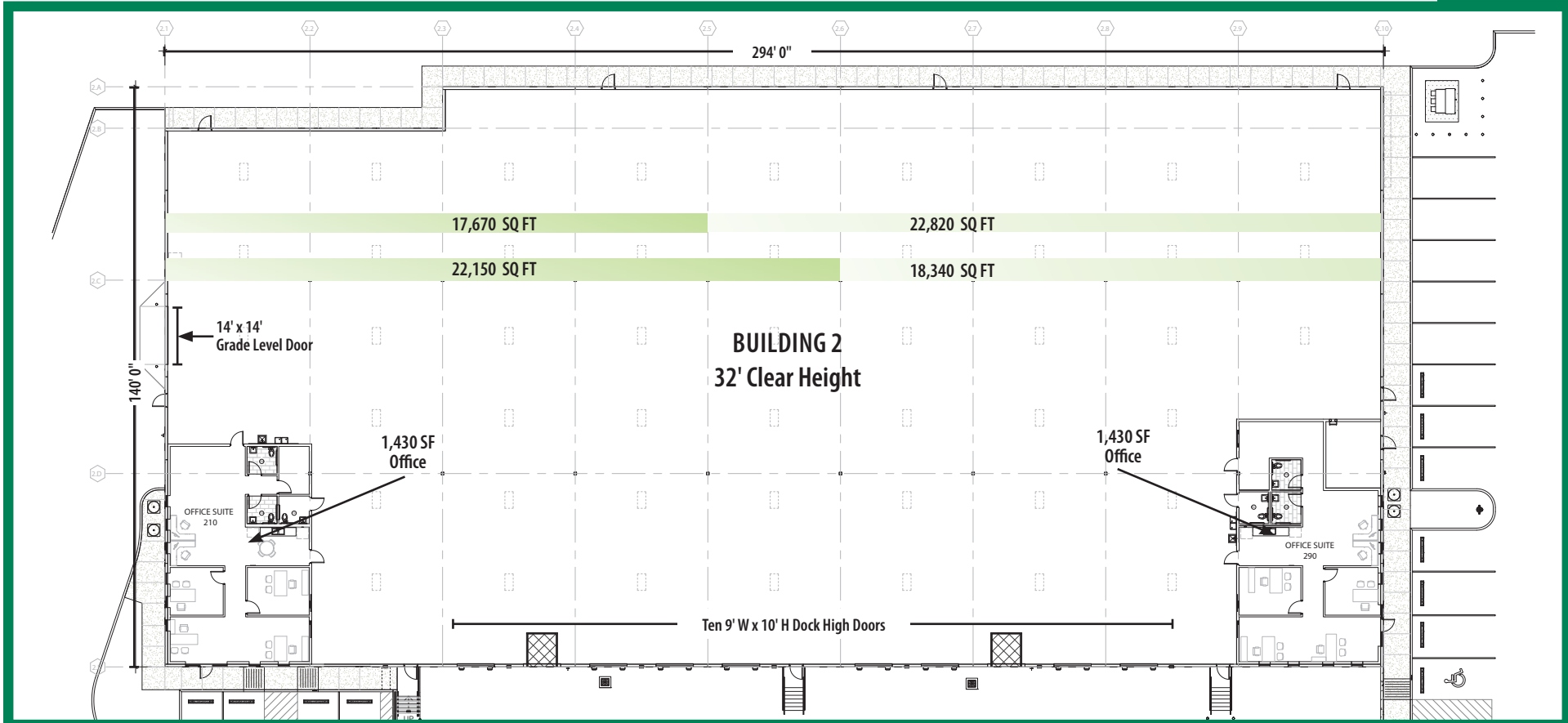
Bay Doors: Nine (9) Dock High 9' W x 10' H

Three (3) Grade Level 11' W x 12' H

One (1) Grade Level 14' x 14'

Century Coale Road Business Park

2151 County Road 220, Angleton, Texas 77515



Building 2

SUITE 290 & SUITE 210

Total SF: 40,490
Office SF: 1,430
Warehouse SF: 37,630
Office Space: 1 Open Office
1 Break Room
3 Private Offices
1 men's restroom
1 women's restroom

Clear Height: 32'
Bay Doors: Ten (10) Dock High 9' W x 10' H
One (1) Grade Level 14' x 14'