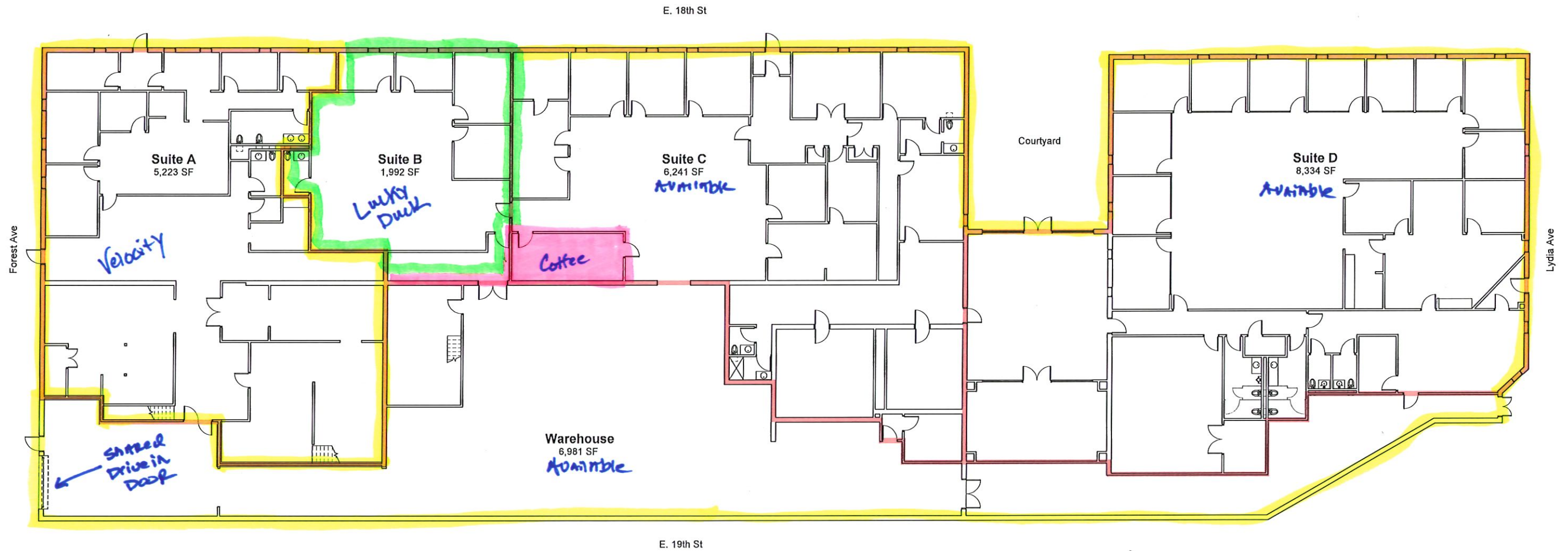


GENERAL NOTES

1. TOTAL BUILDING AREA 26,846 SF
2. TOTAL BUILDING AREA IS MEASURED FROM OUTSIDE FACE OF EXTERIOR WALLS
3. SUITE AREAS ARE MEASURED FROM INSIDE FACE OF EXTERIOR WALL TO CENTERLINE OF DEMISING WALLS
4. ALL SQUARE FOOTAGES ARE APPROXIMATE

+/- 29,656 SF

2 Floor Plan - Mezzanine
1/8" = 1'-0"



1 Floor Plan - Level 1
1/8" = 1'-0"



1205 - 1295 E 18th Street Kansas City, MO 64108