

2200
CABOT



RE
DS | RE Development
Solutions

For more information

Patrick Kiefer

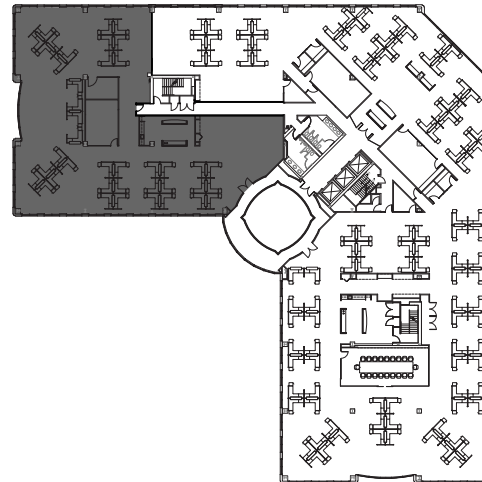
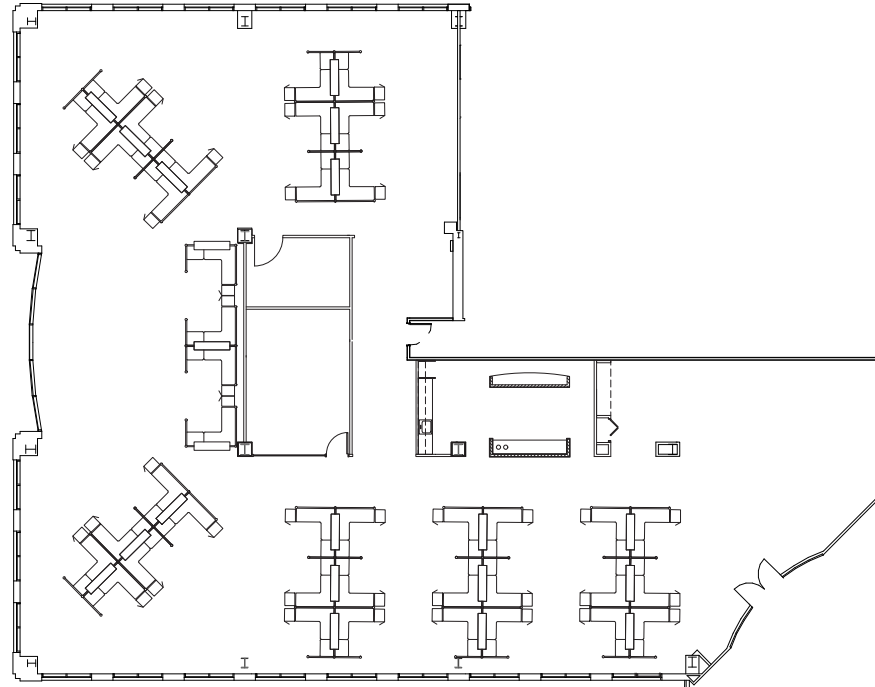
630 693 0670

pkiefer@hiffman.com

NAIHiffman
Commercial Real Estate Services, Worldwide

2nd Floor

9,997 RSF Available
furnished as shown



2200
CABOT



RE
DS | RE Development
Solutions

For more information

Patrick Kiefer

630 693 0670

pkiefer@hiffman.com

NAIHiffman
Commercial Real Estate Services, Worldwide

2nd Floor

9,997 RSF Available

