

OWNER/USER | DEVELOPMENT | INVESTMENT OPPORTUNITY- FOR SALE



Highlights:

- (1) Dock
- (8) Drive-in OH Doors
- Clear Height: 12'-22'
- Power: 3-Phase/240v
- Roof Age: 2004-2016
- HVAC Age: 2002-2017
- Construction Type: Masonry
- Year Built: 1950-2005

Summary:

In-demand owner/user, development, or investment opportunity now available. The property is within close proximity to downtown with quick highway access. The property is located just West of I-95 and North of I-10 making the site an ideal, central location.

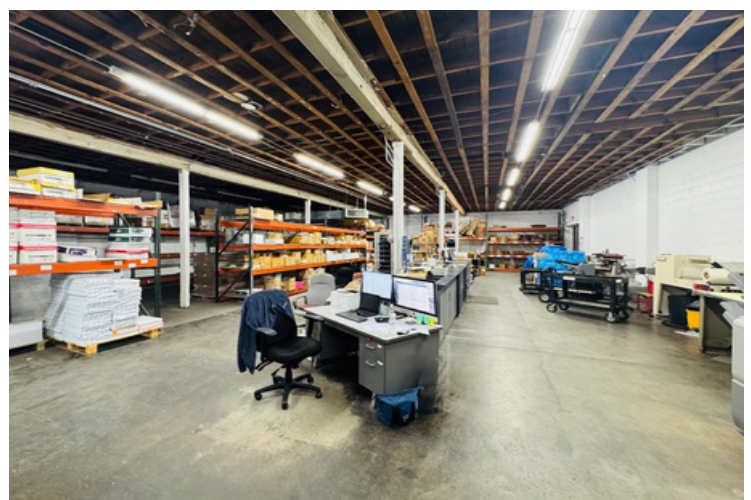
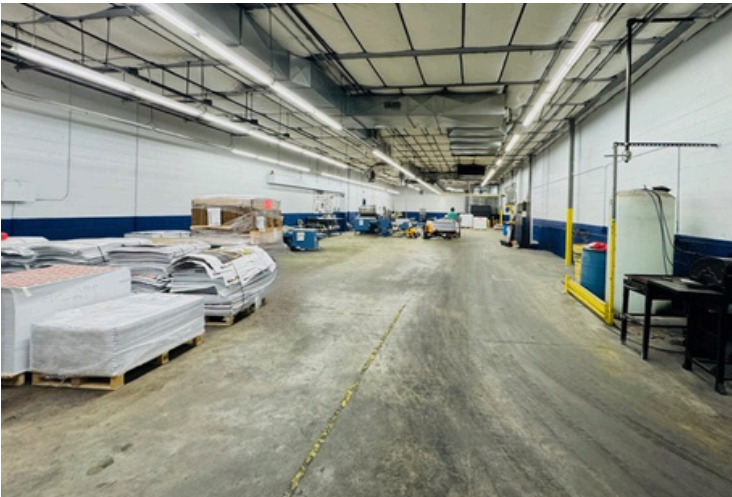
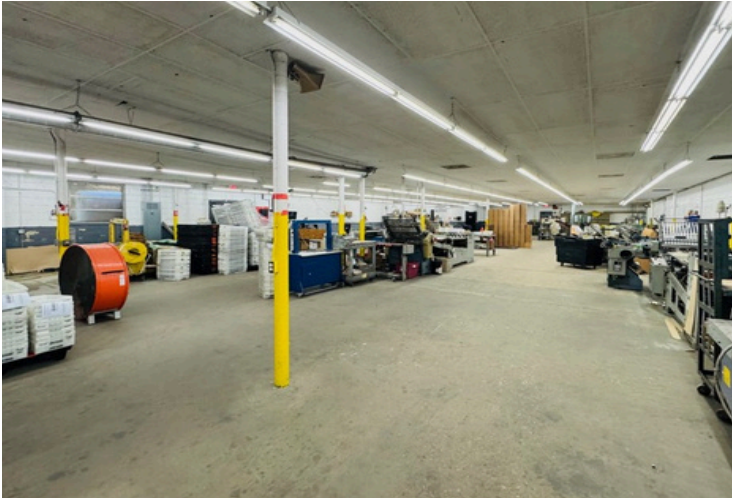
Property Summary:

Asking Price:	\$5,950,000
106 Sewald St.	9,482 SF
2436 Dennis St.	5,408 SF
2472 Dennis St.	29,149 SF
2446 Dennis St.	3,513 SF
Total Building Size:	47,552 SF
Total Lot Size:	2.51 AC
Zoning:	IL (Light Industrial)
Taxes:	\$24,203.05/yr

2436-2472 Dennis St.

Property Photos

VANCAMPCOMMERCIAL.COM

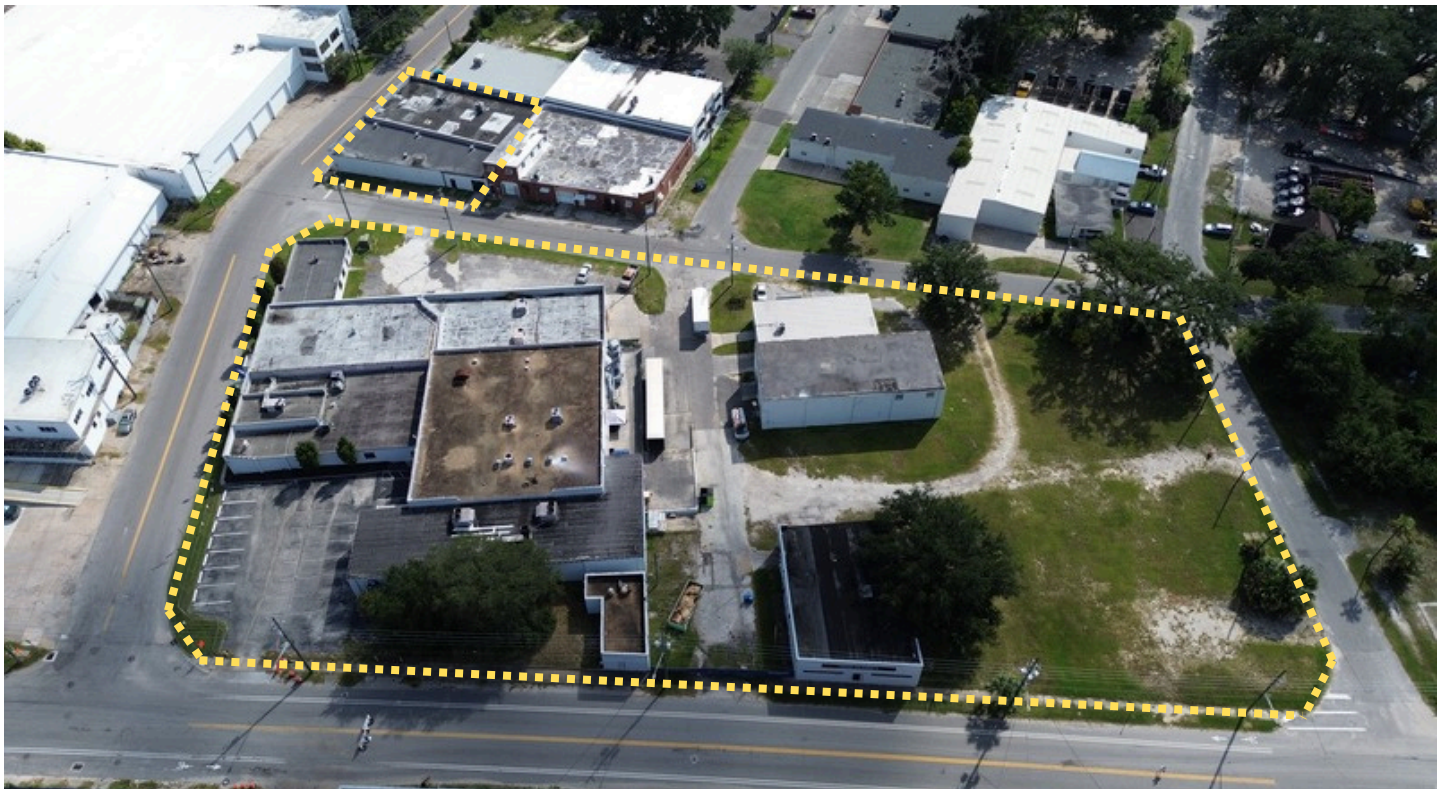


THE INFORMATION CONTAINED HEREIN WAS OBTAINED FROM RELIABLE OUTSIDE SOURCES; VANCAMP COMMERCIAL PROPERTIES MAKES NO GUARANTEES, WARRANTIES OR REPRESENTATIONS AS TO THE COMPLETENESS OR ACCURACY THEREOF. THE PRESENTATION OF THE SUBJECT PROPERTY IS SUBMITTED SUBJECT TO ERRORS, OMISSION, CHANGES OF PRICE, OR CONDITIONS, PRIOR TO SALE OR LEASE, OR WITHDRAWAL WITHOUT NOTICE..

2436-2472 Dennis St.

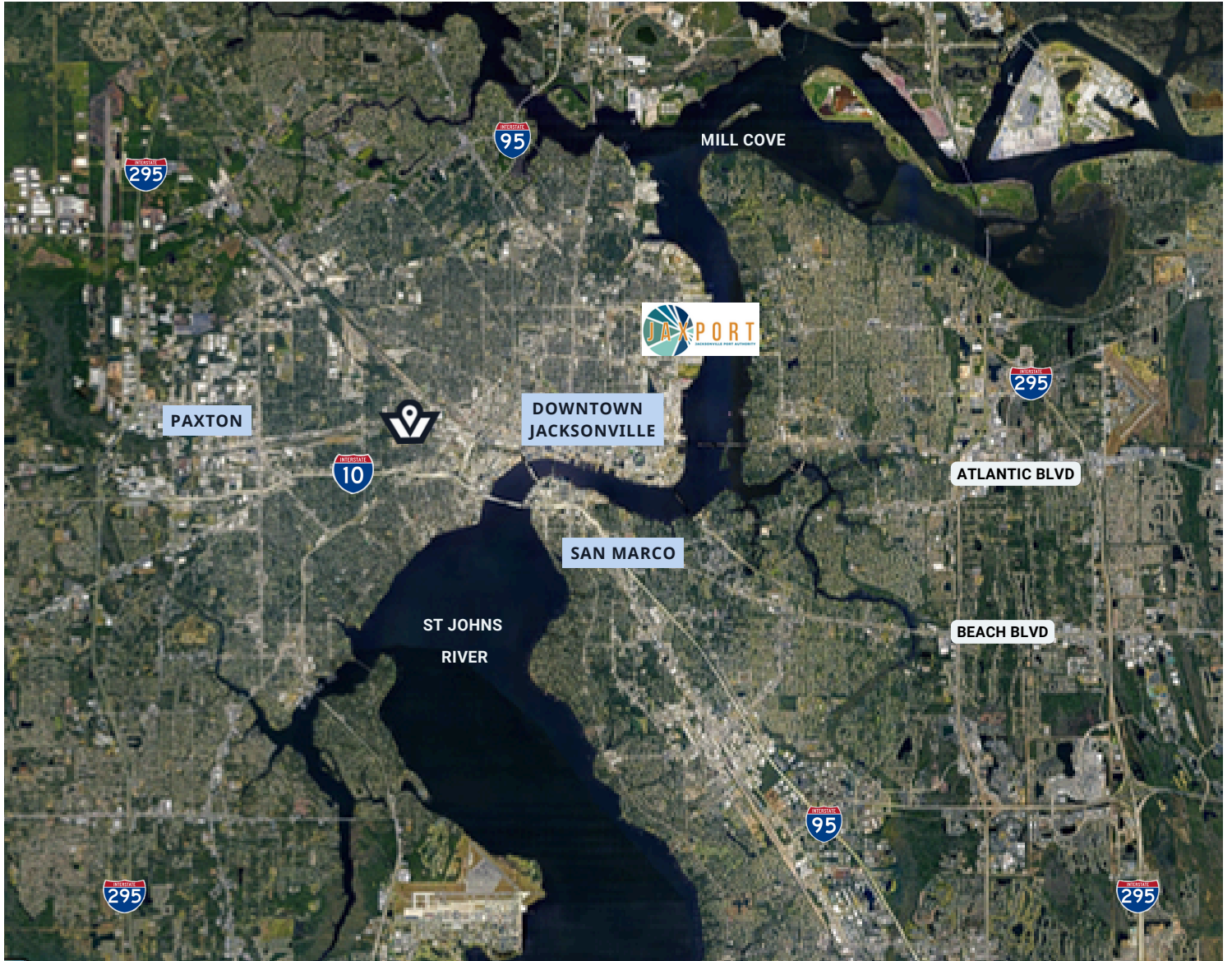
VANCAMPCOMMERCIAL.COM

Aerial Photos



THE INFORMATION CONTAINED HEREIN WAS OBTAINED FROM RELIABLE OUTSIDE SOURCES; VANCAMP COMMERCIAL PROPERTIES MAKES NO GUARANTEES, WARRANTIES OR REPRESENTATIONS AS TO THE COMPLETENESS OR ACCURACY THEREOF. THE PRESENTATION OF THE SUBJECT PROPERTY IS SUBMITTED SUBJECT TO ERRORS, OMISSION, CHANGES OF PRICE, OR CONDITIONS, PRIOR TO SALE OR LEASE, OR WITHDRAWAL WITHOUT NOTICE..

2436-2472 Dennis St. Property Map



Kyle VanCamp
BROKER | OWNER

(904) 604 8189
kyle@vancampcommercial.com

1505 Dennis St., Ste 105
Jacksonville, FL 32204



KYLE@VANCAMPCOMMERCIAL.COM