



OFFICE FOR LEASE | PROSPECTOR SQUARE
PROSPECTOR SQUARE

1960 SEWINDER DRIVE, SUITE 102 & 202 | PARK CITY, UTAH 84060

FOR LEASE **\$25-27.00 PSF NNN**

KATIE WILKING CCIM, MRED
(435) 640-4964
katie@wc-cre.com

SAVANNAH TUFTS
(832) 270-1812
savannah.tufts@bhhsutah.com

BERKSHIRE HATHAWAY | UTAH PROPERTIES
HOMESERVICES

COMMERCIAL DIVISION

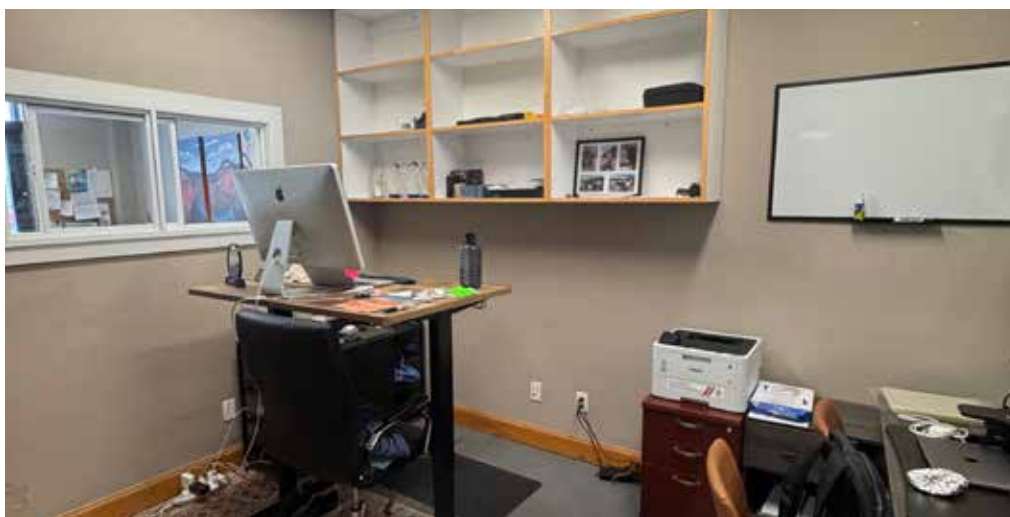
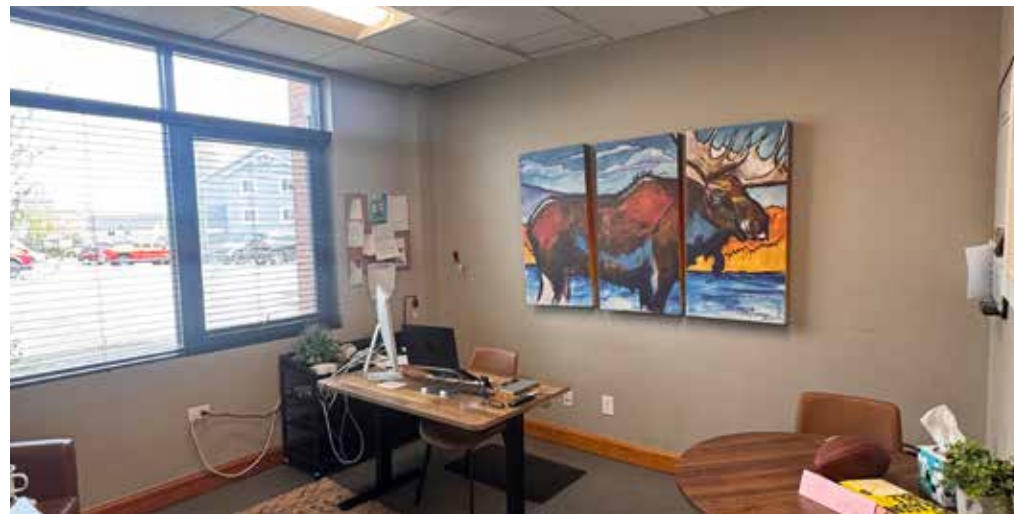
© 2026 BHH Affiliates, LLC. An independently owned and operated franchisee of BHH Affiliates, LLC. Berkshire Hathaway HomeServices and the Berkshire Hathaway HomeServices symbol are registered service marks of Columbia Insurance Company, a Berkshire Hathaway affiliate. Equal Housing Opportunity. Information not verified or guaranteed. Berkshire Hathaway HomeServices and/or its representatives do not warrant or guarantee this information. Information herein was provided by Owner/Seller. Lessee/Purchaser is responsible to confirm any information considered a factor in a decision to lease or purchase.

PROSPECTOR SQUARE 1960 SIDEWINDER DRIVE, SUITE 102 & 202 | PARK CITY, UTAH 84060

- **Suite 102: 1,699 SF**
- **Suite 202: 727 SF**
- **1960 Sidewinder Drive** offers a highly functional and well-located office opportunity in the heart of Prospector Square. Positioned on the ground level for easy access, the suite benefits from strong visibility, convenient parking, and a professional setting ideal for a variety of office users. Surrounded by year-round activity and established businesses, this location provides a balance of accessibility, amenities, and mountain-town appeal.
- **Ground floor suite** with direct, convenient access for clients and employees
- **Efficient layout** suitable for professional office, creative, or service-oriented users
- **Well-maintained building** with a professional tenant environment
- **Ample on-site parking**, a rare luxury in Park City proper
- **Excellent natural light** creating a bright, inviting workspace



PROSPECTOR SQUARE 1960 SIDEWINDER DRIVE, SUITE 102

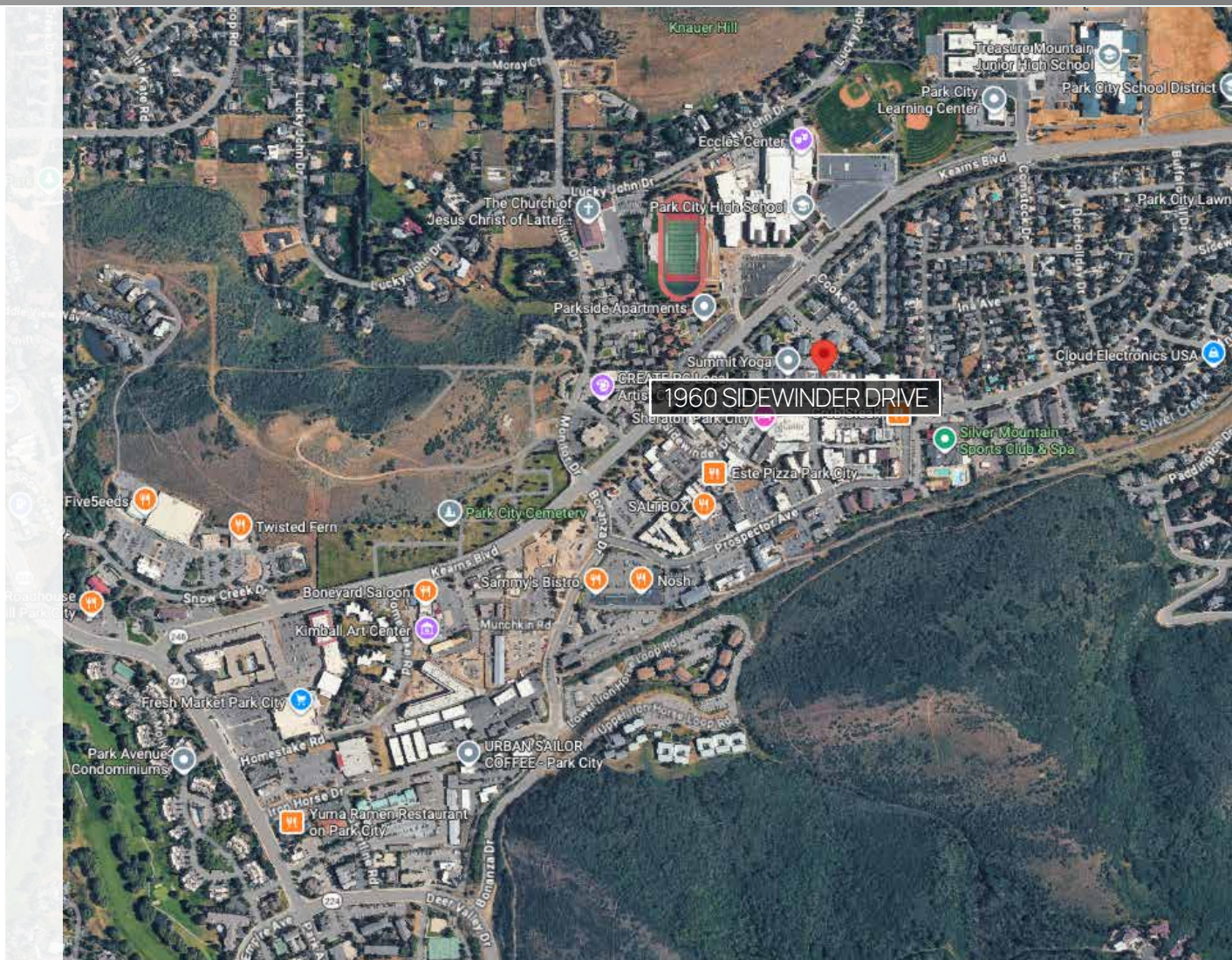


PROSPECTOR SQUARE 1960 SIDEWINDER DRIVE, SUITE 202



PROSPECTOR SQUARE 1960 SIDEWINDER DRIVE, SUITE 102 & 202 | PARK CITY, UTAH 84060

- Located in the core of Prospector Square, one of Park City's most active mixed-use districts
- Immediate access to popular restaurants, coffee shops, retail and trails within walking distance
- Minutes to Historic Main Street and Park City Mountain Resort for client entertainment
- Convenient connectivity to major corridors including Kearns Boulevard and SR-224





FOR MORE INFORMATION OR TO ARRANGE A TOUR:

KATIE WILKING CCIM, MRED

(435) 640-4964

katie@wc-cre.com

SAVANNAH TUFTS

(832) 270-1812

savannah.tufts@bhhsutah.com

**BERKSHIRE
HATHAWAY**
HOMESERVICES

UTAH
PROPERTIES

COMMERCIAL DIVISION

© 2026 BHH Affiliates, LLC. An independently owned and operated franchisee of BHH Affiliates, LLC. Berkshire Hathaway HomeServices and the Berkshire Hathaway HomeServices symbol are registered service marks of Columbia Insurance Company, a Berkshire Hathaway affiliate. Equal Housing Opportunity. Information not verified or guaranteed. Berkshire Hathaway HomeServices and/or its representatives do not warrant or guarantee this information. Information herein was provided by Owner/Seller. Lessee/Purchaser is responsible to confirm any information considered a factor in a decision to lease or purchase.