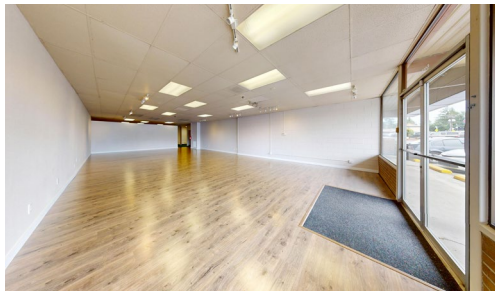




IN-LINE RETAIL OPPORTUNITY WITH FREEWAY EXPOSURE



5113 CAPITOL BLVD SE, TUMWATER, WA | SOUTHGATE SHOPPING CENTER

LISTING INFORMATION

- ▶ An excellent retail location at a main intersection and I-5 Exit 102 with freeway visibility and great on-site parking.
- ▶ Storefront windows, a back stock room, an office, and a restroom.
- ▶ Tenant pays power directly; \$1.39 psf for utilities (w/s/sw/g).
- ▶ Contact listing broker for a list of exclusions.

2,200 SF

\$17.45/SF, +NNN  
(\$3.25/SF)

CBA# 41777111



rants.group/5113CapitolBlvdSvt

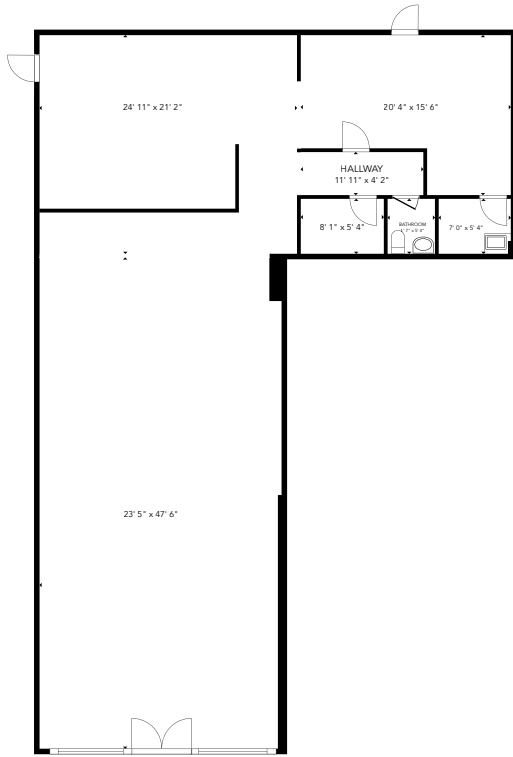
This information, while obtained from sources we deem reliable, is not guaranteed. It is provided without any representation, warranty or guarantee, expressed or implied as to its accuracy. Prospective buyer or tenant should conduct an independent investigation and verification of all matters deemed to be material, including, but not limited to, statements of income and expenses. Consult your attorney, accountant, or other professional advisor.



Carolyn Graden, CCIM  
MANAGING BROKER  
(360) 763-4994  
carolyn@rantsgroup.com

360-943-8060  
RANTSGROUP.com

5113 CAPITOL BLVD SE, TUMWATER, WA | SOUTHGATE SHOPPING CENTER



N

THIS FLOORPLAN IS NOT TO SCALE  
SIZES AND DIMENSIONS ARE APPROXIMATE, ACTUAL MAY VARY.



## CONTACT

**Carolyn Graden, ccim**  
MANAGING BROKER  
(360) 763-4994  
carolyn@rantsgroup.com



rants.group/5113CapitolBlvdSvt

This information, while obtained from sources we deem reliable, is not guaranteed. It is provided without any representation, warranty or guarantee, expressed or implied as to its accuracy. Prospective buyer or tenant should conduct an independent investigation and verification of all matters deemed to be material, including, but not limited to, statements of income and expenses. Consult your attorney, accountant, or other professional advisor.

360-943-8060 | RANTSGROUP.com