

West Hempstead, NY

RIPCO
RETAIL LEASING

116-130 Hempstead Turnpike

For Lease



| 1,850 SF

Directly across from the newly developed Heritage Westminster with 428 residences

Contact
Exclusive Agents

Jason Sobel
jsobel@ripcony.com | 516.342.8290

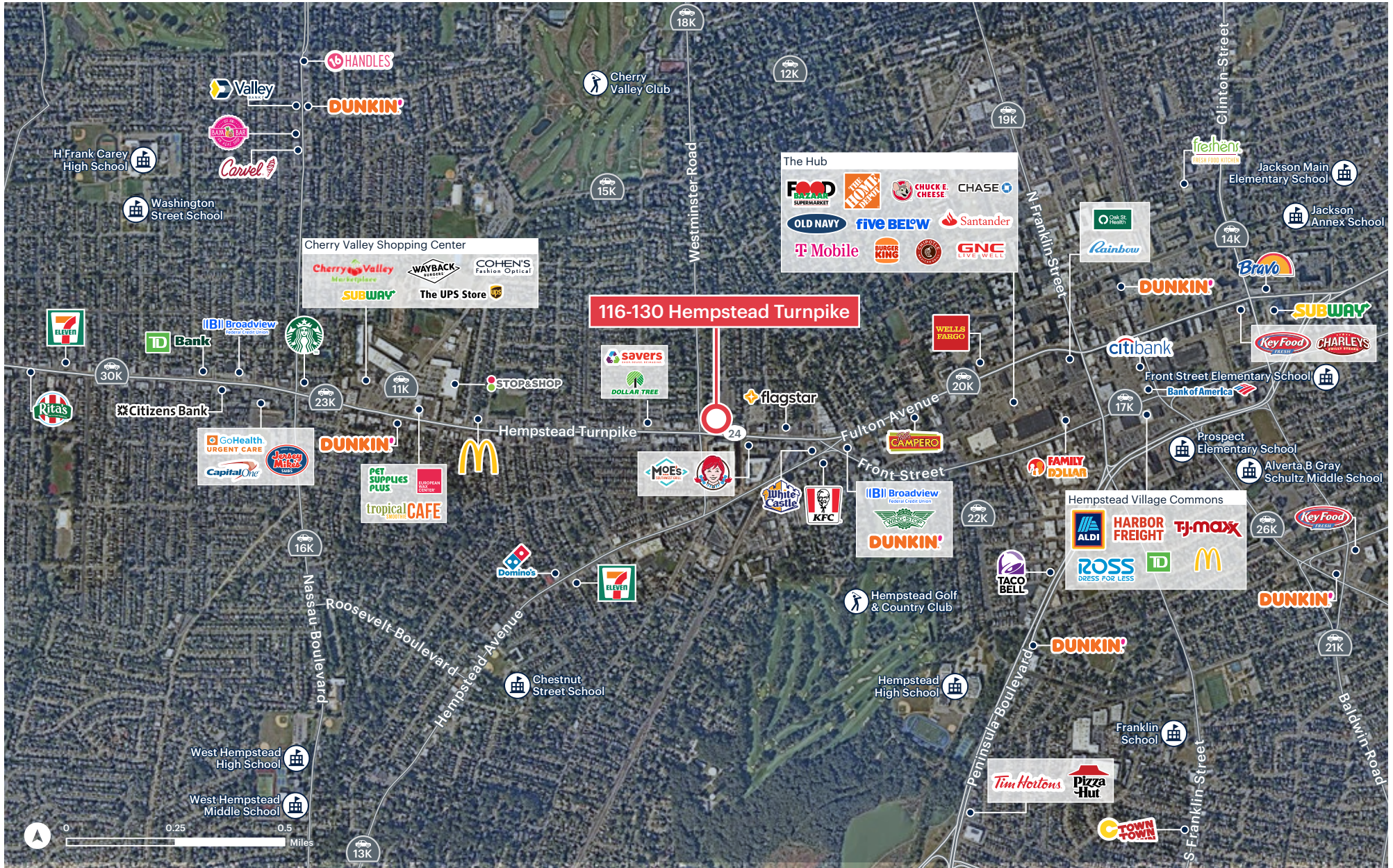
Sydney Schmitt
sschmitt@ripcony.com | 516.933.8880

Space Details

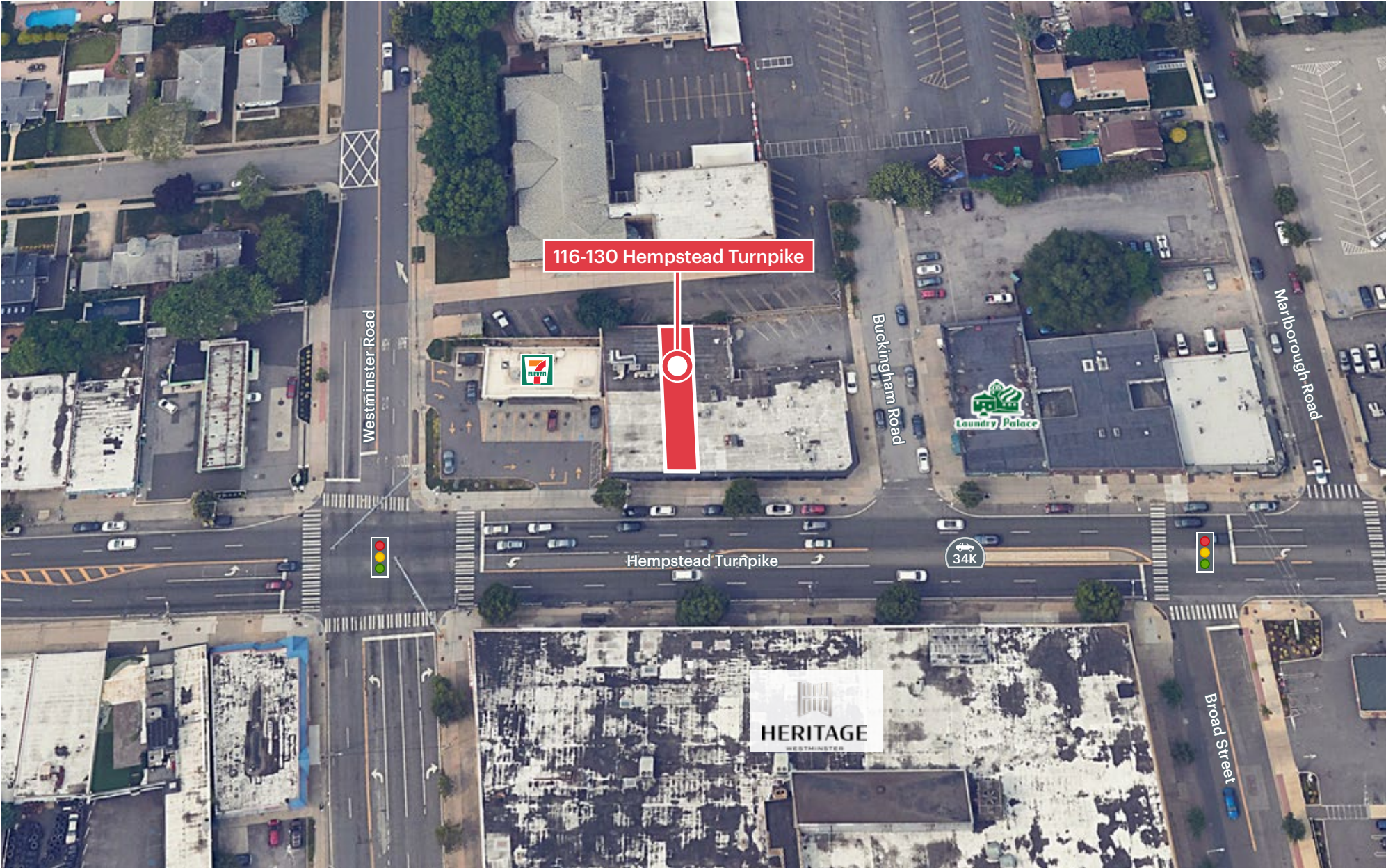


Size	1,850 SF
Rent	Upon request
Comments	Directly across from the newly developed Heritage Westminster, with 428 residences. Located on heavily traveled Hempstead Turnpike with 34,000 vehicles per day. Private rear parking available.
Neighbors	7-Eleven, Savers, Dollar Tree, Moe's Southwest Grill, Wendy's, Flagstar Bank, Stop & Shop, Cherry Valley Marketplace, Subway, Wayback Burgers, Cohen's Fashion Optical, Pet Supplies Plus, European Wax Center, Tropical Smoothie

Area Retail

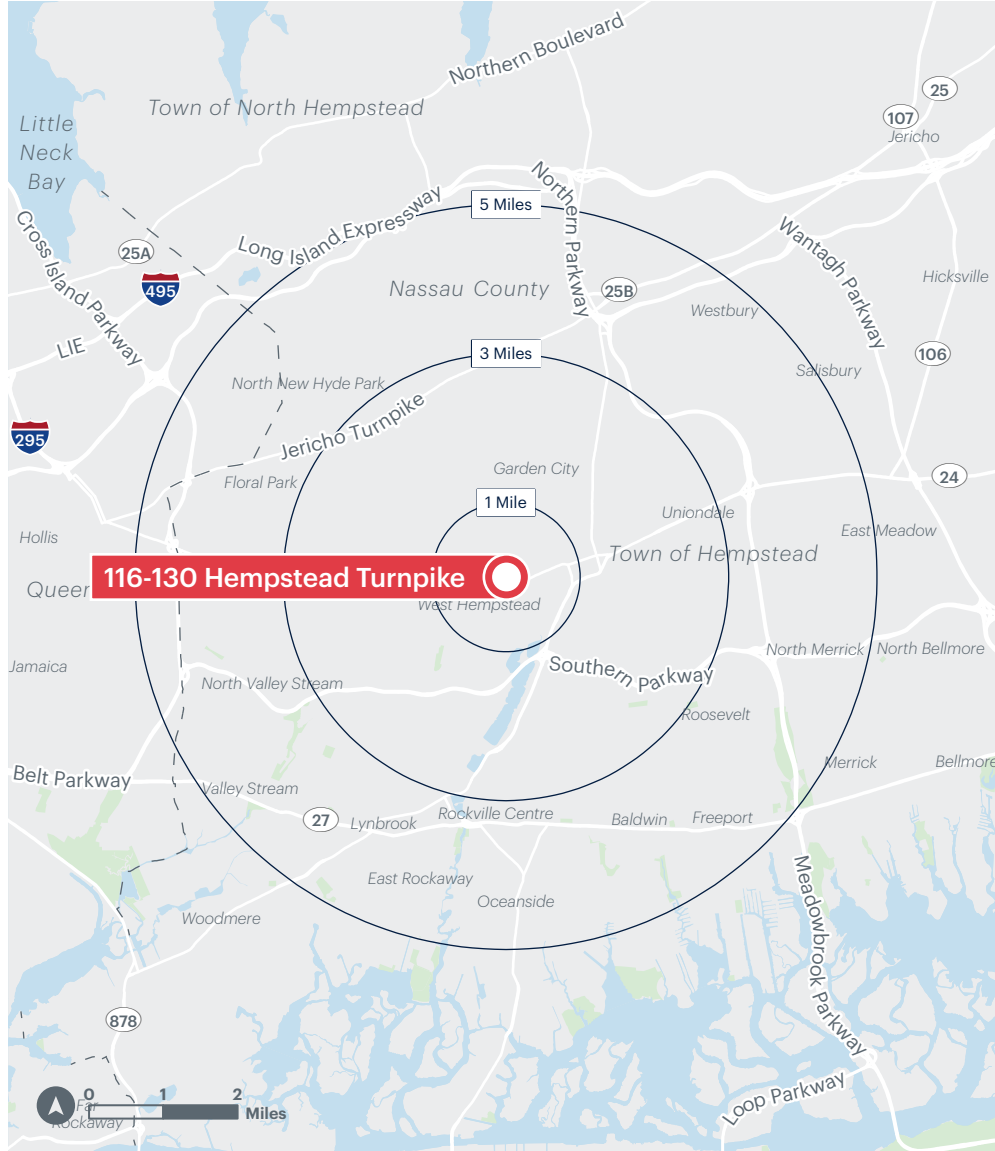


Area Retail



Area Demographics

2025 ESRI Summary Report



	1 mile	3 miles	5 miles
Total Population	23,297	245,876	668,877
Total Households	7,790	75,088	213,330
Average Household Income	\$139,108	\$172,707	\$171,470
Median Household Income	\$109,282	\$135,868	\$137,310
% Population with Bachelors +	40.57%	43.18%	44.91%
Daytime Population	24,232	232,876	631,807
Total Daytime Employees	12,148	111,140	301,281
Total Businesses	1,335	9,536	26,019