

Penta Pacific Properties

9500 Norwalk Blvd Santa Fe Springs, CA 90670 | 562-699-1922

Available Acres 2.31

Land For Lease

Available SF 100,824



Address: 12027 Greenstone Ave, Santa Fe Springs, CA 90670

Cross Streets: Greenstone Ave/Sunshine Ave

±2.30 Acre Truck Yard
 6,994 SF Truck Service Facility
 786 SF Office Building
 Approved For Truck & Trailer Parking Storage
 Short Term Thru Q1 2027

Lease Rate/Mo:	\$45,371	Available Acres:	2.31 Ac	Gas:	Yes	Specific Use:	Industrial
Lease Rate/SF:	\$0.45	Available SF:	100,824 SF	Water:	Yes	Zoning:	M-2
Lease Type:	Gross	Building SF:	0 SF	Sewer:	Yes	Rail Service:	No
Lease Terms:	6-9 Months	Yard:	Fenced / Paved	Electric:	Yes	Market Area:	MidCounties
Sale Price/SF:	NFS			Fiber:	Yes	APN:	8026-020-074,8026-020-075
Sale Price:	NFS						

Listing Company: Penta Pacific Properties
Agents: [Douglas Wells 562-908-6012](#), [Paul R. Hesse 949-633-0860](#), [Greg Jenkins 562-618-9440](#)

Listing #: 69d42086e97a84541f64f418 **Listing Date:** 04/06/2026 **FTCF:** CB400N000S000

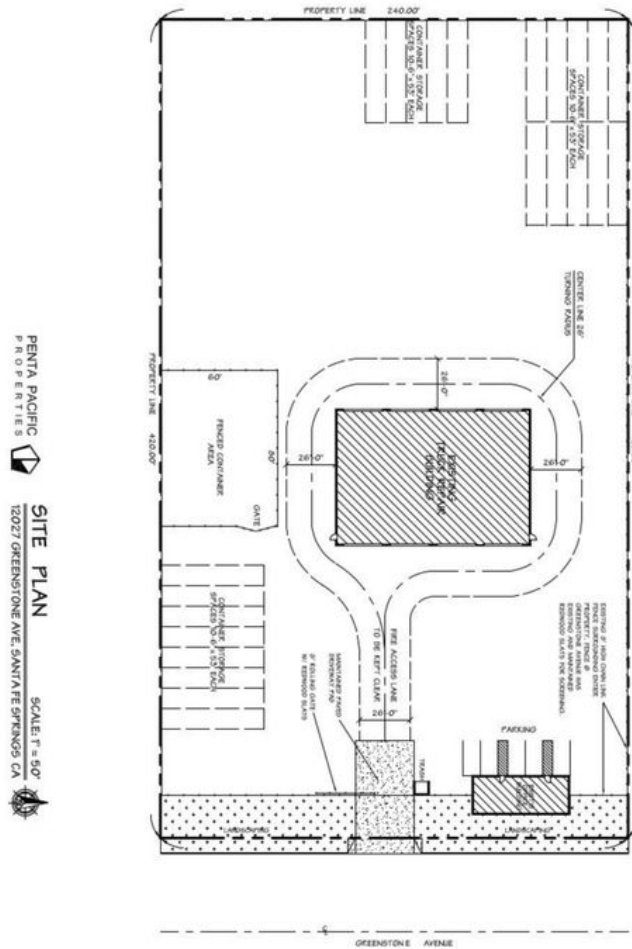
Notes: Contact broker for touring instructions (alarm).

My Report



Penta Pacific Properties

9500 Norwalk Blvd, Santa Fe Springs, CA 90670 | 562-699-1922



PENTA PACIFIC PROPERTIES
SITE PLAN
 SCALE: 1" = 50'
 12027 GREENSTONE AVE, SANTA FE SPRINGS, CA



Douglas Wells
 doug@pentapacific.com
 562-908-6012



3/30/2026

This information supplied herein is from sources we deem reliable. It is provided without any representation, warranty or guarantee, expressed or implied as to its accuracy. Prospective Buyer or Tenant should conduct an independent investigation and verification of all matters deemed to be material, including, but not limited to, statements of income and expenses. Consult your attorney, accountant, or other prof. advisor.