



### PROPERTY DETAILS

<b>ELECTRIC CHARGES:</b>	Billed by LL
<b>ZONING:</b>	BMX-3
<b>ELEVATOR ACCESS:</b>	5am to 7pm
<b>AC HOURS:</b>	6am to 7pm M-F

### PROPERTY HIGHLIGHTS

- Easily accessible via multiple entry points, convenient to public transportation
- On-site parking
- Conveniently located between Downtown Honolulu and Ala Moana

#### **KEITH R. GURNEY (B)**

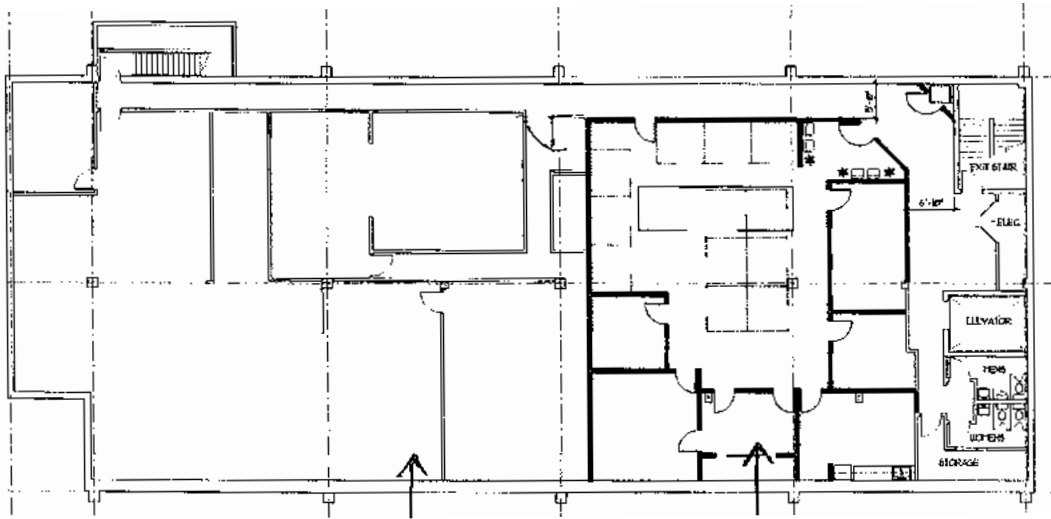
Real Estate Advisor  
+1 808 396 8788  
kgurney@chaneybrooks.com

#### **IAN MONTGOMERY (S)**

Real Estate Advisor  
+1 808 421 8778  
imontgomery@chaneybrooks.com

1440 Kapiolani Boulevard, Suite 1010  
Honolulu, HI 96814 | USA  
Main +1 808 544 1600  
Fax +1 808 544 9574  
[cushmanwakefield.com](http://cushmanwakefield.com) | [chaneybrooks.com](http://chaneybrooks.com)

**SITE PLAN**



**SPACE DETAILS**

<b>SIZE:</b>	~3,020 SF
<b>ASKING BASE RENT:</b>	\$1.25/SF/Mo (Negotiable)
<b>CAM (2026):</b>	\$0.82/SF/Mo
<b>TERM:</b>	3-5 Years
<b>PARKING:</b>	8 Stalls at \$125/Mo plus GET

**SPACE HIGHLIGHTS**

- Open Work area
- Suitable to small-medium back office use
- Kitchenette
- Private office(s)
- Reception area
- Open floor layout
- Electric/AC billed separately

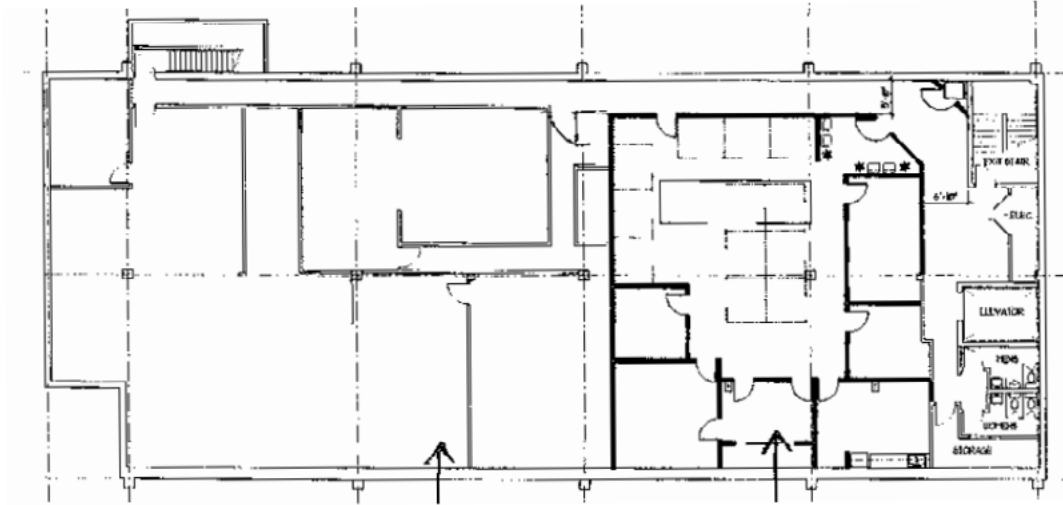


**KEITH R. GURNEY (B)**  
Real Estate Advisor  
+1 808 396 8788  
kgurney@chaneybrooks.com

**IAN MONTGOMERY (S)**  
Real Estate Advisor  
+1 808 421 8778  
imontgomery@chaneybrooks.com

1440 Kapiolani Boulevard, Suite 1010  
Honolulu, HI 96814 | USA  
Main +1 808 544 1600  
Fax +1 808 544 9574  
[cushmanwakefield.com](http://cushmanwakefield.com) | [chaneybrooks.com](http://chaneybrooks.com)

**SITE PLAN**



**SPACE DETAILS**

<b>SIZE:</b>	5,555 SF
<b>ASKING BASE RENT:</b>	\$1.25/SF/Mo (Negotiable)
<b>CAM (2026):</b>	\$0.82/SF/Mo
<b>TERM:</b>	3-5 Years
<b>PARKING:</b>	Negotiable

**SPACE HIGHLIGHTS**

- 7 offices
- 2 large conference rooms
- Kitchenette
- Storage
- Turn key

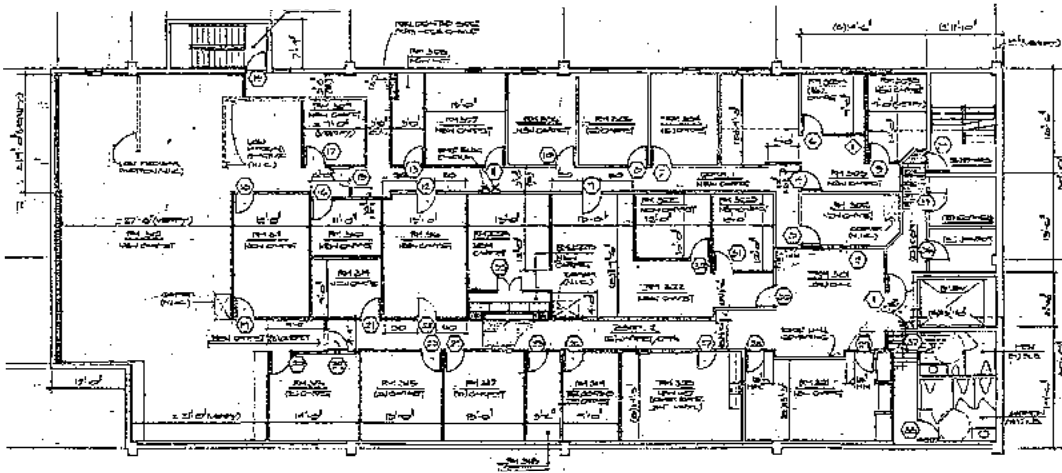


**KEITH R. GURNEY (B)**  
Real Estate Advisor  
+1 808 396 8788  
kgurney@chaneybrooks.com

**IAN MONTGOMERY (S)**  
Real Estate Advisor  
+1 808 421 8778  
imontgomery@chaneybrooks.com

1440 Kapiolani Boulevard, Suite 1010  
Honolulu, HI 96814 | USA  
Main +1 808 544 1600  
Fax +1 808 544 9574  
[cushmanwakefield.com](http://cushmanwakefield.com) | [chaneybrooks.com](http://chaneybrooks.com)

## SITE PLAN



## SPACE DETAILS

SIZE:	-9,000 SF
ASKING BASE RENT:	\$1.25/SF/Mo (Negotiable)
CAM (2026):	\$0.82/SF/Mo
TERM:	3-5 Years
PARKING:	9 Stalls at \$125/Mo plus GET



## SPACE HIGHLIGHTS

- Site provides over 20 private enclosed office spaces, plus large break room
- Common area restrooms located on the sites floor
- Space is ideal for any medium size back-office operation
- Electric/AC billed separately



### KEITH R. GURNEY (B)

Real Estate Advisor  
+1 808 396 8788  
kgurney@chaneybrooks.com

### IAN MONTGOMERY (S)

Real Estate Advisor  
+1 808 421 8778  
imontgomery@chaneybrooks.com

1440 Kapiolani Boulevard, Suite 1010  
Honolulu, HI 96814 | USA  
Main +1 808 544 1600  
Fax +1 808 544 9574  
[cushmanwakefield.com](http://cushmanwakefield.com) | [chaneybrooks.com](http://chaneybrooks.com)