



**CLT**  
LOGISTICS  
CENTER

THE  
**MERITEX**<sup>®</sup>  
COMPANY  
ESTD 1918

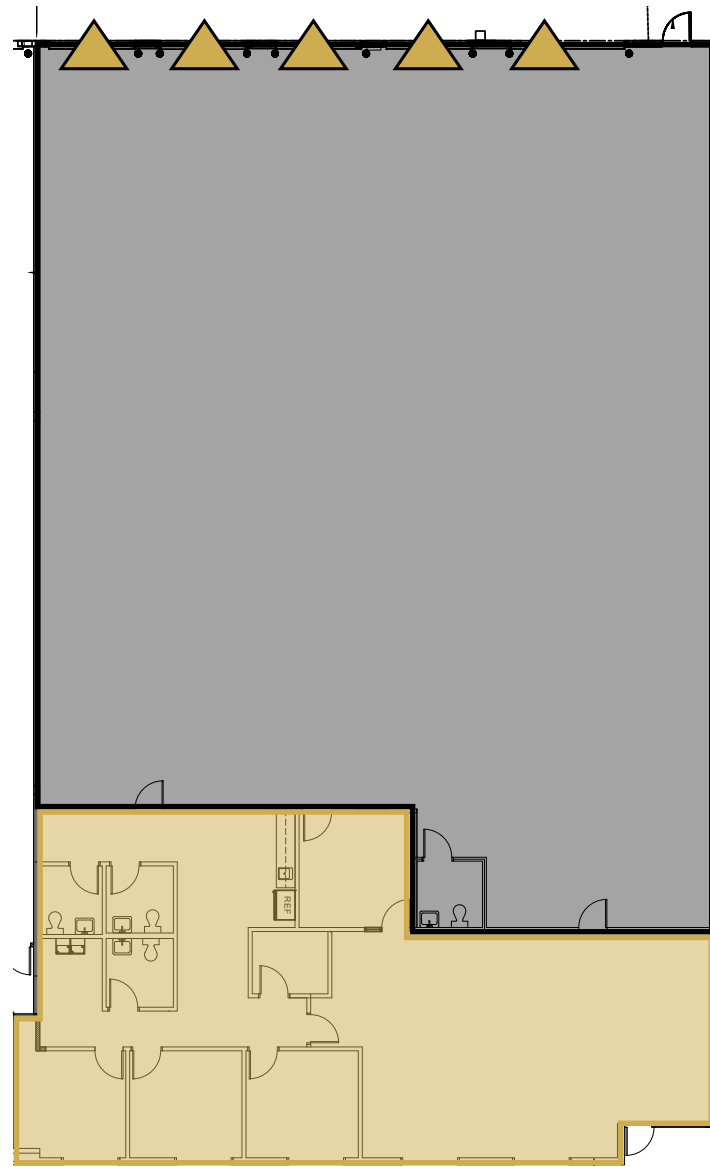
# CLT LOGISTICS CENTER

3101 YORKMONT RD  
**SUITE 250**

**CHARLOTTE, NORTH CAROLINA**

8,700 SF AVAILABLE FOR LEASE

3101 YORKMONT RD  
**SUITE 250**



- ▲ DOCK HIGH DOOR
- DRIVE-IN DOOR

**6,258 SF** WAREHOUSE  
**2,442 SF** OFFICE

**8,700 SF Total**

### SPACE FEATURES

8,700 SF Total Available

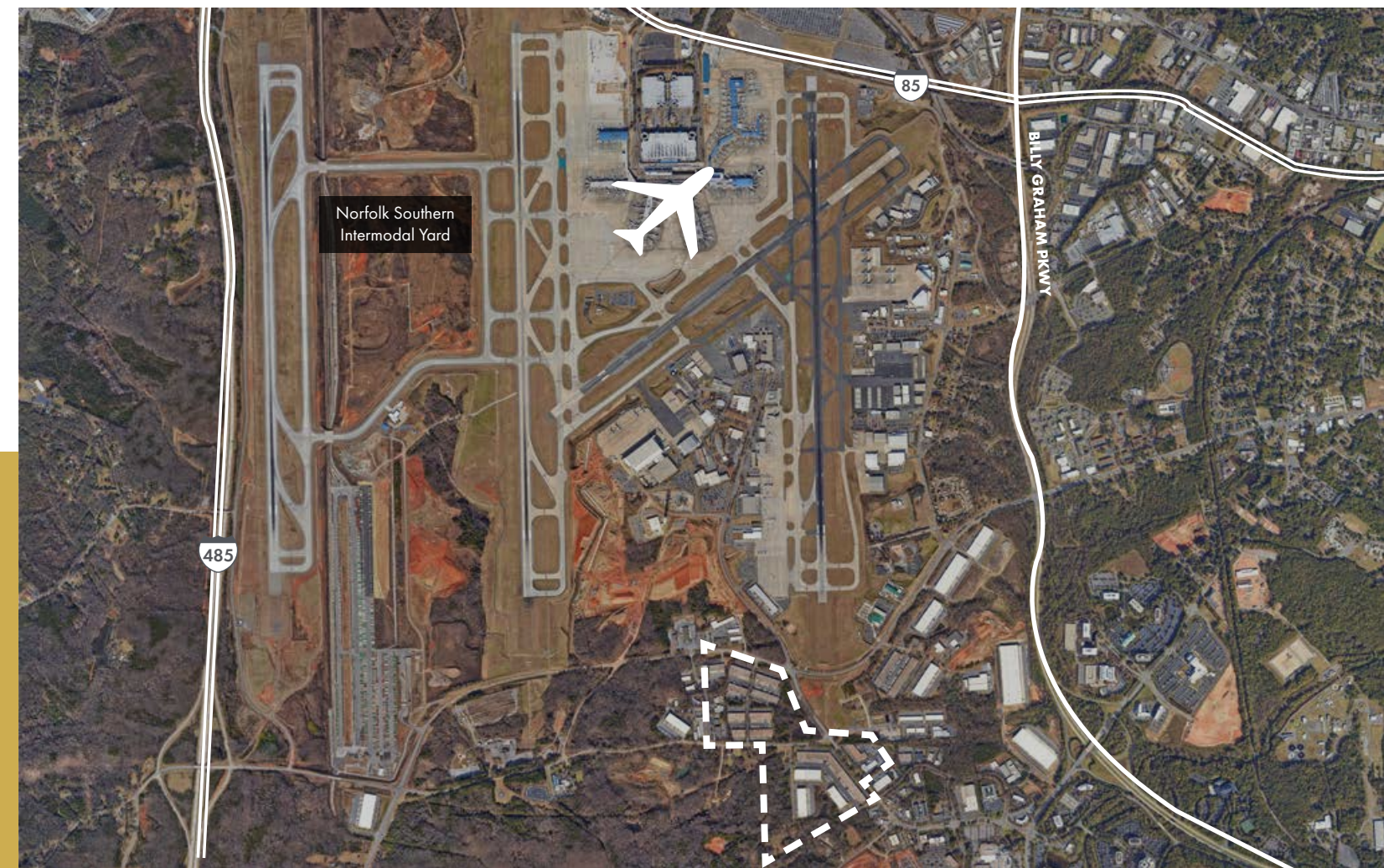
- 18' Clear
- Wet Sprinkler
- 4 (9' x 10') Dock High Doors
- 1 (12' x 14') Dock High Door
- 5 Levelers
- I-2 Zoning
- 400 Amp Power Service



THE  
**MERITEX**  
COMPANY  
ESTD 1916

### OWNERSHIP - THE MERITEX COMPANY

Meritex is a 107-year-old, family-owned company with a focus on light industrial properties, committed to providing exceptional spaces and service, allowing businesses to focus on their work at hand. Meritex strategically expands within key markets, ensuring that their properties and growth rate are in sync with their tenants' needs and ambitions. And once you're in a Meritex building, you can be assured that an expert local team is on hand when you need them.





SUITE NO.	TENANT	SF
3401	INTERNATIONAL AIRPORT DRIVE	43,345
3400	INTERNATIONAL AIRPORT DRIVE	42,088
3301	INTERNATIONAL AIRPORT DRIVE	40,920
3300	INTERNATIONAL AIRPORT DRIVE	46,977
3201	INTERNATIONAL AIRPORT DRIVE	31,725
3200	INTERNATIONAL AIRPORT DRIVE	41,146
3101	INTERNATIONAL AIRPORT DRIVE	28,138
3100	INTERNATIONAL AIRPORT DRIVE	50,356
3140	YORKMONT RD	43,341
3100	YORKMONT RD	22,111
<b>3101</b>	<b>YORKMONT RD</b>	<b>192,874</b>

**FOR MORE INFORMATION, PLEASE CONTACT:**

**CASEY MULHERN**

Senior Vice President  
704.705.1182

[casey.mulhern@foundrycommercial.com](mailto:casey.mulhern@foundrycommercial.com)

**BRIAN CRAVER, CCIM**

Senior Vice President  
704.319.5072

[brian.craver@foundrycommercial.com](mailto:brian.craver@foundrycommercial.com)