



Building A

Up to 47,395 sf available

Commerce South Office Park has excellent profile, location, exposure, signage, and branding opportunity for future tenants. A rare opportunity for a large user, or the building can accommodate several tenants with a variety of demising options. Located within close proximity to Whitemud Drive at Roper Road and 86th Street.

Get more information

Mark Hartum, B.Comm, SIOR
Principal
+1 780 429 7557
mark.hartum@avisonyoung.com

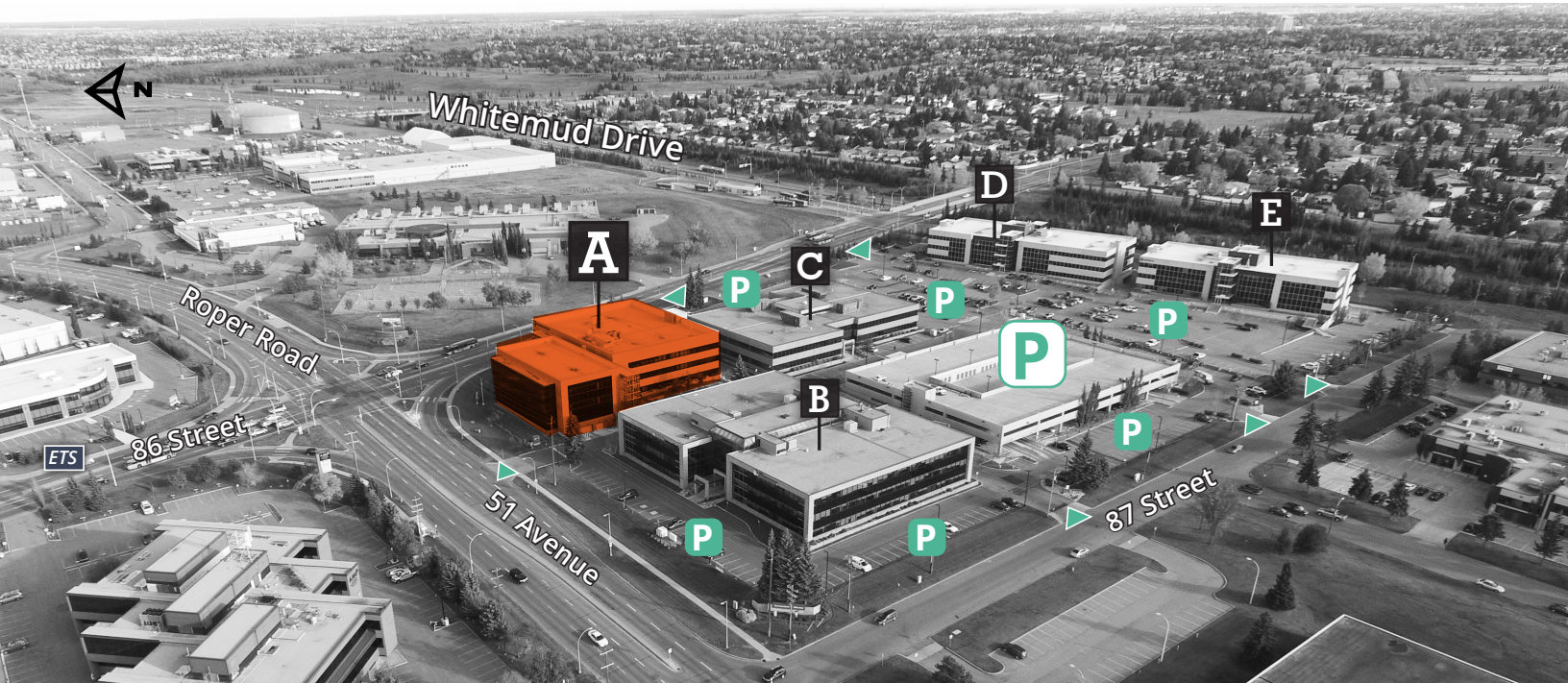
Karnie Vertz, LEED GA
Principal
+1 780 429 7551
karnie.vertz@avisonyoung.com

Cailey Martiniuk
Associate
+1 780 429 7553
cailey.martiniuk@avisonyoung.com

Ally Shirley
Associate
+1 780 915 2210
ally.shirley@avisonyoung.com

For Lease

Commerce South Office Park A
8615 - 51 Avenue, Edmonton



▲ Street Access P Surface Parking P Parkade

Property Description

- Built in 2014
- Class A, LEED Gold office building
- BOMA Best Gold
- Fitwell Certified with Distinction & Energy Star Certified
- Underground parking with 7' clearance
- Building is equipped with Shaw fibre optics
- Tenants have access to the fitness facility and tenant lounge featuring a golf simulator located in building B
- Excellent signage exposure to 51st Avenue & 86th Street



Situated with easy access to major arterials and nearby amenities



Top of class ownership by Sun Life Investment Management and management by BentallGreenOak



Minutes from Davies Transit Centre and future LRT station



Fitness Facility (Building B)



Tenant Lounge (Building B)



Tenant Lounge (Building B)

For Lease

Commerce South Office Park A
8615 - 51 Avenue, Edmonton

Available Area: **Suite 100:** 28,179 sf
Suite 210: 19,216 sf
Total: 47,395 sf

HVAC Hours: 7:00 am - 6:00 pm M-F

Base Rent: \$19.00 psf

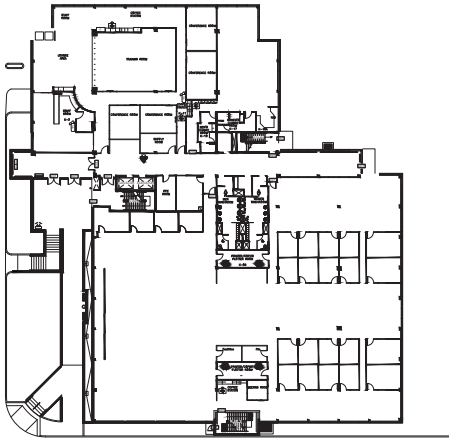
Additional Rent: \$14.02 psf (2023)
**Includes utilities and in-suite janitorial*

Parking: 3/1,000 sf comprised of:
1/1,000 sf reserved underground stalls \$75.00/mo
2/1,000 sf reserved surface stalls \$25.00/mo

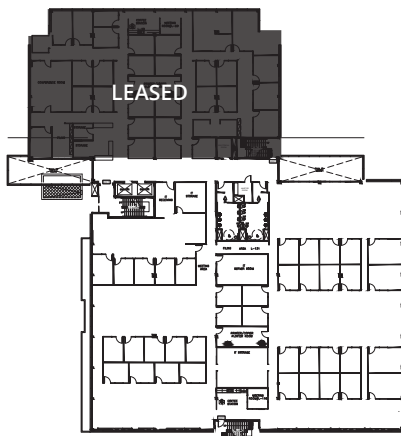
Building Highlights:

- Large floor plates with built out offices, kitchen, open work space, breakout rooms, etc.
- Demising options are available
- Move-in ready
- Excellent branding and signage opportunities

Suite 100: 28,179 sf



Suite 210: 19,216 sf



For Lease

Commerce South Office Park A
8615 - 51 Avenue, Edmonton



Drive Times

Davies Station LRT	3 Mins	Sherwood Park	19 Mins
Whyte Avenue	11 Mins	Beaumont	21 Mins
Anthony Henday	11 Mins	International Airport	22 Mins
Downtown	17 Mins	Yellowhead Trail	26 Mins
West Edmonton Mall	19 Mins	St. Albert	36 Mins

Mark Hartum, B.Comm, SIOR
Principal
+1 780 429 7557
mark.hartum@avisonyoung.com

Karnie Vertz, LEED GA
Principal
+1 780 429 7551
karnie.vertz@avisonyoung.com

Cailey Martiniuk
Associate
+1 780 429 7553
cailey.martiniuk@avisonyoung.com

Ally Shirley
Associate
+1 780 915 2210
ally.shirley@avisonyoung.com

