

\$21 /SF

COMMERCIAL LEASE

402 E Yakima Ave #1100 Yakima, WA 98901

COMMERCIAL OFFICE LEASE

OFFICE CAN BE DEMISED INTO 2 SPACES

6,890 SQUARE FEET

SECURE BUILDING WITH AMPLE PARKING

FULL SERVICE LEASE

EXCELLENT VIEWS

Josh DeBoer, CCIM, MBA

Managing Broker

509-952-1726

MrYakimaRealEstate@gmail.com

Liz Delgado

Managing Broker

509-823-7039

LizD@johnlscott.com



John L. Scott
YAKIMA



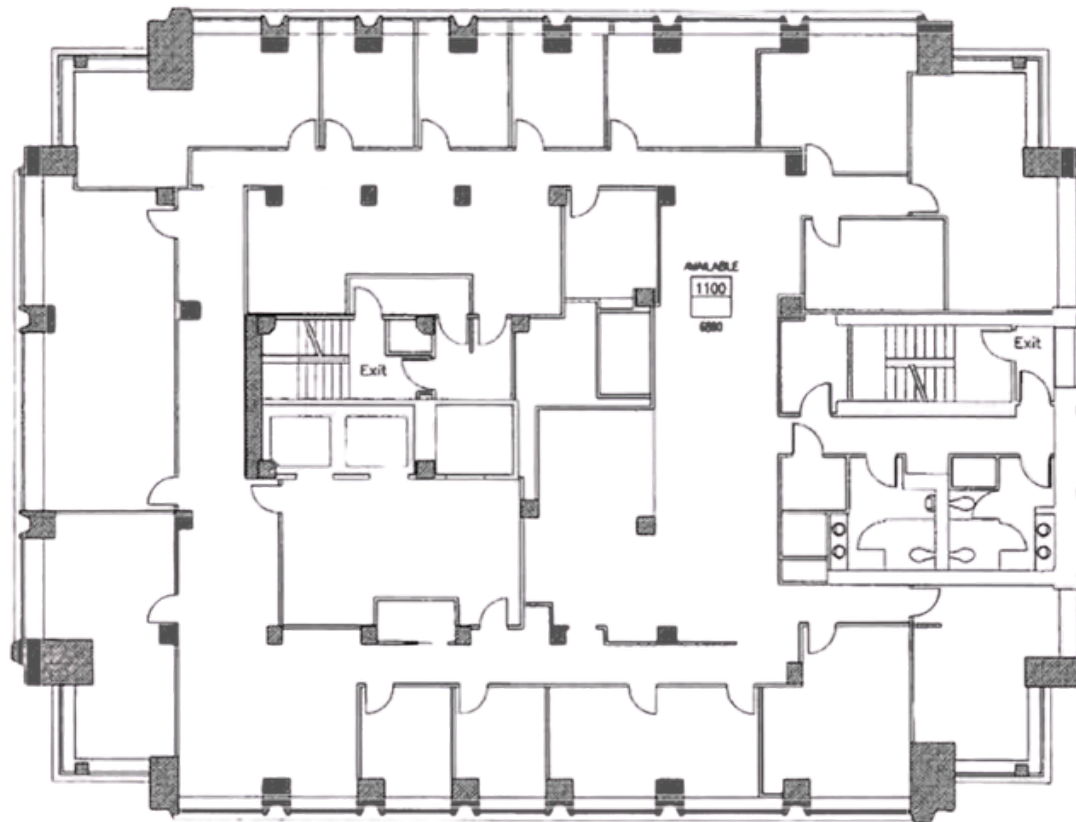
HIGHLIGHTS



Located in the heart of Downtown Yakima, 402 E Yakima Ave, Ste 1100 offers a prime commercial office lease opportunity with 6,890 square feet of flexible space. This secure building features ample parking and excellent views, all within walking distance to local amenities, dining, and services. The suite can be demised into two separate spaces to accommodate a variety of business needs, and the full service lease provides added convenience for tenants seeking simplicity and value.

402 E YAKIMA AVE #1100
YAKIMA, WA 98901

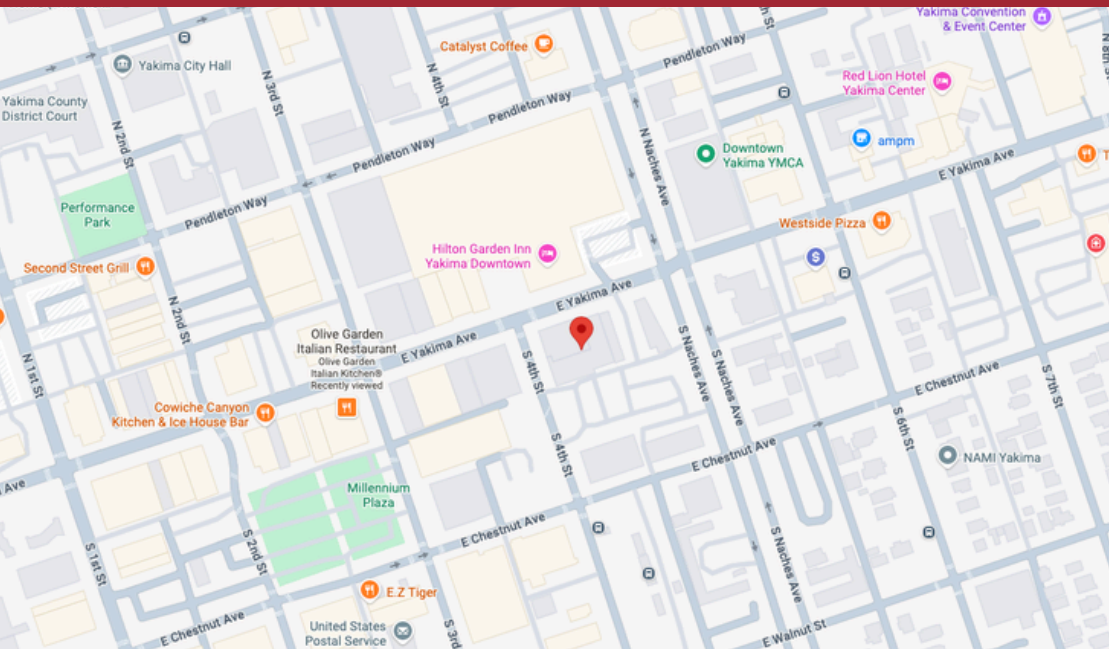
FLOOR PLAN



402 E YAKIMA AVE #1100
YAKIMA, WA 98901



HEART OF DOWNTOWN YAKIMA | WALKING DISTANCE TO EVERYTHING




MR. & MRS. YAKIMA
REAL ESTATE

John L. Scott | YAKIMA

Liz Delgado
Managing Broker

509-823-7039

lizD@johnlscott.com

Josh DeBoer, CCIM, MBA
Managing Broker

509-952-1726

MrYakimaRealEstate@gmail.com

WWW.MRANDMRSYAKIMAREALESTATE.COM