



## 1900 11th Avenue, Suite B

Columbus, Georgia 31901

### Property Highlights

- +/- 1,000 SF professional office/medical suite
- Convenient Columbus location with easy access to major roads
- Ideal for medical, wellness, counseling, or general office use

### Property Overview

This suite offers approximately 1,000 square feet of well-laid-out professional office space ideal for medical, wellness, or general office use. The space features three private exam rooms, a spacious waiting room, a private office, and a break room for staff.

Conveniently located in Columbus with easy access to major thoroughfares, Suite B is move-in ready and perfectly suited for a growing practice or professional office user seeking an efficient, turnkey space.

### Offering Summary

<b>Lease Rate:</b>	Negotiable
<b>Building Size:</b>	5,166 SF
<b>Available SF:</b>	1,000 SF

### Demographics 0.3 Miles 0.5 Miles 1 Mile

<b>Total Households</b>	199	1,161	4,469
<b>Total Population</b>	474	2,510	9,592
<b>Average HH Income</b>	\$38,847	\$40,336	\$49,467

### For More Information

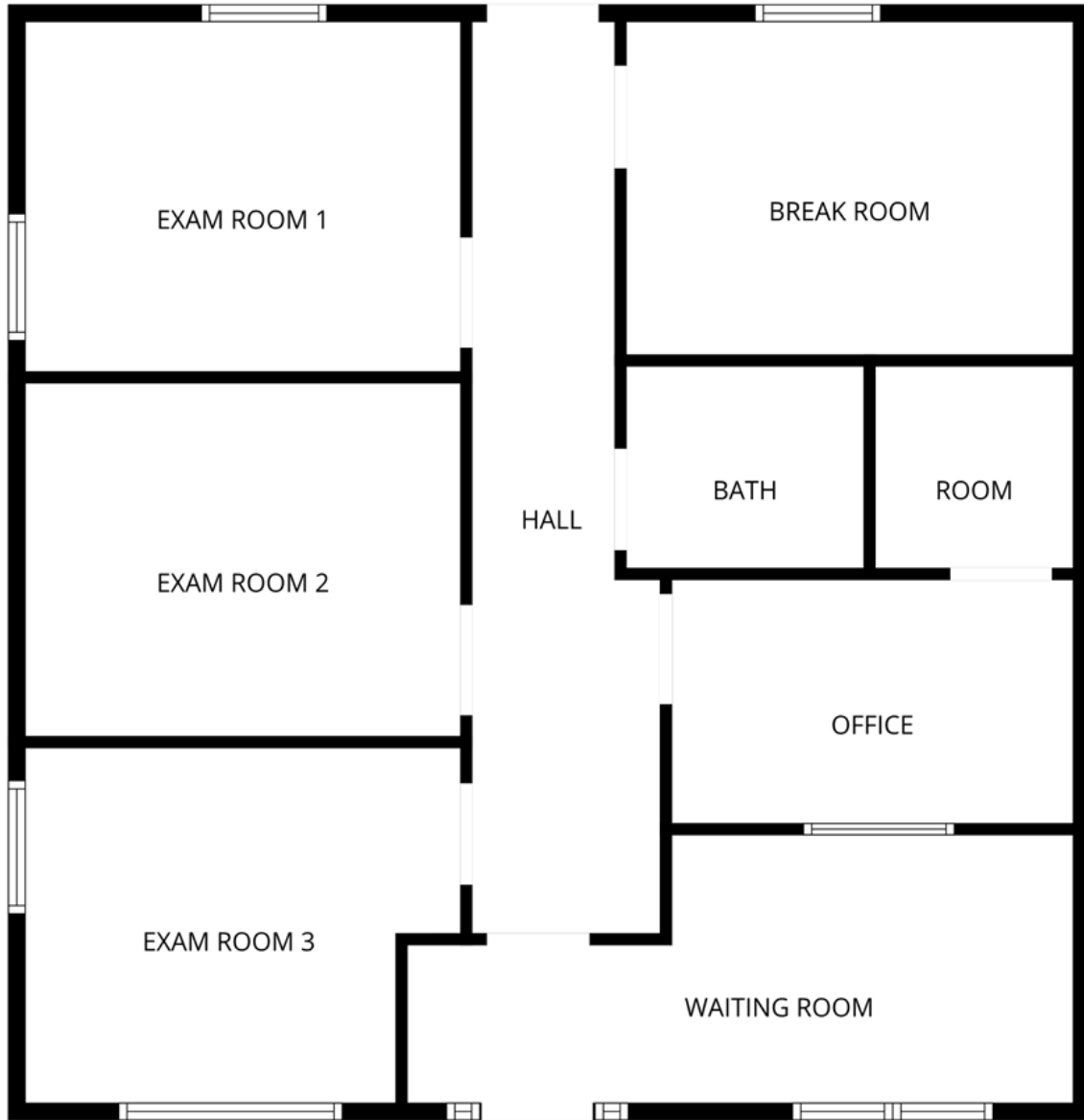
**Amy D. Gill, MICP, MRP**

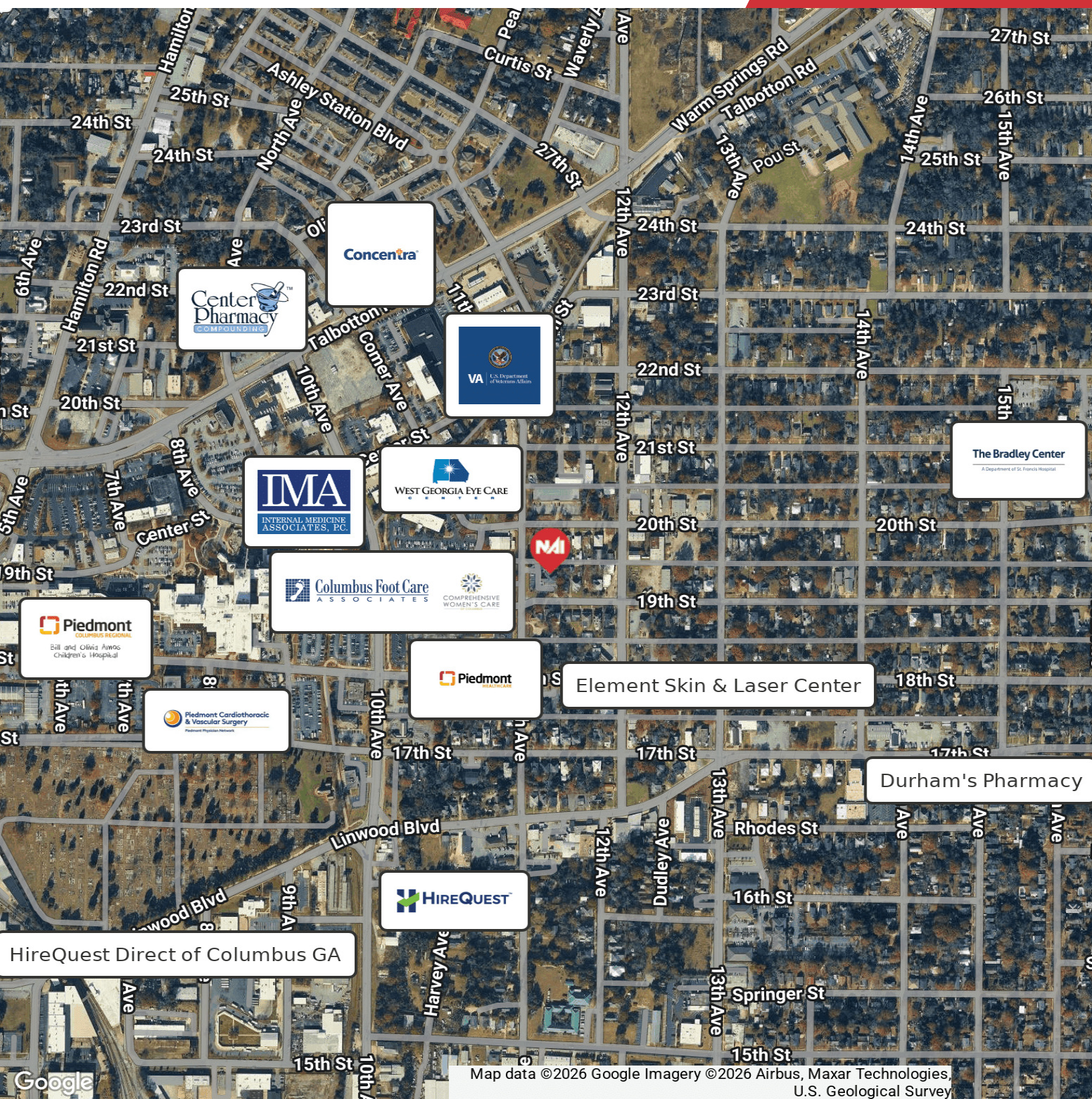
O: 706 660 5418 x1009  
agill@g2cre.com | GA #381793

**Jack Hayes, SIOR, CCIM**

O: 706 660 5418 x1002  
jhayes@g2cre.com | GA #336627



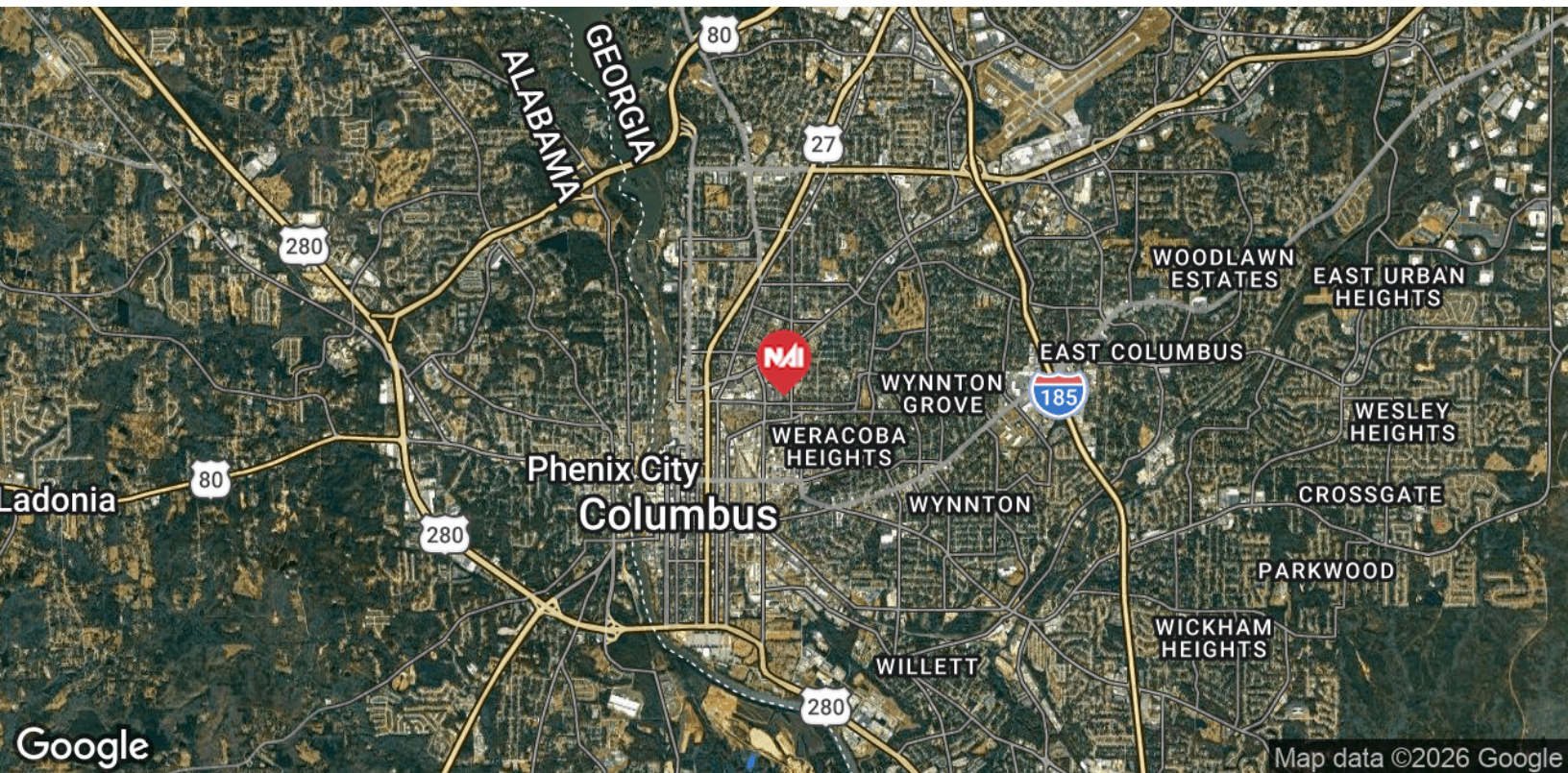
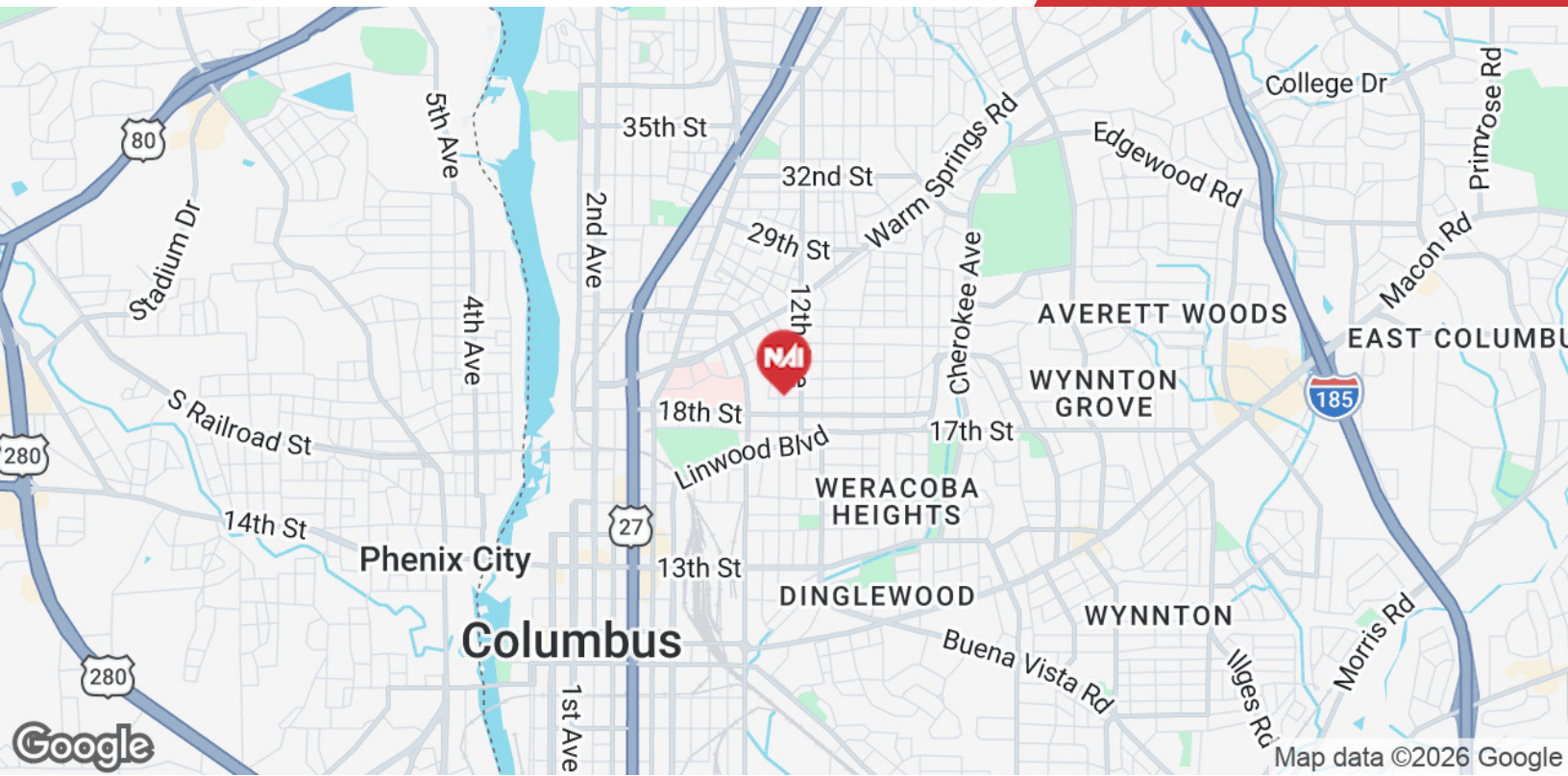




Map data ©2026 Google Imagery ©2026 Airbus, Maxar Technologies, U.S. Geological Survey

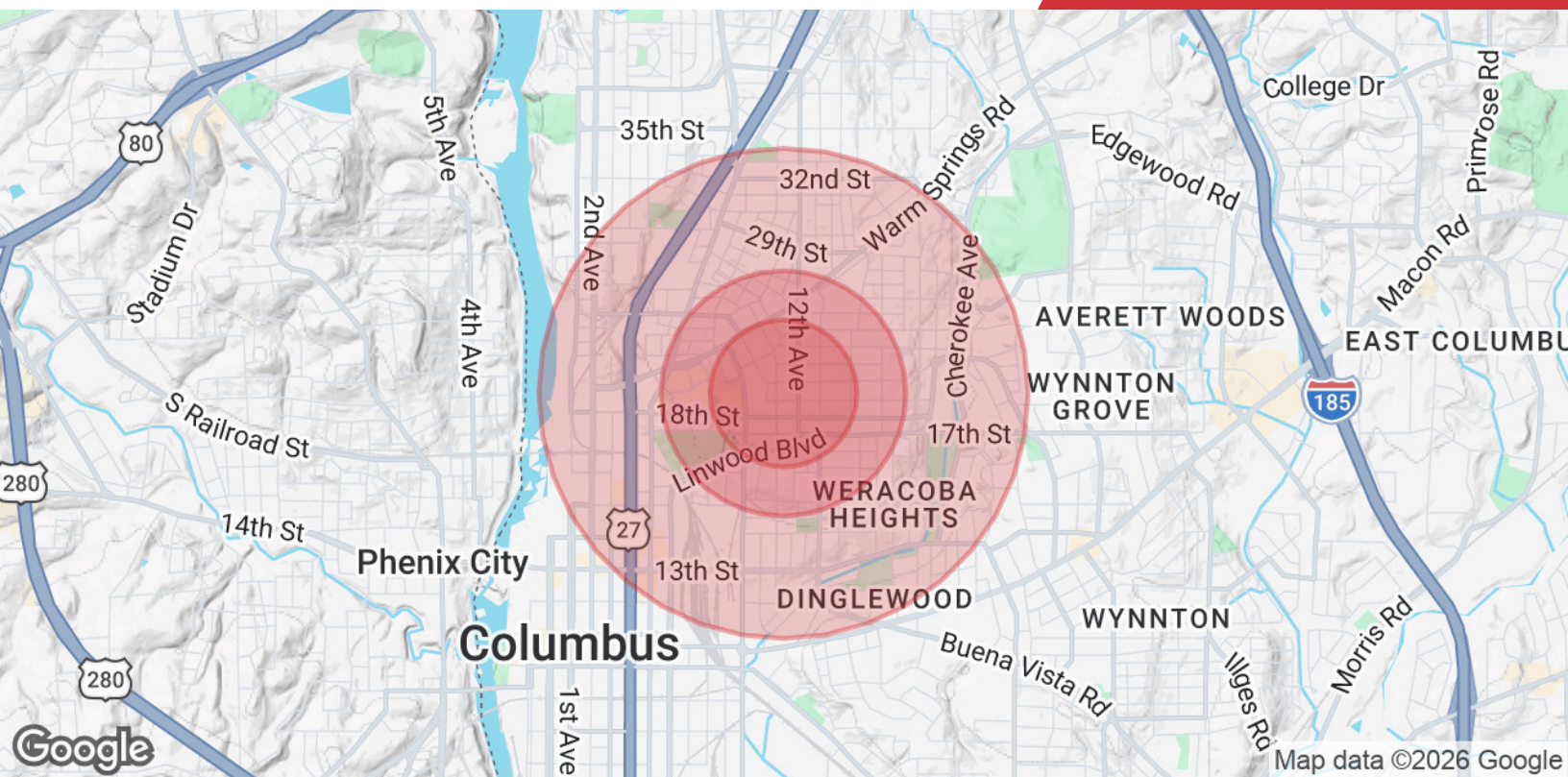
We obtained the information above from sources we believe to be reliable. However, we have not verified its accuracy and make no guarantee, warranty or representation about it. It is submitted subject to the possibility of errors, omissions, change of price, rental or other conditions, prior sale, lease or financing, or withdrawal without notice. We include projections, opinions, assumptions or estimates for example only, and they may not represent current or future performance of the property. You and your tax and legal advisors should conduct your own investigation of the property and transaction.

Post Office Box 4529  
Columbus, GA 31904  
706 660 5418 tel  
[G2cre.com](http://G2cre.com)



We obtained the information above from sources we believe to be reliable. However, we have not verified its accuracy and make no guarantee, warranty or representation about it. It is submitted subject to the possibility of errors, omissions, change of price, rental or other conditions, prior sale, lease or financing, or withdrawal without notice. We include projections, opinions, assumptions or estimates for example only, and they may not represent current or future performance of the property. You and your tax and legal advisors should conduct your own investigation of the property and transaction.

Post Office Box 4529  
Columbus, GA 31904  
706 660 5418 tel  
[G2cre.com](http://G2cre.com)



	0.3 Miles	0.5 Miles	1 Mile
<b>Population</b>			
Total Population	474	2,510	9,592
Average Age	40	40	39
Average Age (Male)	40	39	38
Average Age (Female)	41	41	40
<b>Households &amp; Income</b>			
Total Households	199	1,161	4,469
# of Persons per HH	2.4	2.2	2.1
Average HH Income	\$38,847	\$40,336	\$49,467
Average House Value	\$141,918	\$138,034	\$158,275

Demographics data derived from AlphaMap