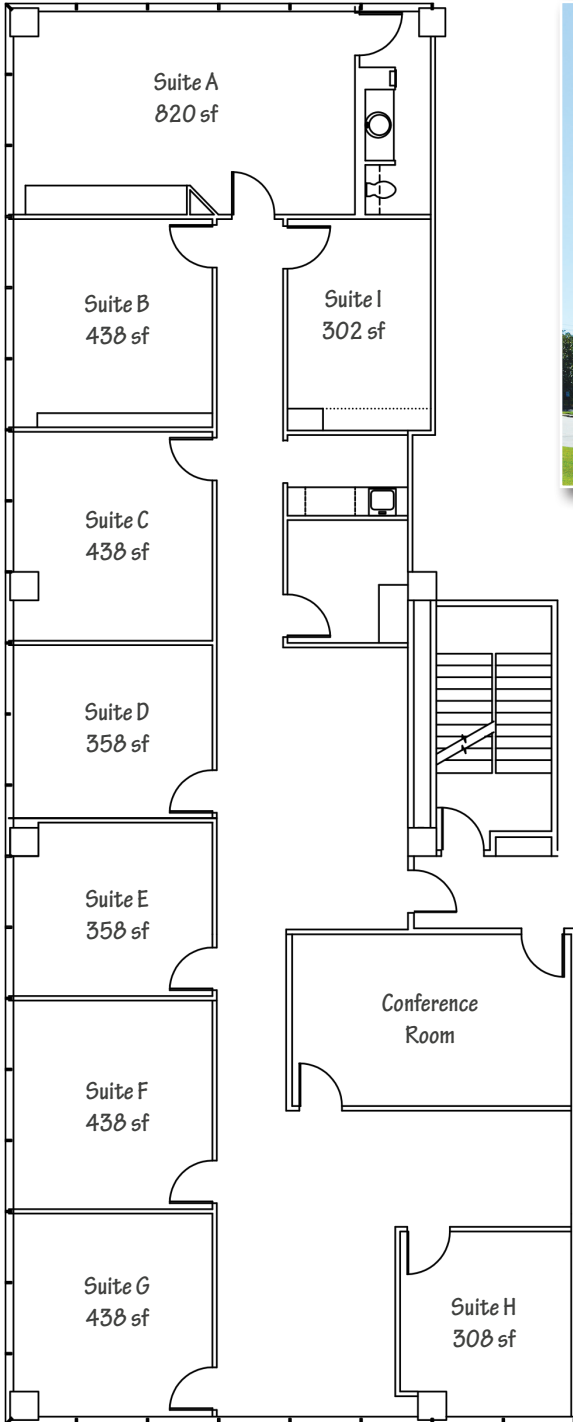


FOR LEASE | EXECUTIVE SUITES | 2550 GRAY FALLS DR.



**EXECUTIVE OFFICE BENEFITS:**

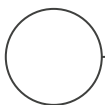
- Fully Furnished Private Offices
- High-Speed Internet
- Conference Room
- Shared Break-Room
- Shared Reception Area
- Coffee Bar

**PROPERTY FEATURES:**

- Four Level Office Building
- Garage, Covered, Surface Parking
- Reserved Spaces
- 24/7 Card-Key Access
- On-Site Management
- On-Site Leasing
- On-Site Maintenance
- Immediate Access to Westpark Toll, Beltway 8, IH-10

**SPACE AVAILABLE:**

- Private Offices Ranging From 302 sf to 820 sf.
- Monthly Rates Starting at \$500/mo
- Short Lease Term Options



**Stone Mountain Business Center**

2550 Gray Falls Drive Suite 200 • Houston, TX 77077

**MATT EASTERLING**  
713.325.4112  
measterling@landparkco.com

**RYAN BURNAMAN**  
281.598.9856  
rburnaman@landparkco.com

**BILL MCGRATH, CCIM**  
281.598.9860  
bmcgrath@landparkco.com