

Office / Service Retail Space for Lease

AVAILABLE: 3,794 – 9,397 RSF | CAPITOL HILL LOCATION

115 15TH AVE E, SEATTLE, WA 98112



Property Highlights

RATE: \$20.00 PSF NNN | EST. NNN: \$11.87 PSF

Located in highly desirable Capitol Hill neighborhood

Signage opportunities

Private interior elevator in building

±6 free surface onsite parking spaces

Easy access to I-5 and Downtown Seattle

Perfect for service-oriented business seeking high visibility

Walk Score® 97 | Transit Score® 78 | Bike Score® 89

[This property is also available for sale \[Click for Info\]](#)



FOR MORE INFO
CONTACT

BOJIDAR GABROVSKI
847.275.8474
bgabrovski@orioncp.com

JACK DEANE
206.707.1315
jdeane@orioncp.com

1218 Third Avenue
Suite 2200
Seattle, WA 98101

www.orioncp.com

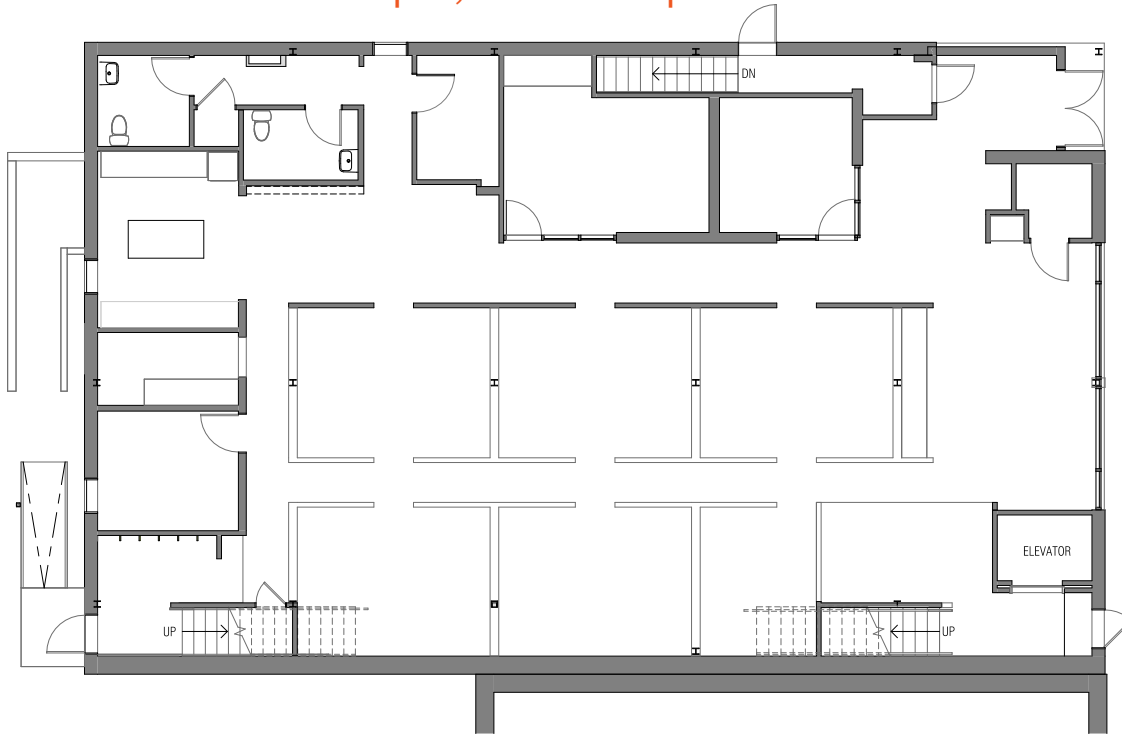
ORION
COMMERCIAL PARTNERS

Office / Service Retail Space for Lease

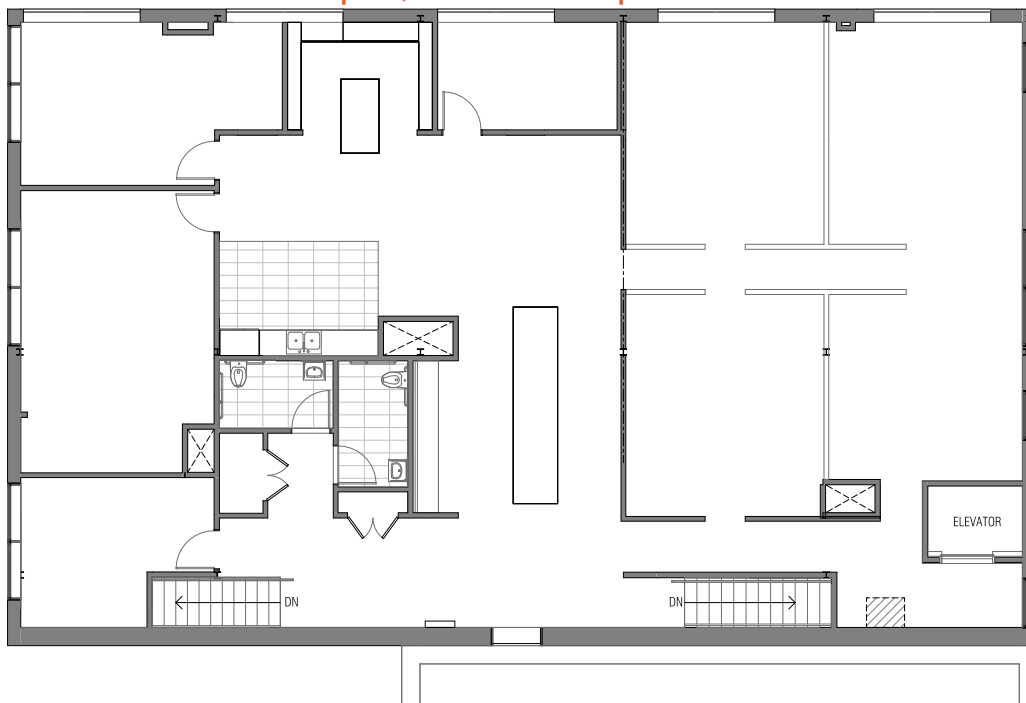
FIRST & SECOND FLOOR | 3,794 - 9,397 RSF FULL BUILDING

115 15TH AVE E, SEATTLE, WA 98112

First Floor | 3,794 RSF | Renovated 2016



Second Floor | 3,888 RSF | Renovated 2020



FOR MORE INFO
CONTACT

BOJIDAR GABROVSKI
847.275.8474
bgabrovski@orioncp.com

JACK DEANE
206.707.1315
jdeane@orioncp.com

1218 Third Avenue
Suite 2200
Seattle, WA 98101

www.orioncp.com

ORION
COMMERCIAL PARTNERS

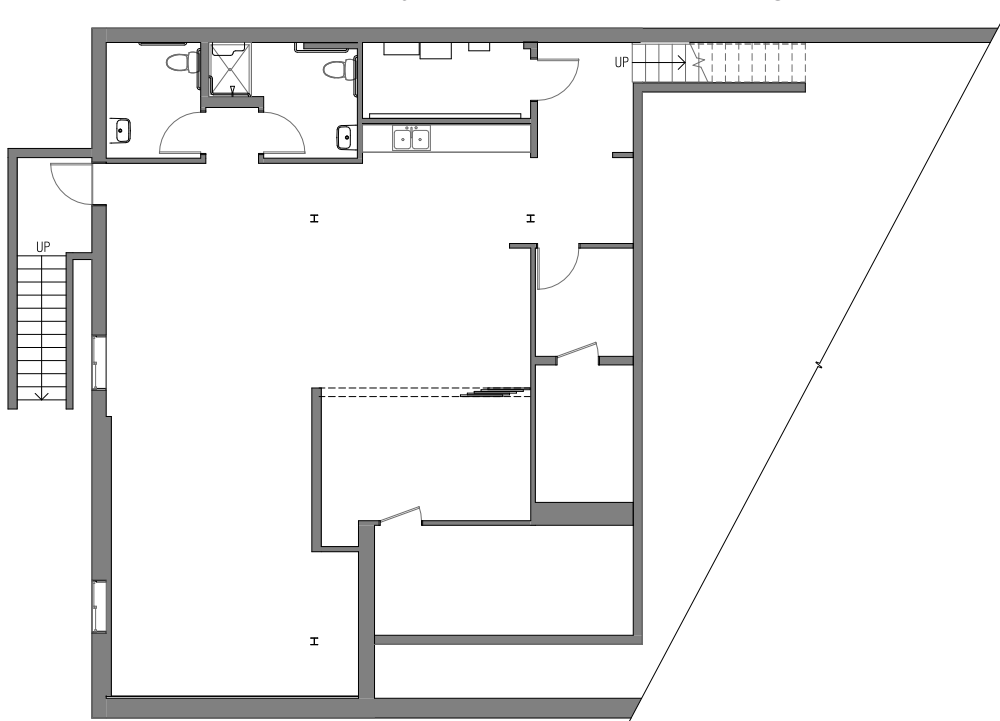
Office / Service Retail Space for Lease

AVAILABLE: 3,794 – 9,397 RSF | CAPITOL HILL LOCATION

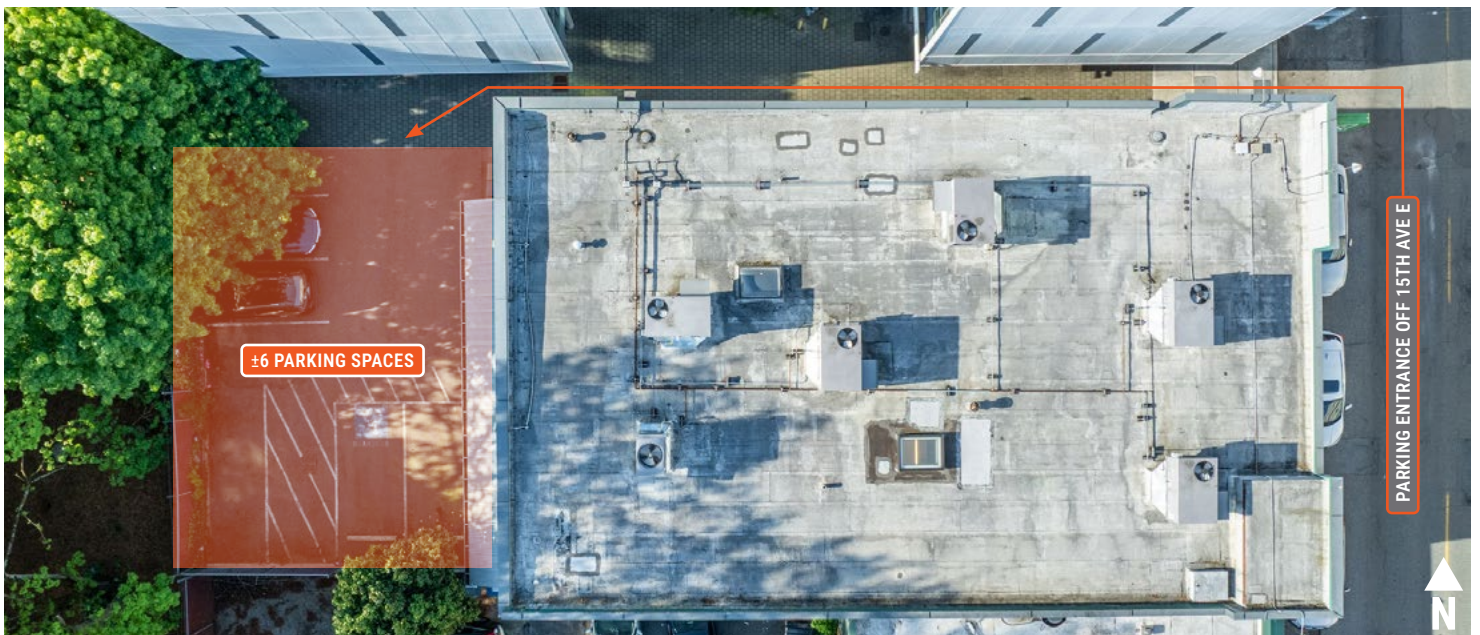
115 15TH AVE E, SEATTLE, WA 98112

Basement | 1,715 RSF | Renovated 2016

Available only with first floor or full building lease



Onsite Parking



FOR MORE INFO
CONTACT

BOJIDAR GABROVSKI
847.275.8474
bgabrovski@orioncp.com

JACK DEANE
206.707.1315
jdeane@orioncp.com

1218 Third Avenue
Suite 2200
Seattle, WA 98101

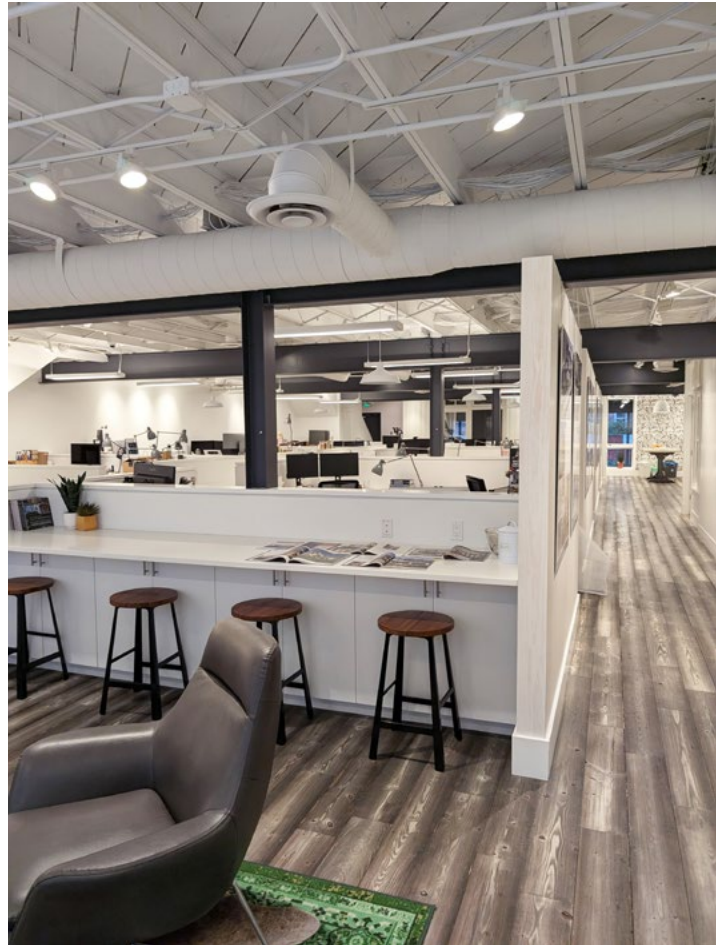
www.orioncp.com

ORION
COMMERCIAL PARTNERS

Office / Service Retail Space for Lease

AVAILABLE: 3,794 – 9,397 RSF | CAPITOL HILL LOCATION

115 15TH AVE E, SEATTLE, WA 98112



FOR MORE INFO
CONTACT

BOJIDAR GABROVSKI
847.275.8474
bgabrovski@orioncp.com

JACK DEANE
206.707.1315
jdeane@orioncp.com

1218 Third Avenue
Suite 2200
Seattle, WA 98101

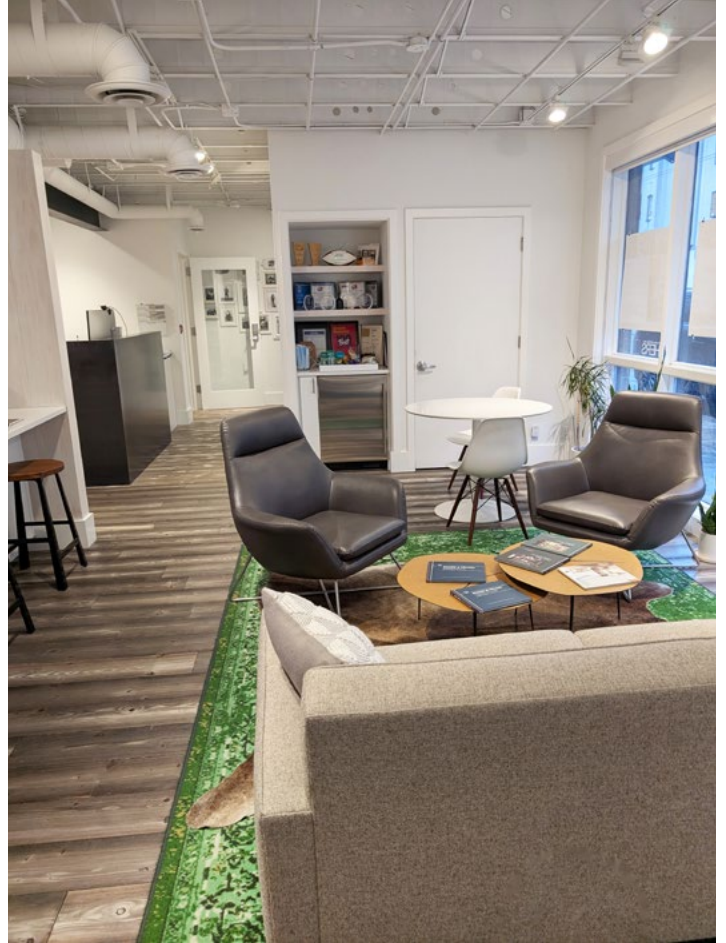
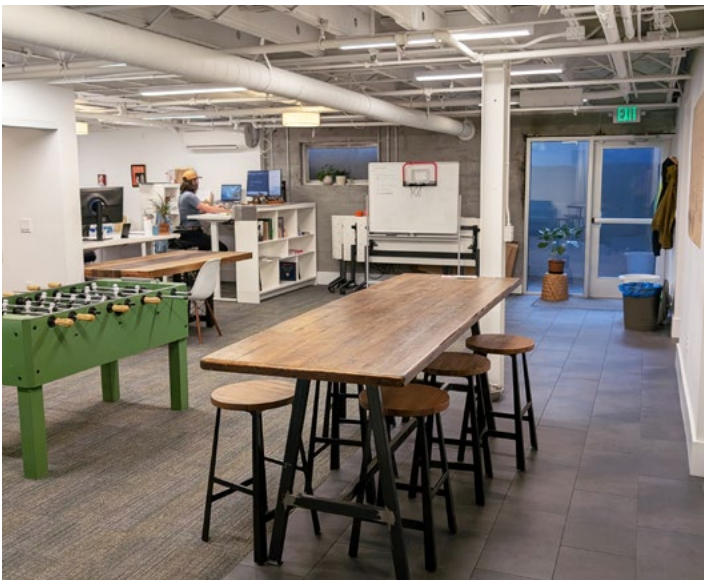
www.orioncp.com

ORION
COMMERCIAL PARTNERS

Office / Service Retail Space for Lease

AVAILABLE: 3,794 – 9,397 RSF | CAPITOL HILL LOCATION

115 15TH AVE E, SEATTLE, WA 98112



FOR MORE INFO
CONTACT

BOJIDAR GABROVSKI
847.275.8474
bgabrovski@orioncp.com

JACK DEANE
206.707.1315
jdeane@orioncp.com

1218 Third Avenue
Suite 2200
Seattle, WA 98101

www.orioncp.com

ORION
COMMERCIAL PARTNERS

Office / Service Retail Space for Lease

AVAILABLE: 3,794 – 9,397 RSF | CAPITOL HILL LOCATION

115 15TH AVE E, SEATTLE, WA 98112

Location Highlights

- Capitol Hill neighborhood with strong retail, dining, and residential density
- 11 minute walk to Light Rail
- 10 minute commute to Downtown Seattle
- 11 minute commute to South Lake Union

The map displays the Capitol Hill neighborhood in Seattle, centered around 115 15th Ave E. Key features include the I-5 Express highway, major streets like Broadway, Pike, and Madison, and numerous local businesses and landmarks. Highlighted locations include QFC, Safeway, Trader Joe's, Starbucks, Whole Foods Market, and Seattle Central College. The map also shows the proximity to South Lake Union, Cascade, First Hill, and Cherry Hill neighborhoods.

FOR MORE INFO
CONTACT

BOJIDAR GABROVSKI
847.275.8474
bgabrovski@orioncp.com

JACK DEANE
206.707.1315
jdeane@orioncp.com

1218 Third Avenue
Suite 2200
Seattle, WA 98101

www.orioncp.com

ORION
COMMERCIAL PARTNERS