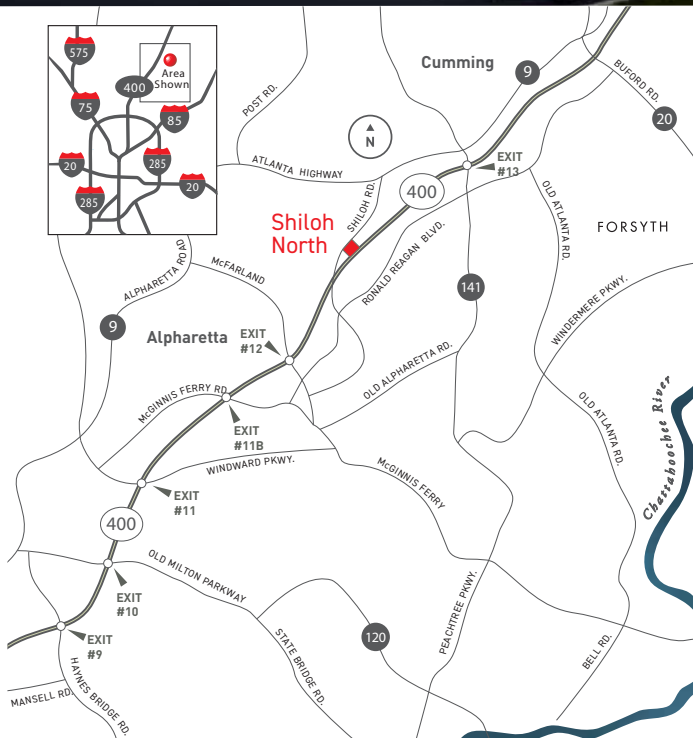


Shiloh North

4855 Shiloh Road, Cumming, Georgia

116,228 Square Feet



BUILD-TO-SUIT OPPORTUNITY

116,228 Sq. Ft. Warehouse/Distribution Building

Shiloh North is a 13.7-acre parcel located on Shiloh Road in Cumming, Forsyth County, Georgia. A 116,228 square foot rear-load warehouse/distribution facility is planned for this site. The building will be constructed by McDonald and will include all of the features and quality for which McDonald is known including floor to ceiling storefront windows, LED lighting, high quality finishes, and ESFR sprinklers with K25 heads.

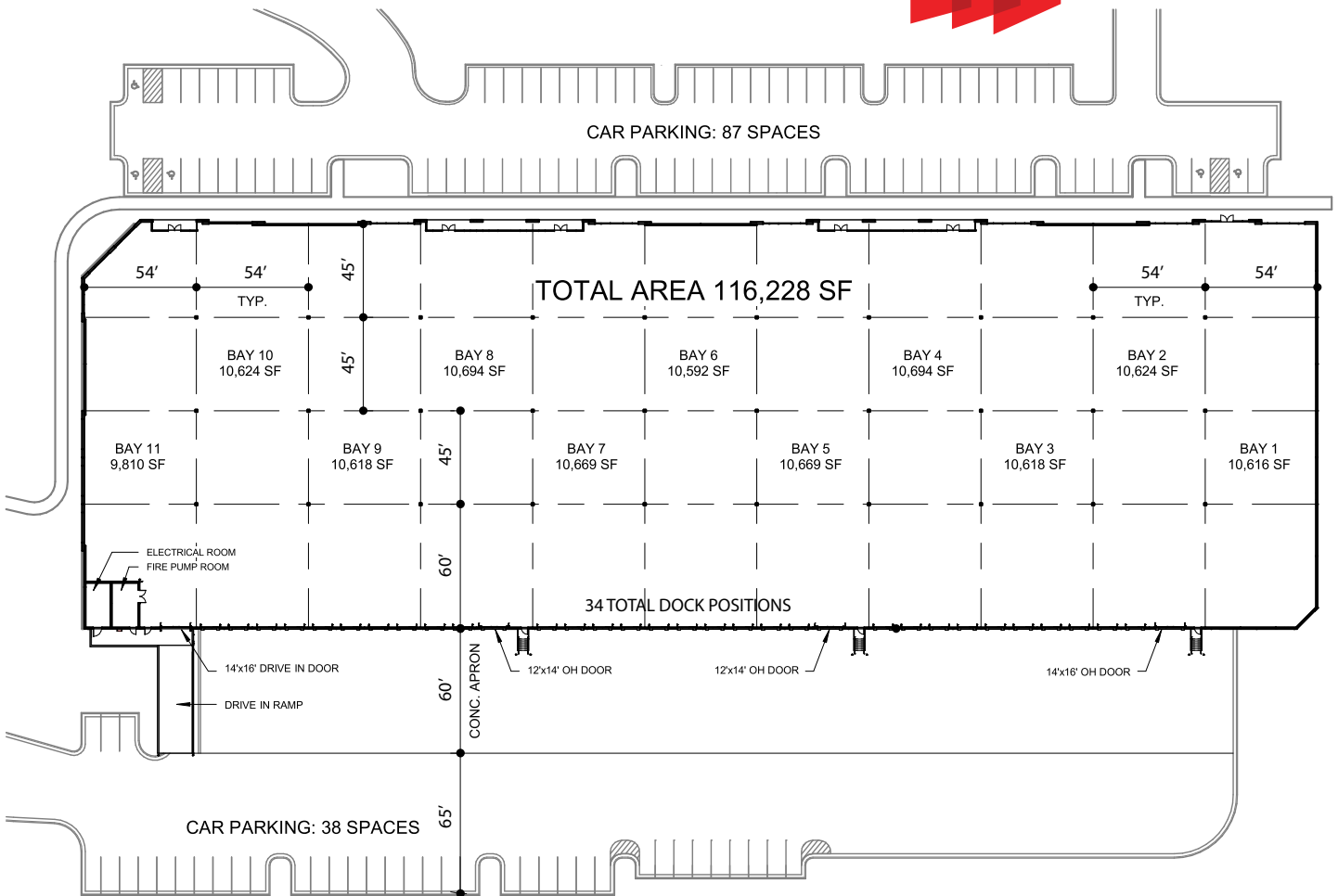
Forsyth County is one of the fastest growing and most affluent counties in the U.S. and has been voted one of the nation's best places to live, work and play. Numerous business development incentives are offered by Forsyth County. Visit www.forwardforsyth.org for more information.

For leasing information contact:

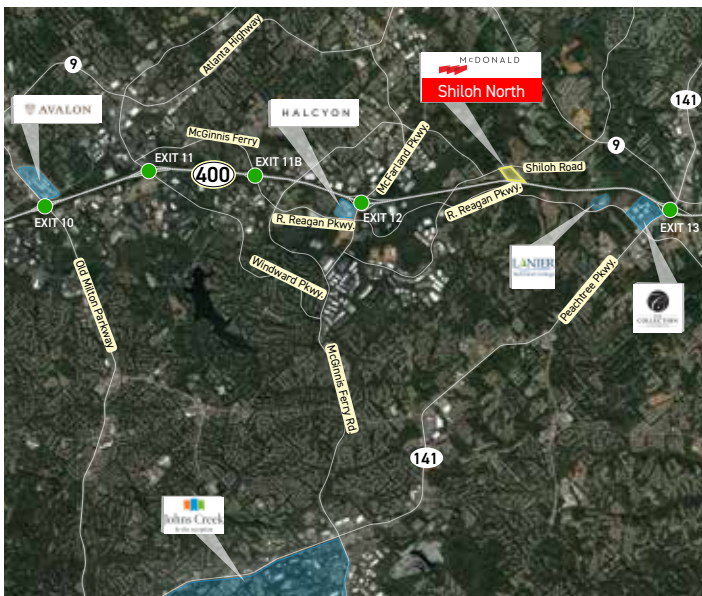
John Downing
jdowning@mcdco.com
(O) 404.923.5065; (C) 404.314.0390

John McDonald III
jrmcdonald@mcdco.com
(O) 404.239.0885; (C) 404.909.7144





Shiloh North



4855 Shiloh Road, Cumming GA 30040

Building Type:	Rear-Load
Building Size:	116,228 Square Feet
Building Dimensions:	594' W x 195' D
Construction:	Architectural Tilt-up Concrete
Ceiling Height:	32' Clear
Column Spacing:	54' W x 45' D Typical 60' D Staging Bay
Dock-High Doors:	30 (9' x 10') Dock-High Doors 2 (12' x 14') Dock-High Doors 1 (14' x 16') Dock-High Door
Drive-In Doors:	1 (14' x 16') Ramped Drive-In
Car Parking:	125 Total Spaces
Truck Court:	125' Deep Truck Court 60' Concrete Apron
Sprinkler:	ESFR System with K25 Heads