

# 365 Parr Circle

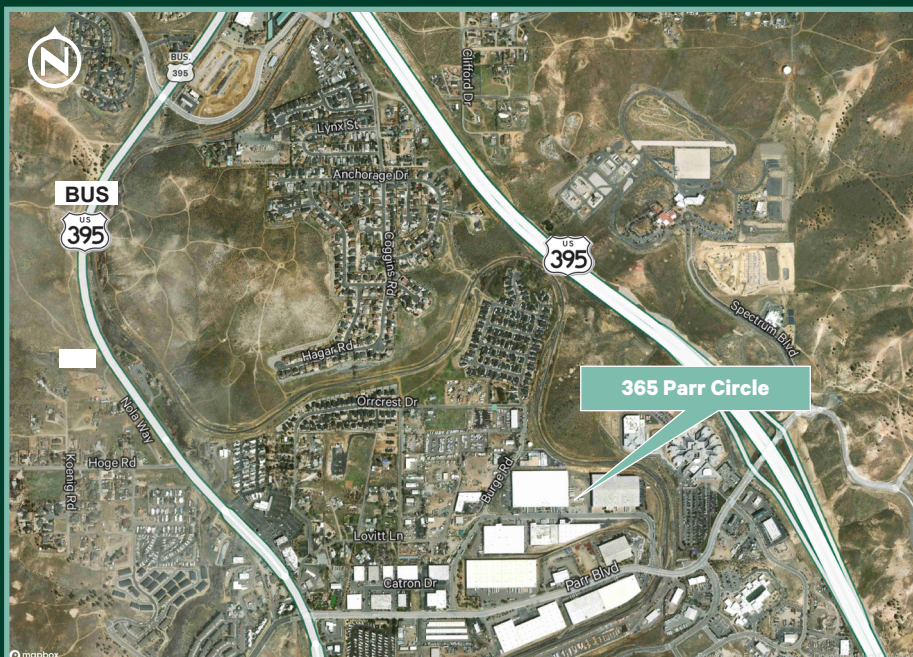
365 Parr Circle  
Reno, NV 89512

±65,550 WITH 1.33 ACRE YARD AVAILABLE STARTING OCTOBER 1, 2026



## Contact Us

Greg Shutt, SIOR  
Executive Vice President  
+1 775 250 3069  
Greg.Shutt@cbre.com  
Lic. BS.0046346





## Offering Highlights

- + ±65,550 SF Available 10/1/26
- + 36' clear height
- + Insulated metal building construction
- + ±1,200 SF two story office
- + 6 Dock High Doors (9' x 10')
- + 1 Drive in Door (12' x 14')
- + 400 amps 277/480 power
- + 1.33 acre improved and fenced yard available
- + .3/2000 Sprinklers
- + 41' X 27' column spacing
- + 6' concrete floors

© 2025 CBRE, Inc. All rights reserved. This information has been obtained from sources believed reliable, but has not been verified for accuracy or completeness. You should conduct a careful, independent investigation of the property and verify all information. Any reliance on this information is solely at your own risk. CBRE and the CBRE logo are service marks of CBRE, Inc. All other marks displayed on this document are the property of their respective owners, and the use of such logos does not imply any affiliation with or endorsement of CBRE. Photos herein are the property of their respective owners. Use of these images without the express written consent of the owner is prohibited.